



16 Lambrell Green | Kiveton Park | S26 5NT

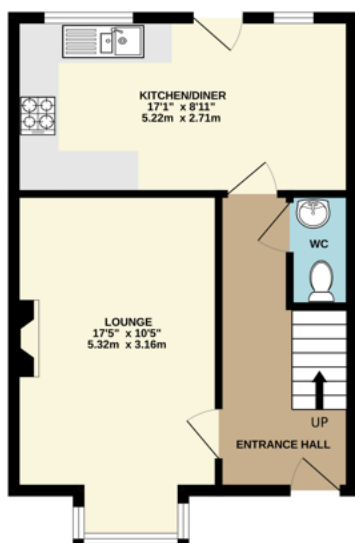
£210,000

Bell & Co Estates are delighted to present this FOUR Bedroom SEMI-DETACHED home over three floors in the heart of Kiveton Park. In brief the property comprises of Entrance Hall with downstairs WC, separate front facing Lounge, Spacious Modern Kitchen, understairs cupboard and Dining Area with back door access into the Garden. To the first floor are TWO DOUBLE BEDROOMS, One Single Bedroom and the family Bathroom complete with bath, wash basin and WC. To the Second floor is the MASTER suite with airing cupboard and ENSUITE Shower Room with wash basin and WC. To the front of the property is a small, grassed area, on road parking and to the side there is the GARAGE with off parking to the front. To the rear of the property is a DECKING AREA with steps down into the enclosed garden which is mainly laid to lawn. Close to all local amenities, transport links, this property is in a prime location!

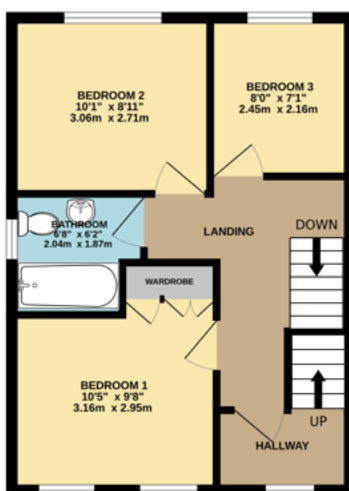
- Four Bedroom Semi Detached
- Spacious Lounge
- MODERN Kitchen with Appliances
- THREE DOUBLE BEDROOMS
- Master with Ensuite
- Modern Bathroom
- Enclosed Garden



GROUND FLOOR
419 sq.ft. (38.9 sq.m.) approx.



1ST FLOOR
409 sq.ft. (38.0 sq.m.) approx.



2ND FLOOR
272 sq.ft. (25.3 sq.m.) approx.



Contact Details

79 Wales Road
Kiveton Park
Sheffield
South Yorkshire
S26 6RA

www.bellcoestates.com

03333 580590

16 Lambrell Green
Kiveton Park
SHEFFIELD
S26 5NT

Energy rating

C

Valid until
5 July 2033

Certificate number
0166-0029-5233-6817-9200

Property type Semi-detached house

Total floor area 103 square metres

Agents Note: Whilst every care has been taken to prepare these sales particulars, they are for guidance purposes only. All measurements are approximate and for general guidance purposes only and whilst every care has been taken to ensure their accuracy, they should not be relied upon and potential buyers are advised to recheck the measurements