



6c Hillside Green | Harthill | Sheffield | S26 7AB

Guide Price £550,000 to £575,000

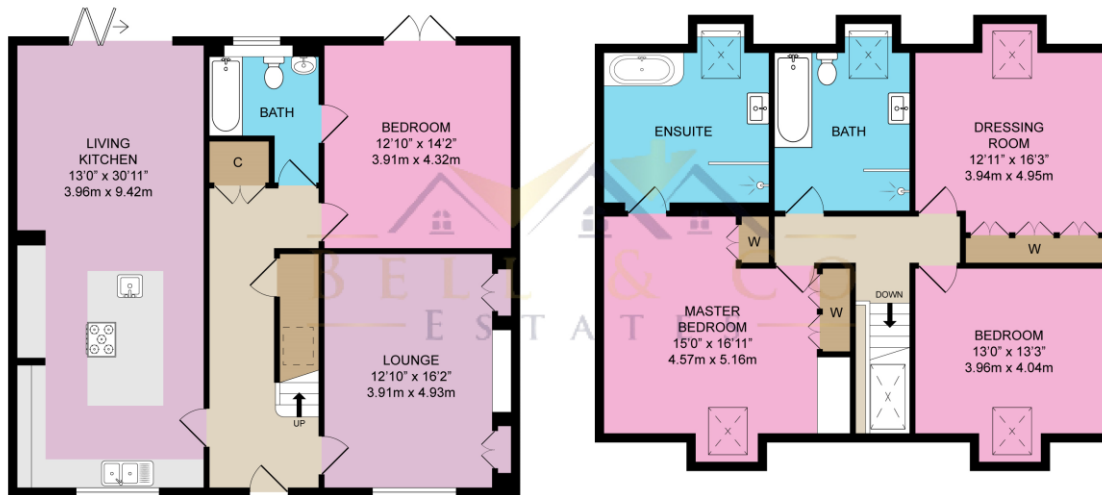
Bell & Co Estates are delighted to present to the market this Four/Five Bedroom Detached, new build home in the popular village of Harthill selling with no onward chain. Positioned at the end of a cul-de-sac on a private road of just THREE homes, this development has been beautifully designed and offers contemporary living. In brief the property comprises of Entrance Hallway with glass panelled stairs giving access to, the open plan Kitchen/Diner with a beautifully designed Kitchen with centre island, high spec appliances and bifold doors opening on to the rear patio area. Understairs store room and double doors open to a utility space with washer and dryer. Further multifunctional room, could be used as either a bedroom/ playroom or office. To the end of the hall is a stunning bathroom that also acts as an ensuite to a rear facing double bedroom. Before stepping up to the first floor, there is a stunning Media Room with electric feature fire and built in store cupboards. To the first floor are three double rooms, two with fitted wardrobes and Master with modern Ensuite as well as a beautifully designed family bathroom with free standing bath, separate shower and sink unit. Room three has a pull down ladder accessing room five which could be used as an office space or storage. To the outside is a detached single Garage with underfloor heating, a multi purpose room as either a garage or office/ business space. Enclosed garden with slate tiles and flowered borders.

- NEW HOME!
- Stunning Throughout
- Deceptively Spacious
- Contemporary Living
- Four / Five Bedroom Detached Home
- Kitchen Full Of Appliances
- Viewing Essential!



GROUND FLOOR
1069 sq ft (99.3 sqm) approx.

FIRST FLOOR
941 sq ft (87.4 sqm) approx.



TOTAL FLOOR AREA: 2217 sq ft (205.9 sqm) approx.

Contact Details

79 Wales Road
Kiveton Park
Sheffield
South Yorkshire
S26 6RA

www.bellcoestates.com

03333 580590

6b Hillside Green
Harthill
ROTHERHAM
S26 7AB

Energy rating

B

Valid until
15 June 2033

Certificate number
0350-3446-7260-2597-8701

Property type Detached house

Total floor area 282 square metres

Agents Note: Whilst every care has been taken to prepare these sales particulars, they are for guidance purposes only. All measurements are approximate and for general guidance purposes only and whilst every care has been taken to ensure their accuracy, they should not be relied upon and potential buyers are advised to recheck the measurements