



Turner Crescent, Hauxton

+44 (0) 1223 508050

[lettings@cookecurtis.co.uk](mailto:lettings@cookecurtis.co.uk)

[www.cookecurtis.co.uk](http://www.cookecurtis.co.uk)

A well-presented, two-bedroom apartment on the first floor of a modern development in Hauxton, conveniently located for access to Addenbrookes, the M11 or Cambridge City Centre.

£1,400 pcm

Turner Crescent,  
Cambridge, CB22 5GE



This apartment is on the first floor of a modern building, just 1.5 miles from Trumpington therefore conveniently located for access to Addenbrookes, the M11 and Cambridge City Centre.

There is an open plan living / kitchen area opening on to a balcony. The kitchen is fully equipped with white goods; a fridge / freezer, washer / dryer, dishwasher, gas hob and oven.

Both bedrooms are doubles. The master benefits from an ensuite with a shower, WC and basin.

In the entrance hall is a large storage cupboard and a family bathroom comprising a bath with shower over, WC and basin.

The apartment has double glazing, gas central heating, one allocated parking space and communal bin and bicycle stores.

Available immediately to a professional household, one child considered.

Video tour available.

-----

Hauxton is a popular, historic South Cambridgeshire village, located just four miles from the centre of Cambridge and within easy reach of the A10, M11 and the park and ride. The village has a range of amenities including a recreation ground with modern play equipment, sports pitches, an organic health shop, gym, ancient parish church and a well-regarded primary school that goes on to feed either Melbourn or Sawston Village Colleges, with bus services to both. There are more comprehensive facilities, as well as a station providing services into London Liverpool Street, in the neighbouring village of Great Shelford.

There are good cycle routes to Cambridge, including a newly opened cycleway across to Trumpington Park and Ride and on to the Guided Busway cycle route, plus a regular bus service to Addenbrooke's and into the city.







67.4 sqm / 725 sqft

---

2 bed, 2 bath, 1 recep

---

Council tax - C

---

EPC - B / 86

---

Gas central heating

---

Allocated parking

---

Balcony

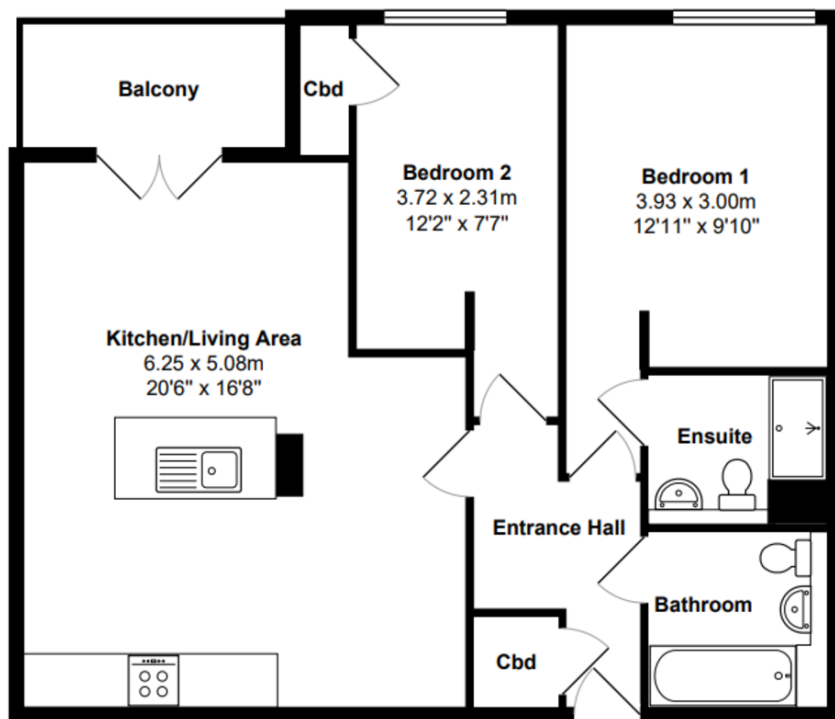
---

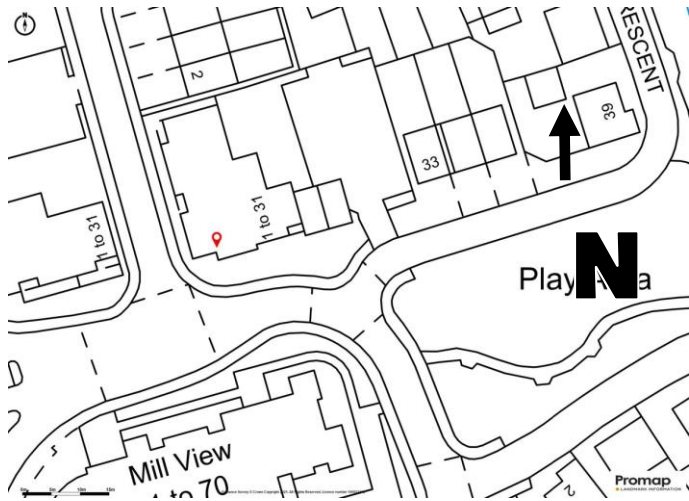
Available 3rd November 2023

---



# Turner Crescent





Hauxton is a popular, historic South Cambridgeshire Village, located just four miles from the centre of Cambridge and within easy reach of the A10, M11 and the park and ride. The village has a range of amenities including a recreation ground with modern play equipment, sports pitches, an organic health shop, gym, ancient parish church and a well-regarded primary school that goes on to feed either Melbourn or Sawston Village Colleges, with bus services to both. There are more comprehensive facilities, as well as a station providing services into London Liverpool Street, in the neighbouring village of Great Shelford. There are good cycle routes to Cambridge, including a newly opened cycleway across to Trumpington Park and Ride and on to the Guided Busway cycle route, plus a regular bus service to Addenbrooke's and into the city.

COOKE  
CURTIS  
& CO