



6 Bullfinch Close, Horsham

Guide Price £375,000 - £385,000

6 Bullfinch Close

Horsham, Horsham

Guide price range £375,000 - £385,000. A well presented, two double bedroom, Semi Detached home situated in a desirable location on the North side of Horsham within easy access to excellent schools and major transport links. Upon entering through the porch; the cloakroom is situated opposite with a low level wc and hand basin. The spacious lounge benefits from a large bay window and a Marble Fireplace creating a cosy room with stair case leading to the first floor with under stair storage. The open plan kitchen / dining room provides an ideal space for socialising with family and friends. The Howdens Kitchen features a range of white wall and base units with contrasting worksurfaces. The separate conservatory provides an extra living space with double doors opening onto the patio terrace. From the conservatory is a useful utility space with door access into the single garage which benefits from power and lighting.

To the first floor you are presented with two bedrooms; with bedroom one enjoying two windows and a storage cupboard. The main bathroom includes Travertine tiling, there is a bath featuring an over head shower, hand basin and low level wc.

Council Tax band: D

Tenure: Freehold

EPC Energy Efficiency Rating: E

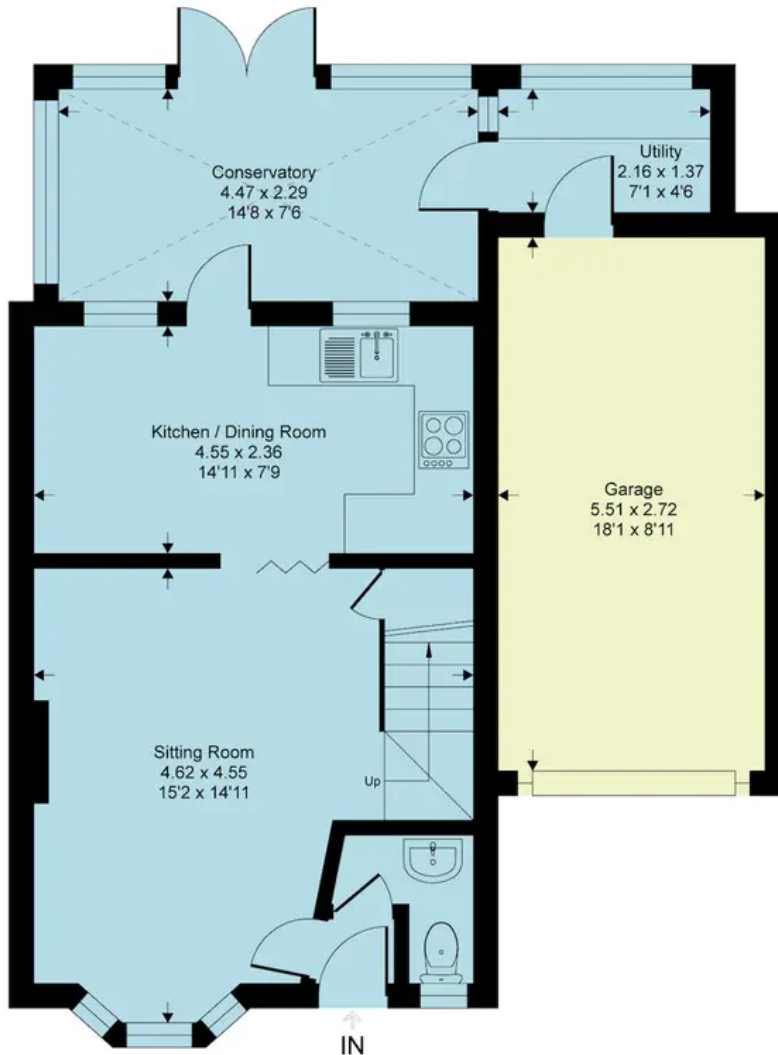
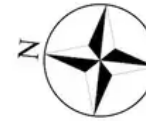
EPC Environmental Impact Rating: E

- Two bedroom Semi Detached home
- Garage and driveway parking
- Delightful rear garden
- Quiet cul de sac location
- Separate sitting room with fireplace
- Open plan kitchen / dining room

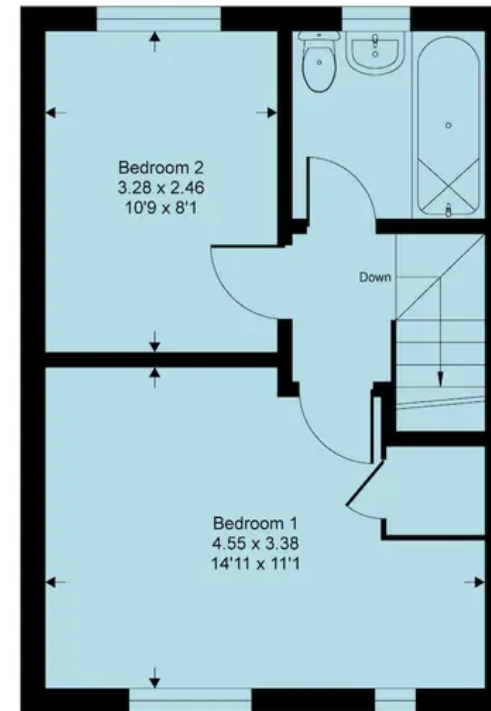


Bullfinch Close, RH12

Approximate Gross Internal Area = 75 sq m / 809 sq ft
Approximate Garage Internal Area = 15 sq m / 162 sq ft
Approximate Total Internal Area = 90 sq m / 971 sq ft



Ground Floor



First Floor

This floor plan is for representation purposes only as defined by the RICS code of Measuring Practice (and IPMS where requested) and should be used as such by any prospective purchaser. Whilst every attempt has been made to ensure the accuracy contained here, the measurement of doors, windows and rooms is approximate and no responsibility is taken for any error, omission or mis-statement. Specifically no guarantee is given on the total area of the property if quoted on the plan. Any figure provided is for guidance only and should not be used for valuation purposes.

Copyright Within Walls. 2023 - Produced for Henry Adams



Henry Adams - Horsham

Henry Adams HRR Ltd, 50 Carfax, Horsham - RH12 1BP

01403 253271

horsham@henryadams.co.uk

www.henryadams.co.uk/

Agents Note - Our particulars are for guidance only and are intended to give a fair overall summary of the property. They do not form part of any contract or offer, and should not be relied upon as a statement or representation of fact. Measurements, areas and distances are approximate only. Photographs may include lifestyle shots and pictures of local views. No undertaking is given as to the structural condition of the property, or any necessary consents or the operating ability or efficiency of any service, system or appliance. Please ask if you would like further information, especially before you travel to the property.