

FOR SALE



Park Close, Poole
£475,000


MARTIN&CO

Park Close, Poole

£475,000

- End of Terrace Town House
- Three double bedrooms
- Three bathrooms
- Two allocated parking spaces
- Vacant possession offered

Park Close is a select development within close proximity of Poole Park, Ashley Cross and Poole town centre, offered for sale is this stunning three bedroom end of terrace town house with three bathrooms, open plan

Park Close is a select development within close proximity of Poole Park, Ashley Cross and Poole town centre, offered for sale is this stunning three bedroom end of terrace town house with three bathrooms, open plan living space and two allocated parking spaces.

The property is set over three floors and is open plan living on the ground floor, which comprises of a modern fitted kitchen/breakfast room with some integrated appliances along with ample eye and base level units, this in turn has a small step down to the living area with double glazed doors leading to the low maintenance garden area. The ground floor benefits from underfloor heating and there is also a downstairs cloakroom.



The first floor has two double bedrooms one being ensuite with a further family bathroom on this floor, the bedroom with the ensuite has a fitted wardrobe, the property also benefits from double glazing gas fired central heating and has a bright sunny aspect throughout.

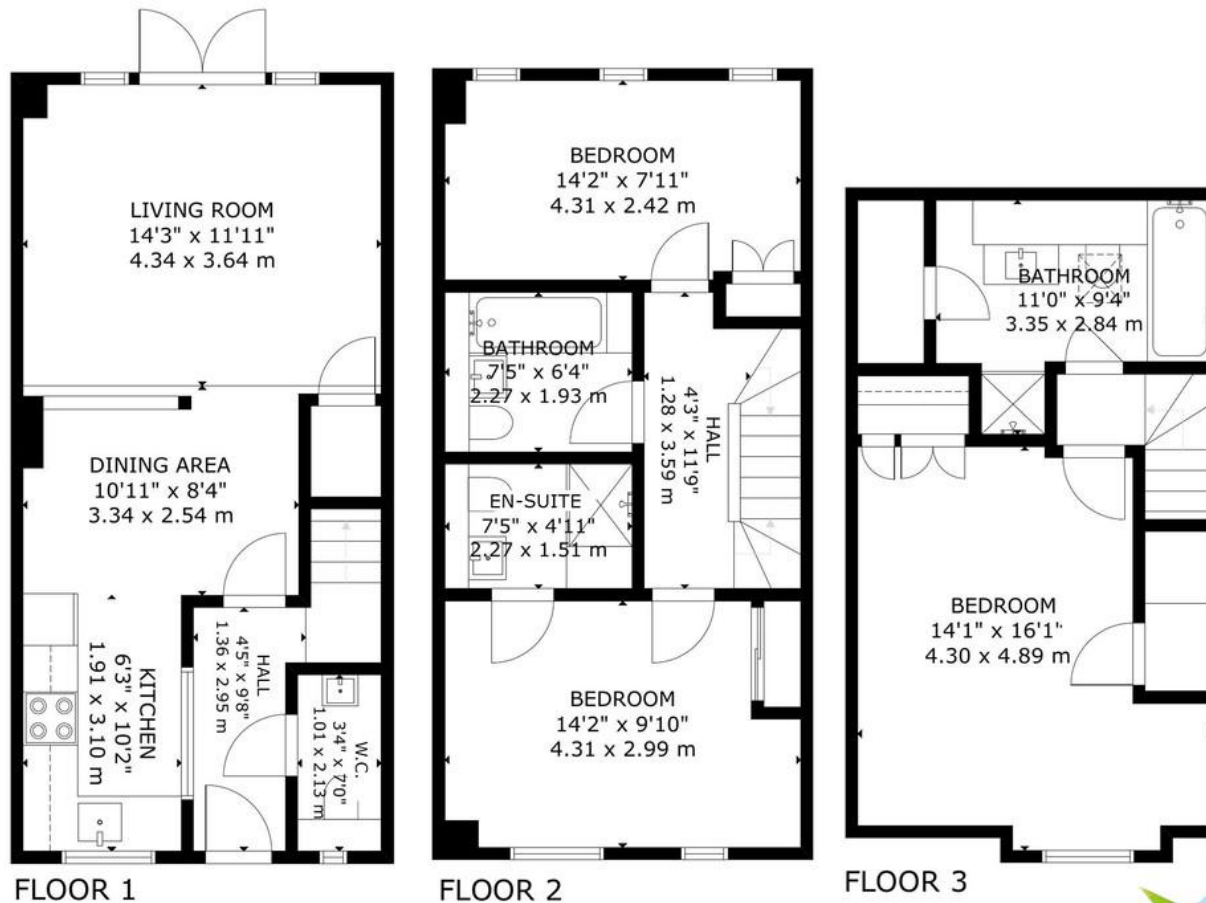
The second floor has a master bedroom with large double bedroom and fitted wardrobes and a further bathroom suite.

Externally the property benefits from two allocated parking spaces, the rear garden is laid to patio and low maintenance.



Energy Efficiency Rating		
	Current	Potential
Very energy efficient - lower running costs		
(92-100) A		
(81-91) B		88
(69-80) C	78	
(55-68) D		





GROSS INTERNAL AREA
 TOTAL: 113 m²/1,220 sq ft
 FLOOR 1: 40 m²/433 sq ft. FLOOR 2: 40 m²/431 sq ft. FLOOR 3: 33 m²/356 sq ft



Martin & Co Poole

109 Commercial Road • • Poole • BH14 0JD
 T: 01202 710171 • E: poole@martinco.com

01202 710171

<http://www.poole.martinco.com>



Accuracy: References to the Tenure of a Property are based on information supplied by the Seller. The Agent has not had sight of the title documents. A Buyer is advised to obtain verification from their Solicitor. Items shown in photographs including but not limited to carpets, fixtures and fittings are not included unless specifically mentioned within the sales particulars. They may however be available by separate negotiation. Buyers must check the availability of any property and make an appointment to view before embarking on any journey to see a property. No person in the employment of the agent has any authority to make any representation about the property, and accordingly any information given is entirely without responsibility on the part of the agents, sellers(s) or lessors(s). Any property particulars are not an offer or contract, nor form part of one. **Sonic / Laser Tape:** Measurements taken using a sonic / laser tape measure may be subject to a small margin of error. **All Measurements:** All Measurements are Approximate. **Services Not tested:** The Agent has not tested any apparatus, equipment, fixtures and fittings or services and so cannot verify that they are in working order or fit for the purpose. A Buyer is advised to obtain verification from their Solicitor or Surveyor.

