

**For Rent**



## People Make Places



**Berwick Street, Soho, W1**

2 bedrooms | 667 sq ft

£795 pw

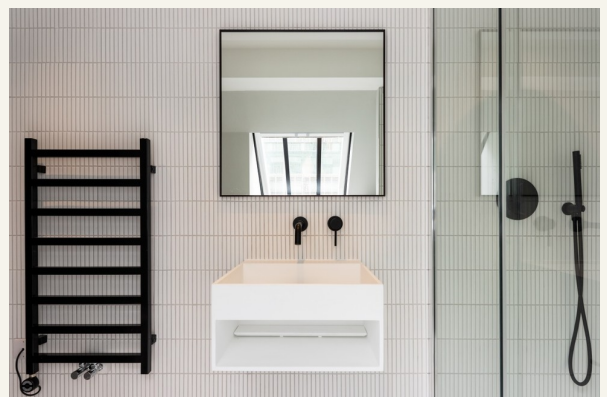




A refurbished, one bedroom apartment to rent in central Soho. Located on the 1st floor (walk-up) there is a double bedroom & shower room. The kitchen is open plan to the reception room. Available immediately on an unfurnished basis, 3 year contract with a 6 months mutual break clause.

#### What you need to know

- One bedroom
- One shower room
- First floor (walk up)
- Contemporary finish
- Double glazing
- Unfurnished
- Wooden floors throughout
- Short walk to Kingly Court
- Close to Tottenham Court Road tube station
- Available immediately



**Berwick Street, Soho, W1**



### Overview

This one bedroom apartment is ideally located on Berwick Street, in central Soho. The apartment is arranged over two floors and features an open plan kitchen/reception on the 3rd floor along with a bedroom with en-suite bathroom. The fourth floor has a further bedroom and shower room.

Council tax band E.

WHAT WE LOVE Refurbished

Modern

First floor apartment

Fantastic restaurants on the doorstep

Great location.

WHAT YOU NEED TO KNOW No lift

Wood flooring

Gas central heating

Electric hob

Dishwasher.



**Berwick Street, Soho, W1**

# People Make Places

London is collection of inspiring urban villages and one of the most exciting places in the world to live, work & play.

We work with both property owners and their occupiers, sharing the story of these vibrant neighbourhoods, conveying the unique soul & energy to future custodians, the people who'll keep them buzzing.

And unlike many real estate businesses we're not just about buildings, because streets & buildings don't make a neighbourhood.

We're about building relationships, because **people make places**.

MISINTERPRITATION ACT (COPYRIGHT) DISCLAIMER: Tavistock Bow Ltd for themselves and for the vendor(s) of this property whose agents thy are, given notice that: 1. These particulars do not constitute, not constitute any part of, an offer or contract. 2. None of the statements contained in these particulars as to the property are to be relied on as statements or representations of fact. 3. Any intending purchaser or lessee must satisfy themselves by inspection or otherwise as to the correctness of each of the statements contained in these particulars. 4. The vendor(s) or lessor(s) do not make or give and neither Tavistock Bow Ltd nor any person in their employment has any authority to make or give any representation or warranty whatever in relation to this property. Finance Act 1989, Unless otherwise stated all prices and rents are quote exclusive of VAT. Property Misrepresentation Act 1991; These details are believed to be correct at the time of compilation but may be subject to subsequent amendment.

Follow us:     @tavistockbow

Score	Energy rating	Current	Potential
92+	<b>A</b>		
81-91	<b>B</b>		
69-80	<b>C</b>		<b>77 C</b>
55-68	<b>D</b>	<b>64 D</b>	
39-54	<b>E</b>		
21-38	<b>F</b>		
1-20	<b>G</b>		

Berwick Street, W1

Approximate Gross Internal Area 62 sq m / 667 sq ft

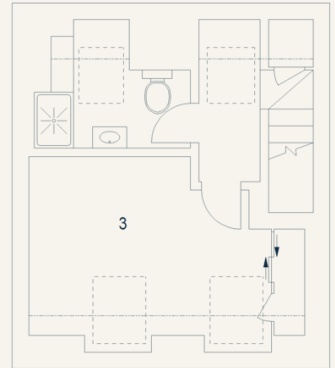


1 Kitchen /  
Reception Room  
4.91 x 3.66M  
16'1" x 12'

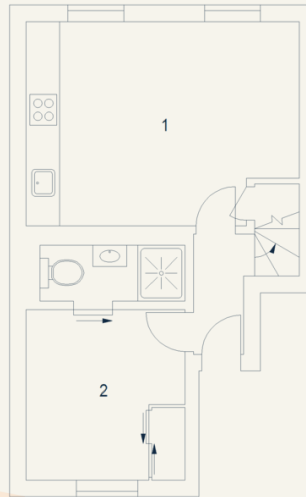
2 Bedroom  
3.05 x 2.92M  
10' x 9'7"

3 Bedroom  
4.94 x 3.18M  
16'2" x 10'5"

 Under 1.5m head height



Third Floor



Second Floor

Floor Plan produced for Tavistock Bow by Mays Floorplans © . Tel 020 3397 4594  
Illustration for identification purposes only, not to scale.

**tavistockbow**

21 New Row, Covent Garden,  
London, WC2N 4LE

t: 020 7477 2177  
e: hello@tavistockbow.com  
w: tavistockbow.com



**Berwick Street, Soho, W1**