

Whitstone Close

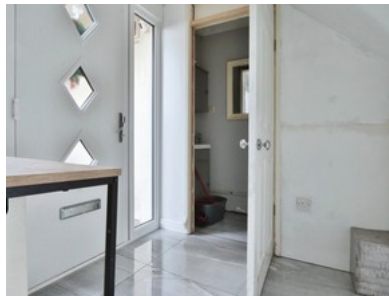
£95,000-£100,000



beercocks
valuing people, not just houses



- ✔ Ideal For First Time Buyers
- ✔ Three Bedrooms
- ✔ Quiet Residential Area Close To Schools
- ✔ Extended Front & Rear Gardens
- ✔ Close To Local Amenities And Schools & Kingswood
- ✔ Freehold
- ✔ Council Tax Band- A
- ✔ Beautiful, Extended Modern Home
- ✔ Must Be Viewed
- ✔ Open Plan Kitchen/dining And Living To Rear



Bedroom  3 Bathroom  1 Reception  1

Guide Price

£95,000