



The Hawthorns, Ecclestone

PR7 5QW

£300,000





Fabulous and beautifully presented two bedroom true bungalow in a very popular residential area close to village amenities, primary transport routes and countryside walks. With 940 square feet of accommodation this lovely home is available with no upward chain. The driveway can accommodate several vehicles and leads past the garden to the main entrance. From the moment you step into the property you get the feeling that this is something special. The hallway opens on one side to the living room with gas stove in imposing hearth and bifold doors to the garden, and to the heart of the house on the other. With vaulted ceiling the kitchen comprises a range of wall and base units with breakfast bar and ceramic sink, and appliances including range cooker, dishwasher and full height refrigerator and freezer. A separate utility room holds the washing machine and tumble drier and has access both externally and to the store. Bedroom one is a gorgeous double with fitted wardrobes and views over the garden through the French windows. Bedroom two is currently used as a dressing room and the elegant bathroom comprises large bath, rainfall mixer shower in cubicle, wc, wash hand basin on vanity unit and heated towel rail. Externally the private, southwest facing garden is mainly laid to lawn with seating area and summerhouse making this the perfect place to relax and entertain.

Fabulous and beautifully presented two bedroom true bungalow in a very popular residential area close to village amenities, primary transport routes and countryside walks. With 940 square feet of accommodation this lovely home is available with no upward chain.

Council Tax band: B

Tenure: Freehold

- Beautiful true bungalow
- Two double bedrooms
- Southwest facing garden
- Over 900 square feet
- Sought after location
- No upward chain



Eccleston Branch

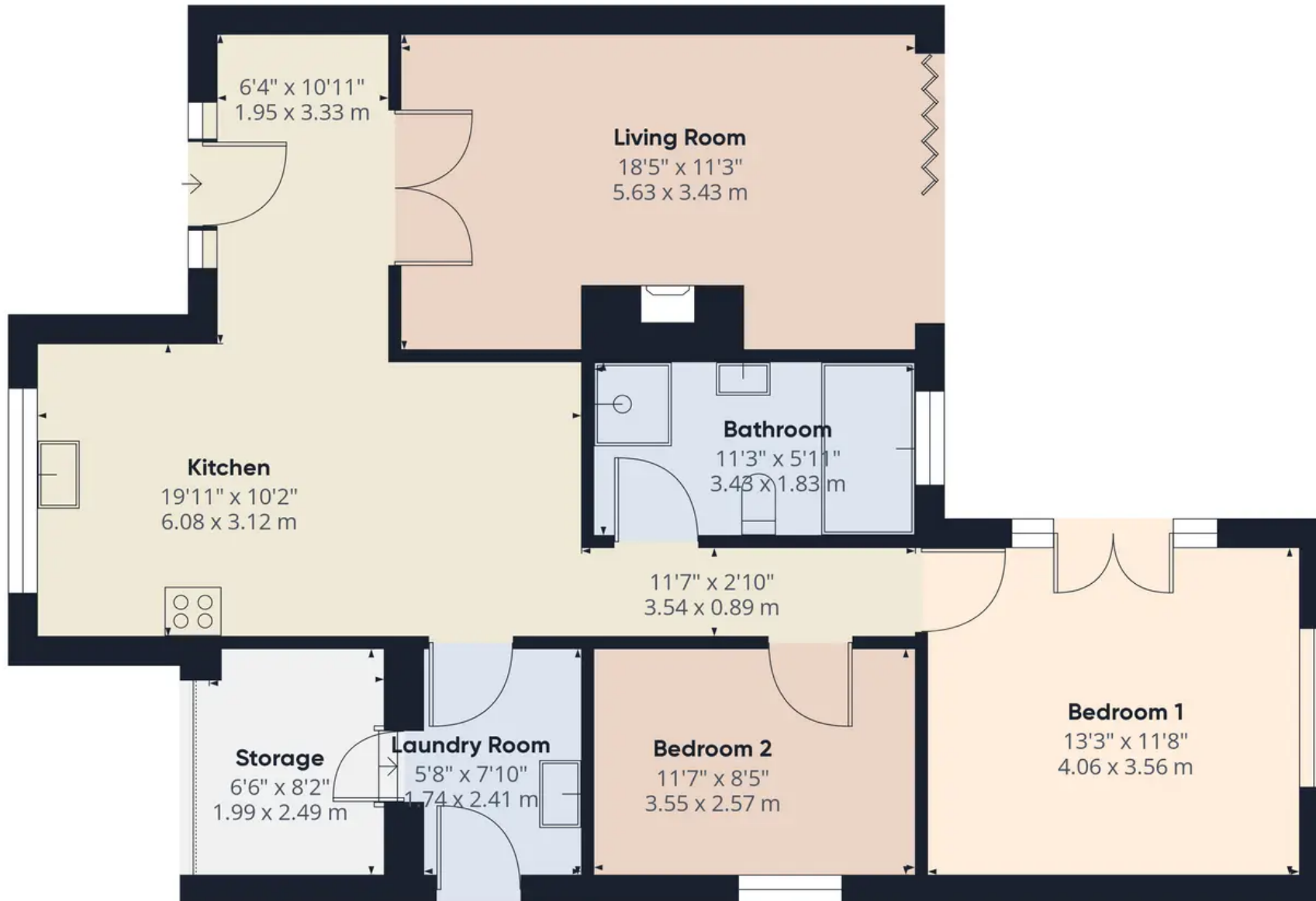
265 The Green, Eccleston, PR7 5TF
01257 451673

Coppull Branch

244 Spendmore Lane, Coppull, PR7 5DE
01257 794588

www.hometruthslancs.co.uk
office@hometruthslancs.co.uk





Approximate total area⁰
944.01 ft²
87.7 m²

Excluding balconies and terraces

While every attempt has been made to ensure accuracy, all measurements are approximate, not to scale. This floor plan is for illustrative purposes only.

GIRAFFE360