



2

Bedrooms

1

Bathroom



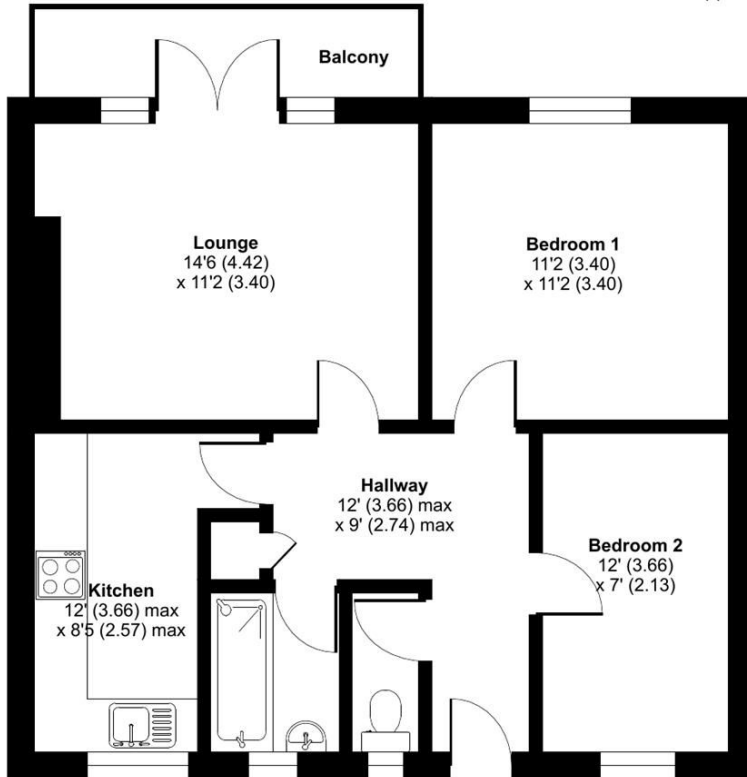
This well presented two bedroom apartment is situated on the 5th floor of this ex-local development located in the heart of Bow. Over 619 Sq. Ft of internal living space, this property offers a bright living space which leads to a private balcony, fitted kitchen, two spacious sized double bedrooms, a family bathroom and separate WC.

Brimsdown House is within moments of many local shops , restaurants and school. This amazing location offers close proximity to some of East London's major green spaces and attractions including the popular Olympic Park.

Transport Links, Devon's Road DLR and Bromley By Bow Underground are both a short walk away. For motorists you have a selection of 'A' roads which allow easy access around London and to the City.

**Devas Street, London, E3**

Approximate Area = 619 sq ft / 57.5 sq m  
For identification only - Not to scale



FIFTH FLOOR

RICS Certified Property Measurer  
Floor plan produced in accordance with RICS Property Measurement Standards incorporating International Property Measurement Standards (IPMS2 Residential). © nlschem 2023. Produced for Movewise. REF: 952773

Energy Efficiency Rating		
	Current	Potential
Very energy efficient - lower running costs		
(92 plus) <b>A</b>		
(81-91) <b>B</b>		
(69-80) <b>C</b>		69
(55-68) <b>D</b>	55	
(39-54) <b>E</b>		
(21-38) <b>F</b>		
(1-20) <b>G</b>		
Not energy efficient - higher running costs		
<b>England &amp; Wales</b>		EU Directive 2002/91/EC

