



## 4 Wasteneys Road | Todwick | Sheffield | S26 1JF

£1,100 pcm

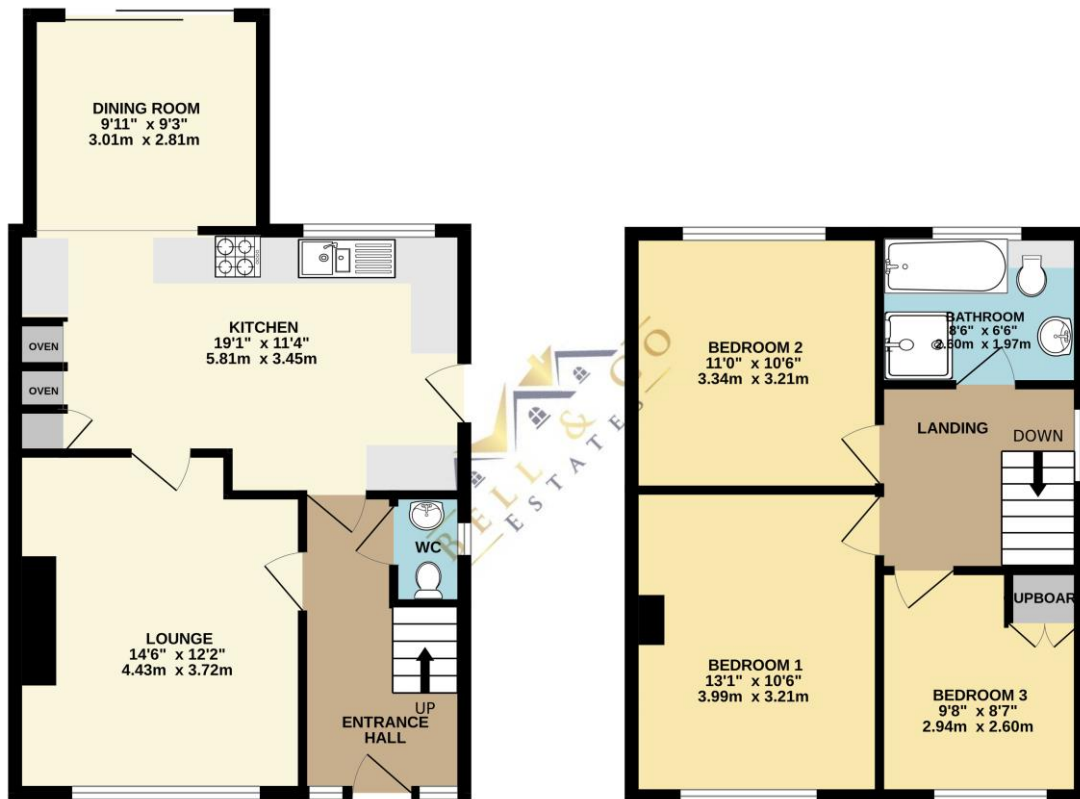
Bell & Co Estates are pleased to present this THREE BEDROOM semi detached home in Todwick for rent. In brief the property comprises of spacious entrance hallway with understairs storage and downstairs wc, front facing spacious lounge, LARGE OPEN PLAN modern fitted kitchen with dining area, and rear door access to the garden. Upstairs are TWO LARGE BEDROOMS, one with fitted wardrobes and drawers, further good sized single bedroom with fitted wardrobe and family bathroom complete with separate shower cubicle, bath, wash basin with storage and wc. Within the loft is a further room accessed by a pull down ladder, this could be used as an office or large storage space with Velux windows and power. To the front of the property is a large driveway with grassed area, to the side is the detached garage and access to the rear garden where you will find a patio area, decked area and lawn. Close to all local amenities, schools and transport links this would make a great family home! Call now to arrange your viewing.

- Three Bedroom Semi Detached
- Spacious Throughout
- Large Entrance Hallway
- Downstairs WC
- Spacious Lounge
- Modern Fitted Kitchen with Dining Area
- Driveway with Garage
- Enclosed Rear Garden



GROUND FLOOR  
542 sq.ft. (50.3 sq.m.) approx.

1ST FLOOR  
456 sq.ft. (42.4 sq.m.) approx.



## Contact Details

79 Wales Road  
Kiveton Park  
Sheffield  
South Yorkshire  
S26 6RA

[www.platinumportfoliobuilder.co.uk](http://www.platinumportfoliobuilder.co.uk)

03333 580590

4 Wasteney Road  
Todwick  
SHEFFIELD  
S26 1JF

Energy rating

C

Valid until  
**22 November 2033**

Certificate number  
**2921-4231-0206-6842-1155**

**Property type** Semi-detached house

**Total floor area** 96 square metres

Agents Note: Whilst every care has been taken to prepare these sales particulars, they are for guidance purposes only. All measurements are approximate and for general guidance purposes only and whilst every care has been taken to ensure their accuracy, they should not be relied upon and potential buyers are advised to recheck the measurements