



209 Tangier Road, Baffins

Portsmouth

Offers in Region of £360,000





209 Tangier Road

Baffins, Portsmouth

This large three bedroom Baffins home is located directly opposite Tangier Playing Fields so with that lovely open space in front of you we think this would a great family home! It's also close to good schools and an abundance of independent convenience shops and cafe's further along Tangier Road. The Eastern Road is easily accessible too as is the M27 so all in all this a great location. The front door gives you access to the bright hallway with it's timber front door and beautiful stained glass surrounds. It's a good size too with plenty of space for coats and shoes. From here, you'll see the Lounge on the right hand side with it's stained glass bay window and fireplace. From here you'll see the Dining Room which in turn leads through into a good size conservatory. The kitchen has a range of modern fitted wall and base cabinets giving you plenty of both storage and worktop space. There is also a door which gives you access into the garden.

On the first floor you'll find a nice size landing area which leads to three good size bedrooms, two large double rooms and a good size single and a modern bathroom. The front double bedroom also overlooks the playing fields while the rear double bedroom overlooks the rear garden.

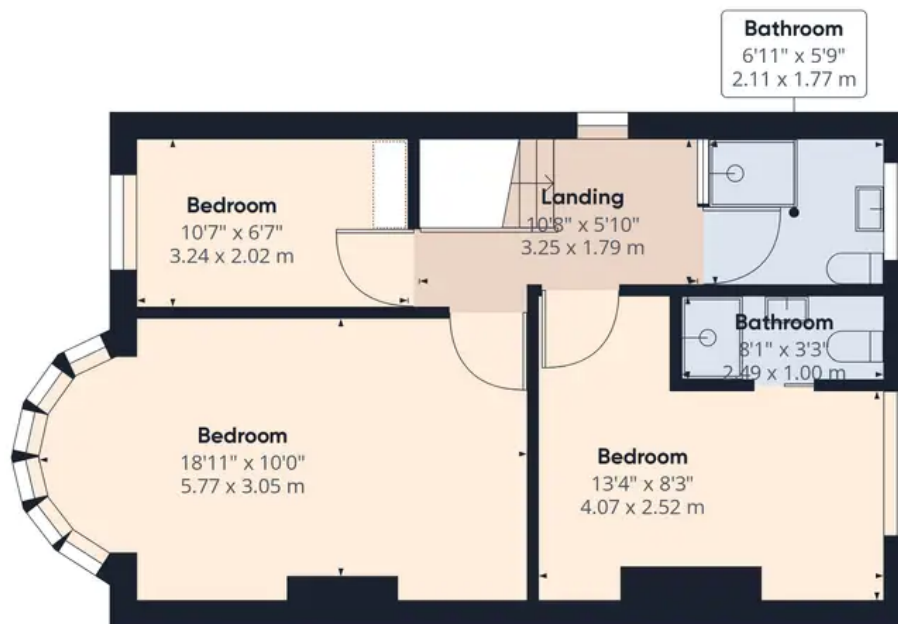
Outside the front garden faces south and provides you with ample off road parking for several vehicles. The rear garden is mainly paved and a gives you a good size private space to relax in. You'll also find a large double garage here to which we think would make a great workshop or maybe even a home office if needed? Ready to move in to but with a potential to upgrade the décor, this really is a great opportunity for any family looking for more space in this popular area of Portsmouth.

Council Tax band: C Tenure: Freehold





Ground Floor Building 1



Floor 1 Building 1



Ground Floor Building 2

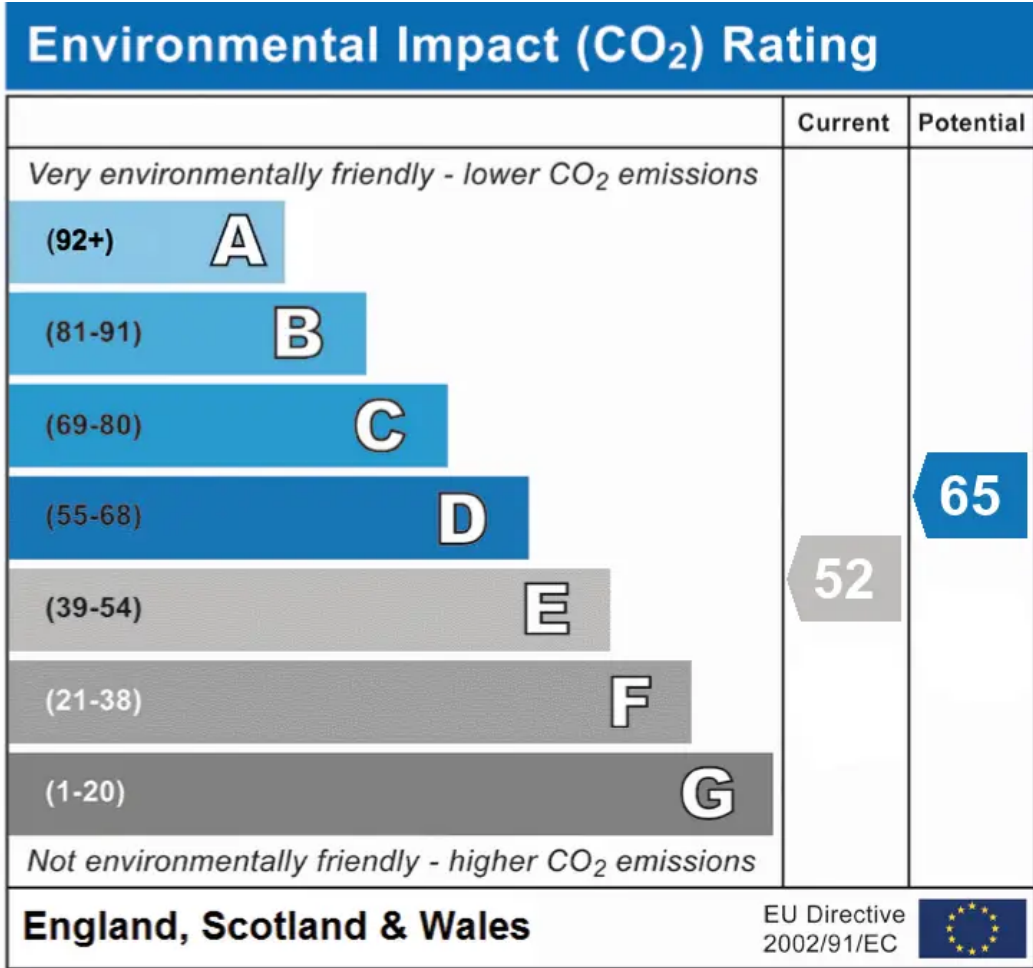
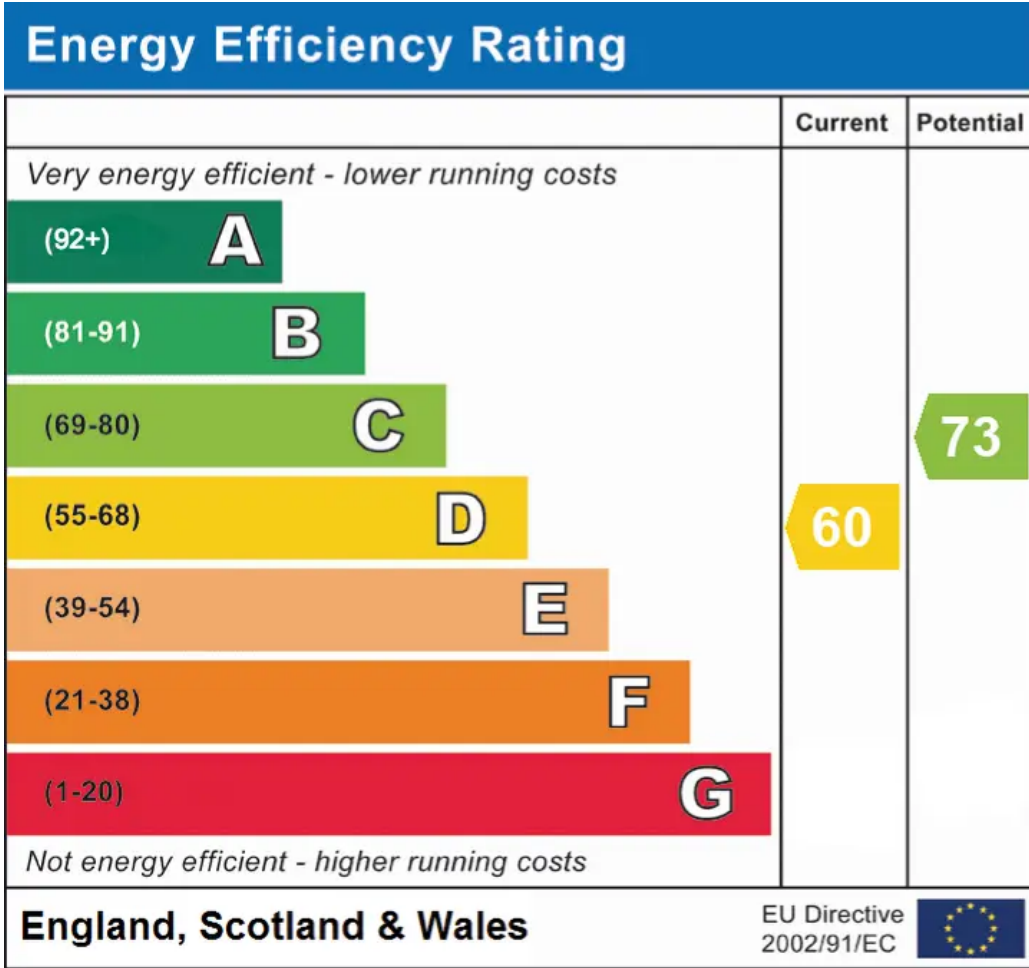
Approximate total area¹⁾

1514.77 ft²
140.73 m²

Excluding balconies and terraces

While every attempt has been made to ensure accuracy, all measurements are approximate, not to scale. This floor plan is for illustrative purposes only.

GIRAFFE360



Chinneck Shaw

Bridge House, Milton Road, Portsmouth – PO3 6AN

023 9282 6731

hello@chinneckshaw.co.uk

www.chinneckshaw.co.uk/

Chinneck Shaw, Bridge House, Milton Road, PO3 6AN Consumer Protection from Unfair Trading Regulations 2008: These details are for guidance only and complete accuracy cannot be guaranteed. If there is any point which is of particular importance, verification should be obtained. The do not constitute a contract or part of a contract. All measurements are approximate. No guarantee can be given with regard to planning permissions or fitness for purpose. No apparatus, equipment, fixture or fitting has been tested. Items shown in the photographs are NOT necessarily included. Interested Parties are advised to check availability and make an appointment to view before travelling to see a property.