

26 Windsor Court Windsor Road, Barry
£118,000



26 Windsor Court Windsor Road

Barry, Barry

Stunning one bedroom apartment with picturesque channel views. Fresh & contemporary interior, flooded with natural light. Generously proportioned bedroom with ample storage & beautiful views.

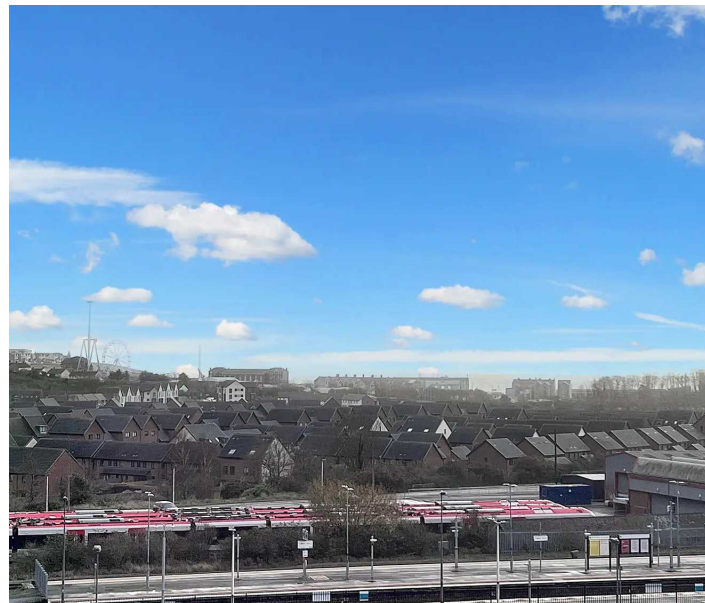
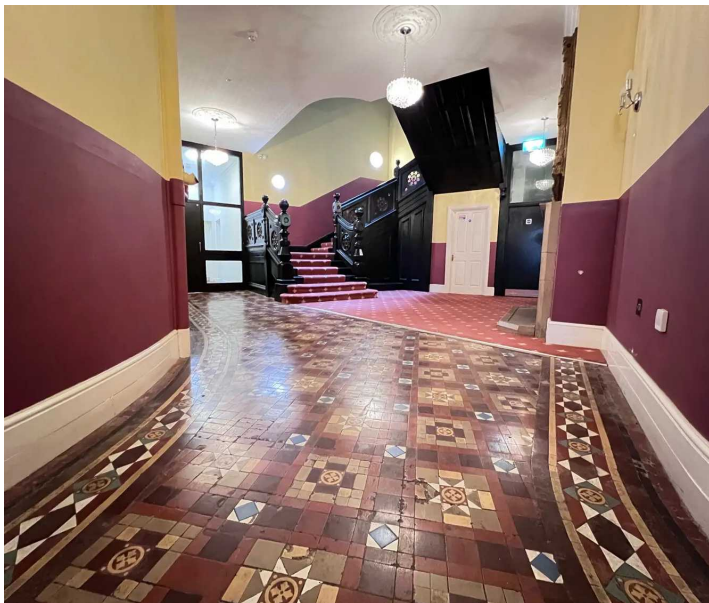
Council Tax band: E

Tenure: Share of Freehold

EPC Energy Efficiency Rating: C

EPC Environmental Impact Rating: C

- EPC C76
- NO ONWARD CHAIN
- STUNNING CHANNEL VIEWS
- IDEAL FIRST TIME BUY
- NEW CARPETS THROUGHOUT
- ONE BEDROOM APARTMENT
- EICR CERTIFICATE
- COMMUNAL GYM & LAUNDRY ROOM





Hallway

Accessed through front door with a spy hole, wall mounted intercom system, new carpet, smooth walls and ceiling and an electric heater. Doors leading off to the shower room, lounge, storage cupboard and bedroom.

Shower Room

6' 2" x 5' 0" (1.88m x 1.52m)

Matching vinyl tile flooring to the kitchen, fully tiled walls, shower cubicle with a folding door and a thermostatic shower inset, matching WC and washbasin, shaver point, inset ceiling lights, extractor and an upright heated towel rail.

Lounge

14' 1" x 15' 6" (4.29m x 4.72m)

Brand new carpet, smooth walls and ceiling, two large sash double glazed windows with channel views, plenty of chrome sockets, two wall mounted electric heaters and open access to the kitchen.

Kitchen

10' 1" x 7' 9" (3.07m x 2.36m)

A good range of eye and base level units with complementing work surfaces, splashback, inset stainless steel sink unit with a mixer tap, inset electric hob with an oven under and cooker hood over, integrated fridge with freezer compartment, integrated dishwasher, inset ceiling lights, extractor and a vinyl tiled floor.

Storage Cupboard

6' 3" x 4' 11" (1.91m x 1.50m)

New carpet, power points, lighting and a sloping ceiling.





Bedroom

11' 0" x 10' 6" (3.35m x 3.20m)

New carpet, smooth walls and ceiling, double glazed sash window with channel views, electric heater, chrome sockets and door to a storage cupboard. Measurements are excluding the deep recess. 5.06m including recess

Bedroom Storage Cupboard

New carpet, smooth walls and ceiling, lighting, power points, housing the water tank with ample room for storage. The water tank was last inspected in March 2023.

Communal Laundry Room

The building has a communal laundry room for residents use.

Communal Gym

The building has a communal gym for residents use.



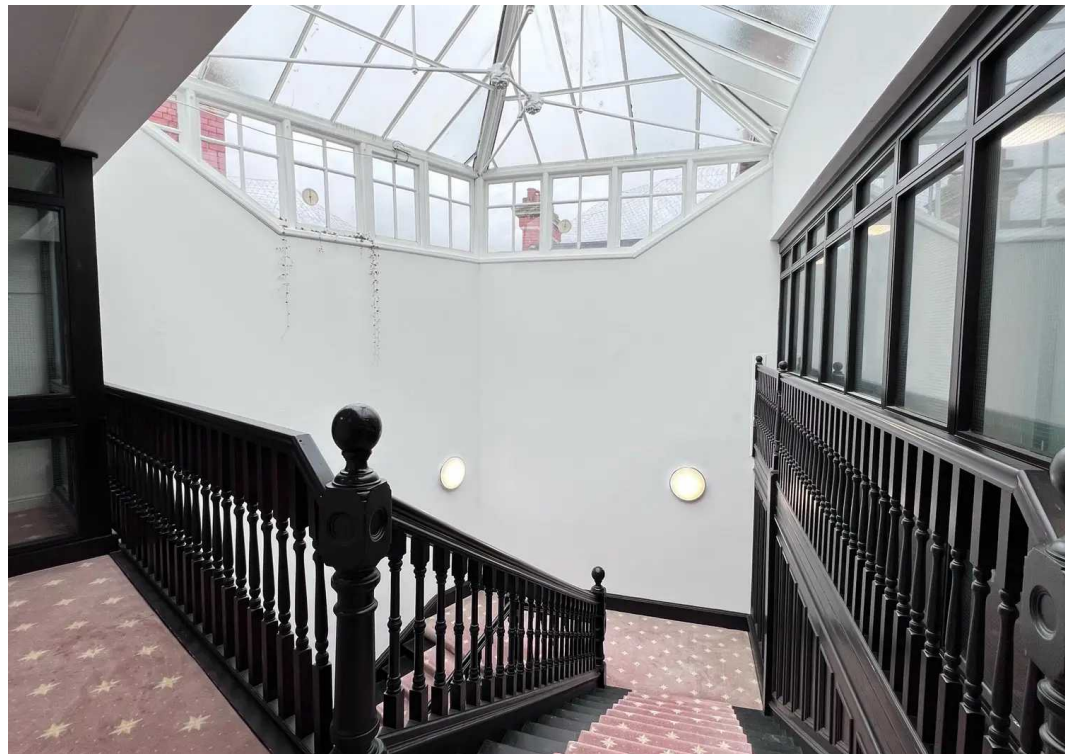
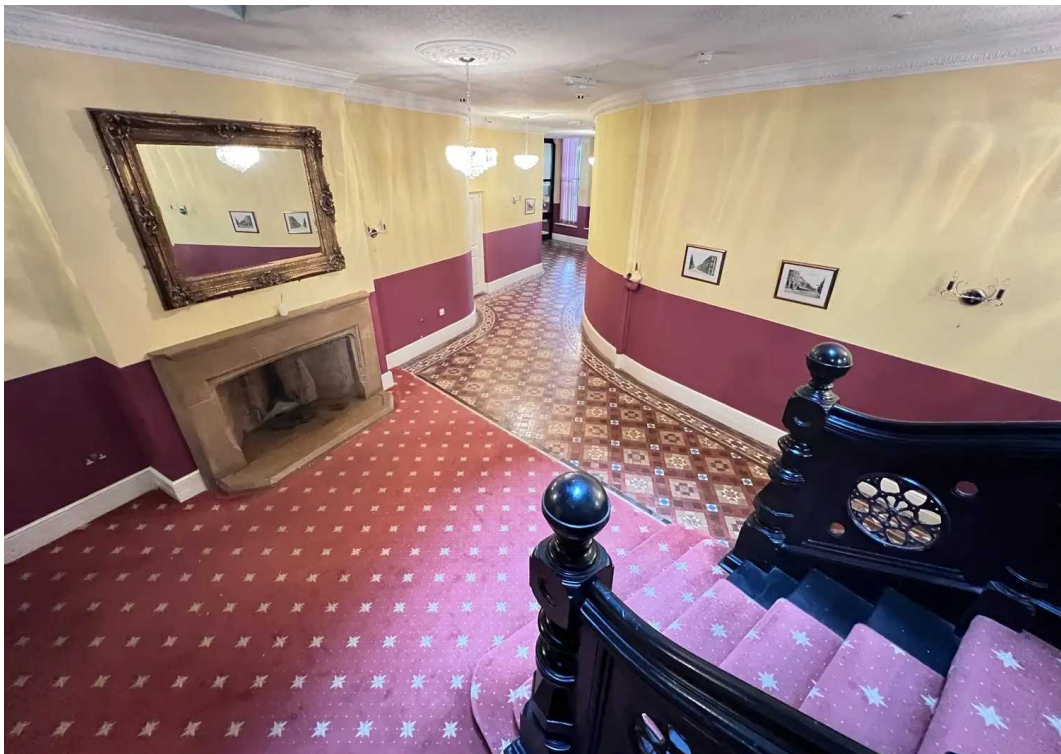


SECURE GATED

1 Parking Space

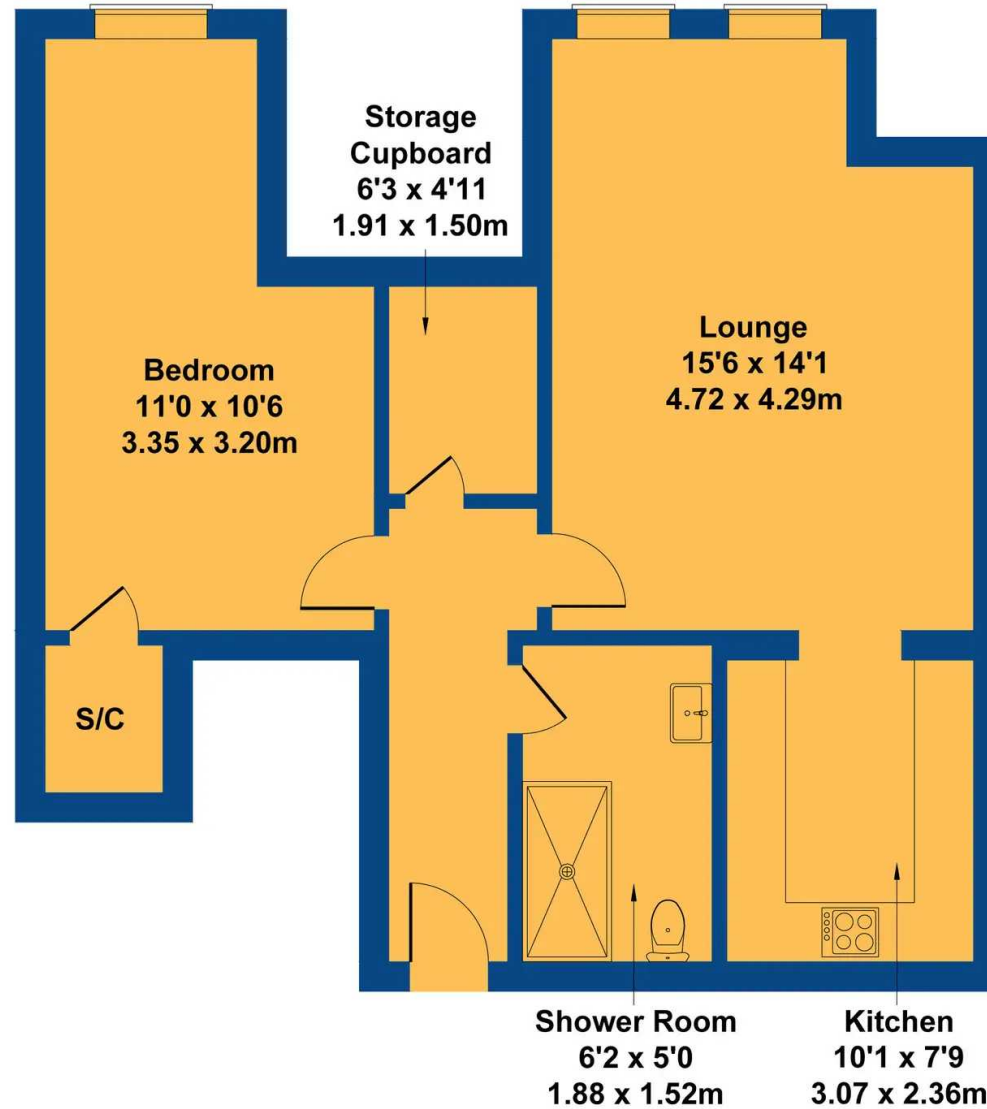
Option for secure parking subject to joining a waiting list with the management company and a charge of £100 per six months





26 Windsor Court

Approximate Gross Internal Area
753 sq ft - 70 sq m



Not to Scale. Produced by The Plan Portal 2023
For Illustrative Purposes Only.



Chris Davies Estate Agents

Chris Davies Estate Agents, 24 High Street - CF62 7EA

01446 700007

barry@chris-davies.co.uk

www.chris-davies.co.uk/

HELPFUL INFORMATION - whilst we try to ensure our sales particulars are complete, accurate and reliable, if there is any point which is particularly important, please ask and we will be happy to check it, including specific information in respect of commuting links, surroundings, noise, views, or condition. For security purposes, applicants who wish to view will need to provide their name, address and telephone number. All measurements are approximate to the widest and longest points. Buyers are advised to instruct a solicitor to obtain verification of tenure and a surveyor to check that appliances, installations and services are in satisfactory condition.