



5 Thomas Street | Kiveton Park | S26 6QW

Guide Price £100,000 to £110,000

Bell & Co Estates welcome to the market this **DECEPTIVELY SPACIOUS, WELL-PRESENTED, TWO-BEDROOM** terraced property. Of possible interest to a first-time buyer or **INVESTOR** and available to view immediately. In brief the property comprises of; spacious lounge, **MODERN** dining room and kitchen to the ground floor. To the first floor, two **DOUBLE** bedrooms and family bathroom. The loft space is fully boarded and functional for those who would wish to convert this into a further bedroom or an office. Outside, there is a small yard and two **LARGE STORES**, for added storage space outside. Off street parking is available. The property is situated within walking distance to bus routes, local amenities and shops. The major motorway links are easily accessible and just a short drive away from the property. There are both primary and secondary schools within catchment area and some lovely walks nearby. The property is available to view via appointment only, so call our offices today to organise yours!

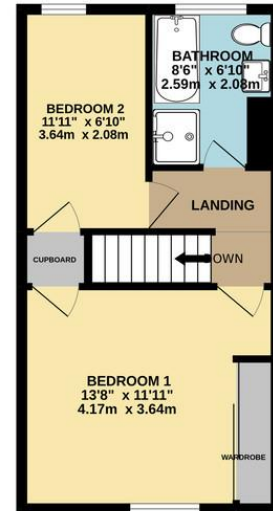
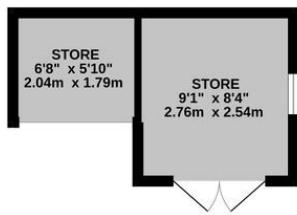
- NO CHAIN!
- TWO BEDROOMS
- LOFT SPACE
- DECEPTIVELY SPACIOUS
- CLOSE TO AMENITIES
- TWO RECEPTION ROOMS
- OFF STREET PARKING
- PERFECT FIRST HOME



BASEMENT
115 sq.ft. (10.7 sq.m.) approx.

GROUND FLOOR
443 sq.ft. (41.2 sq.m.) approx.

1ST FLOOR
361 sq.ft. (33.6 sq.m.) approx.



Contact Details

79 Wales Road
Kiveton Park
Sheffield
South Yorkshire
S26 6RA

www.bellcoestates.com

03333 580590

5 Thomas Street
Kiveton Park
SHEFFIELD
S26 6QW

Energy rating

E

Valid until
20 October 2032

Certificate number
2102-1908-5250-8862-9200

Property type Mid-terrace house

Total floor area 76 square metres

Agents Note: Whilst every care has been taken to prepare these sales particulars, they are for guidance purposes only. All measurements are approximate and for general guidance purposes only and whilst every care has been taken to ensure their accuracy, they should not be relied upon and potential buyers are advised to recheck the measurements