



Redlands Bungalow Banbury Road, Lighthorne
Warwick

 **RDR DASSAUR** Offers Over **£425,000**



Redlands Bungalow Banbury Road

Lighthorne, Warwick

Nestled in a semi-rural location, this detached bungalow presents a unique opportunity to embrace tranquillity on approximately a third of an acre, which offer development potential.

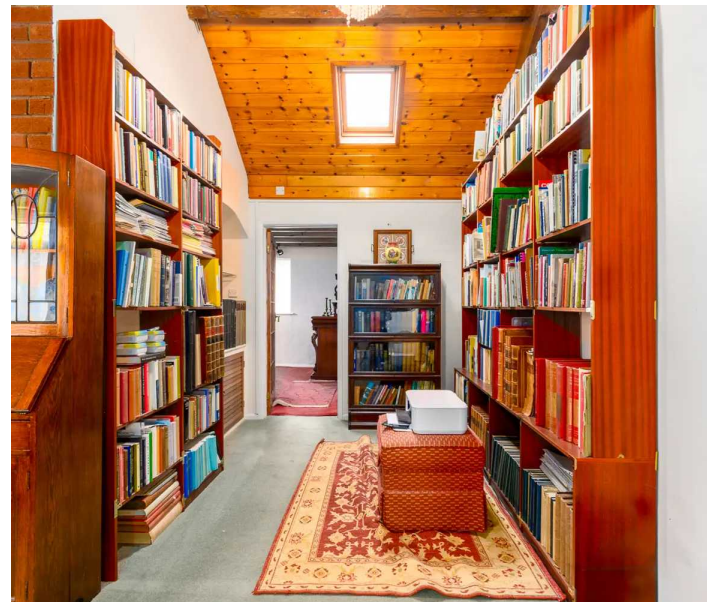
Council Tax band: E

Tenure: Freehold

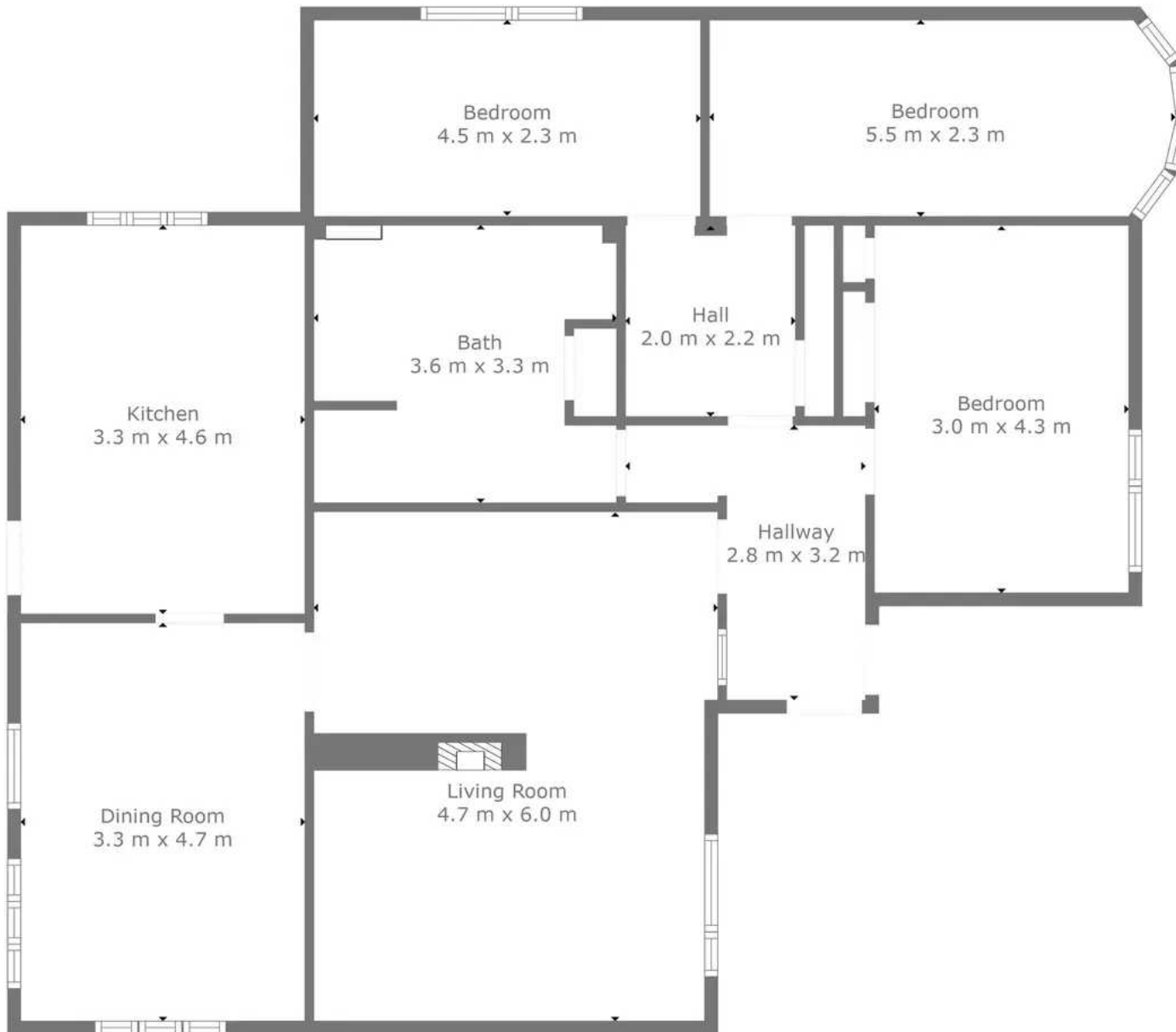
- Bungalow
- Development opportunity
- Set in 1/3 of an Acre land
- Private driveway
- Vaulted ceiling lounge
- Multiple parking spaces



The dual-aspect 15' dining room boasts high-level windows and seamlessly connects to the recently refitted breakfast kitchen. Adorned with maple-effect kitchen units, this culinary space not only offers functionality but also grants access to the rear of the property and scenic views of the side garden.







TOTAL: 123 m²
FLOOR 1: 123 m²

Measurements Are Calculated By Cubicasa Technology. Deemed Highly Reliable But Not Guaranteed.



RDR Dassaur estate agents

Unit 2 Nelson Dale Wharf Street, Warwick - CV34 5LB

01926268989

Admin@RDRDassaur.co.uk

rdrdassaur.co.uk/

