



16 Wentworth Gardens, Holbury
£419,950



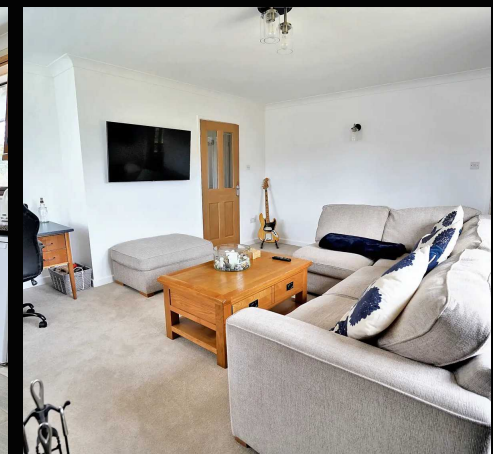
16 Wentworth Gardens

Holbury, Southampton

This deceptive detached bungalow offers versatile accommodation throughout. Internally there are up to three bedrooms, a large lounge, a modern shower room, a well appointed kitchen and a dining room. Outside of the property you will find ample driveway parking, a generous rear garden, a log cabin and a garage. Further features include UPVC double glazing, gas central heating, solar panels and a rainwater harvester. An internal viewing is strongly recommended to fully appreciate the accommodation on offer.

Wentworth Gardens is situated on the edge of Holbury Village where local amenities cater for most every day needs including schools for children of all age groups. Bus services run regularly to other Waterside areas including Hythe Village, where a passenger ferry service operates to Town Quay in Southampton. Proximity to The New Forest National Park as well as the coast enable many outside interests to be enjoyed. There are a number of Recreation Centres throughout the Waterside providing facilities for many indoor and outdoor activities including golf, football, rugby and tennis.

Tenure: Freehold

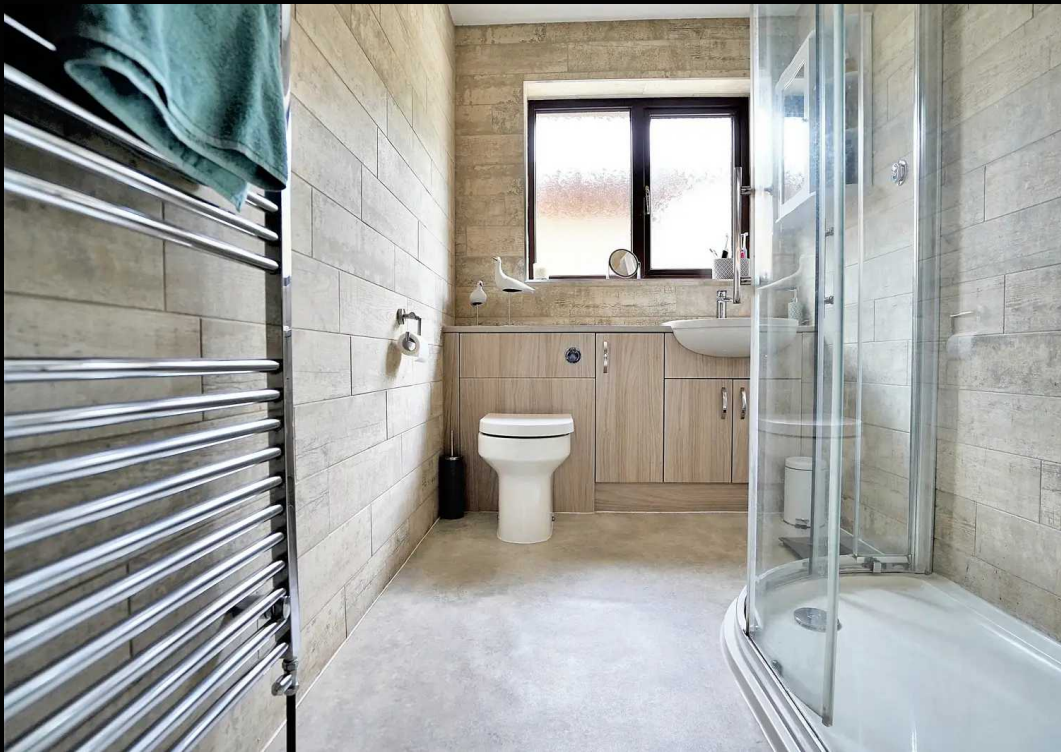
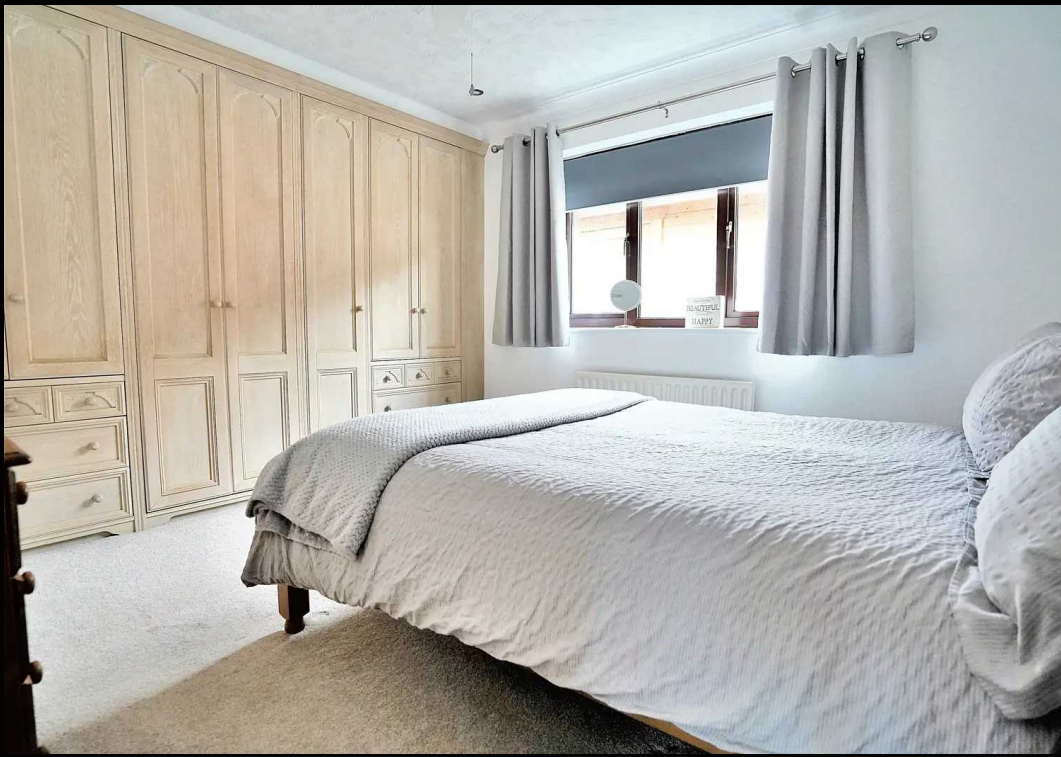


1 Southward House
Dibden Purlieu SO45 4PT

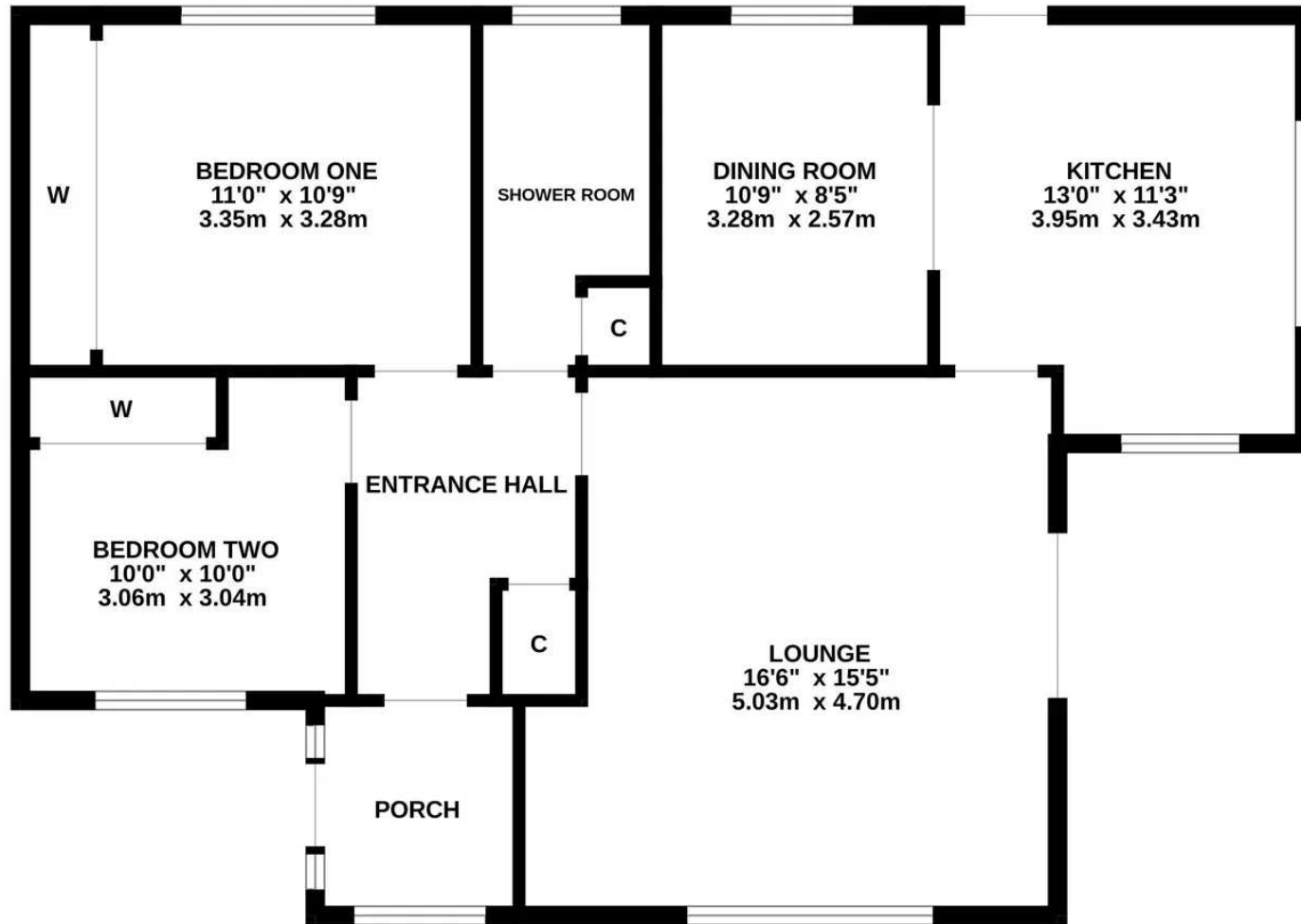


T: 02380 844405

info@anthonyjamesproperties.co.uk



GROUND FLOOR
896 sq.ft. (83.3 sq.m.) approx.



TOTAL FLOOR AREA : 896 sq.ft. (83.3 sq.m.) approx.

Whilst every attempt has been made to ensure the accuracy of the floorplan contained here, measurements of doors, windows, rooms and any other items are approximate and no responsibility is taken for any error, omission or mis-statement. This plan is for illustrative purposes only and should be used as such by any prospective purchaser. The services, systems and appliances shown have not been tested and no guarantee as to their operability or efficiency can be given.

Made with Metropix ©2023