



27 Bramley Road, Dereham

Guide Price £325,000

# 27 Bramley Road

Dereham, Dereham

Guide Price: £325,000 - £360,000. Discover contemporary elegance and functionality in this four-bedroom Dereham property. The ground floor seamlessly combines a dedicated study, inviting living spaces and a modern kitchen, complemented by a charming conservatory. Upstairs, four generously sized bedrooms, including a luxurious main bedroom with an ensuite, cater to diverse needs. The property's expansive rear garden and ample off-road parking complete the appeal, offering a perfect blend of indoor and outdoor living.

Tenure: Freehold





## 27 Bramley Road

Dereham, Dereham

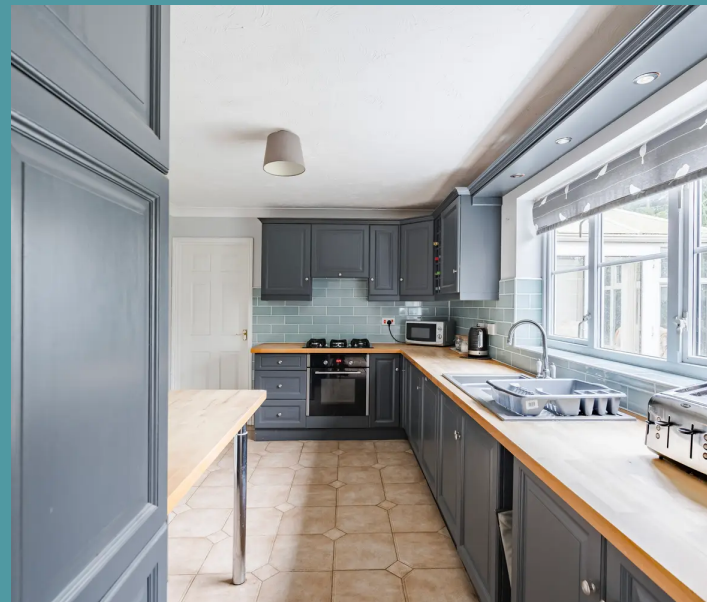
Guide Price: £325,000 - £360,000. Discover contemporary elegance and functionality in this four-bedroom Dereham property. The ground floor seamlessly combines a dedicated study, inviting living spaces and a modern kitchen, complemented by a charming conservatory. Upstairs, four generously sized bedrooms, including a luxurious main bedroom with an ensuite, cater to diverse needs. The property's expansive rear garden and ample off-road parking complete the appeal, offering a perfect blend of indoor and outdoor living.

### LOCATION

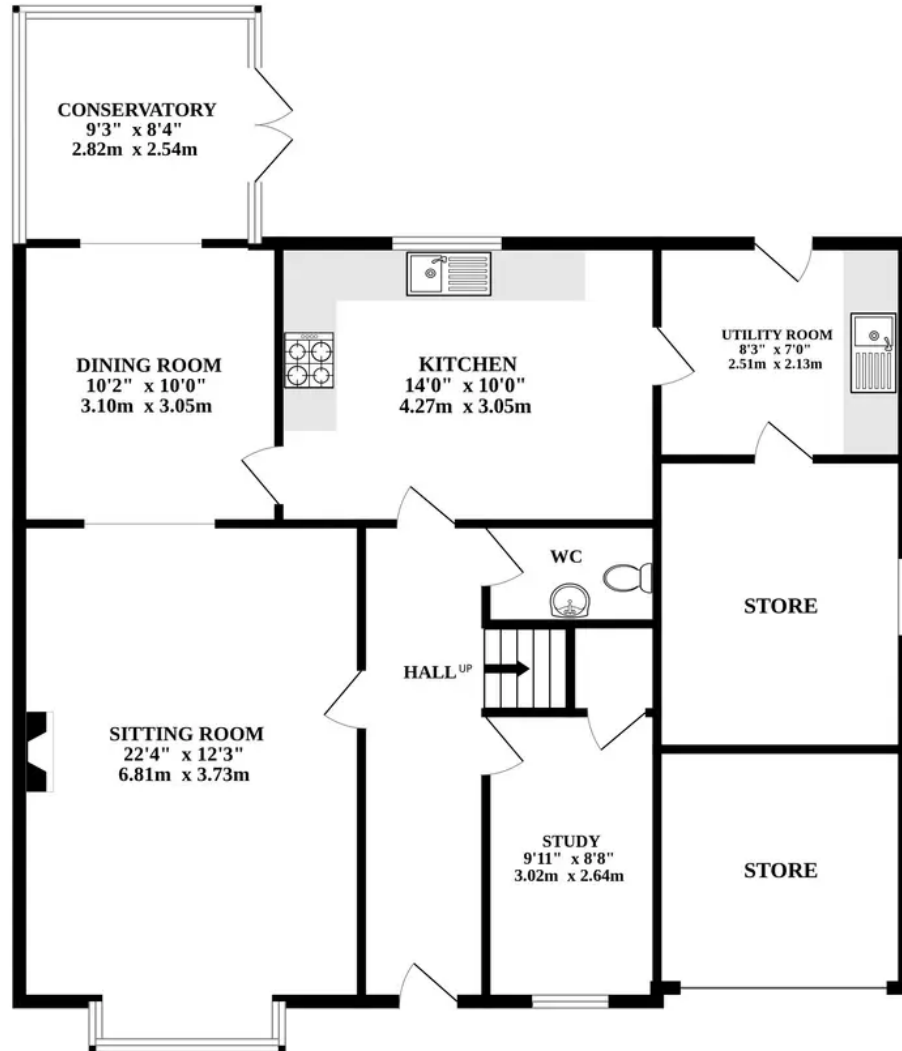
Within a short distance to the town centre and a country park, this property is in a great location within Dereham. There are supermarkets and a pub close by, as well as having more amenities within the town centre, including more shops, pharmacies, doctor's surgery, dentists, cinema, bowling alley and leisure centre, as well as pubs and restaurants, and schools for all ages. There is easy access to the A47, and is on the edge of the town giving it a quieter feel whilst having amenities on your doorstep.

### THE PROPERTY

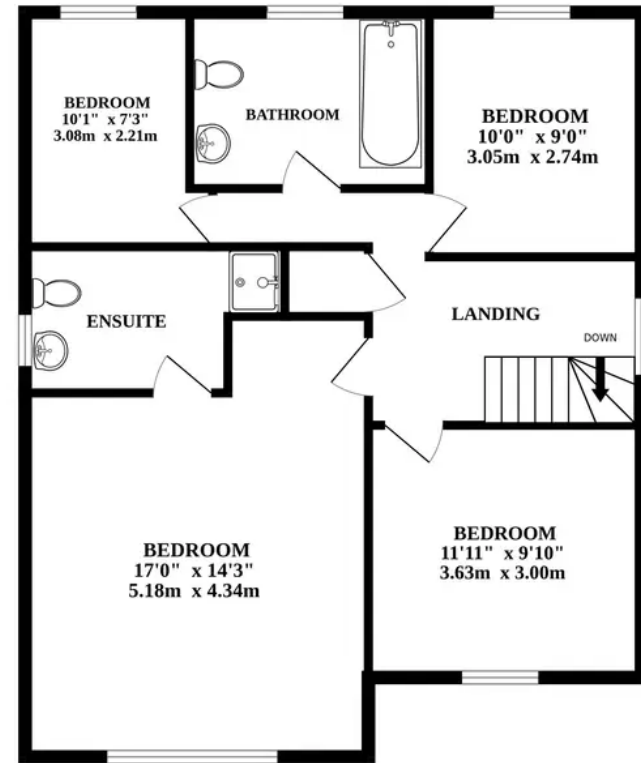
Welcome to this four-bedroom property in Dereham, offering a perfect combination of contemporary style and functional design. As you enter through the welcoming entrance hallway, you'll find convenient access to all ground-floor rooms. To your right is a dedicated study room, providing a versatile space ideal for those who



GROUND FLOOR



1ST FLOOR



Whilst every attempt has been made to ensure the accuracy of the floorplan contained here, measurements of doors, windows, rooms and any other items are approximate and no responsibility is taken for any error, omission or mis-statement. This plan is for illustrative purposes only and should be used as such by any prospective purchaser. The services, systems and appliances shown have not been tested and no guarantee as to their operability or efficiency can be given.  
 Made with Metropix ©2023