



Dene Road, Buckhurst Hill

Essex

Offers in Region of **£650,000**


CAPLEN
estates



3 Dene Road

Buckhurst Hill, Essex

Spacious 2-bed bungalow in Buckhurst Hill, Essex. Close to shops, restaurants, and transport links. Open-plan living/dining, conservatory, good-sized garden & off-street parking. Potential for extension. Requires redecoration. UPVC windows. Call 0203 937 7733 to arrange viewing.

Council Tax band: E

Tenure: Freehold

EPC Energy Efficiency Rating: C

EPC Environmental Impact Rating:

- Semi-Detached Bungalow
- Open-Plan Living and Dining Room
- Modern Kitchen
- Bright and Airy Conservatory
- Off-Street Parking For At Least Two Cars
- Good Sized Rear Garden
- Potential To Extend STPP



Lounge/Dining Room

Dimensions: 13' 11" x 18' 2" (4.24m x 5.53m).

Kitchen

Dimensions: 9' 3" x 11' 10" (2.82m x 3.60m).

Conservatory

Dimensions: 9' 7" x 11' 5" (2.92m x 3.48m).

Bedroom 1

Dimensions: 12' 7" x 9' 3" (3.83m x 2.82m).

Bedroom 2

Dimensions: 12' 1" x 9' 3" (3.68m x 2.82m).

Shower Room

Dimensions: 7' 7" x 6' 1" (2.31m x 1.85m).





GARDEN

65' 8" x 39' 6" (20.01m x 12.03m)

Good size rear garden with lawn, paved area and mature planting. There is also an external storage area.

GARAGE

Single Garage

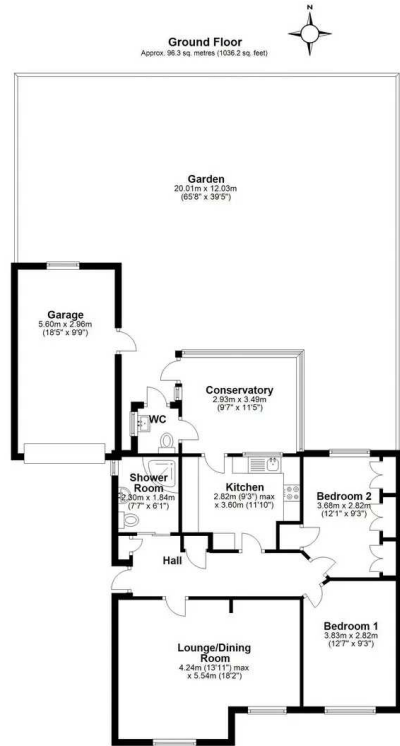
ON DRIVE

3 Parking Spaces

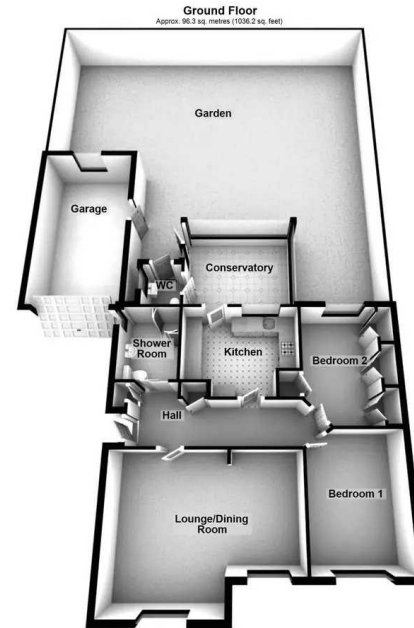
Parking on drive way for 2-3 cars







Total area: approx. 96.3 sq. metres (1036.2 sq. feet)



Total area: approx. 96.3 sq. metres (1036.2 sq. feet)

