



63 Honeywood Close, Hilsea

Portsmouth

Offers in Region of £250,000





63 Honeywood Close

Hilsea, Portsmouth

Tucked away in a quiet corner of this sought after development in Hilsea, we think this lovely two bedroom end terrace house would make a perfect first time purchase for someone. Located within walking distance to many local amenities including local shops, schools and parks so would make a great purchase for those of you looking to move into the area.

The entrance hall is light and bright and leads you through to a good size Lounge giving you plenty of space for today's modern furniture and ever larger sofa's! The Kitchen is also off the hallway and offers a range of wall and base cabinets with plenty of workspace too.

Our favourite feature of this home is the spiral staircase! It really gives it that stylish feel and works so well being tucked away in the corner of the Lounge. Next you'll see the large double glazed Sun Lounge which the current owner is using as a dedicated Dining Room. We love the space and light here and with access to the West facing garden this is a lovely place to spend time in.

On the first floor are two double Bedrooms and a modern fitted Shower Room. Both bedrooms are beautifully decorated with neutral colours so are ready to move straight into.

Outside is where this property really shines! You have an allocated parking space the side of the garden just a few steps from your side garden gate. There is also an additional lockable gate leading to the front of the house. The garden itself is West facing and offers a private space to relax in with shrub borders and a walled boundary.

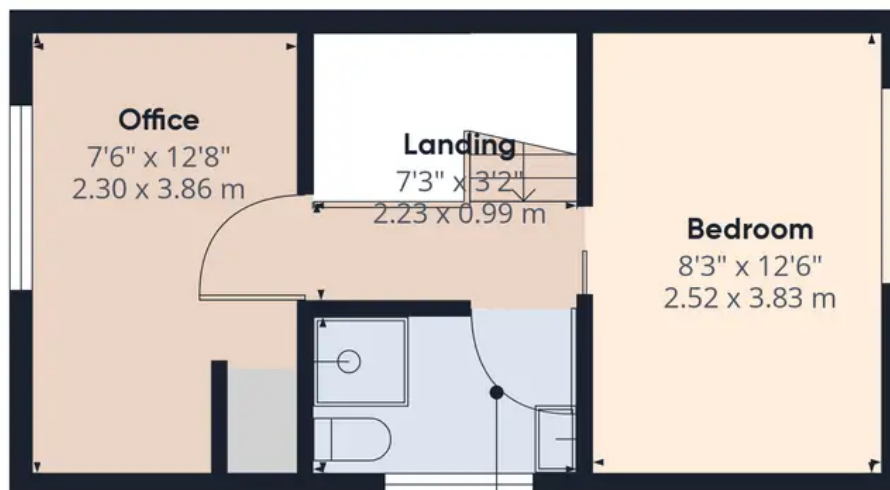
With no forward chain we think this is a wonderful place to live so do contact us to arrange a viewing.

Council Tax band: B Tenure: Freehold





Ground Floor



Bathroom

7'3" x 4'8"
2.22 x 1.45 m

Floor 1

Approximate total area⁰

700.67 ft²

65.09 m²

Reduced headroom

18.15 ft²

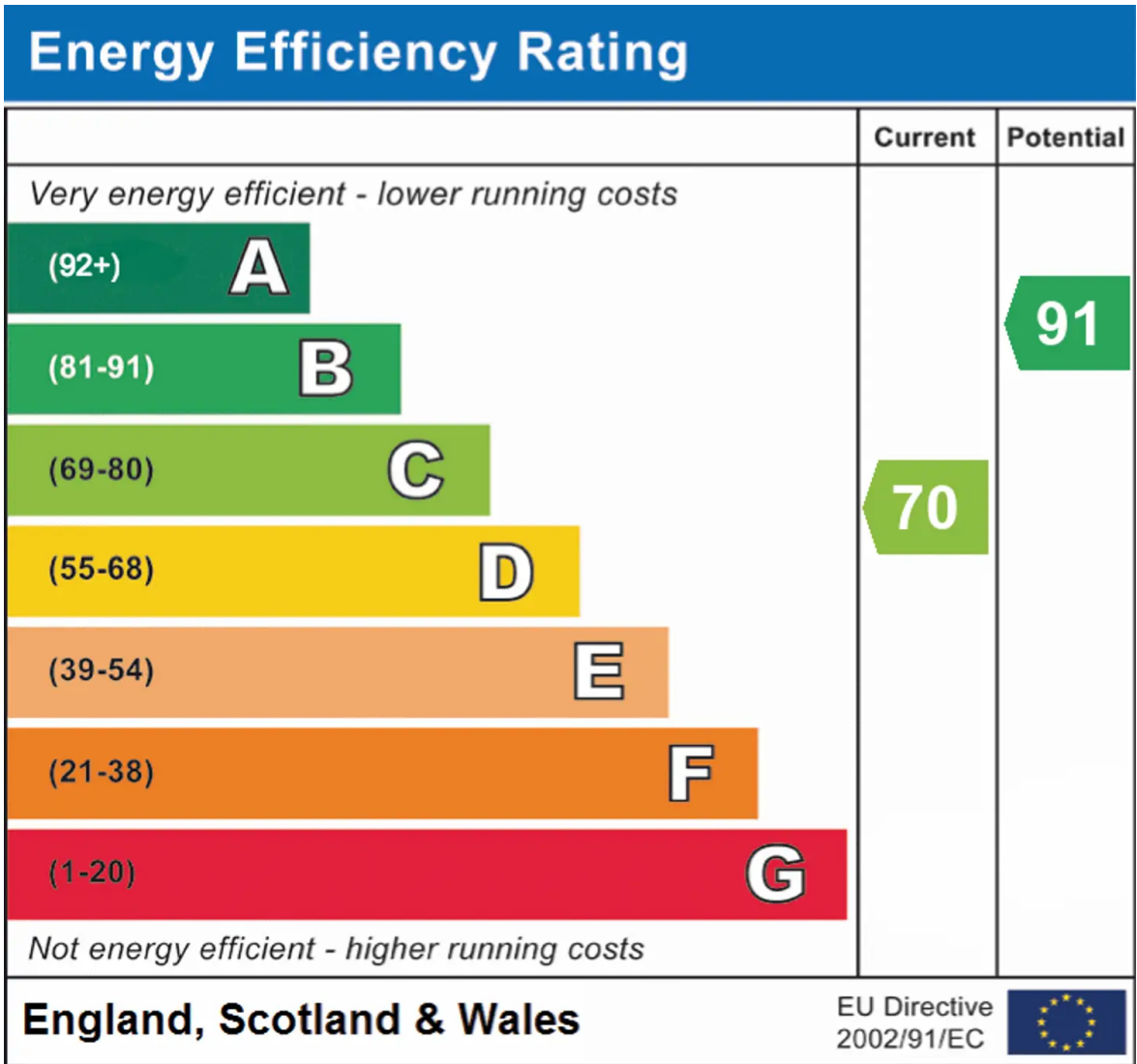
1.69 m²

Excluding balconies and terraces

Reduced headroom
(below 1.5m/4.92ft)

While every attempt has been made to ensure accuracy, all measurements are approximate, not to scale. This floor plan is for illustrative purposes only.

GIRAFFE360



Chinneck Shaw

Bridge House, Milton Road, Portsmouth – PO3 6AN

023 9282 6731

hello@chinneckshaw.co.uk

www.chinneckshaw.co.uk/

Chinneck Shaw, Bridge House, Milton Road, PO3 6AN Consumer Protection from Unfair Trading Regulations 2008: These details are for guidance only and complete accuracy cannot be guaranteed. If there is any point which is of particular importance, verification should be obtained. The do not constitute a contract or part of a contract. All measurements are approximate. No guarantee can be given with regard to planning permissions or fitness for purpose. No apparatus, equipment, fixture or fitting has been tested. Items shown in the photographs are NOT necessarily included. Interested Parties are advised to check availability and make an appointment to view before travelling to see a property.