

Love Homes



Orchard Way, Flitwick, Bedfordshire, MK45 1LF

Welcome to this tastefully transformed detached property, originally designed as a four-bedroom residence but now reconfigured into a spacious haven boasting three generously sized double bedrooms. The main bedroom enjoys built-in wardrobes and the luxury of an en-suite featuring an oversized shower for added comfort and convenience.

Orchard Way is a sought after road within a popular residential area conveniently close to Flitwick town centre, the train station and local schools. Access to open countryside over Flitwick Moor can be found just yards away making this ideal for families and dog walkers.



This property is presented by Duncan Stead - a Love Homes property expert with over 25 years' experience.

Find out more about this property by scanning the QR code.



0.6m



3



2



2

Tenure: Freehold

Council Tax: E





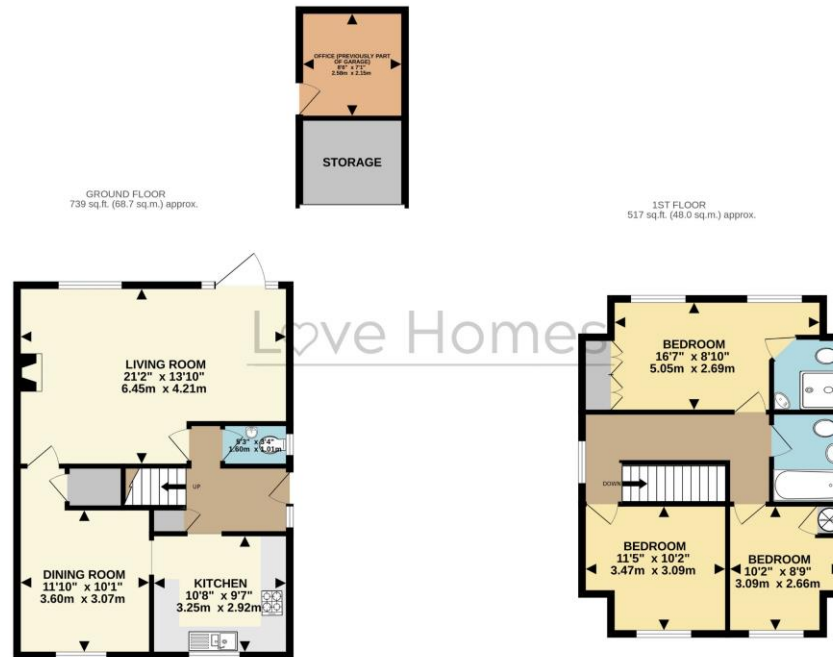


♥

"We decided to move to this house because we loved its chalet style and how light it is inside with the large windows. The private south-facing garden was very much a selling point for us too. We wanted to live somewhere close to the train station with a direct train to London, as well as being close to green places for family walks. There is a horse riding centre not too far and we've enjoyed walks to see the horses, as well as seeing them pass by our house in the warmer months. We've also really enjoyed that the house is on a quiet road, with limited traffic and always space to park our cars. It's also been amazing living within walking distance of a supermarket, good nurseries and schools, and a couple of coffee shops too."

♥





Score	Energy rating	Current	Potential
92+	A		
81-91	B		85 B
69-80	C		
55-68	D	59 D	
39-54	E		
21-38	F		
1-20	G		



These particulars are set out as a general outline in accordance with the Property Misdescriptions Act (1991) only for the guidance of intending purchasers or lessees, and do not constitute any part of an offer or contract. Details are given without any responsibility, and any intending purchasers, lessees or third parties should not rely on them as statements or representations of fact but must satisfy themselves by inspection or otherwise as to the correctness of each of them. We have not carried out a structural survey and the services, appliances and specific fittings have not been tested. All photographs, measurements, floor plans and distances referred to are given as a guide only and should not be relied upon for the purchase of carpets or any other fixtures or fittings. Gardens, roof terraces, balconies and communal gardens as well as tenure and lease details cannot have their accuracy guaranteed for intending purchasers. Lease details, service ground rent (where applicable) are given as a guide only and should be checked and confirmed by your solicitor prior to exchange of contracts. No person in the employment of Love Homes has any authority to make any representation or warranty whatever in relation to this property. Purchase prices, rents or other prices quoted are correct at the date of publication and, unless otherwise stated, are exclusive of VAT. We retain the copyright in all advertising material used to market this Property. All information is as advised by the seller and subject to change. Council tax bands can be subject to change by the local council.

5 The Russell Centre, Coniston Road, Flitwick, MK45 1QY  
Tel: 01525 713111

Email: [flitwick@lovehomes.uk](mailto:flitwick@lovehomes.uk)

[www.lovehomes.uk](http://www.lovehomes.uk)



**Love Homes**