



# The Garden Flat, Ravensdale Court, Harrogate

Harrogate

Guide Price £395,000



# MYRINGS

Harrogate's Family Estate Agent



## The Garden Flat

Ravensdale Court, Harrogate

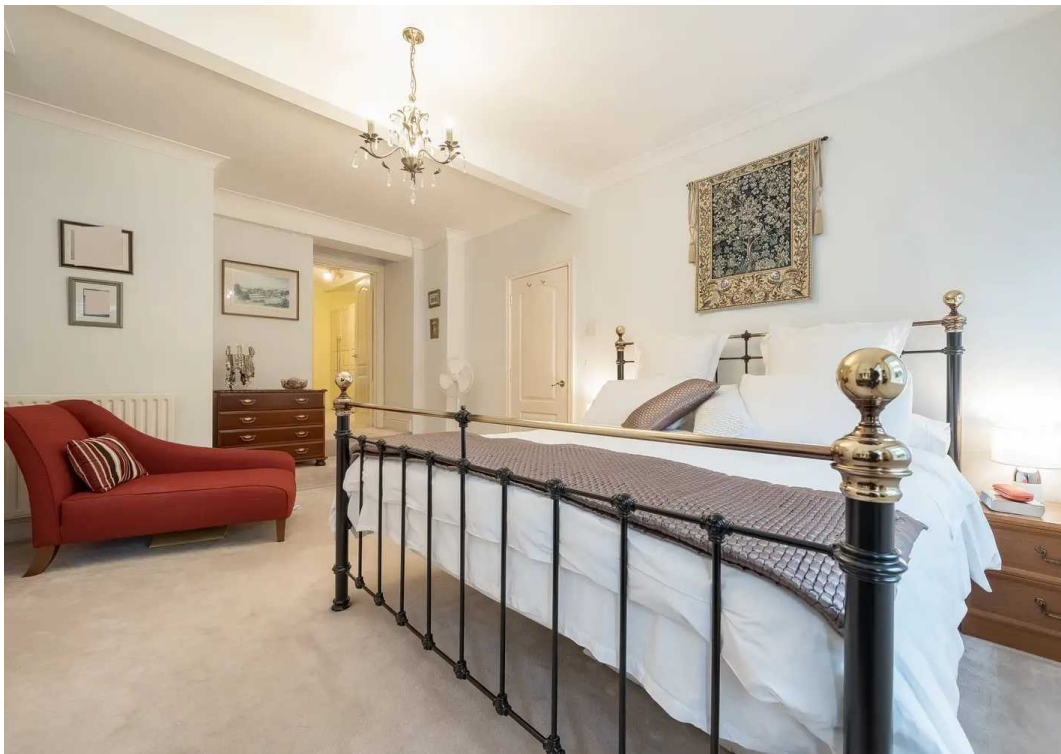
A rare opportunity to acquire an extremely spacious 2/3 bedroom ground level apartment in a Grade 2 listed period property within a short walk of the town centre yet in a quiet, secluded private location.

Tenure: Leasehold

- SPACIOUS 1822 SQ FT APARTMENT
- GOOD ORDER THROUGHOUT
- GENEROUS ROOM SIZES
- PRIVATE ENTRANCE
- PRIVATE REAR DECKED SUN TERRACE



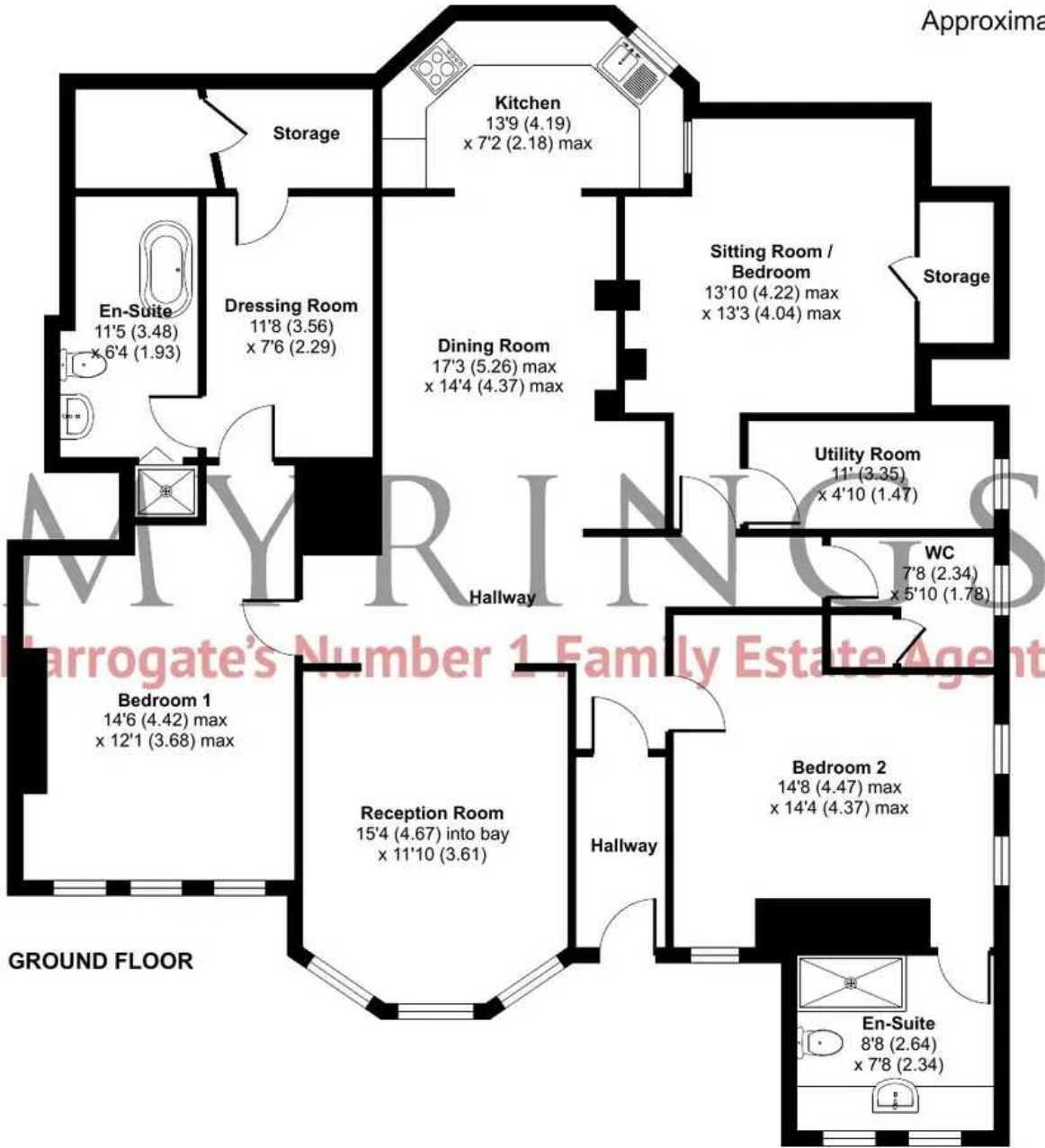
MYRINGS



# Spring Grove, Harrogate, HG1

Approximate Area = 1645 sq ft / 152.8 sq m

For identification only - Not to scale



GROUND FLOOR



Floor plan produced in accordance with RICS Property Measurement Standards incorporating International Property Measurement Standards (IPMS2 Residential). © nichecom 2023. Produced for Myrings. REF: 1068757





## Myrings Estate Agents

Myrings Estate Agents Ltd, 10 Princes Square - HG1 1LX

01423  
566400

• [enquiries@myringsestateagents.com](mailto:enquiries@myringsestateagents.com) • <http://myringsestateagents.com/>

