



41 Meon Road, Southsea

Offers in Region of £280,000

 chinneckshaw



41 Meon Road

Southsea

We are delighted to be marketing this project house located in the sought-after residential area of Milton. Local amenities are available just minutes away with recreational facilities also close at hand. This area is perfect for all ages and gives you that real 'village feel' within the City.

The house has been a much-loved family home and some 20 years ago was subject to a Local Authority Grant which gave it, at that time, new double glazing, a rewire, loft insulation and central heating. The house also benefits from some original features and we think would make someone a lovely family home whether you retain those features or perhaps design a completely modern contemporary interior could be created. Entering the home, the front reception is to the left and has a bay window to the front aspect. The kitchen and dining room come next and are located next to each other so we think could be made into one open plan design space! That said we love the current layout which gives you so much scope to make this house your home.

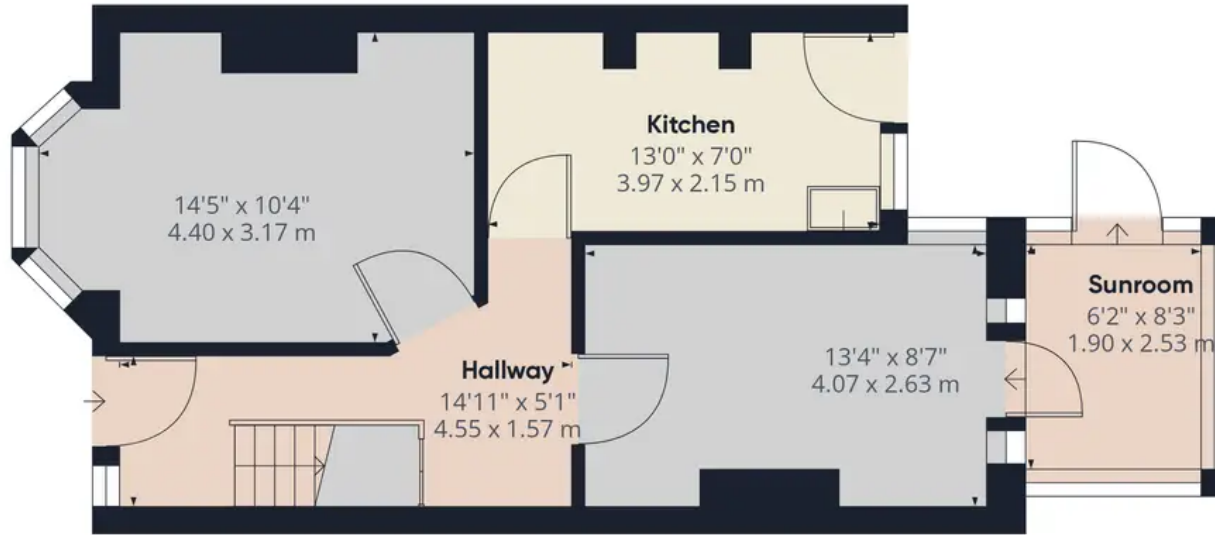
Upstairs you'll find a nice shape landing with three bedrooms all of which are a good size together with a large bathroom. Outside the rear garden is a good size with fence boundaries is laid to patio.

A great opportunity to upgrade and create the ideal family home in a lovely area of the city.

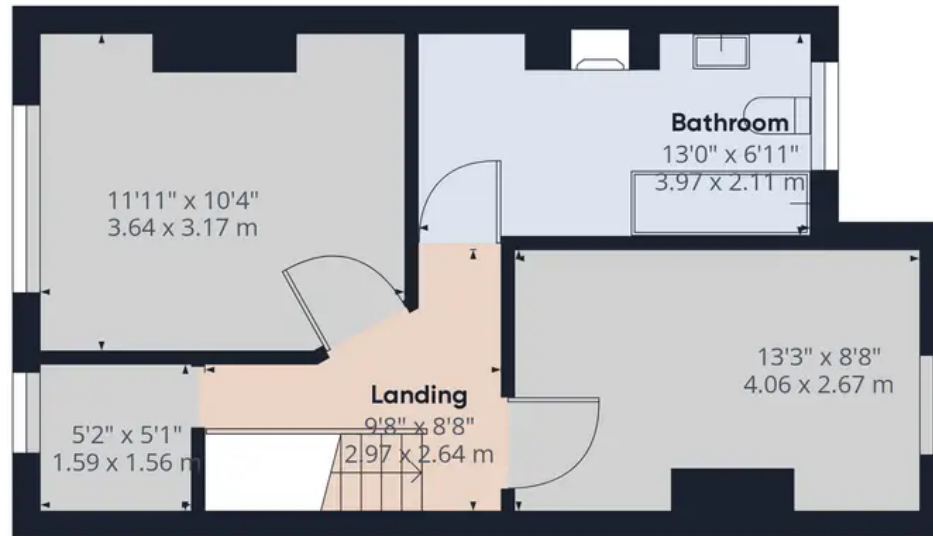
Council Tax band: C

Tenure: Freehold





Ground Floor



Floor 1

Approximate total area¹⁾

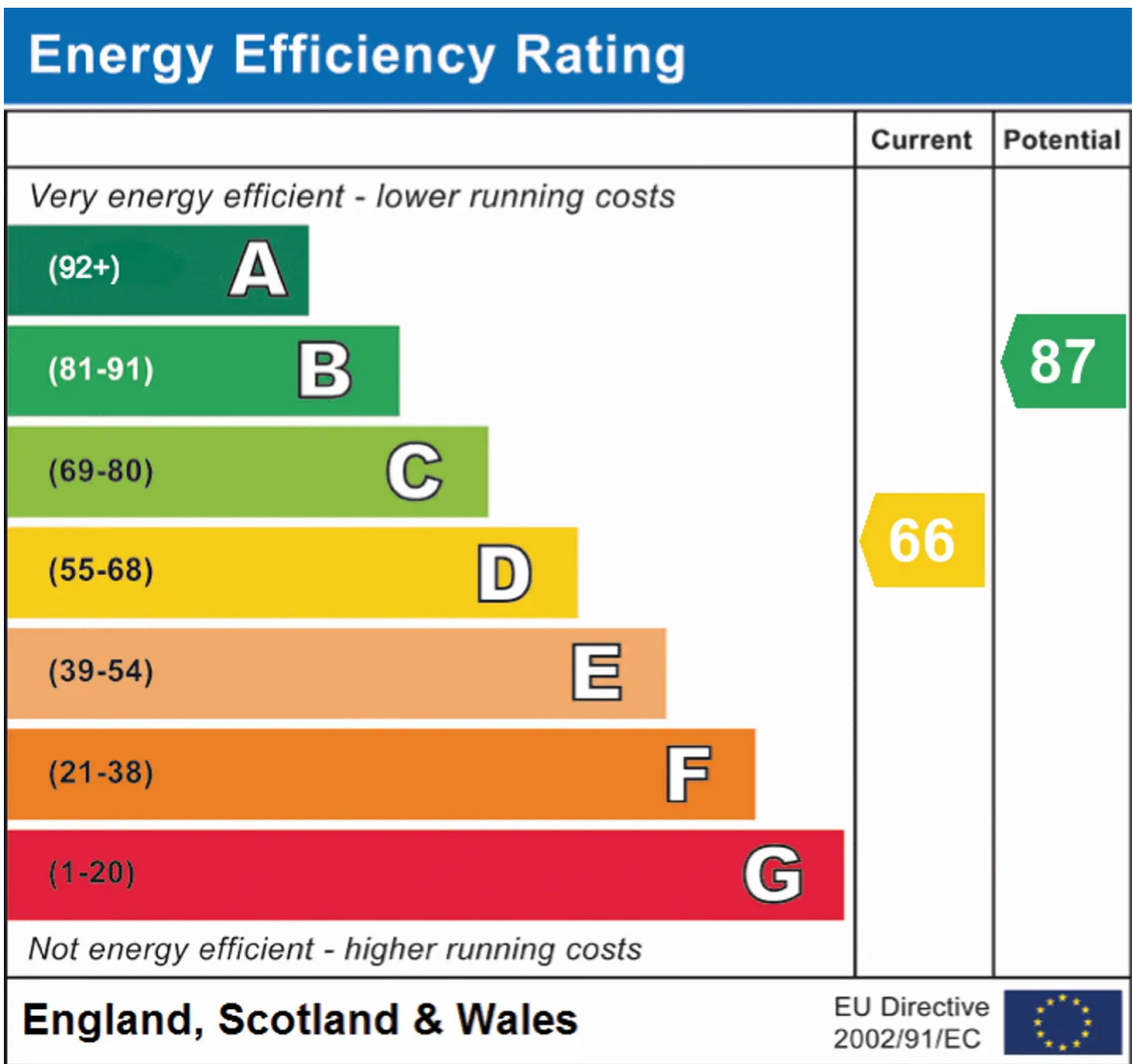
878.66 ft²

81.63 m²

Excluding balconies and terraces

While every attempt has been made to ensure accuracy, all measurements are approximate, not to scale. This floor plan is for illustrative purposes only.

GIRAFFE360



Chinneck Shaw

Bridge House, Milton Road, Portsmouth – PO3 6AN

023 9282 6731

hello@chinneckshaw.co.uk

www.chinneckshaw.co.uk/

Chinneck Shaw, Bridge House, Milton Road, PO3 6AN Consumer Protection from Unfair Trading Regulations 2008: These details are for guidance only and complete accuracy cannot be guaranteed. If there is any point which is of particular importance, verification should be obtained. The do not constitute a contract or part of a contract. All measurements are approximate. No guarantee can be given with regard to planning permissions or fitness for purpose. No apparatus, equipment, fixture or fitting has been tested. Items shown in the photographs are NOT necessarily included. Interested Parties are advised to check availability and make an appointment to view before travelling to see a property.