




Andrew Pearce
PINNER

OXLEAY ROAD, HARROW, HA2 9UY **£330,000**



A two double bedroom, two bathroom, split level flat, with the accommodation arranged over the first and second floors. The property occupies a pleasant location on a quiet road just moments from Rayners lane shopping and transport facilities.

The property features a well planned interior layout, with spacious living areas and generous bedroom sizes. The accommodation comprises:

Communal main entrance with front door and staircase to the first floor hallway, leading through to a good size living room with a front aspect bay window.

Further off the hallway to the rear is the fitted kitchen, which features a range of units. The rear aspect bedroom is a large double room and the main bathroom, consisting of a white three piece suite with a corner bath, neatly finished with tiled walls and flooring, completes the first floor layout.

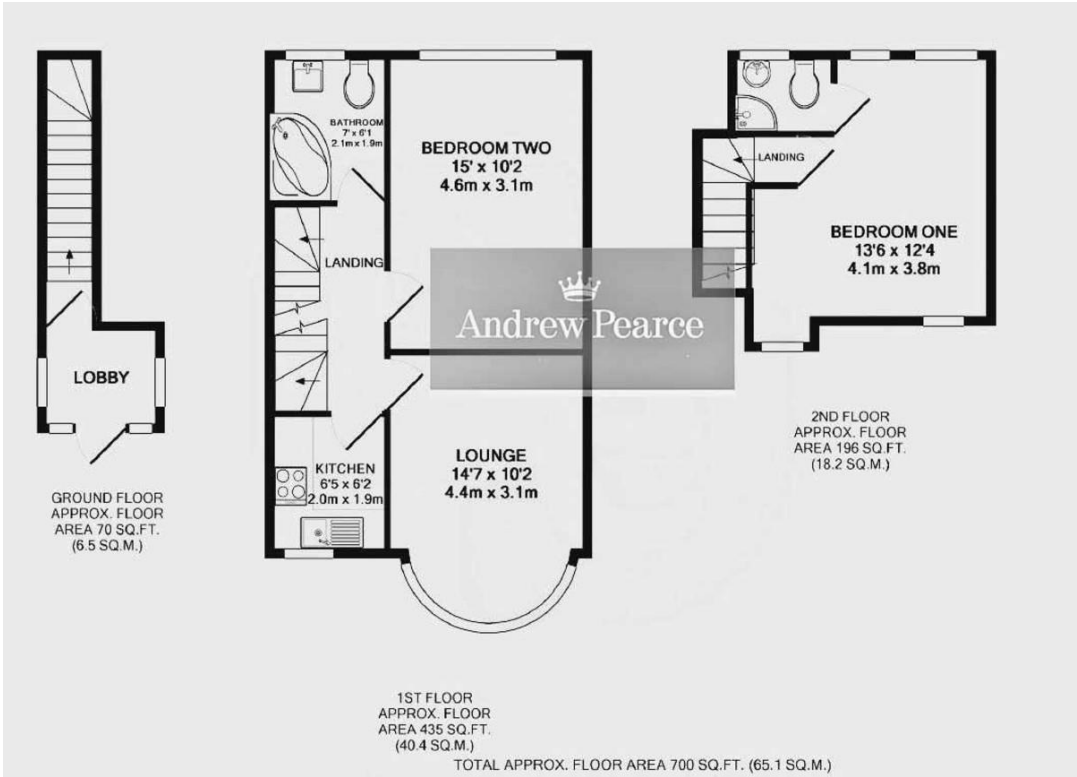
A further staircase leads up to the second floor, which accommodates a further double bedroom with a modern en-suite shower room.

Oxley Road is just off Alexandra Avenue and the property is a very convenient 5-7 minute walk to Rayners Lane Metropolitan / Piccadilly line station and High Street shops and restaurants are within 2-5 minutes' walk.

Local schools include Newton Farm and Roxbourne Primaries, Rooks Heath College and Whitmore High.

Chain free sale.

Tenure : 900 plus year lease with a share of freehold





Score	Energy rating	Current	Potential
92+	A		
81-91	B		
69-80	C	71 C	74 C
55-68	D		
39-54	E		
21-38	F		
1-20	G		