



LYMINGTON GATE

HAMPSHIRE

Putting
later living
on the map





Discover *Lymington Gate*, a lovingly curated collection of one and two bedroom apartments located on the edge of the *New Forest*. Exclusively for those enjoying life over 60.

Warm summers, mild winters. Open green spaces, fresh sea air. A corner of Hampshire brimming with history, colour and character. For most people, Lymington is a destination - a place to cherish for a few short days away. For the lucky few, it is a place to live all year round. A special place - like Lymington Gate - to call home.



Putting harbour life on the map



There's nowhere quite like Lymington, with its picture-perfect blend of lobster pots and fishing boats, boutiques and market stalls, cobbled streets and café culture, smuggling heritage and community spirit. Lymington Gate is what its name suggests: a gateway to all that this picturesque Georgian harbour town has to offer.

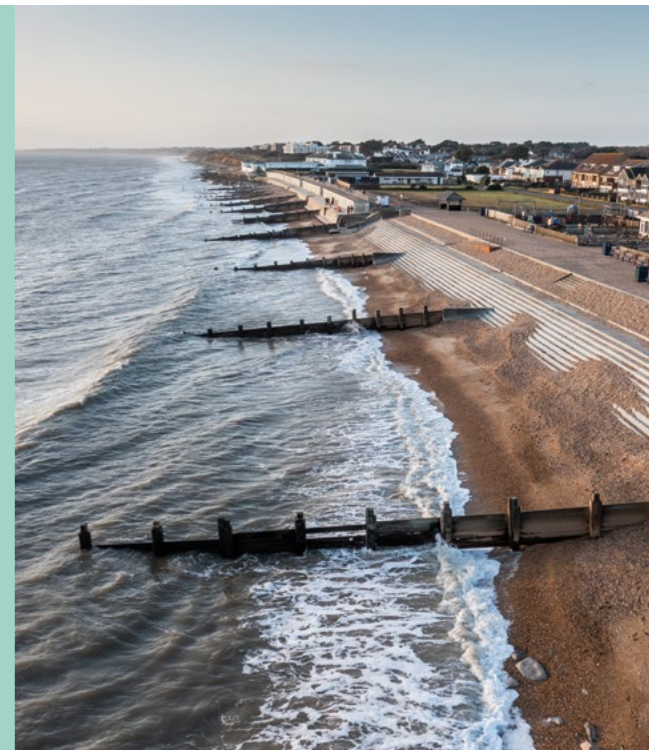




Putting coastal adventure on the map

Lymington Gate sits on the threshold of some of the most beautiful and varied countryside that Britain has to offer. Head inland and you have the natural wonder of the New Forest. Walk along the Solent Way coastal path and you have the rich birdlife of Keyhaven Marshes and the beachfront of Milford on Sea. And then there's Hurst Castle, the mighty fortress built by Henry VIII, with its dramatic views of the world-famous Needles.

Or why not join the thriving local boating community? After all, the town boasts the world-famous Royal Lymington Yacht Club, home to a vibrant scene of social and competitive yachting, dinghy sailing and motor boating. Alternatively, hop on a ferry from Lymington Pier and you can be exploring the Isle of Wight in just 40 minutes.



Putting local culture on the map



From national chains to a fabulous selection of chichi boutiques and quirky independent traders, the picturesque streets and lanes of Lymington are a shopper's paradise. The town is also characterised by its rich community of art lovers served by a plethora of galleries and studios, and by the many artists drawn here by the crystal-clear quality of the coastal light.



CLARENDON
FINE ART

ART THAT SPEAKS
YOUR LANGUAGE

Lymington at a glance

TOWN CENTRE

Just a 5-10 minute walk from Lymington Gate, the beautiful Georgian town centre plays host every week to the artisanal stalls of the famous Charter Market.

MOUTHWATERING MENUS

There's something to suit every palate in Lymington, whether it's a spot of tapas at Lounges, some hearty pub food at The Ship Inn, or fine dining at the Modern British, Elderflower.

GROCERY SHOPPING

For your everyday needs, take your pick from the Waitrose and M&S Foodhall that lie less than a five-minute walk away.

CULTURAL BUZZ

Enjoy cinema nights at The Malt, summer jazz at The Gates Hall as well as a year-round cultural offerings of the St Barbe Museum and Art Gallery.

TASTY TREATS

Sample the delights of one of Lymington's myriad of cafés, from the cosy quayside comfort of Coffee and Drift to the ever popular cinnamon buns of Hoxton Bakehouse.

MARITIME FLAVOUR

There's something good for the soul about the sights, sounds and smells of life by the sea. Just a stroll along the quayside can be enough to get the blood pumping.



Lymington on foot

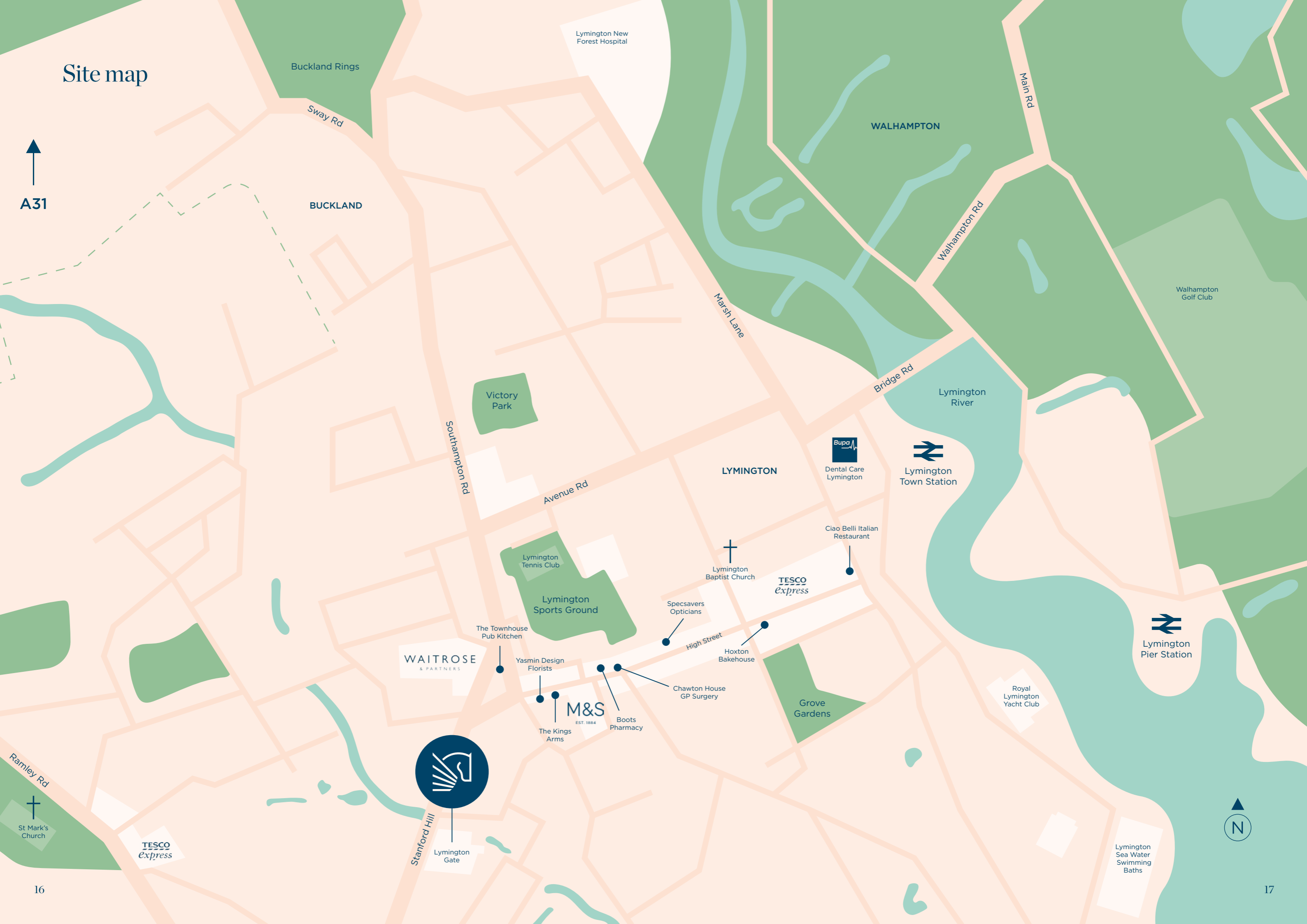
The streets of Lymington play host to a plethora of independent retailers and restaurants, including the delectable Ciao Belli and the sociable Hoxton Bakehouse.

Waitrose	3 mins
Yasmin Design Florists	3 mins
The Kings Arms	4 mins
The Townhouse Pub Kitchen	4 mins
Chawton House GP Surgery	5 mins
Marks & Spencer	5 mins
Boots Pharmacy	5 mins
Specsavers Opticians	7 mins
Hoxton Bakehouse	9 mins
Lymington Baptist Church	10 mins
Ciao Belli Italian Restaurant	13 mins
Lymington Train Station	15 mins

Travel times are approximate and are taken from [google.com/maps](https://www.google.com/maps)



Site map



Buckland Rings

Lymington New Forest Hospital

WALHAMPTON

BUCKLAND

Walhampton Golf Club

Victory Park

Lymington River

LYMINGTON

Lymington Town Station

Lymington Tennis Club

Lymington Sports Ground

Lymington Baptist Church

TESCO Express

Ciao Belli Italian Restaurant

The Townhouse Pub Kitchen

WAITROSE & PARTNERS

Yasmin Design Florists

Specsavers Opticians

Hoxton Bakehouse

Chawton House GP Surgery

Grove Gardens

Lymington Pier Station

Royal Lymington Yacht Club

M&S EST. 1884

Boots Pharmacy

The Kings Arms



Stanford Hill

Lymington Gate

Lymington Sea Water Swimming Baths



TESCO Express

St Mark's Church

Ramley Rd



TRANQUIL
RESIDENCES



Your gateway to comfort

Designed by the multi-award-winning David James Architects, Lymington Gate takes its inspiration from the stately world of Georgian England, when the town of Lymington began to take on its current picturesque state.

Purpose-built for later living, it is a place that values your independence, privacy, comfort and convenience, while also fostering a welcome sense of community.

At its heart is a light-filled communal lounge and kitchen, which opens out onto a shared garden terrace. Beyond that lies an artfully landscaped garden – a verdant treasure trove of winding pathways, fragrant shrubs, and spots to sit and enjoy the mild south coast climate.

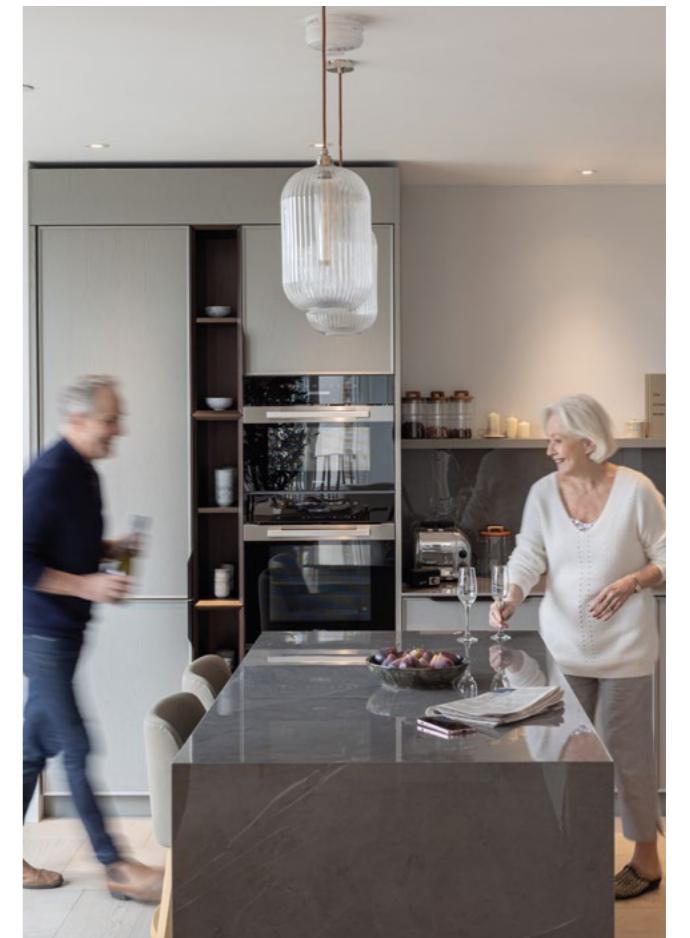


Your gateway to possibility



Lymington Gate is a place where time and possibility opens up - not least because so many of the everyday headaches of life are taken care of. Comfortable, well-maintained and secure, the property also benefits from the presence of a dedicated Lifehost, ready to greet you with a warm smile, a friendly word and a bit of practical support - as well as organising a regular calendar of social events.





A day lived at Lymington Gate is a day filled with light, fresh air and colour, and the promise of companionable moments. A morning cup of tea with neighbours on the shared garden terrace. A convivial cheese and wine evening in the communal lounge. A quiet chat in the dappled seclusion of the landscaped garden.

Your gateway to style

Each of the homes at Lymington Gate comes bathed in light, warmth and peace, thanks to a deliberately generous provision of triple-layered glazing. Almost all of them also come with their own private outdoor space – either a patio at ground-floor level or a balcony higher up.

Inside, all is timeless style, quality and comfort – from the thick Cormar carpeting of the bedrooms to the solid Silestone worktops in the kitchen, where gleaming new Neff, Bosch and Fisher & Paykel appliances come fully fitted.

With their clean lines and bright palette, these are spaces ready for you to fill with all the unique colour of your life. Spaces ready to be called home.



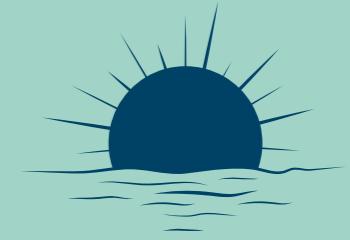


Key features



HARBOUR LIFE

Conveniently placed a short stroll from the independent shops, cobbled streets and yachts of Lymington Quay.



WELLBEING

Place wellbeing at the heart of homelife with facilities designed to embrace a sociable, independent lifestyle.



GUEST SUITE

Indulge family and friends by inviting them to stay over in the exclusive guest suite at Lymington Gate.



COMMUNAL LOUNGE

Relax or meet with friends in the stylish communal lounge.



LANDSCAPED GARDENS

Unwind as you connect with nature and the outdoors in the beautifully landscaped gardens.



LIFEHOSTS

Get to know our Lifehost and take comfort that the important details of life are taken care of by someone you trust.



FLOORPLANS

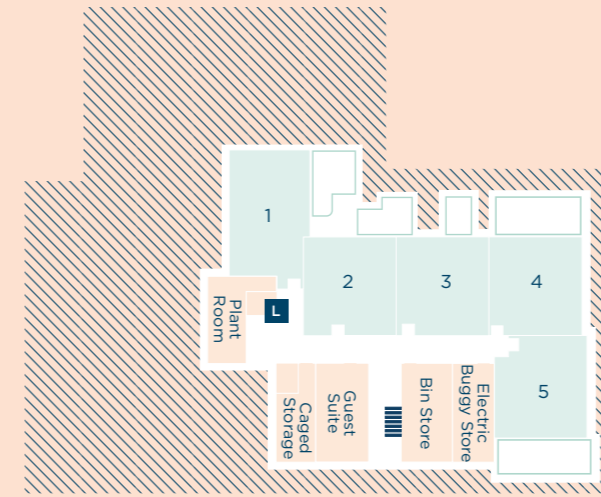
Site Map

- Apartments
- Balconies
- Communal & Facility Areas
- Terraces & Patios
- Stairs
- Lifts



Floorplates

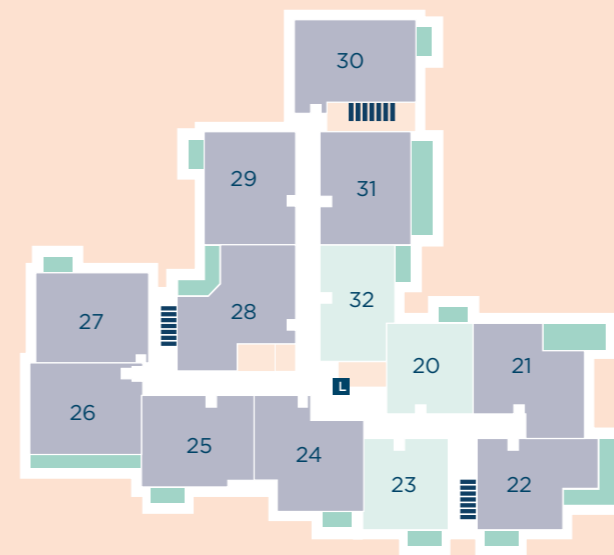
- 1 Bedroom Apartments
- 2 Bedroom Apartments
- Communal & Facility Areas
- Balconies
- Terraces



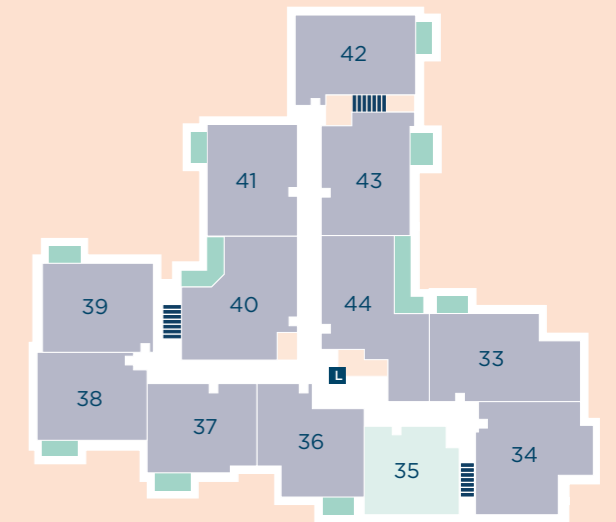
Lower Ground Floor



Ground Floor



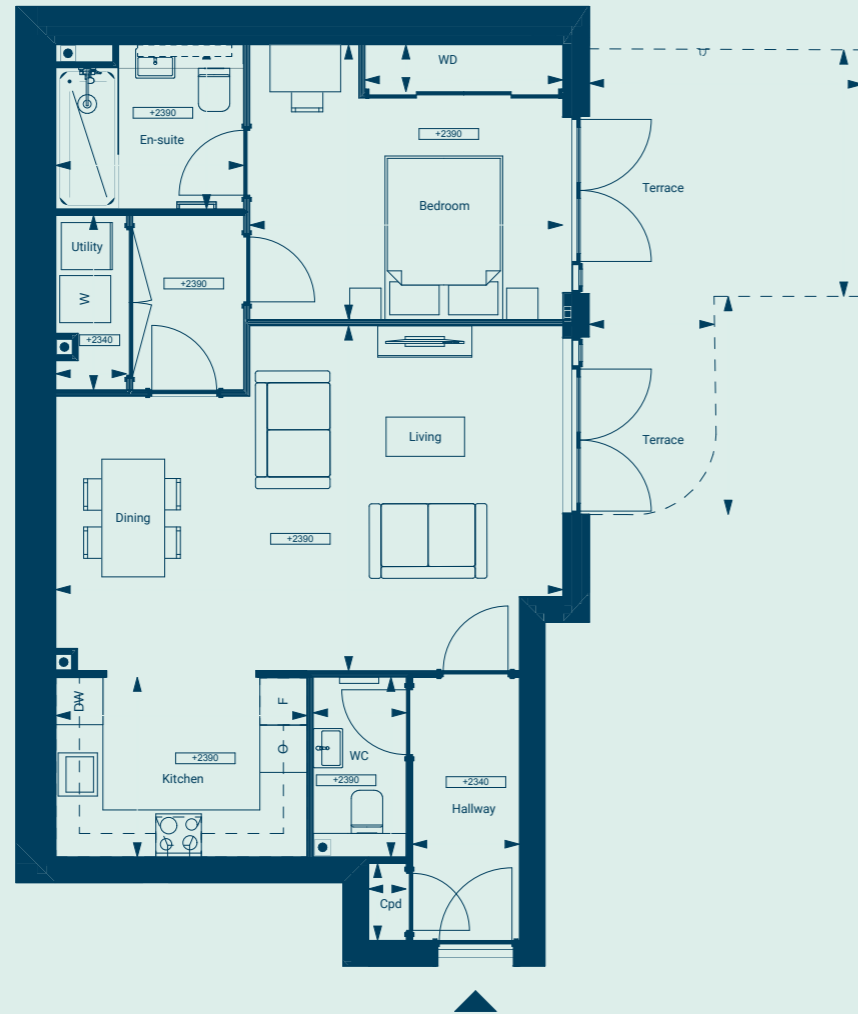
First Floor



Second Floor

Apartment 1

1 Bedroom
Lower Ground Floor



Dimensions

Living/Dining Room	14ft 4in x 21ft 2in	4.39m x 6.46m
Kitchen	7ft 6 in x 10ft 5in	2.29m x 3.20m
Bedroom	11ft 5in x 13ft 0in	3.50m x 3.98m
En-Suite	6ft 10in x 7ft x 10in	2.09m x 2.39m
WC	7ft 6in x 3ft 10in	2.29m x 1.18m
Terrace*	162 Sq Ft	15.1m ²
Total Area	730 sq ft	67.9m²

*Not included in Total Area

Location



Apartment 2

1 Bedroom
Lower Ground Floor

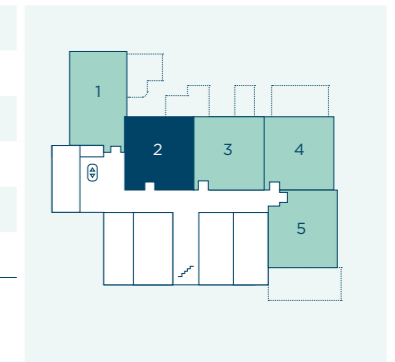


Dimensions

Living/Dining Room	16ft 11in x 12ft 4in	5.16m x 3.77m
Kitchen	8ft 11in x 8ft 10in	2.74m x 2.70m
Bedroom	12ft 8in x 11ft 8in	3.87m x 3.57m
En-Suite	7ft 10in x 6ft 10in	2.39m x 2.09m
WC	3ft 2in x 5ft 6in	0.97m x 1.68m
Terrace*	200 sq ft	18.6m ²
Total Area	653 sq ft	60.7m²

*Not included in Total Area

Location



Apartment 3

1 Bedroom
Lower Ground Floor

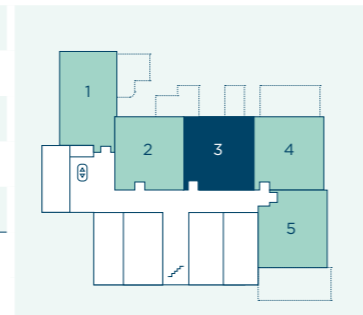


Dimensions

Living/Dining Room	16ft 11in x 12ft 6in	5.16m x 3.82m
Kitchen	8ft 11in x 8ft 10in	2.74m x 2.70m
Bedroom	12ft 6in x 11ft 9in	3.83m x 3.59m
Shower Room	7ft 10in x 6ft 10in	2.39m x 2.09m
Terrace*	103 sq ft	9.6m ²
Total Area	651 sq ft	60.5m²

*Not included in Total Area

Location



Apartment 4

1 Bedroom
Lower Ground Floor

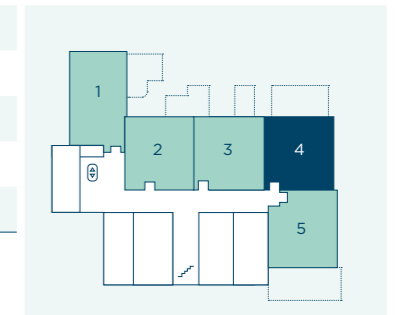


Dimensions

Living/Dining Room	16ft 9in x 12ft 6in	5.11m x 3.82m
Kitchen	8ft 11in x 8ft 10in	2.74m x 2.70m
Bedroom	12ft 6in x 11ft 9in	3.83m x 3.59m
Shower Room	7ft 10in x 6ft 10in	2.39m x 2.09m
Terrace*	278 sq ft	25.9m ²
Total Area	652 sq ft	60.6m²

*Not included in Total Area

Location



Apartment 5

1 Bedroom
Lower Ground Floor



Dimensions

Living/Dining Room	17ft 11in	5.48m x 3.80m
Kitchen	8ft 11in x 8ft 10in	2.74m x 2.70m
Bedroom	14ft 2in x 11ft 8in	4.34m x 3.57m
Shower Room	6ft 10in x 7ft 6in	2.09m x 2.29m
Terrace*	284 sq ft	26.4m ²
Total Area	652 sq ft	60.6m²

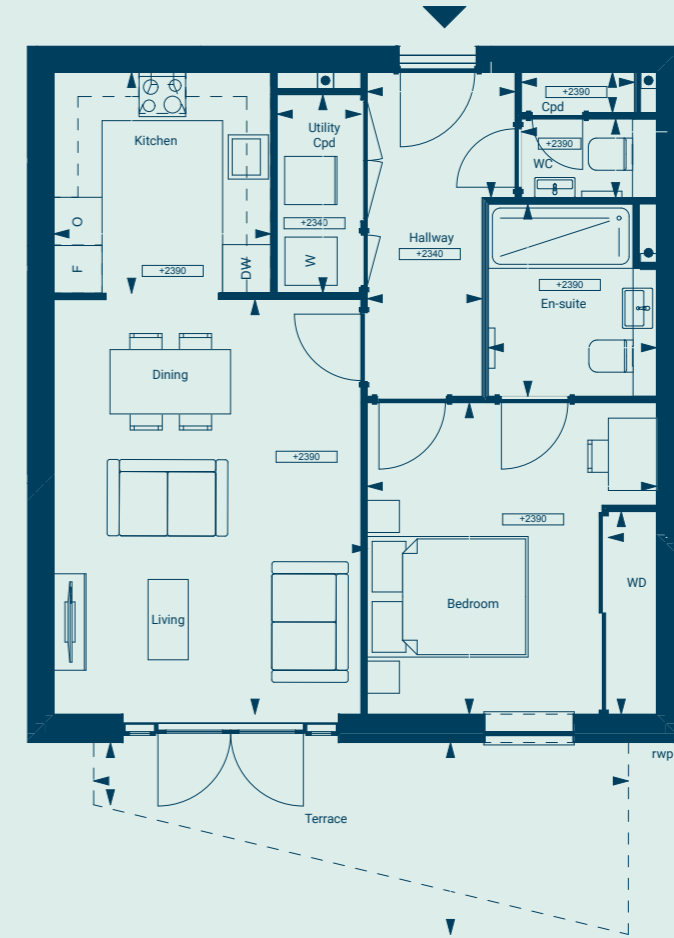
*Not included in Total Area

Location



Apartment 6

1 Bedroom
Ground Floor



Dimensions

Living/Dining Room	16ft 10in x 12ft 6in	5.15m x 3.82m
Kitchen	8ft 11in x 8ft 10in	2.74m x 2.70m
Bedroom	12ft 8in x 11ft 9in	3.87m x 3.6m
En-Suite	7ft 10in x 6ft 10in	2.39m x 2.09m
WC	3ft 2in x 5ft 6in	0.97m x 1.68m
Terrace*	77 sq ft	7.2m ²
Total Area	652 sq ft	60.6m²

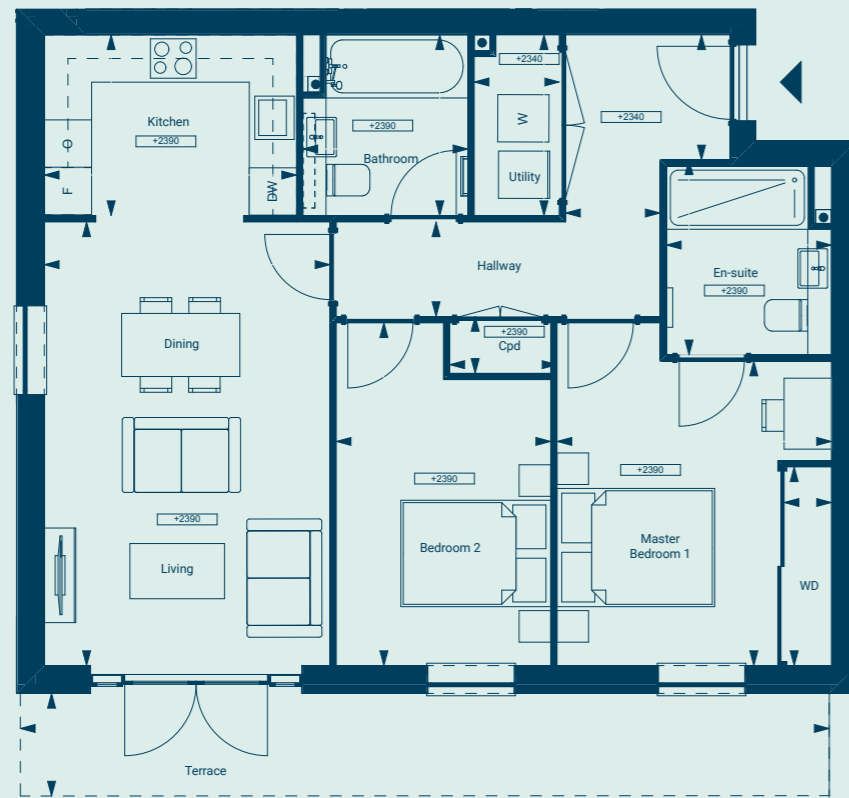
*Not included in Total Area

Location



Apartment 7

2 Bedrooms
Ground Floor



Dimensions

Living/Dining Room	18ft 5in x 11ft 10in	5.62m x 3.62m
Kitchen	7ft 6in x 10ft 5in	2.29m x 3.20m
Bedroom	12ft 7in x 11ft 5in	3.86m x 3.48m
Bedroom 2	14ft 2in x 8ft 11in	4.34m x 2.72m
Shower Room	7ft 6in x 6ft 10in	2.29m x 2.09m
En-Suite	7ft 10in x 6ft 10in	2.39m x 2.09m
Terrace*	76 sq ft	7.1m ²
Total Area	844 sq ft	78.5m²

*Not included in Total Area

Location



Apartment 8

2 Bedrooms
Ground Floor



Dimensions

Living/Dining Room	18ft 4in x 11ft 10in	5.61m x 3.61m
Kitchen	7ft 6in x 10ft 5in	2.29m x 3.20m
Bedroom	13ft 2in x 9ft 1in	4.03m x 2.77m
Bedroom 2	14ft 2in x 8ft 10in	4.33m x 2.71m
Shower Room	8ft 6in x 6ft 10in	2.61m x 2.09m
En-Suite	7ft 10in x 6ft 10in	2.39m x 2.09m
Terrace*	57 sq ft	5.3m ²
Total Area	860 sq ft	79.9m²

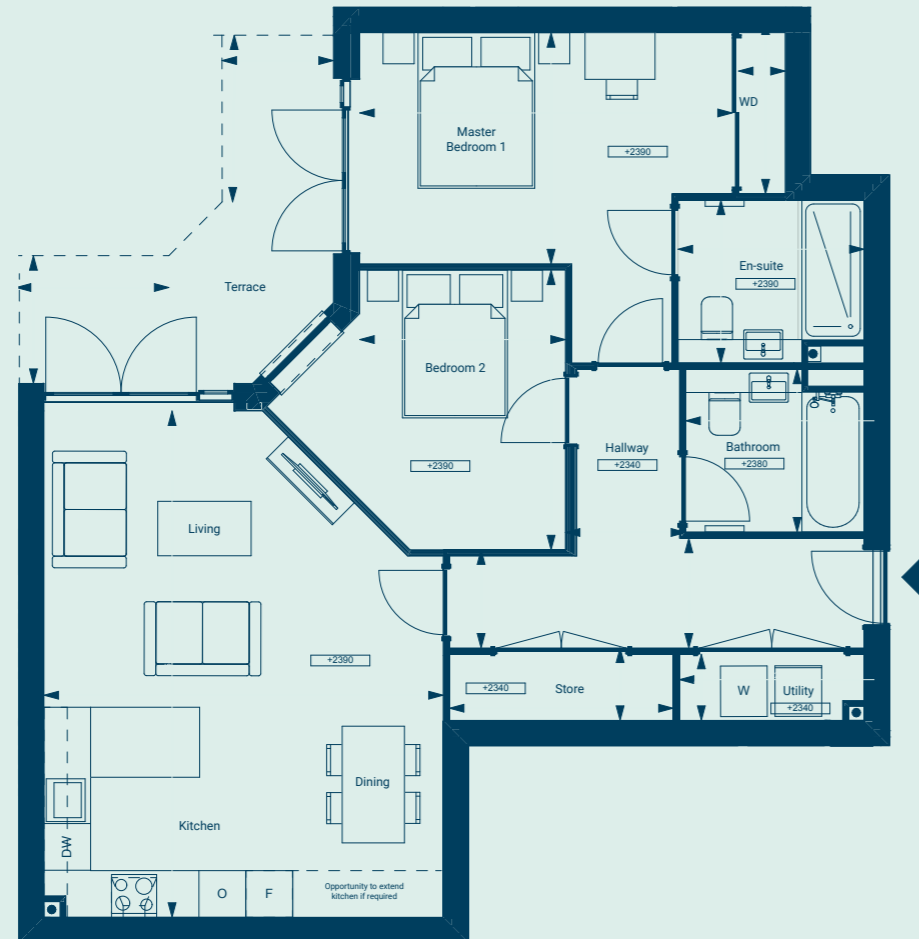
*Not included in Total Area

Location



Apartment 9

2 Bedrooms
Ground Floor



Dimensions

Kitchen/Living/Dining Room	21ft 3in x 16ft 9in	6.50m x 5.13m
Bedroom	9ft 8in x 15ft 8in	2.97m x 4.78m
Bedroom 2	11ft 9in x 8ft 7in	3.59m x 2.64m
Shower Room	6ft 10in x 7ft 6in	2.09m x 2.29m
En-Suite	6ft 10in x 7ft 10in	2.09m x 2.39m
Terrace*	111 sq ft	10.4m ²
Total Area	922 sq ft	85.7m²

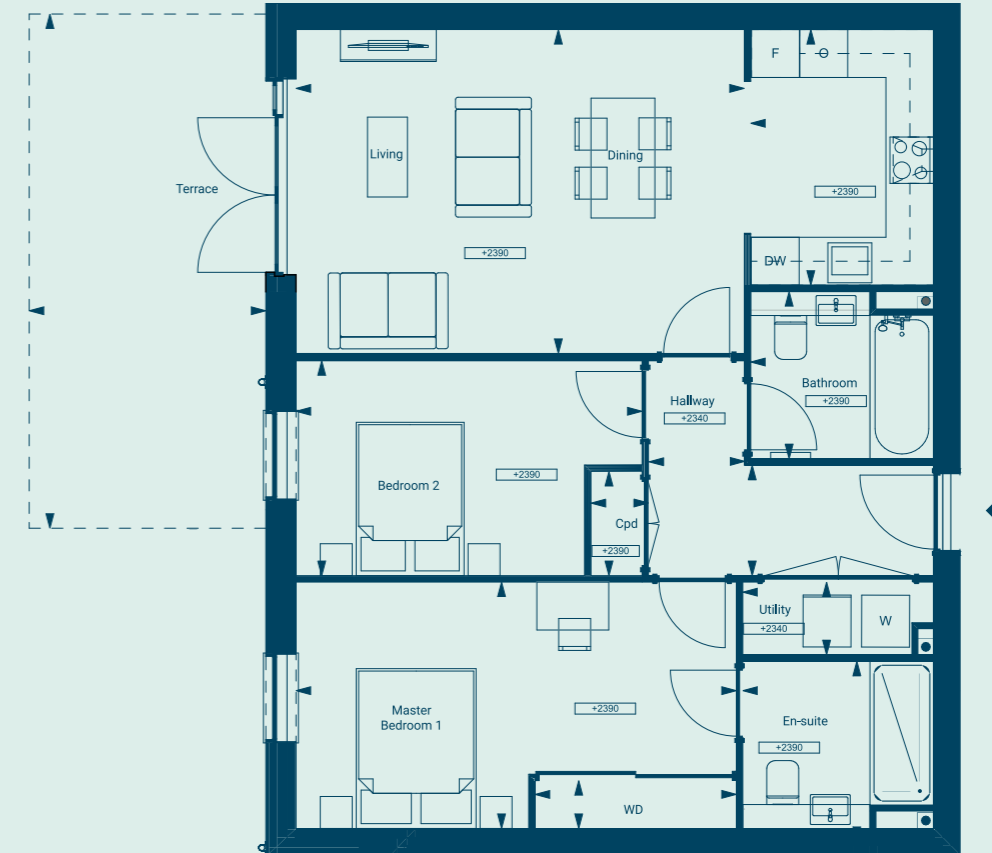
*Not included in Total Area

Location



Apartment 10

2 Bedrooms
Ground Floor

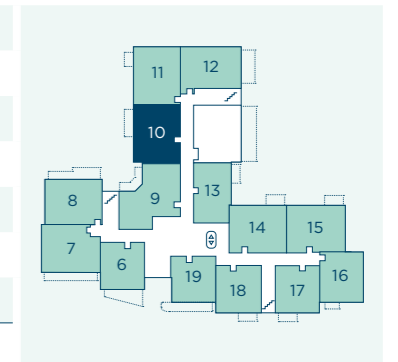


Dimensions

Living/Dining Room	13ft 3in x 18ft 4in	4.05m x 5.61m
Kitchen	10ft 5in x 7ft 6in	3.20m x 2.29m
Bedroom	10ft 1in x 18ft 0in	3.08m x 5.51m
Bedroom 2	8ft 9in x 14ft 2in	2.69m x 4.33m
Shower Room	6ft 10in x 7ft 6in	2.09m x 2.29m
En-Suite	6ft 10in x 7ft 10in	2.09m x 2.39m
Terrace*	125 sq ft	11.7m ²
Total Area	868 sq ft	80.7m²

*Not included in Total Area

Location



Apartment 11

2 Bedrooms
Ground Floor



Dimensions

Living/Dining Room	11ft 10in x 18ft 4	3.62m x 5.61m
Kitchen	10ft 5in x 7ft 6in	3.20m x 2.29m
Bedroom	9ft 2in x 13ft 7in	2.80m x 4.16m
Bedroom 2	8ft 10in x 13ft 7in	2.70m x 4.16m
Shower Room	6ft 10in x 7ft 6in	2.09m x 2.29m
En-Suite	6ft 10in x 7ft 10in	2.09m x 2.39m
Terrace*	114 sq ft	10.6m ²
Total Area	865 sq ft	80.4m²

*Not included in Total Area

Location



Apartment 12

2 Bedrooms
Ground Floor



Dimensions

Living/Dining Room	15ft 8in x 13ft1	4.79m x 4.01m
Kitchen	7ft 6in x 10ft 5in	2.29m x 3.20m
Bedroom	11ft 4in x 12ft 7in	3.47m x 3.85m
Bedroom 2	11ft 4in x 8ft 10in	3.47m x 2.71m
Shower Room	8ft 6in x 6ft 10in	2.61m x 2.09m
En-Suite	7ft 10in x 6ft 10in	2.39m x 2.09m
Terrace*	124 sq ft	11.6m ²
Total Area	867 sq ft	80.6m²

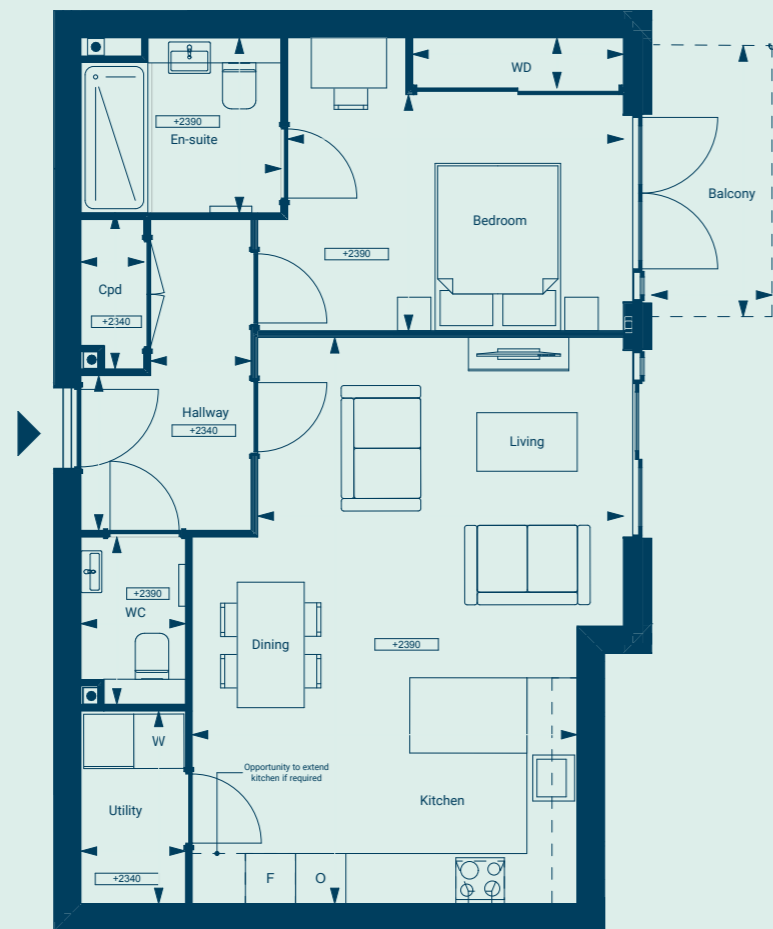
*Not included in Total Area

Location



Apartment 13

1 Bedroom
Ground Floor

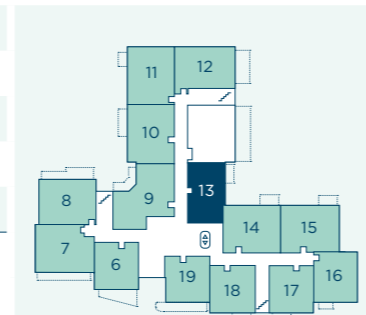


Dimensions

Kitchen/Living/Dining Room	22ft 2in x 15ft 1in	6.77m x 4.60m
Bedroom	9ft 3in x 13ft 1in	2.82m x 4.01m
Shower Room	6ft 10in x 7ft 10in	2.09m x 2.39m
WC	6ft 6in x 4ft 1in	2.00m x 1.25m
Balcony*	55 sq ft	5.1m ²
Total Area	711 sq ft	66.1m²

*Not included in Total Area

Location



Apartment 14

2 Bedrooms
Ground Floor



Dimensions

Living/Dining Room	18ft 4in x 13ft 3in	5.61m x 4.06m
Kitchen	7ft 6in x 10ft 6in	2.29m x 3.21m
Bedroom	18ft 0in x 10ft 0in	5.51m x 3.05m
Bedroom 2	14ft 2in x 8ft 10in	4.33m x 2.71m
Shower Room	7ft 6in x 6ft 10in	2.29m x 2.09m
En-Suite	7ft 10in x 6ft 10in	2.39m x 2.09m
Balcony*	52 sq ft	4.9m ²
Total Area	864 sq ft	80.3m²

*Not included in Total Area

Location



Apartment 15

2 Bedrooms
Ground Floor



Dimensions

Living/Dining Room	18ft 4in x 13ft 3in	5.61m x 4.06m
Kitchen	7ft 6in x 10ft 5in	2.29m x 3.20m
Bedroom	18ft 0in x 10ft 1in	5.51m x 3.08m
Bedroom 2	14ft 2in x 8ft 9in	4.33m x 2.69m
Shower Room	7ft 6in x 6ft 10in	2.29m x 2.09m
En-Suite	7ft 10in x 6ft 10in	2.39m x 2.09m
Balcony*	52 sq ft	4.9m ²

Total Area **864 sq ft** **80.3m²**

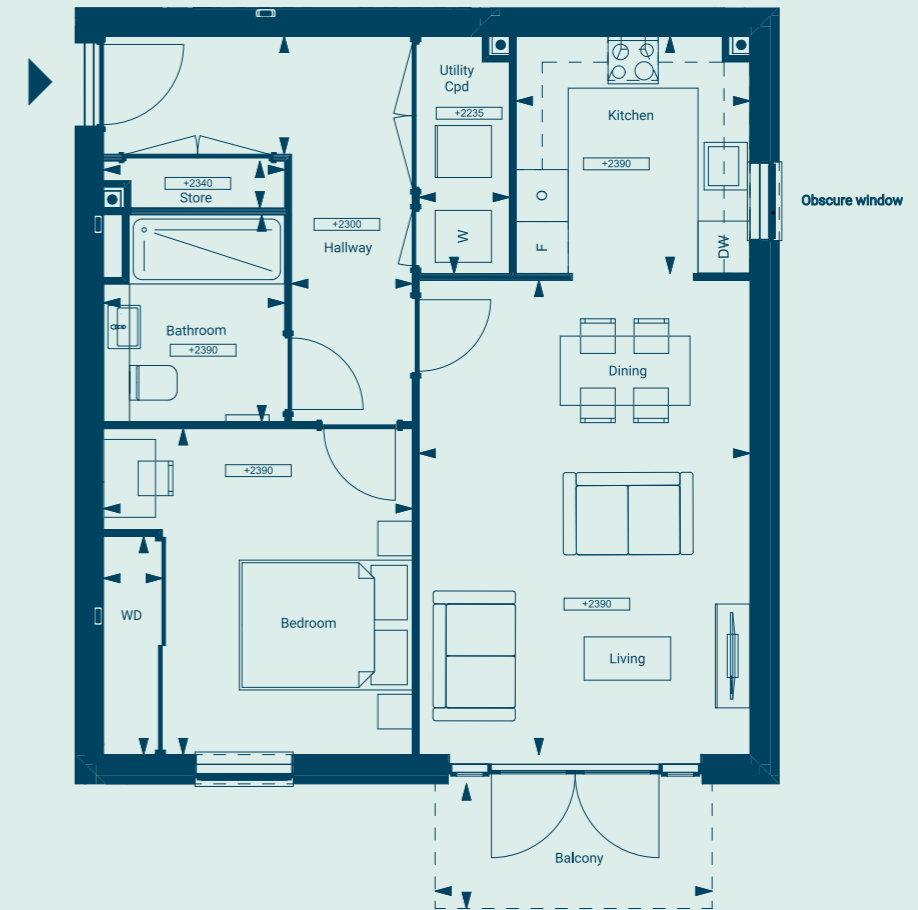
*Not included in Total Area

Location



Apartment 16

1 Bedroom
Ground Floor



Dimensions

Living/Dining Room	17ft 11in x 12ft 6in	5.47m x 3.82m
Kitchen	8ft 11in x 8ft 10in	2.74m x 2.70m
Bedroom	12ft 4in x 11ft 8in	3.76m x 3.56m
Shower Room	7ft 10in x 6ft 10in	2.39m x 2.09m
Balcony*	52 sq ft	4.9m ²

Total Area **674 sq ft** **62.7m²**

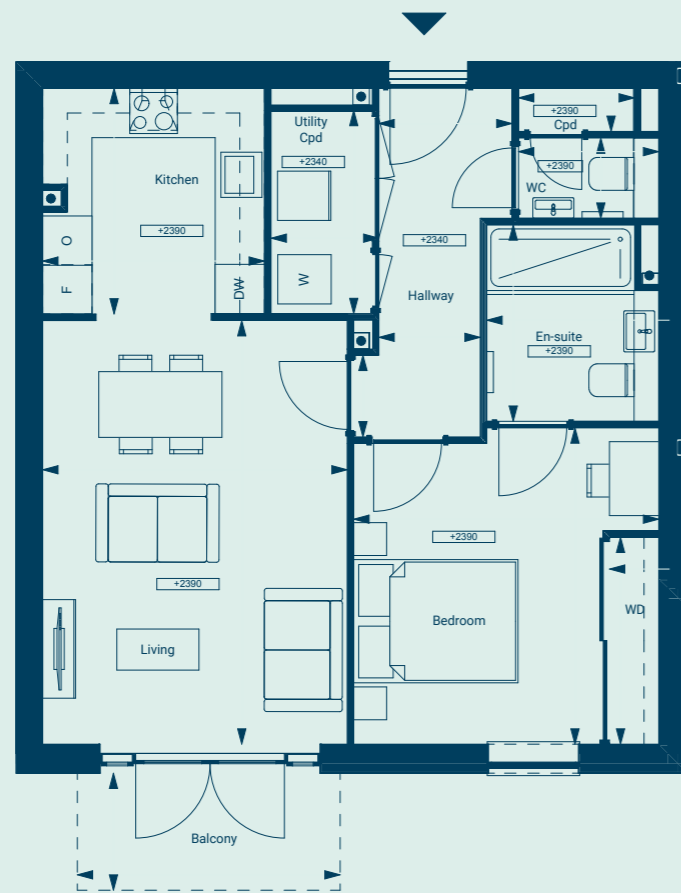
*Not included in Total Area

Location



Apartment 17

1 Bedroom
Ground Floor



Dimensions

Living/Dining Room	16ft 10in x 12ft 1in	5.15m x 3.70m
Kitchen	8ft 11in x 8ft 10in	2.74m x 2.70m
Bedroom	12ft 7in x 12ft 2in	3.85m x 3.71m
En-Suite	7ft 10in x 6ft 10in	2.39m x 2.09m
WC	3ft 2in x 5ft 6in	0.97m x 1.70m
Balcony*	52 sq ft	4.9m ²
Total Area	652 sq ft	60.6m²

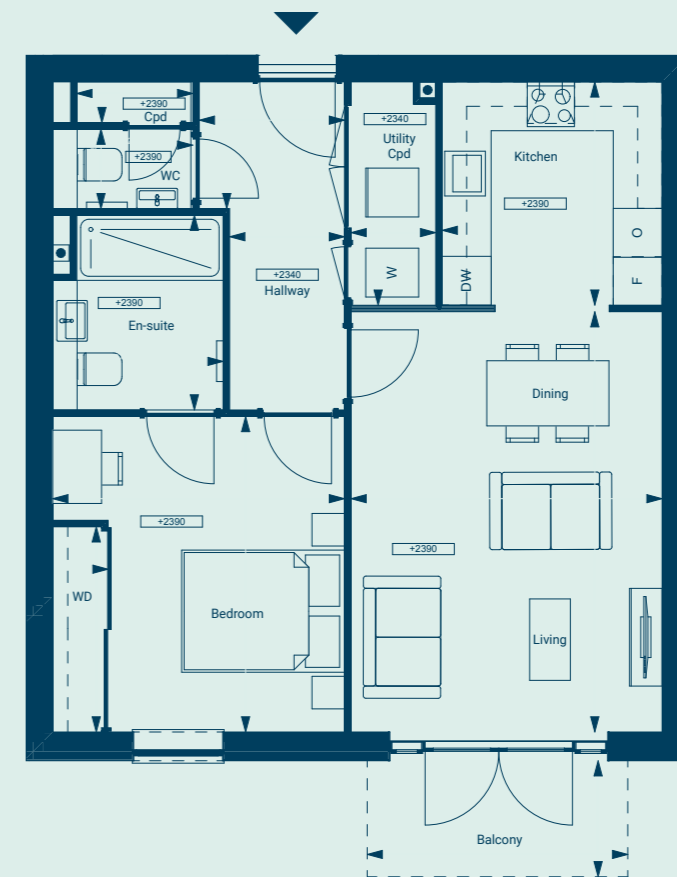
*Not included in Total Area

Location



Apartment 18

1 Bedroom
Ground Floor



Dimensions

Living/Dining Room	16ft 11in x 12ft 6in	5.16m x 3.82m
Kitchen	8ft 11in x 8ft 10in	2.74m x 2.70m
Bedroom	12ft 8in x 11ft 8in	3.87m x 3.58m
En-Suite	7ft 10in x 6ft 10in	2.39m x 2.09m
WC	3ft 2in x 5ft 7in	0.97m x 1.72m
Balcony*	52 sq ft	4.9m ²
Total Area	651 sq ft	60.5m²

*Not included in Total Area

Location



Apartment 19

1 Bedroom
Ground Floor



Dimensions

Living/Dining Room	16ft 11in x 12ft 6in	5.16m x 3.82m
Kitchen	8ft 11in x 8ft 10in	2.74m x 2.70m
Bedroom	12ft 8in x 11ft 8in	3.87m x 3.58m
En-Suite	7ft 10in x 6ft 10in	2.39m x 2.09m
WC	3ft 2in x 5ft 7in	0.97m x 1.72m
Terrace*	208 sq ft	19.4m ²
Total Area	651 sq ft	60.5m²

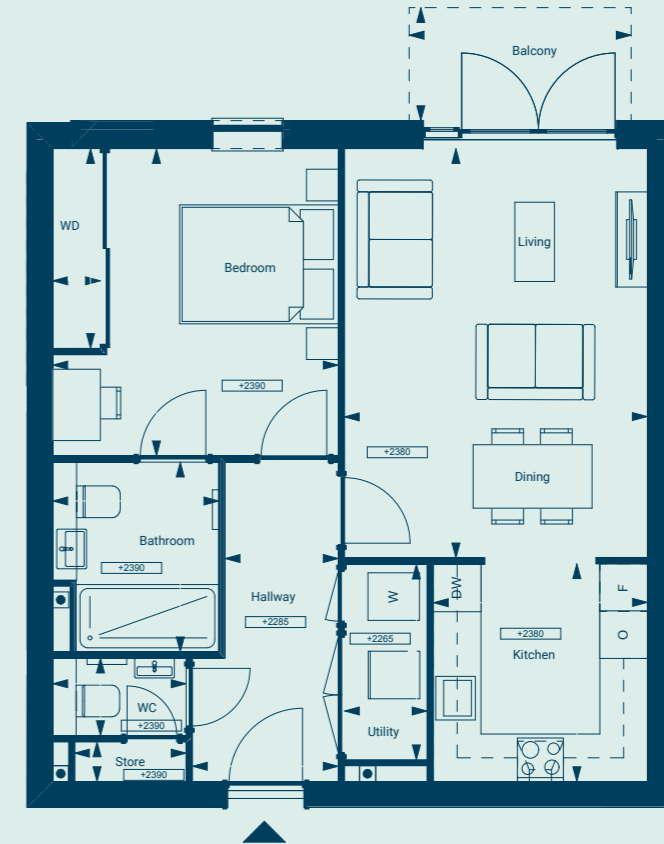
*Not included in Total Area

Location



Apartment 20

1 Bedroom
First Floor

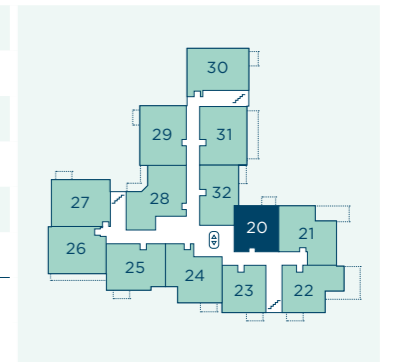


Dimensions

Living/Dining Room	16ft 11in x 12ft 6in	5.16m x 3.82m
Kitchen	8ft 11in x 8ft 10in	2.74m x 2.70m
Bedroom	12ft 8in x 11ft 8in	3.87m x 3.60m
En-Suite	7ft 10in x 6ft 10in	2.39m x 2.09m
WC	3ft 2in x 5ft 6in	0.97 x 1.68m
Balcony*	47 sq ft	4.4m ²
Total Area	652 sq ft	60.6m²

*Not included in Total Area

Location



Apartment 21

2 Bedrooms
First Floor



Dimensions

Kitchen/Living/Dining Room	25ft 5in x 10ft 5in	7.75 x 3.20m
Bedroom	18ft 0in x 9ft 11in	5.51m x 3.04m
Bedroom 2	13ft 7in x 9ft 8in	4.15m x 2.95m
Shower Room	7ft 6in x 6ft 10in	2.31m x 2.09m
En-Suite	7ft 10in x 6ft 10in	2.39m x 2.09m
Balcony*	133 sq ft	12.4m ²
Total Area	888 sq ft	82.5m²

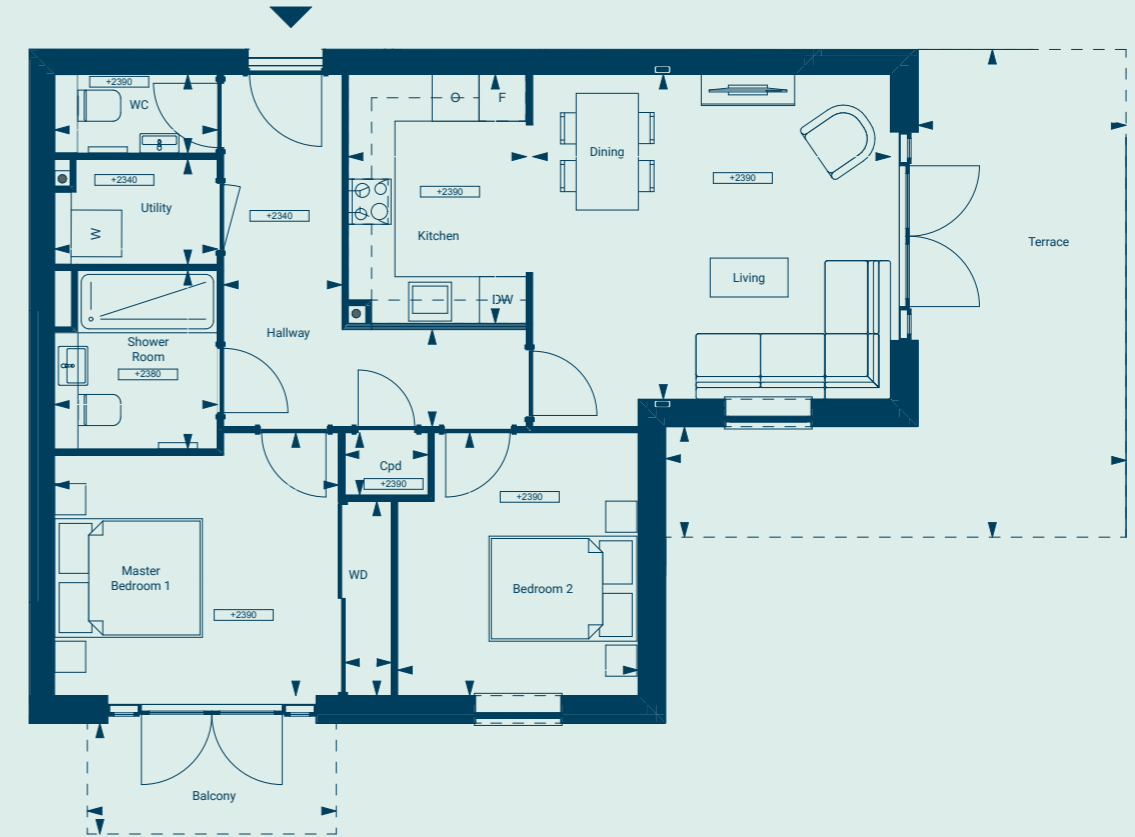
*Not included in Total Area

Location



Apartment 22

2 Bedrooms
First Floor

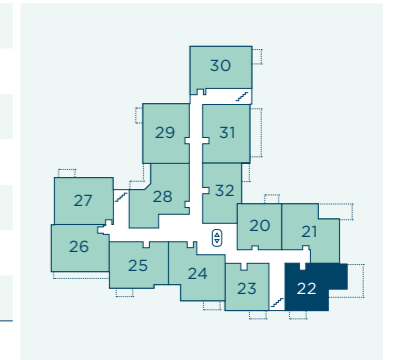


Dimensions

Living/Dining Room	13ft 8in x 15ft 0in	4.17m x 4.59m
Kitchen	10ft 5in x 7ft 6in	3.20m x 2.29m
Bedroom	11ft 0in x 11ft 11in	3.37m x 3.65m
Bedroom 2	11ft 0in x 10ft 1in	3.37m x 3.09m
Shower Room	7ft 6in x 6ft 10in	2.29m x 2.09m
WC	3ft 3in x 6ft 10in	1.01m x 2.09m
Balcony*	284 sq ft	26.4m ²
Total Area	804 sq ft	74.7m²

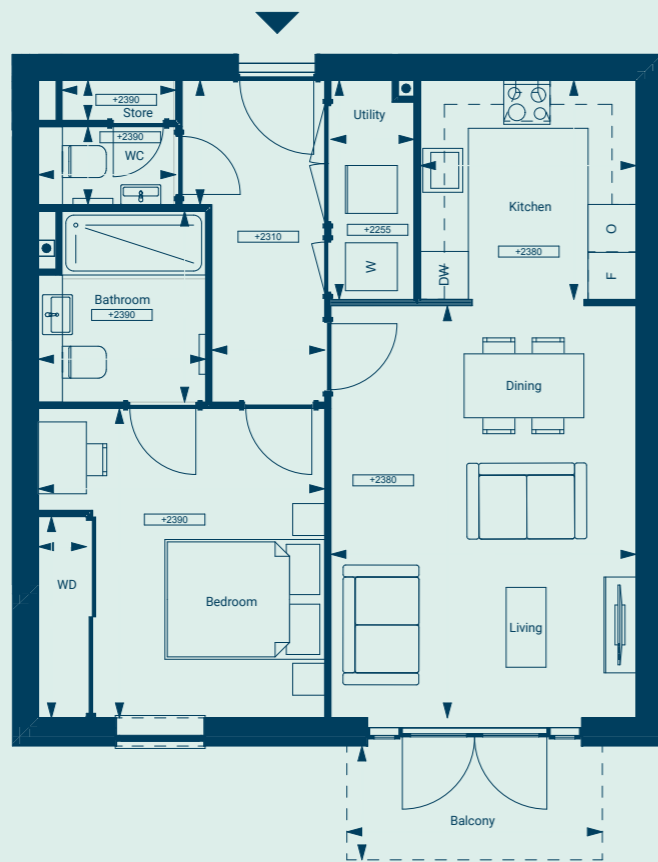
*Not included in Total Area

Location



Apartment 23

1 Bedroom
First Floor



Dimensions

Living/Dining Room	16ft 11in x 12ft 6in	5.16m x 3.82m
Kitchen	8ft 11in x 8ft 10in	2.74m x 2.70m
Bedroom	12ft 8in x 11ft 8in	3.87m x 3.58m
En-Suite	7ft 10in x 6ft 10in	2.39m x 2.09m
WC	3ft 2in x 5ft 7in	0.97m x 1.72m
Balcony*	52 sq ft	4.9m ²
Total Area	651 sq ft	60.5m²

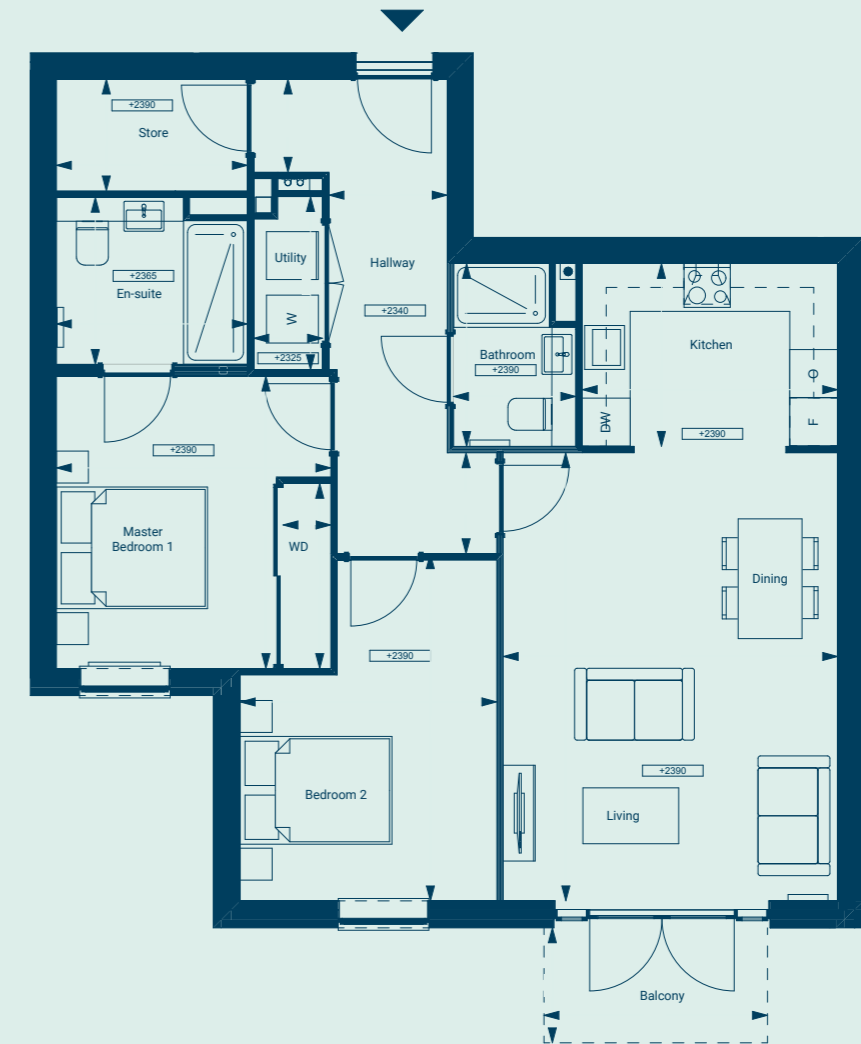
*Not included in Total Area

Location



Apartment 24

2 Bedrooms
First Floor

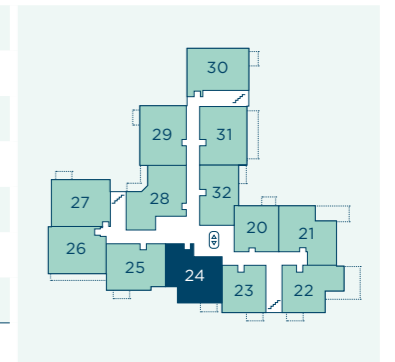


Dimensions

Living/Dining Room	18ft 4in x 13ft 8in	5.61m x 4.19m
Kitchen	7ft 6in x 10ft 5in	2.29m x 3.20m
Bedroom	12ft 0in x 11ft 3in	3.66m x 3.43m
Bedroom 2	14ft 2in x 10ft 6in	4.34m x 3.21m
Shower Room	7ft 6in x 5ft 0in	2.29m x 1.53m
En-Suite	6ft 10in x 7ft 10in	2.09m x 2.39m
Balcony*	46 sq ft	4.3m ²
Total Area	897 sq ft	83.4m²

*Not included in Total Area

Location



Apartment 25

2 Bedrooms
First Floor

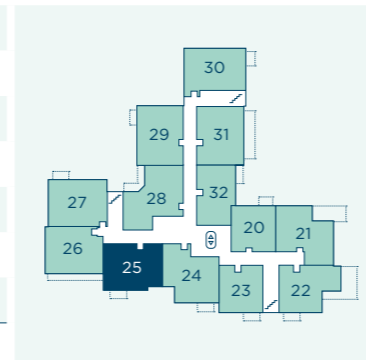


Dimensions

Living/Dining Room	18ft 4in x 13ft 1in	5.61m x 4.00m
Kitchen	7ft 6in x 10ft 5in	2.29m x 3.20m
Bedroom	15ft 5in x 10ft 0in	4.71m x 3.05m
Bedroom 2	13ft 7in x 9ft 1in	4.16m x 2.78m
Shower Room	7ft 6in x 6ft 10in	2.29m x 2.09m
En-Suite	7ft 10in x 6ft 10in	2.39m x 2.09m
Balcony*	52 sq ft	4.9m ²
Total Area	848 sq ft	78.8m²

*Not included in Total Area

Location



Apartment 26

2 Bedrooms
First Floor

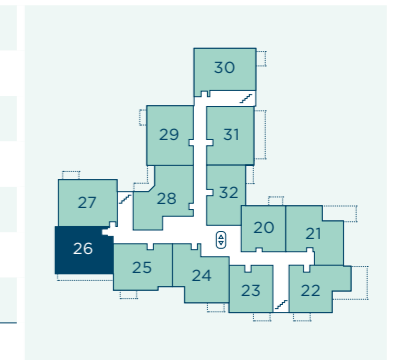


Dimensions

Living/Dining Room	18ft 5in x 11ft 10in	5.62m x 3.61m
Kitchen	7ft 6in x 10ft 5in	2.29m x 3.20m
Bedroom	14ft 2in x 11ft 5in	4.34m x 3.48m
Bedroom 2	14ft 2in x 8ft 10in	4.34m x 2.71m
Shower Room	7ft 6in x 6ft 10in	2.29m x 2.09m
En-Suite	7ft 10in x 6ft 10in	2.39m x 2.09m
Balcony*	137 sq ft	12.8m ²
Total Area	844 sq ft	78.5m²

*Not included in Total Area

Location



Apartment 27

2 Bedrooms
First Floor

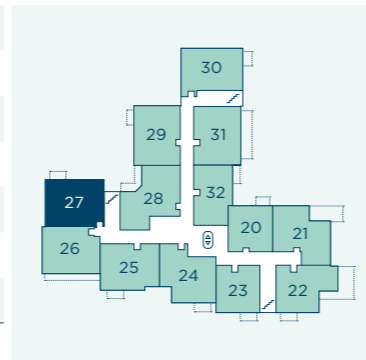


Dimensions

Living/Dining Room	18ft 4in x 11ft 10in	5.61m x 3.61m
Kitchen	7ft 6in x 10ft 5in	2.29m x 3.20m
Bedroom	14ft 2in x 11ft 3in	4.33m x 3.45m
Bedroom 2	14ft 2in x 8ft 10in	4.33m x 2.71m
Shower Room	7ft 6in x 6ft 10in	2.29m x 2.09m
En-Suite	7ft 10in x 6ft 10in	2.39m x 2.09m
Balcony*	46.2 sq ft	4.3m ²
Total Area	862 sq ft	80.1m²

*Not included in Total Area

Location



Apartment 28

2 Bedrooms
First Floor

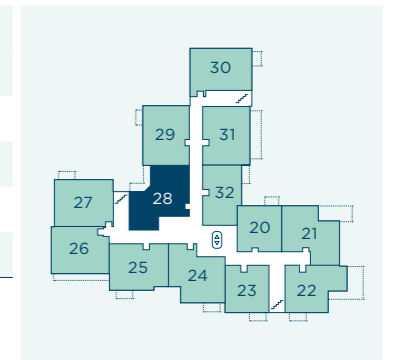


Dimensions

Kitchen/Living/Dining Room	21ft 3in x 16ft 9in	6.50m x 5.13m
Bedroom	9ft 8in x 13ft 1in	2.97m x 4.01m
Bedroom 2	11ft 9in x 8ft 7in	3.59m x 2.64m
Shower Room	6ft 10in x 7ft 6in	2.09m x 2.29m
En-Suite	6ft 10in x 7ft 10in	2.09m x 2.39m
Balcony*	107 sq ft	10m ²
Total Area	922 sq ft	85.7m²

*Not included in Total Area

Location



Apartment 29

2 Bedrooms
First Floor



Dimensions

Living/Dining Room	13ft 3in x 18ft 4in	4.06m x 5.61m
Kitchen	10ft 5in x 7ft 6in	3.20m x 2.29m
Bedroom	10ft 1in x 18ft 0in	3.08m x 5.51m
Bedroom 2	8ft 9in x 14ft 2in	2.69m x 4.33m
Shower Room	6ft 10in x 7ft 6in	2.09m x 2.29m
En-Suite	6ft 10in x 7ft 10in	2.09m x 2.39m
Balcony*	47 sq ft	4.4m ²
Total Area	868 sq ft	80.7m²

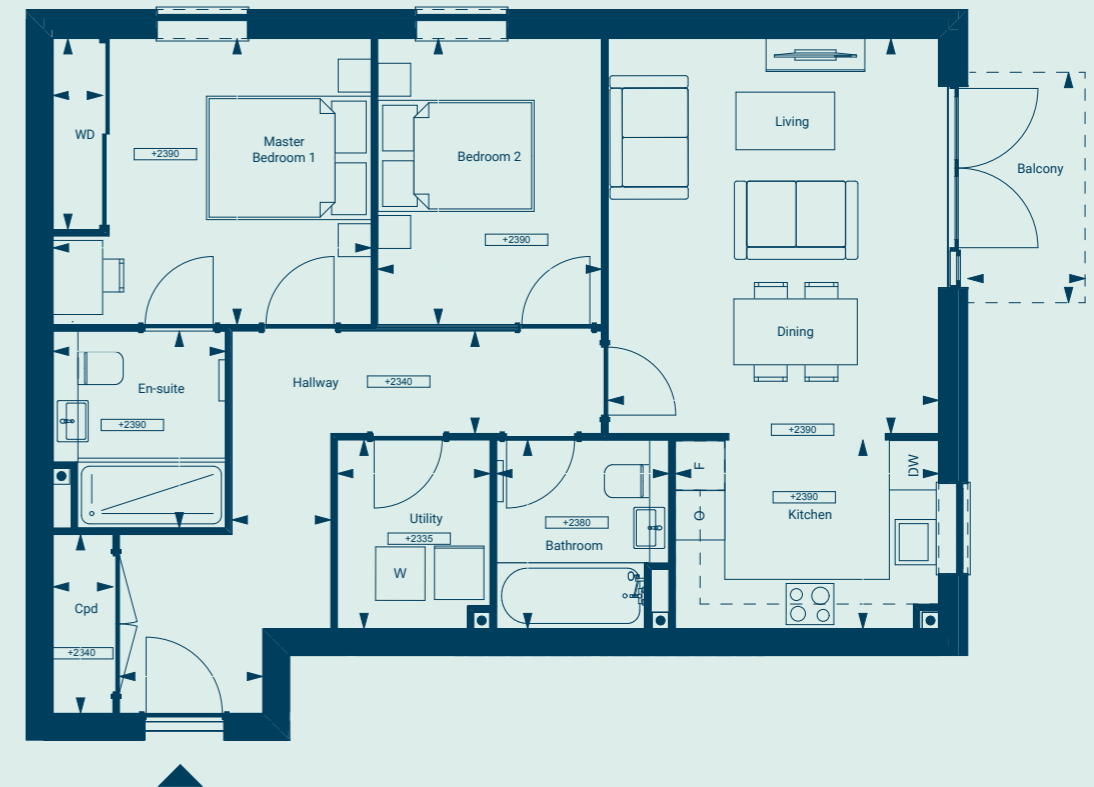
*Not included in Total Area

Location



Apartment 30

2 Bedrooms
First Floor



Dimensions

Living/Dining Room	15ft 8in x 13ft 1in	4.79m x 4.01m
Kitchen	7ft 6in x 10ft 5in	2.29m x 3.20m
Bedroom	11ft 4in x 12ft 7in	3.47m x 3.86m
Bedroom 2	11ft 4in x 8ft 11in	3.47m x 2.72m
Shower Room	7ft 6in x 6ft 0in	2.29m x 1.85m
En-Suite	7ft 10in x 6ft 10in	2.39m x 2.09m
Balcony*	47 sq ft	4.4m ²
Total Area	866 sq ft	80.5m²

*Not included in Total Area

Location



Apartment 31

2 Bedrooms
First Floor

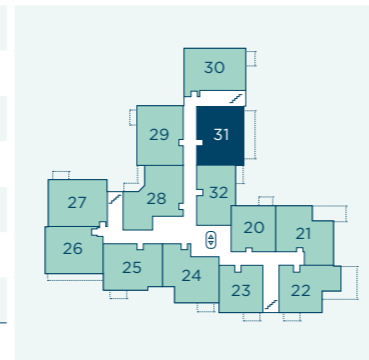


Dimensions

Living/Dining Room	13ft 3in x 18ft 4in	4.05m x 5.61m
Kitchen	10ft 5in x 7ft 6in	3.20m x 2.29m
Bedroom	9ft 10in x 18ft 0in	3.01m x 5.51m
Bedroom 2	9ft 1in x 14ft 0in	2.77m x 4.28m
Shower Room	6ft 10in x 7ft 6in	2.09m x 2.29m
En-Suite	6ft 10in x 7ft 10in	2.09m x 2.39m
Balcony*	192 sq ft	17.9m ²
Total Area	868 sq ft	80.7m²

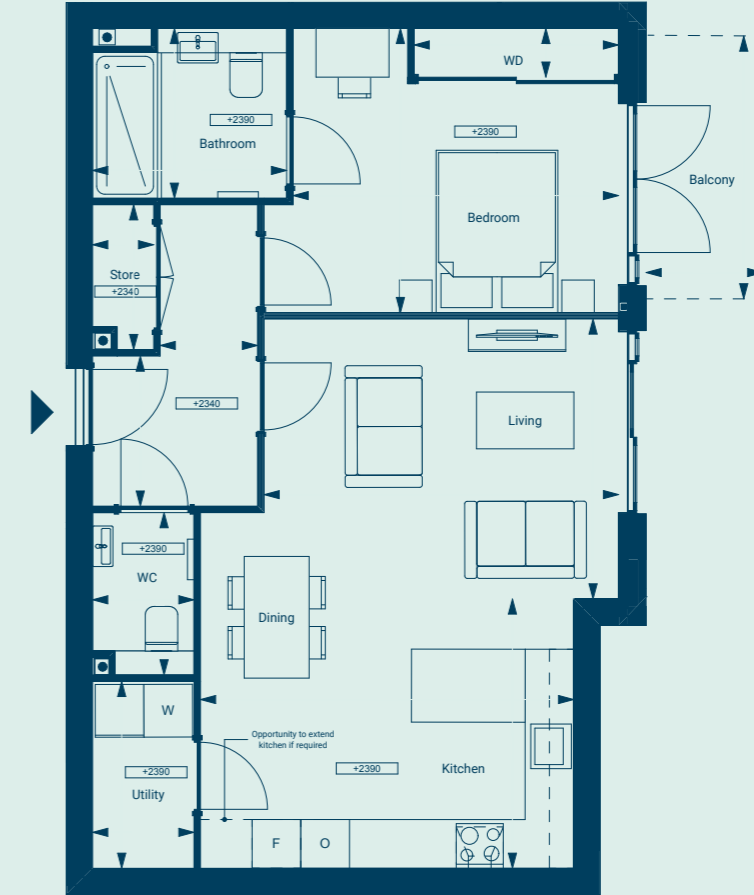
*Not included in Total Area

Location



Apartment 32

1 Bedroom
First Floor

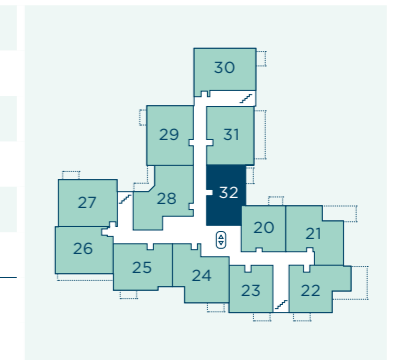


Dimensions

Living/Dining Room	11ft 3in x 14ft 4in	3.45m x 4.37m
Kitchen	10ft 10in x 15ft 1in	3.32m x 4.60m
Bedroom	11ft 5in x 13ft 1in	3.50m x 4.01m
En-Suite	6ft 10in x 7ft 10in	2.09m x 2.39m
WC	6ft 6in x 4ft 1in	2.00m x 1.25m
Balcony*	54 sq ft	5.1m ²
Total Area	711 sq ft	66.1m²

*Not included in Total Area

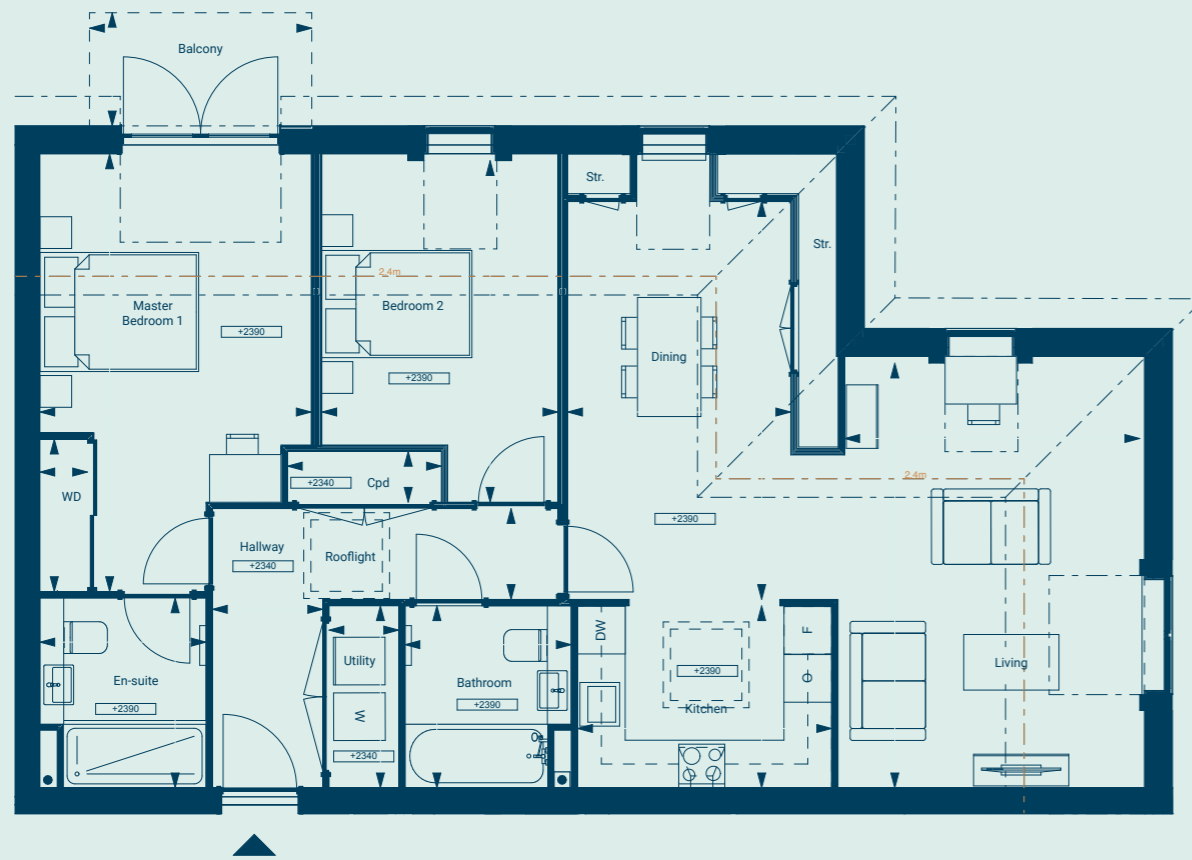
Location



Apartment 33

2 Bedrooms
Second Floor

--- Ceiling 2.4m
--- Ceiling 2.1m



Dimensions

Living	17ft 6in x 12ft 2in	5.34m x 3.71m
Kitchen/Dining Room	23ft 11in x 10ft 5in	7.30m x 3.20m
Bedroom	18ft 0in x 11ft 2in	5.51m x 3.41m
Bedroom 2	14ft 1in x 9ft 8in	4.30m x 2.97m
Shower Room	7ft 6in x 6ft 10in	2.29m x 2.09m
En-Suite	7ft 10in x 6ft 10in	2.39m x 2.09m
Balcony*	47 sq ft	4.4m ²
Total Area	990 sq ft	92m²

*Not included in Total Area

Location



Apartment 34

2 Bedrooms
Second Floor

--- Ceiling 2.4m
--- Ceiling 2.1m

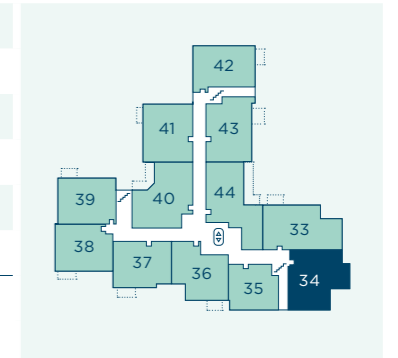


Dimensions

Living Room	12ft 4in x 16ft 10in	3.78m x 5.14m
Kitchen	6ft 0in x 12ft 2in	1.84m x 3.72m
Bedroom	14ft 6in x 9ft 8in	4.43m x 2.97m
Bedroom 2	14ft 5in x 10ft 0in	4.40m x 3.06m
En-Suite	6ft 11in x 7ft 10in	2.11m x 2.39m
WC	4ft 11in x 5ft 11in	1.52m x 1.82m
Total Area	914 sq ft	85m²

*Not included in Total Area

Location



Apartment 35

1 Bedroom
Second Floor

--- Ceiling 2.4m
--- Ceiling 2.1m



Dimensions

Living/Dining Room	16ft 7in x 14ft 10in	5.07m x 4.53m
Kitchen	8ft 11in x 8ft 10in	2.74m x 2.70m
Bedroom	13ft 0in x 11ft 3in	3.98m x 3.45m
En-Suite	7ft 10in x 6ft 10in	2.39m x 2.09m
WC	4ft 5in x 5ft 6in	1.36m x 1.70m
Total Area	663 sq ft	61.6m²

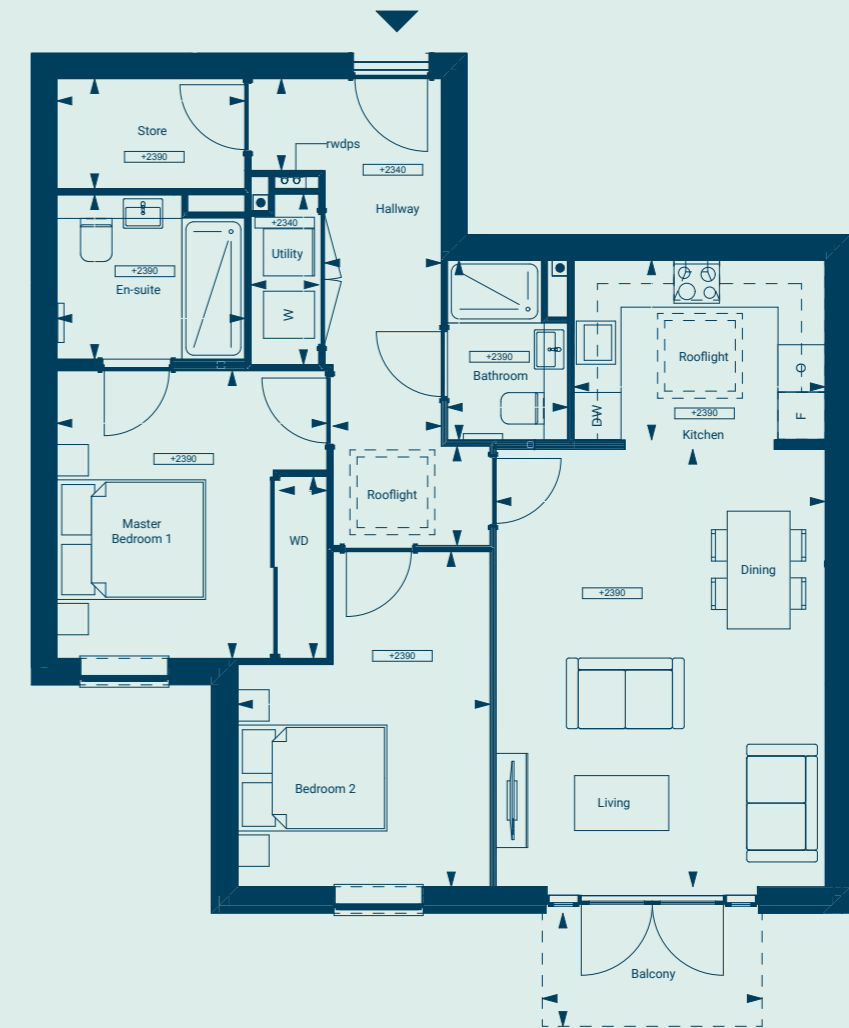
*Not included in Total Area

Location



Apartment 36

2 Bedrooms
Second Floor

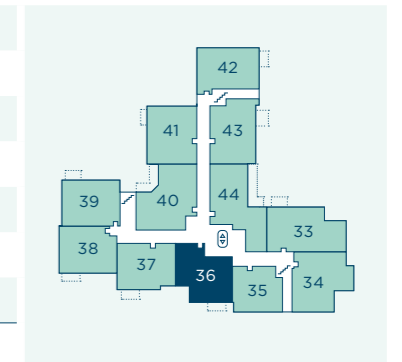


Dimensions

Living/Dining Room	18ft 3in x 13ft 8in	5.57m x 4.19m
Kitchen	7ft 6in x 10ft 5in	2.29m x 3.20m
Bedroom	12ft 0in x 11ft 3in	3.66m x 3.43m
Bedroom 2	13ft 11in x 10ft 6in	4.26m x 3.21m
Shower Room	7ft 6in x 5ft 0in	2.29m x 1.53m
En-Suite	6ft 10in x 7ft 10in	2.09m x 2.39m
Balcony*	47 sq ft	4.4m ²
Total Area	897 sq ft	83.4m²

*Not included in Total Area

Location



Apartment 37

2 Bedrooms
Second Floor



Dimensions

Living/Dining Room	18ft 4in x 13ft 1in	5.61m x 4.00m
Kitchen	7ft 6in x 10ft 5in	2.29m x 3.20m
Bedroom	15ft 5in x 10ft 0in	4.71m x 3.05m
Bedroom 2	13ft 7in x 9ft 1in	4.16m x 2.78m
Shower Room	7ft 6in x 6ft 10in	2.29m x 2.09m
En-Suite	7ft 10in x 6ft 10in	2.39 x 2.09m
Balcony*	53 sq ft	5.0m ²
Total Area	850 sq ft	79m²

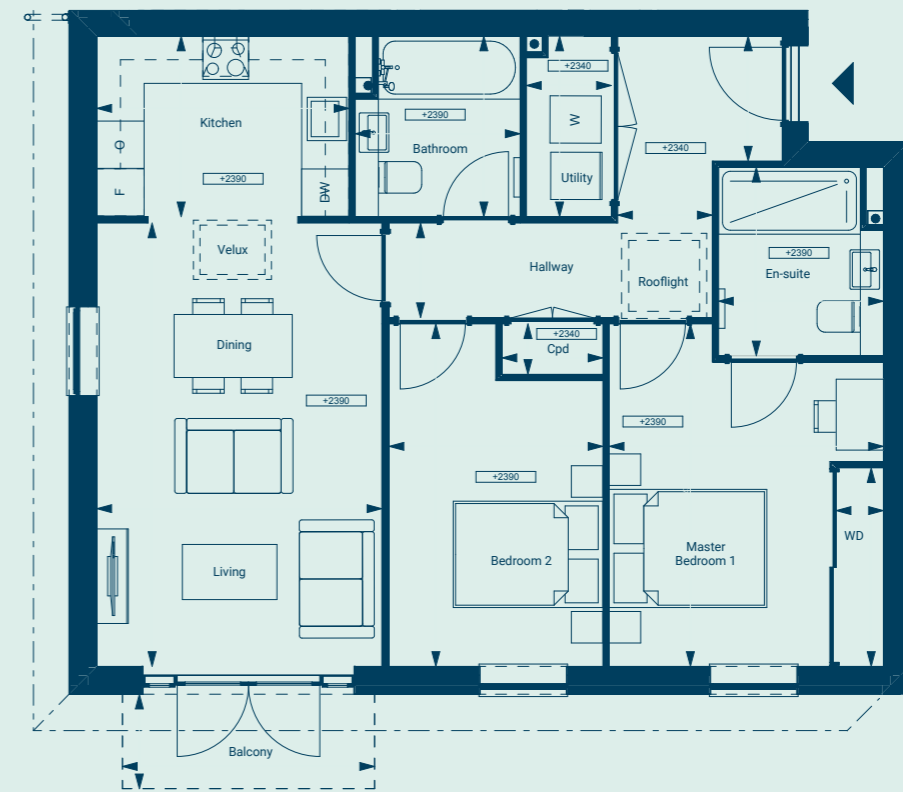
*Not included in Total Area

Location



Apartment 38

2 Bedrooms
Second Floor

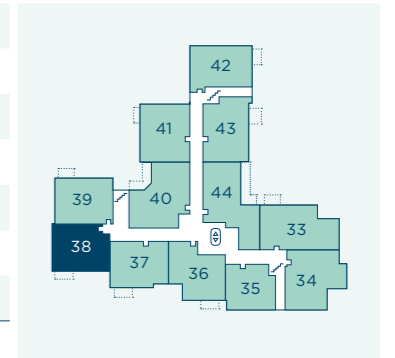


Dimensions

Living/Dining Room	18ft 5in x 11ft 10in	5.62m x 3.61m
Kitchen	7ft 6in x 10ft 5in	2.29m x 3.20m
Bedroom	14ft 2in x 11ft 5in	4.34m x 3.48m
Bedroom 2	14ft 2in x 8ft 10in	4.34m x 2.71m
Shower Room	7ft 6in x 6ft 10in	2.29m x 2.09m
En-Suite	7ft 10in x 6ft 10in	2.39m x 2.09m
Balcony*	45 sq ft	4.2m ²
Total Area	843 sq ft	78.4m²

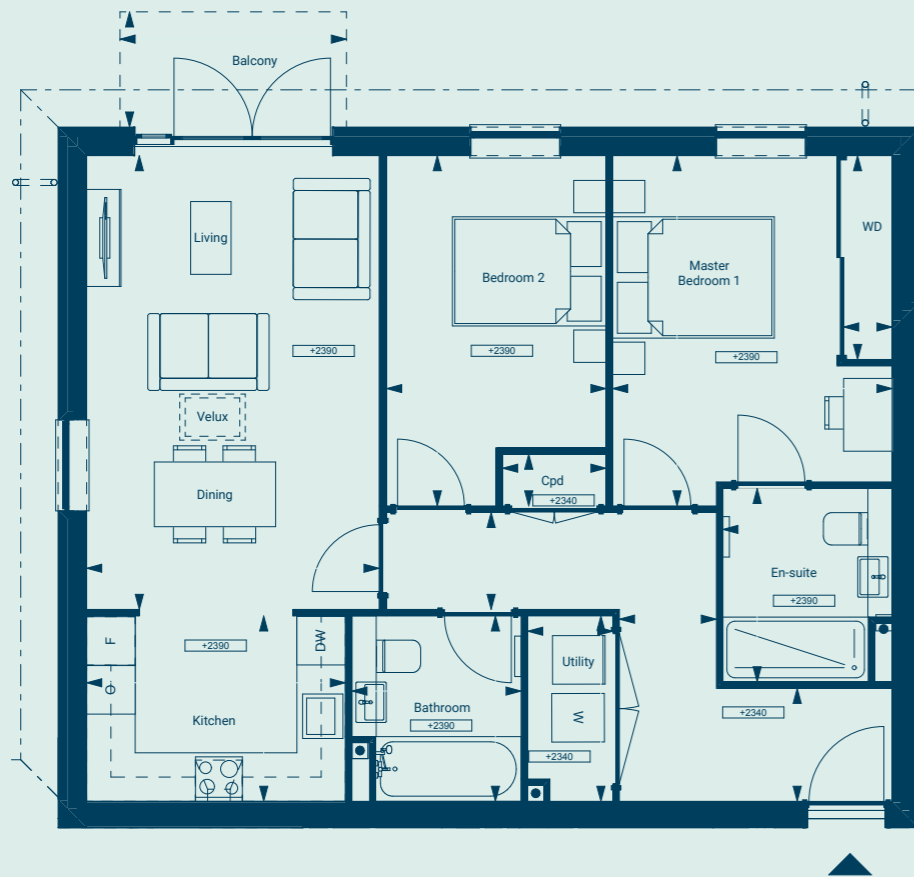
*Not included in Total Area

Location



Apartment 39

2 Bedrooms
Second Floor



Dimensions

Living/Dining Room	18ft 4in x 11ft 10in	5.61m x 3.61m
Kitchen	7ft 6in x 10ft 5in	2.29m x 3.20m
Bedroom	14ft 2in x 11ft 3in	4.33m x 3.45m
Bedroom 2	14ft 2in x 8ft 10in	4.33m x 2.71m
Shower Room	7ft 6in x 6ft 10in	2.29m x 2.09m
En-Suite	7ft 10in x 7ft 10in	2.39m x 2.41m
Balcony*	47 sq ft	4.4m ²
Total Area	862 sq ft	80.1m²

*Not included in Total Area

Location



Apartment 40

2 Bedrooms
Second Floor

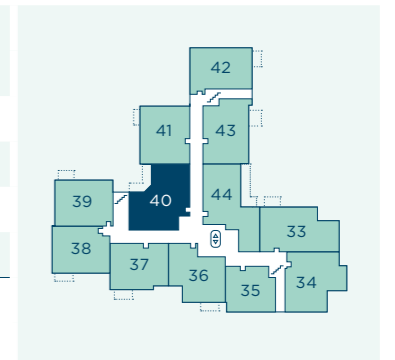


Dimensions

Kitchen/Living/Dining Room	21ft 3in x 16.8in	6.50m x 5.10m
Bedroom	11ft 6in x 15ft 8in	3.53m x 4.78m
Bedroom 2	11ft 6in x 8ft 7in	3.53m x 2.64m
Shower Room	6ft 10in x 7ft 6in	2.09m x 2.29m
En-Suite	6ft 10in x 7ft 10in	2.09m x 2.39m
Balcony*	108 sq ft	10.1m ²
Total Area	1,019 sq ft	94.7m²

*Not included in Total Area

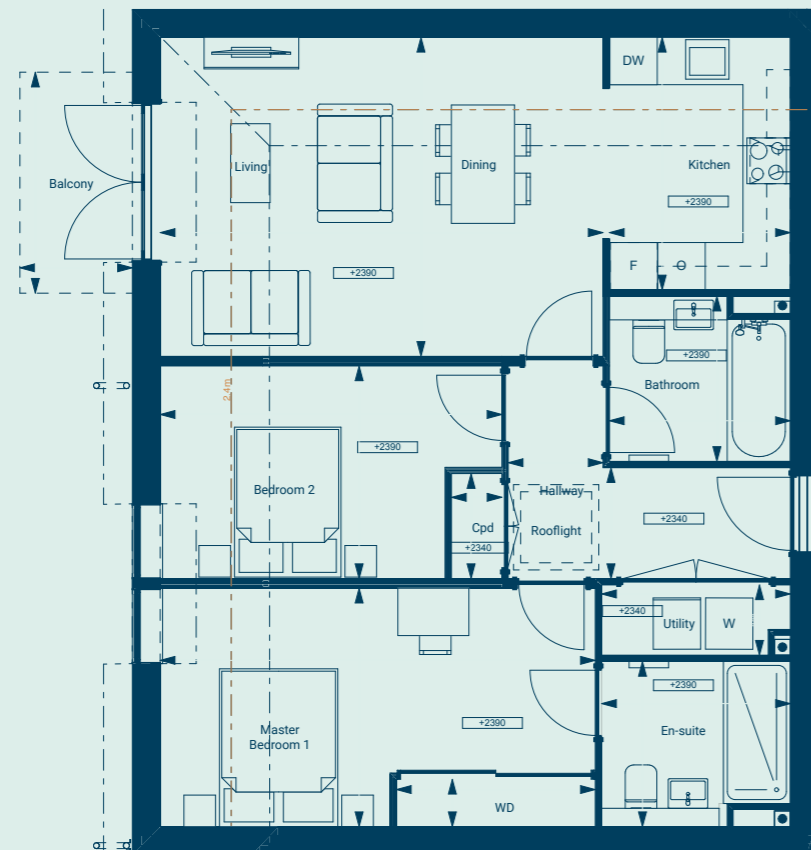
Location



Apartment 41

2 Bedrooms
Second Floor

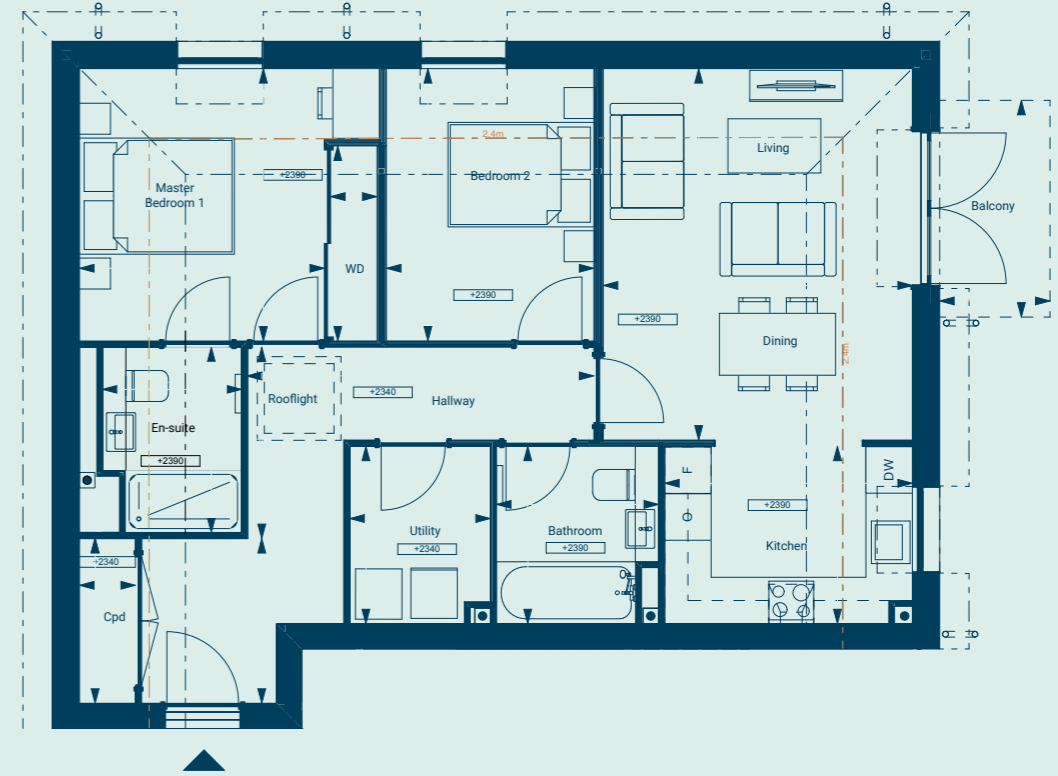
--- Ceiling 2.4m
--- Ceiling 2.1m



Apartment 42

2 Bedrooms
Second Floor

--- Ceiling 2.4m
--- Ceiling 2.1m



Dimensions

Living/Dining Room	13ft 3in x 18ft 4in	4.04m x 5.61m
Kitchen	10ft 5in x 7ft 6in	3.20m x 2.29m
Bedroom	9ft 10in x 18ft 0in	3.02m x 5.51m
Bedroom 2	8ft 9in x 14ft 2in	2.69m x 4.33m
Shower Room	6ft 10in x 7ft 6in	2.09m x 2.29m
En-Suite	6ft 10in x 7ft 10in	2.09m x 2.39m
Balcony*	45 sq ft	4.2m ²
Total Area	862 sq ft	80.1m²

*Not included in Total Area

Location

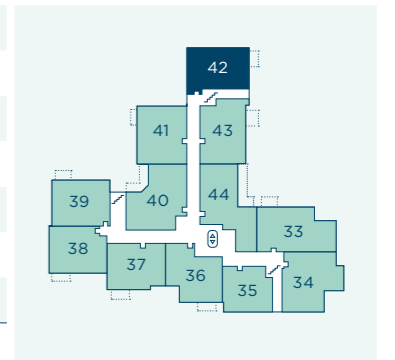


Dimensions

Living/Dining Room	15ft 8in x 13ft 1in	4.79m x 3.99m
Kitchen	7ft 6in x 10ft 5in	2.29m x 3.20m
Bedroom	11ft 6in x 10ft 4in	3.51m x 3.16m
Bedroom 2	11ft 6in x 8ft 9in	3.51m x 2.68m
Shower Room	7ft 6in x 6ft 10in	2.29m x 2.09m
En-Suite	7ft 10in x 6ft 10in	2.39m x 2.09m
Balcony*	47 sq ft	4.4m ²
Total Area	860 sq ft	79.9m²

*Not included in Total Area

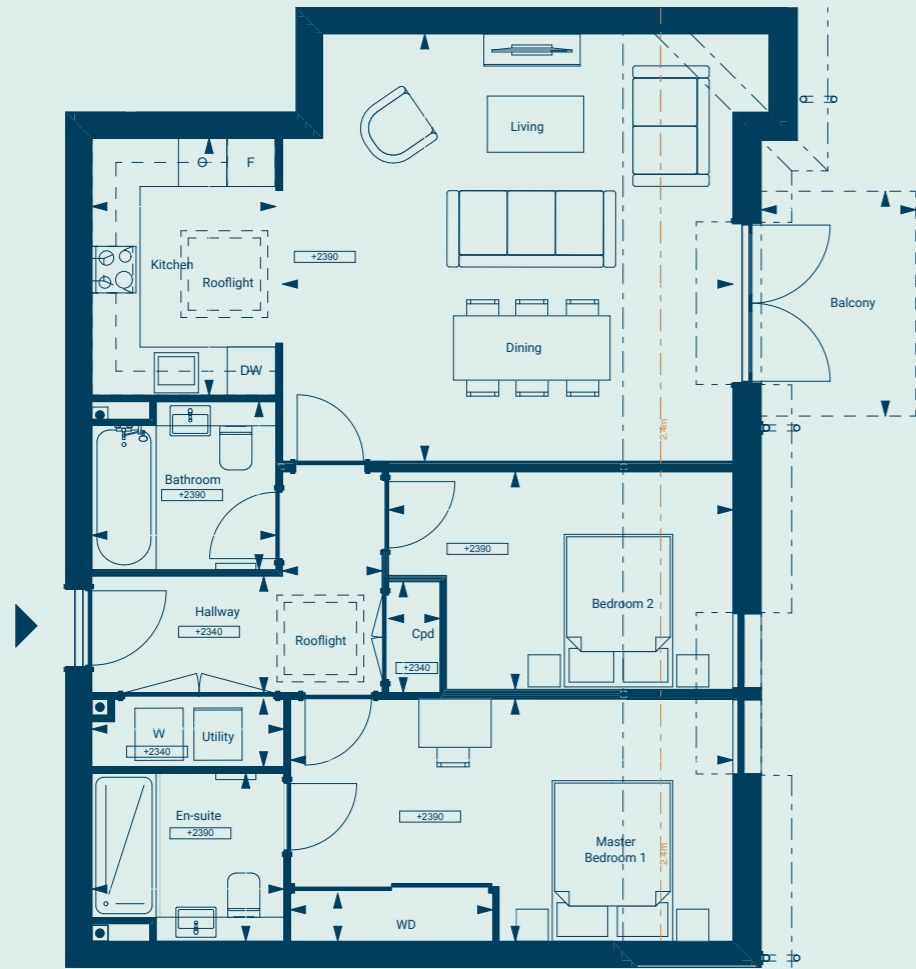
Location



Apartment 43

2 Bedrooms
Second Floor

--- Ceiling 2.4m
--- Ceiling 2.1m



Dimensions

Living/Dining Room	17ft 5in x 18ft 4in	5.32m x 5.61m
Kitchen	10ft 5in x 7ft 6in	3.20m x 2.29m
Bedroom	9ft 10in x 18ft 0in	3.01m x 5.51m
Bedroom 2	8ft 10in x 14ft 0in	2.70m x 4.28m
Shower Room	6ft 10in x 7ft 6in	2.09m x 2.29m
En-Suite	6ft 10in x 7ft 10in	2.09m x 2.39m
Balcony*	62 sq ft	5.8m ²
Total Area	943 sq ft	87.7m²

*Not included in Total Area

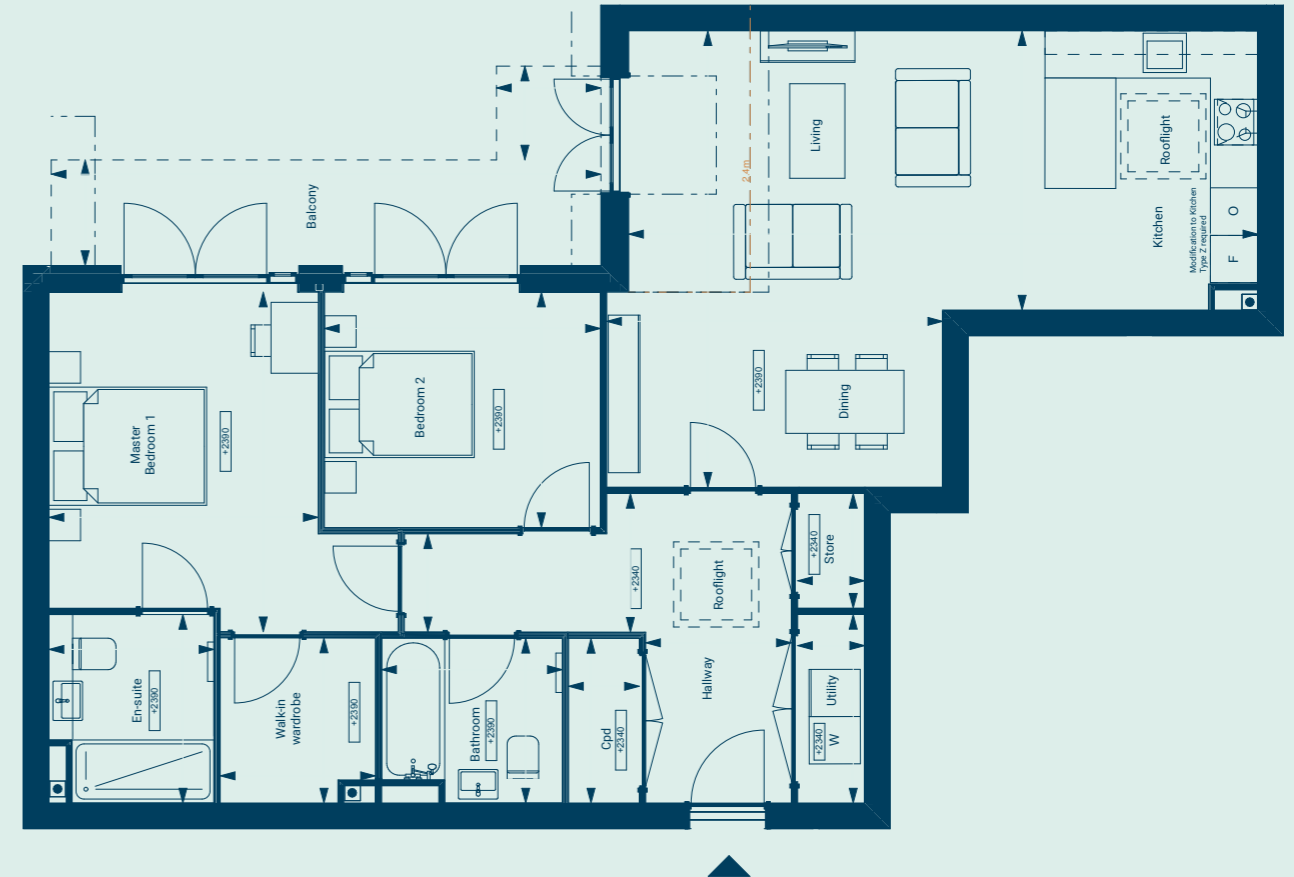
Location



Apartment 44

2 Bedrooms
Second Floor

--- Ceiling 2.4m
--- Ceiling 2.1m

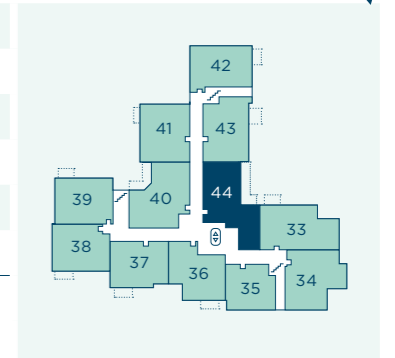


Dimensions

Kitchen/Living/Dining Room	18ft 11in x 26ft 2in	5.79m x 7.98m
Bedroom	14ft 1in x 11ft 2in	4.31m x 3.41m
Bedroom 2	9ft 9in x 11ft 5in	2.98m x 3.50m
Shower Room	6ft 10in x 7ft 9in	2.09m x 2.37m
En-Suite	7ft 10in x 6ft 10in	2.39m x 2.09m
Balcony*	121 sq ft	11.3m ²
Total Area	1,037 sq ft	96.4m²

*Not included in Total Area

Location





OPULENT SPECIFICATION

Specification

Kitchen	<ul style="list-style-type: none"> Fully fitted Flawless range kitchen with a mix of floor and wall hung cabinets and white arabesque 20mm Silestone worktop Light Grey cabinet doors Abode duel handle swan neck taps & Pramis undermount sink Neff ceramic 4-ring hob Neff stainless steel oven with 'slide and hide' door 	<ul style="list-style-type: none"> Neff stainless steel microwave Bosch integrated fridge-freezer Fisher & Paykel single drawer integrated dishwasher Bosch washer dryer in utility cupboard Integrated bins for recycling and waste Lights underside of wall units Brushed chrome kitchen handles
----------------	--	--

Bathroom Shower Room	<ul style="list-style-type: none"> Built in Cashmere coloured vanity unit with solid worktop Bathroom cabinet feature lighting with micro LED strip light Storage within under sink vanity unit Neutral ceramic tiling throughout Kaldewei bath with anti-slip base and fixed bath screen 	<ul style="list-style-type: none"> Vado chrome brassware – mixer taps, shower head, handset hose, shower thermostatic valve JT Fusion rectangle anti-slip shower trays Chrome heated towel rails Ceiling LED downlights Mechanical extract ventilation Chrome grab bar handles
-----------------------------	--	--

Interior finishes	<ul style="list-style-type: none"> Built in wardrobes to all master bedrooms with hanging rail and hat shelf Corma Primo Ultra Carpets in bedrooms Karndean to kitchens, hallways and other living spaces UPVC Double glazed windows, doors and Juliet balconies
--------------------------	--

Electricals	<ul style="list-style-type: none"> Programmable thermostat Pendant light in bedrooms, LED spotlights throughout Kitchen under cabinet lighting Shaver socket located in the bathroom Telephone data points in living room and bedrooms Electric 5amp double white sockets Video door entry with handset and integrated screen
--------------------	--

Security	<ul style="list-style-type: none"> Video door entry system to every apartment Tunstall call centre for out of hours Smoke detectors/ fire alarms ring in every apartment Burglary intruder alarm to ground floor and Lower Ground floor apartments
-----------------	--

Car Parking	<ul style="list-style-type: none"> On-site allocated car parking (some with electrical points)
--------------------	---

Heating and cooling	<ul style="list-style-type: none"> GSHP units within individual apartments providing heating and cooling Mechanical ventilation throughout the apartment
----------------------------	--

Peace of mind	<ul style="list-style-type: none"> 999 year lease All apartments benefit from a 10 year Premier Guarantee building warranty Lifts to apartment floors
----------------------	--

Homeowners' amenities	<ul style="list-style-type: none"> Communal lounge and kitchenette with large external terrace Landscaped gardens Onsite Lifehost (5 days a week) Guest suite Cage storage facilities (rentable) Buggy store
------------------------------	--

Our assurance to you

THE PEGASUS PROMISE

We at Pegasus are responsible for taking care of all the external building maintenance, buildings insurance and communal utility bills. We also ensure all the shared areas are meticulously cleaned and maintained. Our dedicated team of friendly and approachable Lifestops work to ensure the support provided is always tailored to owners' needs.

CONTACT

If you'd like to find out more about Lymington Gate and keep up with the latest news, please contact:

01590 615 288
lymington@lifestory.group
lifestory.group/lymington-gate

Stanford Hill
Lymington
SO41 8DE

Lymington Gate is available exclusively to those enjoying life over 60.

Important Notice: These details are intended to give a general indication of the proposed development and floor layouts and are believed to be correct at the time of printing. Pegasus and its subsidiary and associated companies with the Lifestory Group reserve the right to make any changes thought necessary to the development, individual specifications or floor layouts at any time. The content of this brochure does not constitute an offer or form any contract or an inducement of any such contract. All dimensions scaled from architect's drawings. Final dimensions may vary slightly.



LYMINGTON GATE

HAMPSHIRE