



Elliot Heath
ESTATE AGENTS

130 Crib Street, Ware
Guide Price **£185,000**

130 Crib Street

Ware, Ware

NEWLY EXTENDED LONG LEASE....Elliot Heath are delighted to offer this one bedroom ground floor maisonette situated within just a short walk of Ware High Street.

Council Tax band: B

Tenure: Leasehold

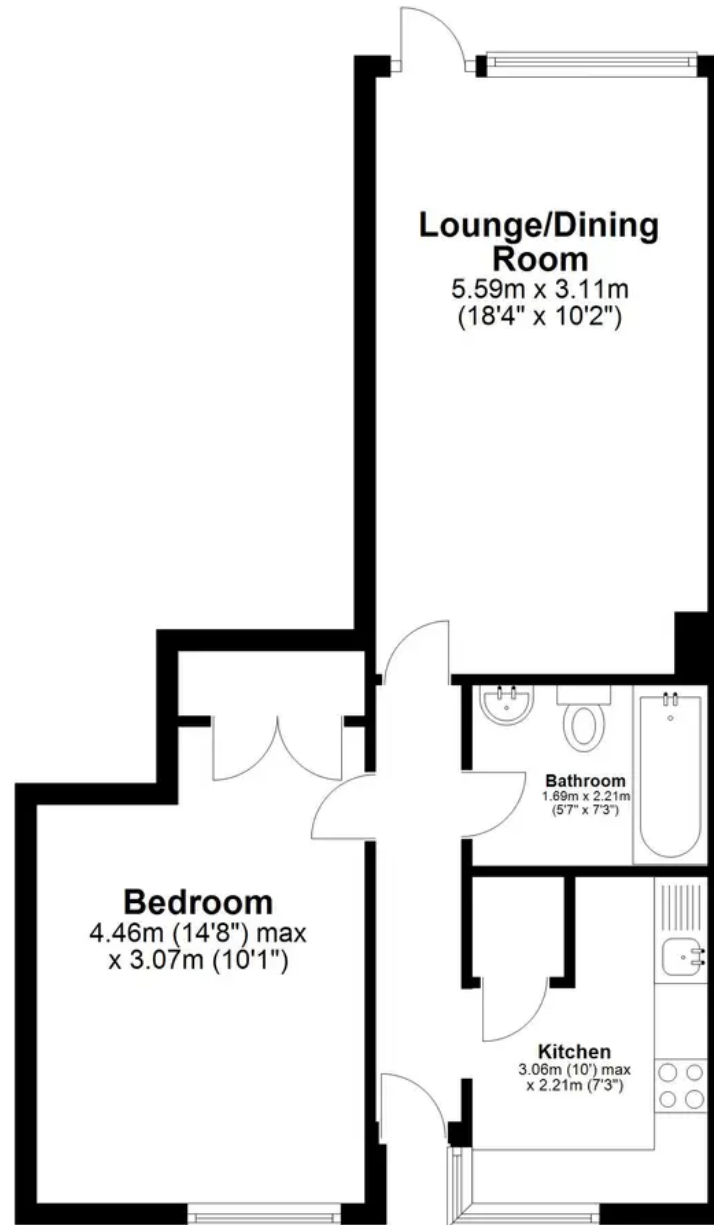
EPC Energy Efficiency Rating: E

EPC Environmental Impact Rating: D



Ground Floor

Approx. 46.5 sq. metres (500.3 sq. feet)



Total area: approx. 46.5 sq. metres (500.3 sq. feet)

Floor Plan measurements are approximate and are for illustrative purposes only.
Plan produced using PlanUp.

Accommodation

Private front entrance door to:

Entrance Hall

With doors to:

Kitchen

10' 0" x 7' 3" (3.05m x 2.21m)

With double glazed window to front aspect. Fitted with a range of wall and base storage units with work surfaces over incorporating a sink and drainer unit, appliance space, tiled splash back areas, tiled flooring.

Lounge/Dining Room

18' 4" x 10' 2" (5.59m x 3.10m)

With double glazed window and door opening onto the communal gardens.

Bedroom

14' 8" x 10' 1" (4.47m x 3.07m)

With double glazed window to front aspect, built in wardrobe cupboard.

Bathroom

Fitted with a suite comprising panel enclosed bath with shower over, pedestal wash hand basin, low flush wc, tiled splash back areas.

Agents Note

These particulars are issued on the understanding that all negotiations are conducted through Elliot Heath Estate Agents. Every care has been taken to ensure the accuracy of these particulars but such accuracy cannot be guaranteed and they are not to be taken as forming part of any contract. Elliot Heath have not tested any apparatus, equipment, fittings or services so cannot verify they are in working order and the buyer is advised to obtain verification from their solicitor or surveyor.



Accommodation

Private front entrance door to:

Entrance Hall

With doors to:

Kitchen

10' 0" x 7' 3" (3.05m x 2.21m)

With double glazed window to front aspect. Fitted with a range of wall and base storage units with work surfaces over incorporating a sink and drainer unit, appliance space, tiled splash back areas, tiled flooring.

Lounge/Dining Room

18' 4" x 10' 2" (5.59m x 3.10m)

With double glazed window and door opening onto the communal gardens.

Bedroom

14' 8" x 10' 1" (4.47m x 3.07m)

With double glazed window to front aspect, built in wardrobe cupboard.

Bathroom

Fitted with a suite comprising panel enclosed bath with shower over, pedestal wash hand basin, low flush wc, tiled splash back areas.

Agents Note

These particulars are issued on the understanding that all negotiations are conducted through Elliot Heath Estate Agents. Every care has been taken to ensure the accuracy of these particulars but such accuracy cannot be guaranteed and they are not to be taken as forming part of any contract. Elliot Heath have not tested any apparatus, equipment, fittings or services so cannot verify they are in working order and the buyer is advised to obtain verification from their solicitor or surveyor.



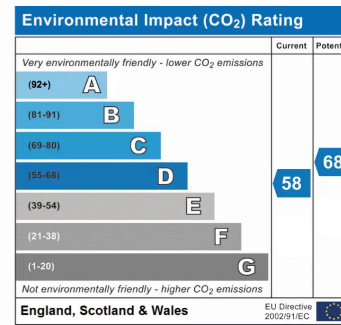
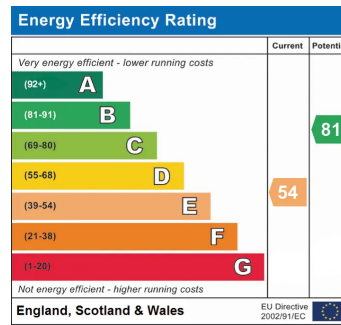


COMMUNAL GARDEN

Allocated parking space and communal gardens.

ALLOCATED PARKING

1 Parking Space





Elliot Heath Estate Agents

Elliot Heath Estate Agents, 7 Star Street - SG12 7AA

01920 29 33 33

hello@elliotheath.co.uk

elliotheath.co.uk