



6 Lotmead, Staverton

Trowbridge

Offers Over £300,000



Entrance Hall

Stairs to first floor, door to Lounge, under stairs storage, WC

Living Room

10' 6" x 18' 10" (3.19m x 5.75m)

Double glazed window to front and a double glazed double doors to rear

Kitchen / Diner

8' 8" x 18' 8" (2.65m x 5.70m)

Double glazed window to front and double glazed double doors to rear, tiled floor. Kitchen has range of wall and base units with work surface, space for white goods, 4 ring gas hob and oven, stainless steel sink unit with mixer tap

WC

Double glazed window to rear low level WC pedestal wash hand basin and tiled floor

Bedroom 1

12' 2" x 9' 8" (3.70m x 2.94m)

Double glazed window to front built-in wardrobe access to ensuite

Ensuite

Double glazed window to front, low WC, pedestal wash hand basin, single shower cubicle and tiled floor

Bedroom 2

9' 6" x 10' 8" (2.90m x 3.24m)

Double glazed window to front built-in storage cupboard

Bedroom 3

7' 4" x 9' 1" (2.24m x 2.76m)

Double glazed window to rear

Family Bathroom

Double glazed window to rear, panel bath with shower over, low level WC, pedestal wash hand basin tiled floor





FRONT GARDEN

Walled Garden with pathway to front door

REAR GARDEN

Laid to lawn with patio area, panel fence with side access

GARAGE

Single Garage

Up and over door

DRIVEWAY

1 Parking Space

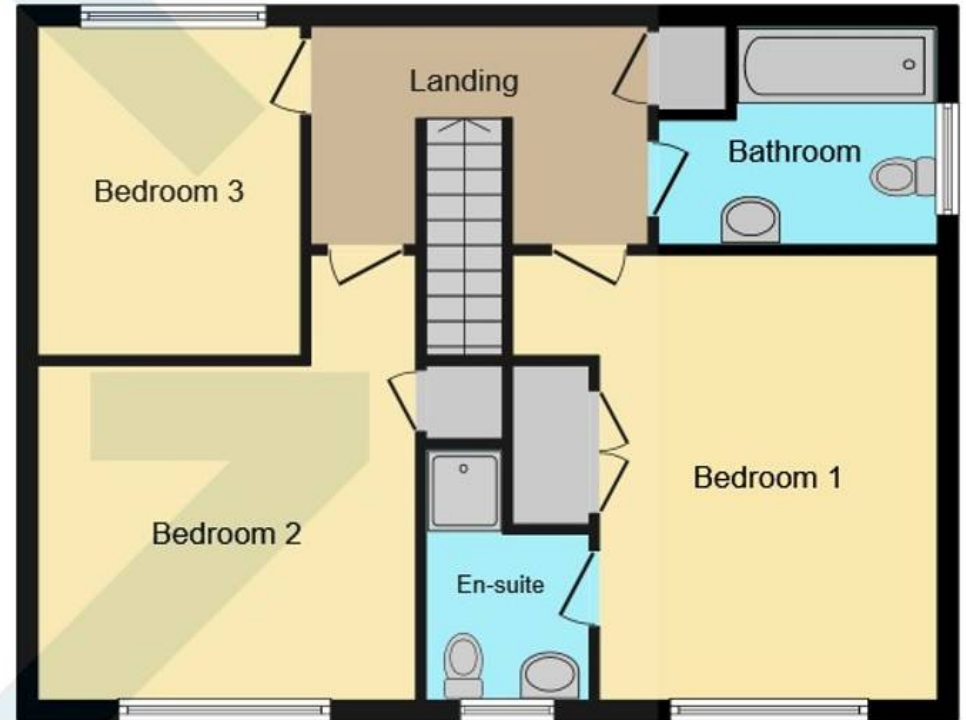
In front of garage







Ground Floor



First Floor

These details are a guide only - please check anything you need specifically.