



Notting Hill, London

Asking Price: £2,816 Per month

Located in a classic white stucco fronted building, this quaint and stylish 2 bedroom flat is in the heart of central London. Moments from both Kensington High Street and Notting Hill Gate tube stations, while in the centre of the action, it offers a quiet oasis with its own private garden.

This is a fully furnished flat with a spacious lounge, fitted kitchen and separate dining space in the conservatory with French doors leading to the garden. The master bedroom is newly decorated with a double bed, a chest of drawers and built-in wardrobes offering plenty of storage. The second bedroom is a single with views of the garden.

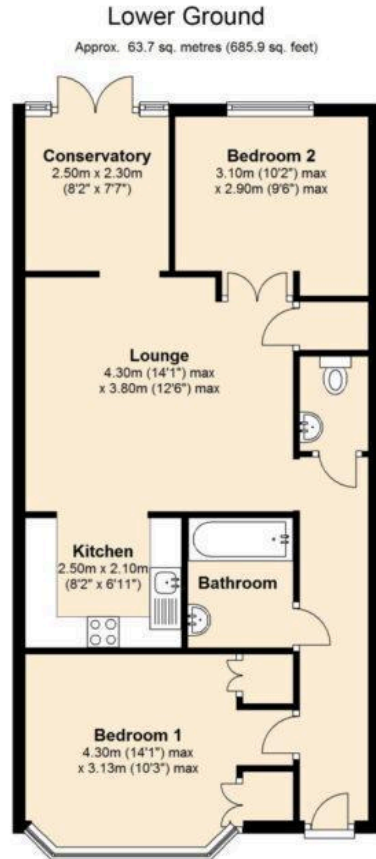
The flat has its own entrance providing direct access and privacy. The location couldn't be more ideal with endless shops, restaurants and cafes right outside your door. Charming throughout, you'll be happy to call this home.

Key Features

- 2 bedrooms
- Private garden/patio
- Conservatory
- Great location
- White stucco fronted building
- Separate entrance





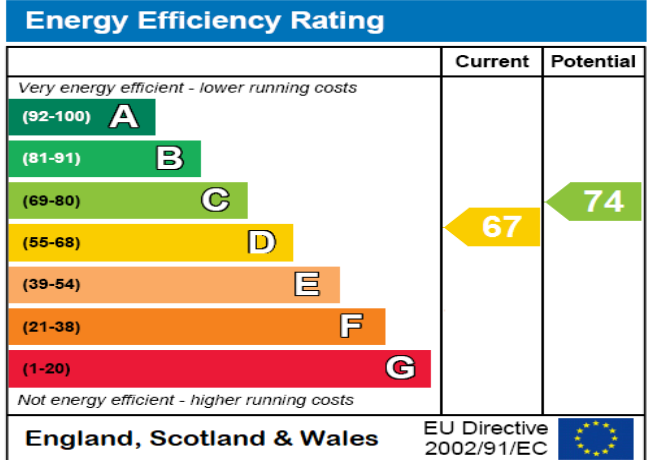


Total area: approx. 63.7 sq. metres (685.9 sq. feet)

This floor plan is for illustrative purposes only and is not to scale. Where measurements are shown, these are approximate and should not be relied upon. Total square area includes the entirety of the property and any outbuildings/garages. Sanitary ware and kitchen fittings are representative only and approximate to actual position, shape and style. No liability is accepted in respect of any consequential loss arising from the use of this plan. Reproduced under licence from Evolve Partnership Limited. All rights reserved.
Plan produced using PlanUp.

Energy Performance Certificate

The energy efficiency rating is a measure of the overall efficacy of a home. The higher the rating the more energy efficient the home is and the lower the fuel bills will be.



DISCLAIMER

These particulars are intended to give a fair and reliable description of the property but no responsibility for any inaccuracy or error can be accepted and do not constitute an offer or contract. We have not tested any services or appliances (including central heating if fitted) referred to in these particulars and the purchasers are advised to satisfy themselves as to the working order and condition. If a property is unoccupied at any time there may be reconnection charges for any switched off/disconnected or drained services or appliances - All measurements are approximate.