



Oxland Drive, Hull, HU8

Fixed Price £235,000

Council Tax Band D



Overlooks Woodland and Green...

On possibly the nicest plot on the development, this immaculate detached house has an enviable position at the end of a small cul-de-sac overlooking mature trees on the green opposite. Ideal for the family.

In pristine condition, at under 10 years old, it has 3 bedrooms with an ensuite to the master. It has been enhanced by the addition of a sun room to the rear, overlooking the sizeable plot. The welcoming hallway has been improved by a stunning glazed balustrade staircase, access leads off to the front facing lounge and cloakroom. The dual aspect dining kitchen is as new, with a range of integrated appliances including fridge/freezer and dishwasher. Gas central heating, security alarm system and uPVC double glazing are throughout.

Outside, the garden is enclosed and lawned, wrapping around the house. There is ample parking, both to the front and on the private driveway (with electric charging point) which in turn leads to the detached garage.

All in all an immaculate home in a superb position.

COUNCIL TAX BAND D.

- Outlook over Wooded Area
- Pristine Detached Family Home
- Ensuite to Master Bedroom
- Fully Fitted Kitchen with Integrated Appliances
- Security Alarm System
- Ample Parking and Garage

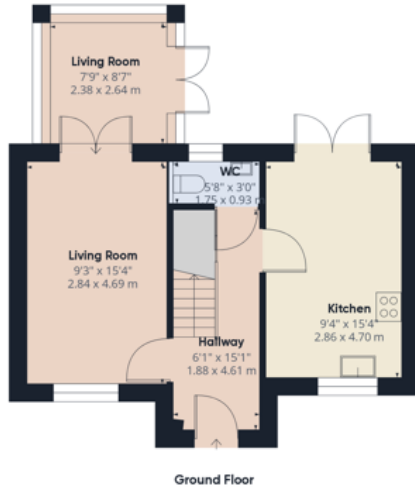
Rooms

Directions

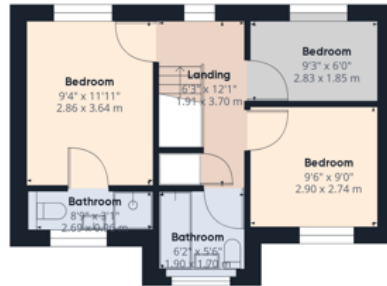
Agents Note







Ground Floor



Floor 1

Approximate total area⁸⁾
880.92 ft²
81.84 m²

Excluding balconies and terraces

While every attempt has been made to ensure accuracy, all measurements are approximate, not to scale. This floor plan is for illustrative purposes only.

GIRAFFE360

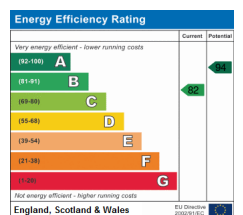
Lime Property (Hull Ltd)

Royal Mail Suburb KT13 8DE

Call: 01482 216060

Web: www.lime-property.co.uk

Email: info@lime-property.co.uk



Check your disclaimer in settings. Fic tempor apelenimpore laut odit eosam apicto officipic tem eaquund ele strupti sin non eligenduscid estur aut plitas ea porernatia volore sum fugia dio. Occum quam enimusamet a consequam re dest vollatur rehenturib ea dolum reperib usdanto blaniet aut as venim volorumet.