



Mills Bakery, Royal William Yard, Plymouth, PL1 3GD

£200,000 LEASEHOLD





Mills Bakery

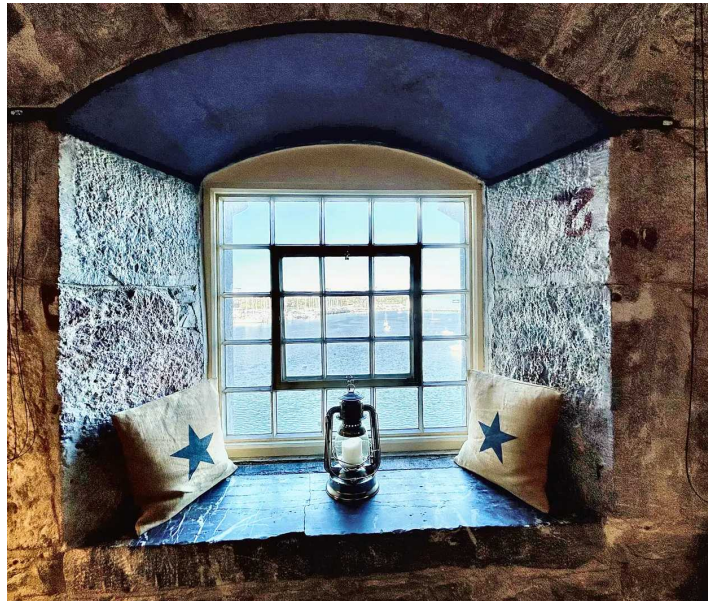
4 Royal William Yard, Plymouth, PL1 3GD

We are delighted to present this exquisite 1 bedroom apartment, located in the prestigious Grade 1 listed Royal William Yard. This property offers panoramic water views and is a true gem for those seeking elegance and tranquillity.

Council Tax band: B

Tenure: Leasehold

- No Onward Chain
- Spacious Open Plan Living Area
- Stunning Water Views
- Grade 1 Listed Royal William Yard
- Large Double Bedroom
- Fitted Kitchen with Integral Appliances
- Generous Size Shower Room
- Holiday Let Potential
- Bars and Restaurants within the Development



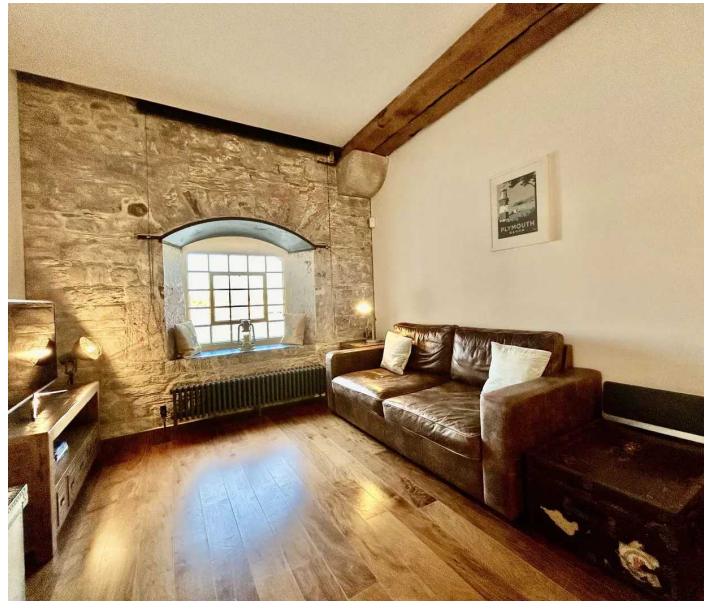
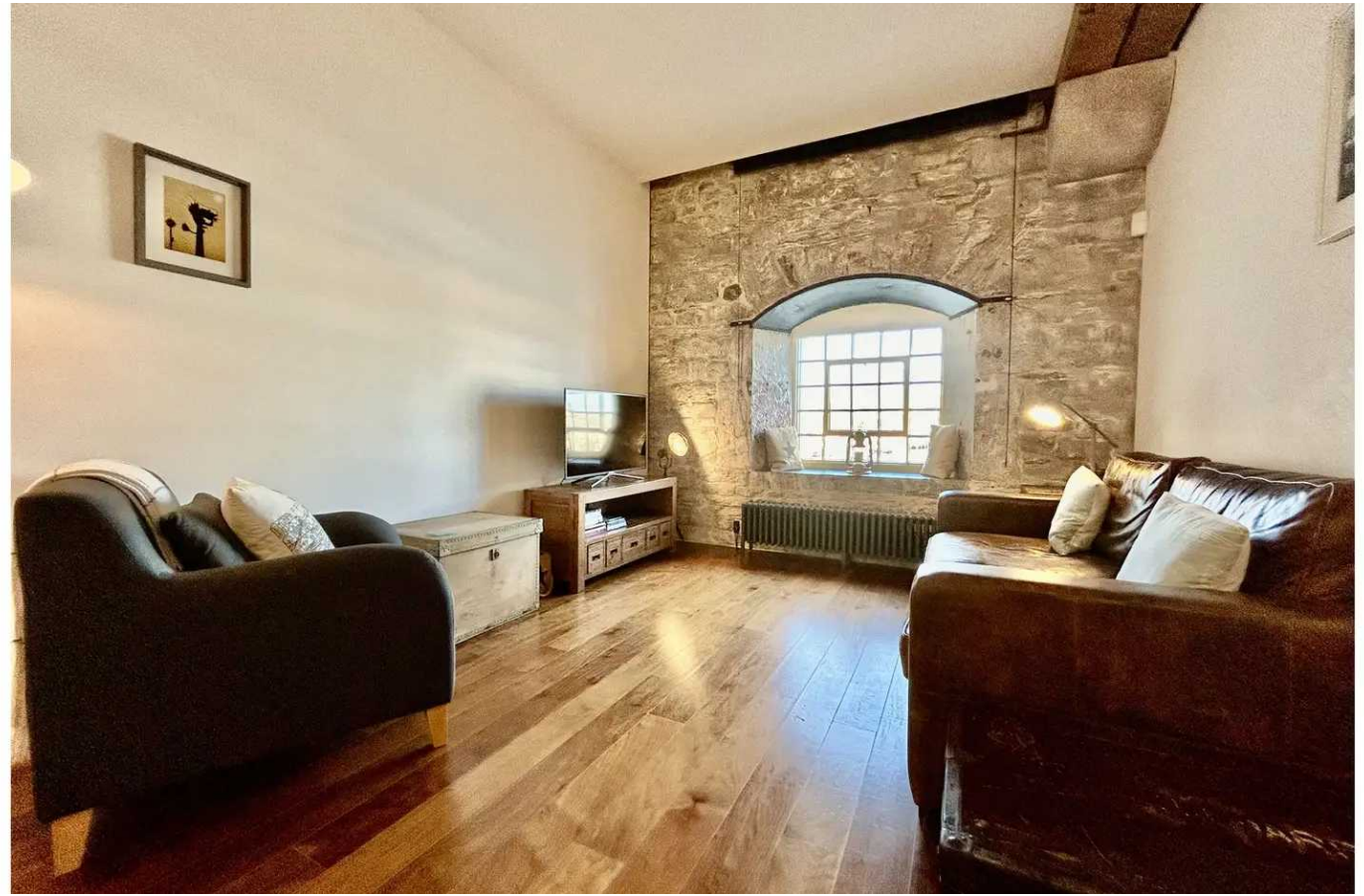
Mills Bakery

4 Royal William Yard, Plymouth, PL1 3GD

Upon entering the apartment, you are greeted by a generously sized open plan living area. The abundance of natural light streaming through the large window highlights the stunning water views, creating a serene atmosphere for relaxation. The spacious layout allows for versatile furniture arrangement, perfectly suited for both comfortable living and entertaining guests.

The large double bedroom offers ample space for storage and is tastefully decorated, providing a peaceful sanctuary for rest and rejuvenation. The modern fitted kitchen boasts integral appliances, ensuring convenience and practicality for the discerning chef. The generous size shower room is stylishly designed and exudes a sense of luxury.

This property presents an exceptional investment opportunity, with its potential for holiday letting. Its prime location within the Royal William Yard, a vibrant mixed-use development, ensures a consistent stream of potential tenants. The abundance of bars and restaurants within the development provides an array of dining options for both residents and visitors alike, making it an enticing draw for those seeking an enticing city lifestyle.



Mills Bakery

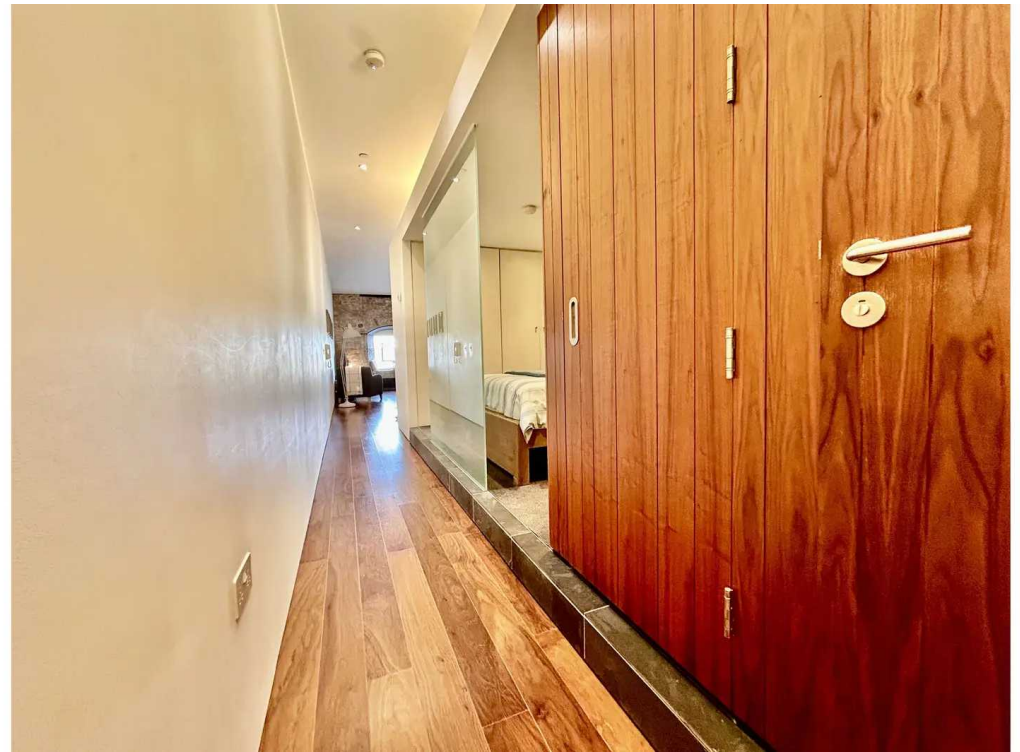
4 Royal William Yard, Plymouth, PL1 3GD

The Royal William Yard is renowned for its historic charm and architectural beauty. As a Grade 1 listed property, this apartment effortlessly combines modern design with timeless elegance. The blend of old and new is manifested in the meticulously maintained communal areas, further enhancing the appeal of the property.

Residents of this exclusive development benefit from a range of amenities and services, including secure entry, lift access, and permit parking. Additionally, the location offers convenient access to nearby transportation links, ensuring ease of travel to Plymouth city centre and beyond.

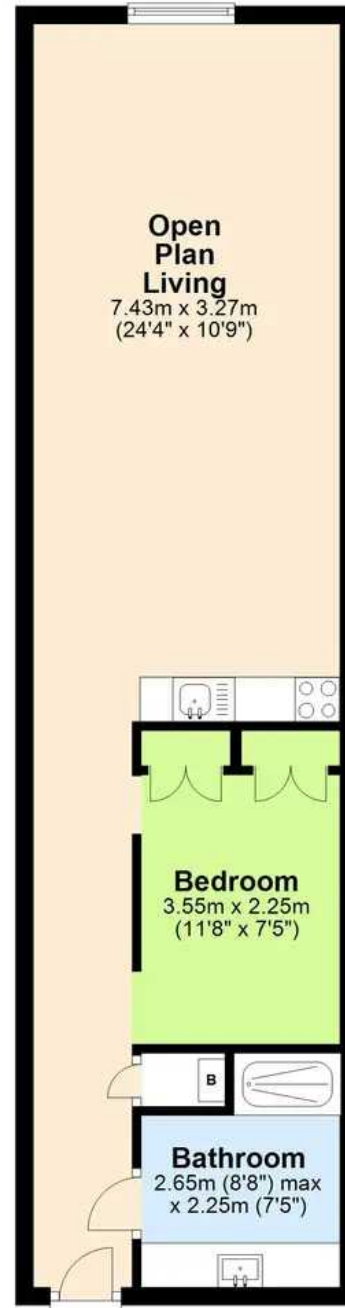
In summary, this 1 bedroom apartment in the Grade 1 listed Royal William Yard is a truly exceptional property with stunning water views. It presents a unique investment opportunity due to its potential for holiday letting. With its spacious open plan living area, large double bedroom and modern amenities, this property effortlessly combines style and comfort. The bars and restaurants within the development further add to the allure of this prime location, allowing residents to enjoy the vibrant atmosphere.





Second Floor

Approx. 46.7 sq. metres (502.2 sq. feet)



Total area: approx. 46.7 sq. metres (502.2 sq. feet)



Atwell Martin

Atwell Martin, 65 Southside Street - PL1 2LA

01752 202121

plymouthsales@atwell-martin.co.uk

plymouth.atwellmartin.co.uk/

Atwell Martin Plymouth endeavour to ensure the accuracy of property details produced and displayed. Please note that we have not tested any apparatus, equipment, fixtures, fittings or services and so cannot verify that they are connected, in working order or fit for purpose. It is imperative that the buyer of any property makes such checks, prior to purchase so as to satisfy themselves of the properties suitability for their purchase. .