

- Stunning newly refurbished four bedroom Regency town house
- Accommodation arranged over four floors
- Two bathrooms one of which is an en-suite
- Rear Patio and balcony
- Chain Free

Clifton Hill, Brighton, BN1 3HQ

Guide Price £900,000 - £925,000

An absolutely stunning newly refurbished four bedroom regency town house located in one of Brighton's most prestigious locations. The property has four bedrooms, modern fitted kitchen, two stunning bathrooms, rear patio garden and a delightful sitting room with a front facing balcony. This property really does have the wow factor and you will want to view this to avoid missing out.



Property Description

Upon entering the property, you are greeted by a beautifully designed interior that has been tastefully renovated to a high standard. The attention to detail is evident throughout, with modern finishes and fixtures that perfectly blend with the regency architecture.

The property features two stunning bathrooms, one of which is an ensuite, providing convenience and luxury for the residents. The bathrooms have been fully fitted with modern amenities, creating a spa-like atmosphere.

The fully fitted modern kitchen is a highlight of this property. It is equipped with state-of-the-art appliances, ample storage space, and sleek countertops. The kitchen is not only functional but also aesthetically pleasing, making it a perfect space for culinary enthusiasts.

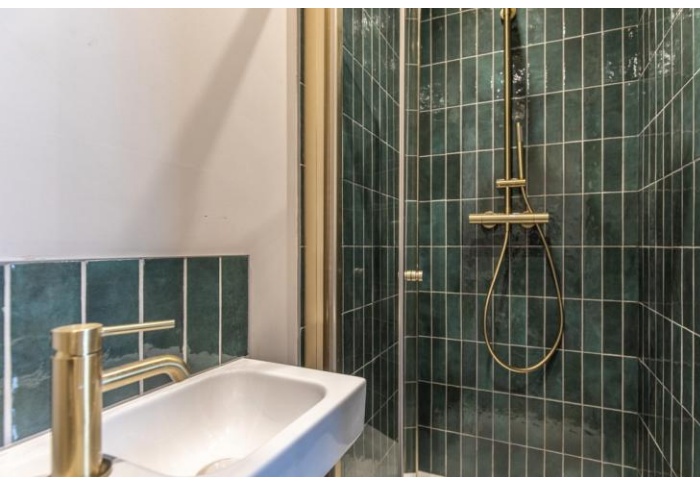
In addition to the four bedrooms, the property boasts an extra study room, providing a dedicated space for work or personal projects. The study room offers privacy and tranquility, allowing for focused productivity.

Another desirable feature of this property is the walk-in wardrobe, providing ample storage for clothing and accessories. This convenient addition helps to keep the bedrooms clutter-free and organized.

The property also offers a small rear patio, providing a private outdoor space for relaxation or entertaining guests. Additionally, a balcony off the sitting room offers a charming area to enjoy the views and fresh air.

Being sold chain-free, this property presents an excellent opportunity for potential buyers. Its location in the Clifton Hill conservation area adds to its appeal, as it is known for its charming regency architecture and proximity to Brighton station.

Overall, this stunning regency townhouse offers a perfect blend of modern luxury and regal charm. With its spacious accommodation, two stunning bathrooms, fully fitted modern kitchen, additional study room, walk-in wardrobe, small rear patio, and balcony off the sitting room, this property is sure to impress even the most discerning buyer.



Accommodation

GROUND FLOOR

ENTRANCE HALL

STUDY

12' 8" x 7' 11" (3.86m x 2.41m)

KITCHEN

17' x 11' 5" (5.18m x 3.48m)

FIRST FLOOR

SITTING ROOM

12' 6" x 11' 11" (3.81m x 3.63m)

BATHROOM

BEDROOM FOUR

11' 6" x 7' 10" (3.51m x 2.39m)

SECOND FLOOR

BEDROOM THREE

12' 6" x 12' 2" (3.81m x 3.71m)

MASTER BEDROOM

14' 1" x 11' 7" (4.29m x 3.53m)

ENSUITE SHOWER ROOM

THIRD FLOOR

BEDROOM TWO

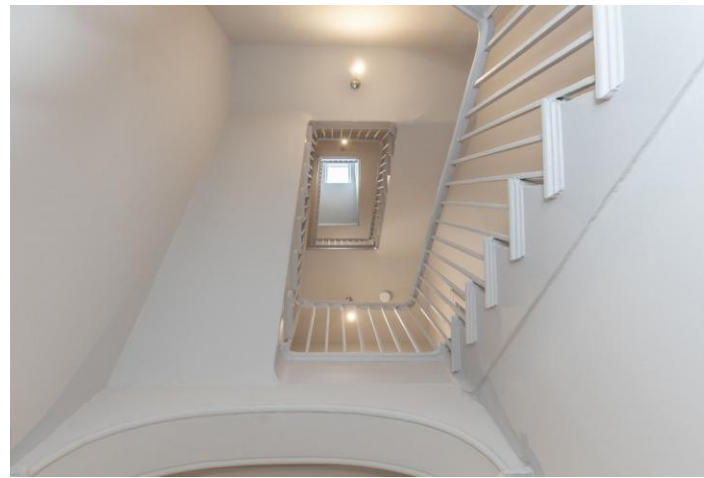
17' 8" x 7' 7" (5.38m x 2.31m)

STORE ROOM/ WALK IN WARDROBE

8' 1" x 7' 7" (2.46m x 2.31m)

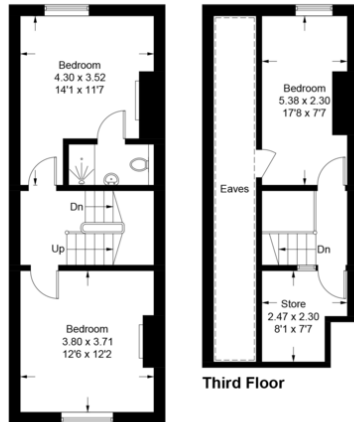
OUTSIDE

REAR PATIO GARDEN



Clifton Hill, Brighton, BN1 3HQ

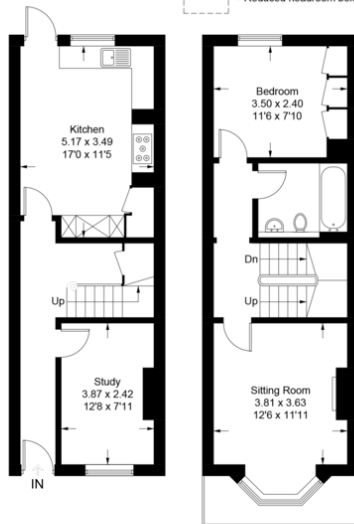
Approximate Gross Internal Area = 153.6 sq m / 1653 sq ft
(Including Eaves)



Second Floor

Third Floor

= Reduced headroom below 1.5m / 5'0"



Ground Floor

First Floor

Illustration for identification purposes only, measurements are approximate, not to scale.
Imageplansurveys @ 2023



112 Western Road
Brighton
East Sussex
BN1 2AB

www.phillipsandstill.co.uk
01273 771111
westernrd@phillipsandstill.co.uk

Mon-Fri: 8.30am - 6pm
Sat-Sun: 9am - 5pm

