

GUIDE PRICE  
**£152,500 (25% shared ownership)**  
**Orbis Wharf**  
London, SW11 3GW

## PROPERTY SUMMARY

\*Shared Ownership (25%)\*

A well proportioned two bedroom apartment set on the fourth floor of this riverside development. This welcoming property offers over 800 sq ft of accommodation comprising two bedrooms, one bathroom and a social open reception room with a well appointed open plan kitchen. Further benefits include two private balconies, partial river views and secure allocated parking for one car.

2



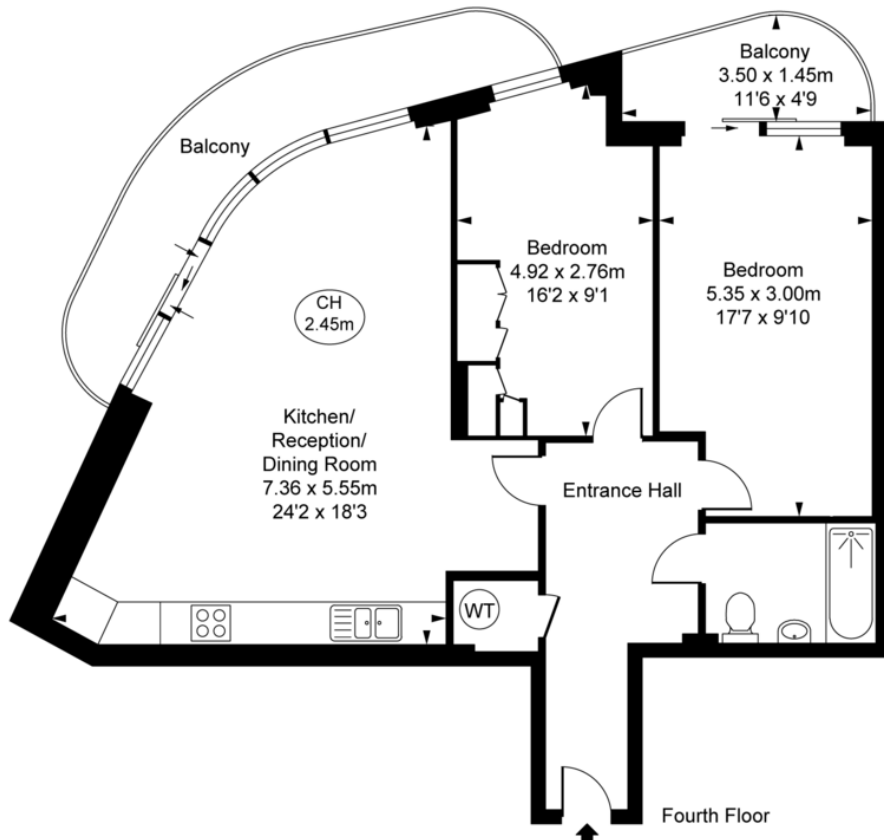
1



1







Orbis Wharf,  
Bridges Court Road, SW11  
Approximate Gross Internal Area  
76.09 sq m / 819 sq ft

( CH = Ceiling Heights )



This plan is not to scale. It is for guidance and not for valuation purposes.  
All measurements and areas are approximate only, and have been prepared in accordance with the current edition of the RICS Code of Measuring Practice.  
© Fulham Performance

**LOCAL AUTHORITY**  
Wandsworth Borough Council

**TENURE**  
Leasehold

**COUNCIL TAX BAND**  
Band E

**VIEWINGS**  
By prior appointment only

Energy Efficiency Rating		Current	Potential
Very energy efficient - lower running costs			
(92-100)	<b>A</b>		
(81-91)	<b>B</b>		
(69-80)	<b>C</b>	73	74
(55-68)	<b>D</b>		
(39-54)	<b>E</b>		
	<b>F</b>		
	<b>G</b>		

Agents Note: Whilst every care has been taken to prepare these particulars, they are for guidance purposes only. All measurements are approximate and are for general guidance purposes only and whilst every care has been taken to ensure their accuracy, they should not be relied upon and potential buyers/tenants are advised to check the measurements.

England, Scotland & Wales EU Directive 2002/91/EC



4 Vicentia Court  
Bridges Wharf  
London  
SW11 3GY

02073522455  
info@hgproperty.co.uk  
www.hgproperty.co.uk