



Lower Olland Street, Bungay

£750 pcm - Tenancy Info

Energy Efficiency Rating : D

- ✓ Grade II Listed Mid-Terrace Cottage
- ✓ Town Centre Location
- ✓ Two Receptions & Separate Kitchen
- ✓ Two Double Bedrooms & Study
- ✓ Bathroom & Downstairs Cloakroom
- ✓ Private Gardens to Rear
- ✓ Period Features Retained
- ✓ On Road Parking

Room

To arrange an accompanied viewing please call our Centralised Hub on 01603 336116

**STARKINGS
&
WATSON**



IN SUMMARY

This CHARACTERFUL GRADE II LISTED MID-TERRACE COTTAGE positioned within the HEART of BUNGAY offers more accommodation than expected - extending to almost 900 SQ. FT internally (stms) as well as PRIVATE REAR GARDENS. The cottage comprises an entrance lobby leading to the front sitting room with feature fireplace. There is a dining room beyond leading to the galley style kitchen with downstairs cloakroom in addition. On the first floor you will find TWO DOUBLE BEDROOMS and a THIRD STUDY ROOM as well as the family bathroom. Externally leading from the shared passageway to the rear there is a GENEROUS COURTYARD STYLE private garden.

SETTING THE SCENE

Approached from Lower Olland Street with main entrance door leading to a small entrance lobby at the front. To the side there is a secure passage shared with the neighbour leading to the rear and another access via the kitchen.

THE GRAND TOUR

Entering the cottage from the main entrance door to the front you will enter an entrance lobby with storage cupboard and space for coats and shoes. This opens into the main sitting room to the front offering built-in storage and an open fireplace. The dining room can be found beyond with stairs leading to the first floor landing. The kitchen is adjacent offering ample storage cupboards with rolled edge work surfaces over and space for a range of

white goods. Past the kitchen is a small rear lobby with space for coats and shoes and a door leading to the rear passageway. Off the lobby there is a downstairs W.C with countertop space and a wall mounted boiler. Leading up to the first floor landing you will find all rooms accessed from the landing and the loft hatch access. The main bedroom is found to the front with built-in storage. The family bathroom offers a separate bath and shower and adjacent there is a study/bedroom. To the rear you will find the other double bedroom overlooking the garden again with built in storage.

THE GREAT OUTDOORS

Leading from the kitchen to the rear of the cottage there is a door out to the shared passageway which is hard standing and secure. There is a gate leading from the passage to the private hard standing courtyard style garden which is larger than expected. Within the courtyard garden there are various raised planted borders and mature shrubs as well as a timber built summer house. The rear garden is private and fully enclosed with timber fencing.

OUT & ABOUT

The property is situated at the heart of the quaint market town of Bungay, a short walk from the high street, where you find an extensive range of amenities including doctors, schooling, dentist, opticians, shops and restaurants. The City of Norwich to the North is about a 30 min drive away with a mainline train link to London Liverpool Street. The market town of Diss is about 19

miles away and provides further amenities and benefits from a mainline link to London.

FIND US

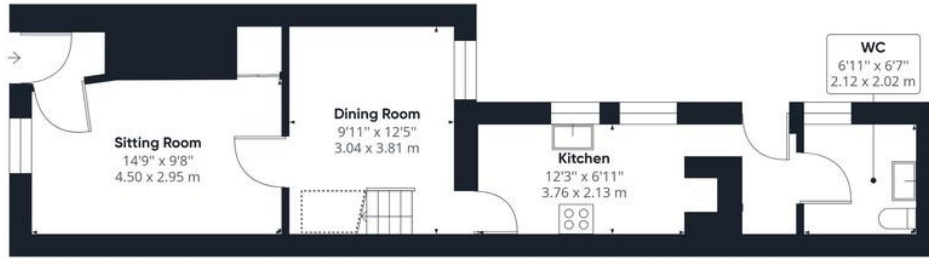
Postcode : NR35 1BY

What3Words : ///mandolin.vowed.remarried

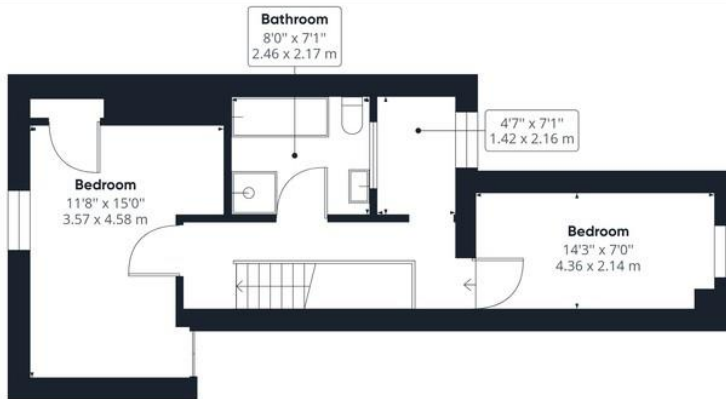
VIRTUAL TOUR

View our virtual tour for a full 360 degree of the interior of the property.





Ground Floor



Floor 1

Approximate total area⁽¹⁾
873.38 ft²
81.14 m²

Reduced headroom
14.57 ft²
1.35 m²

(1) Excluding balconies and terraces

Reduced headroom
(below 1.5m/4.92ft)

While every attempt has been made to ensure accuracy, all measurements are approximate, not to scale. This floor plan is for illustrative purposes only.

GIRAFFE360

Agents Note: Whilst every care has been taken to prepare these sales particulars, they are for guidance purposes only. All measurements are approximate are for general guidance purposes only and whilst every care has been taken to ensure their accuracy, they should not be relied upon and potential buyers are advised to recheck the measurements