



6 Osier Close, Scarning

Guide Price £220,000

6 Osier Close

Scarning, Dereham

GUIDE PRICE £220,000 - £240,000 Welcome to this thoughtfully designed three-bedroom property offering a perfect blend of comfort and modern living. The charming wooden-themed kitchen, versatile reception room and spacious living/dining area with sliding doors seamlessly connect indoor and outdoor spaces. With three great-sized bedrooms, a modern shower room and a good-sized garden with both lawn and patio areas, this home provides an ideal setting for comfortable family living, complemented by ample off-road parking for convenience.

Tenure: Freehold

EPC Energy Efficiency Rating: C

EPC Environmental Impact Rating:





6 Osier Close

Scarning, Dereham

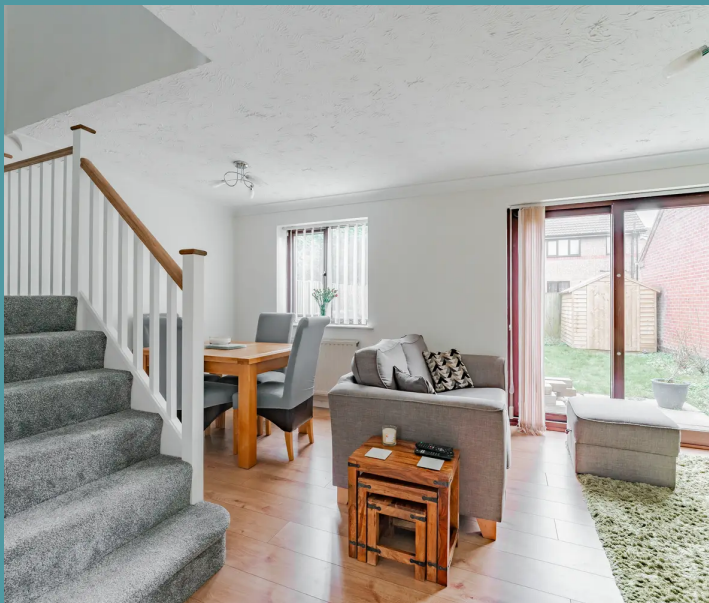
GUIDE PRICE £220,000 - £240,000 Welcome to this thoughtfully designed three-bedroom property offering a perfect blend of comfort and modern living. The charming wooden-themed kitchen, versatile reception room and spacious living/dining area with sliding doors seamlessly connect indoor and outdoor spaces. With three great-sized bedrooms, a modern shower room and a good-sized garden with both lawn and patio areas, this home provides an ideal setting for comfortable family living, complemented by ample off-road parking for convenience.

LOCATION

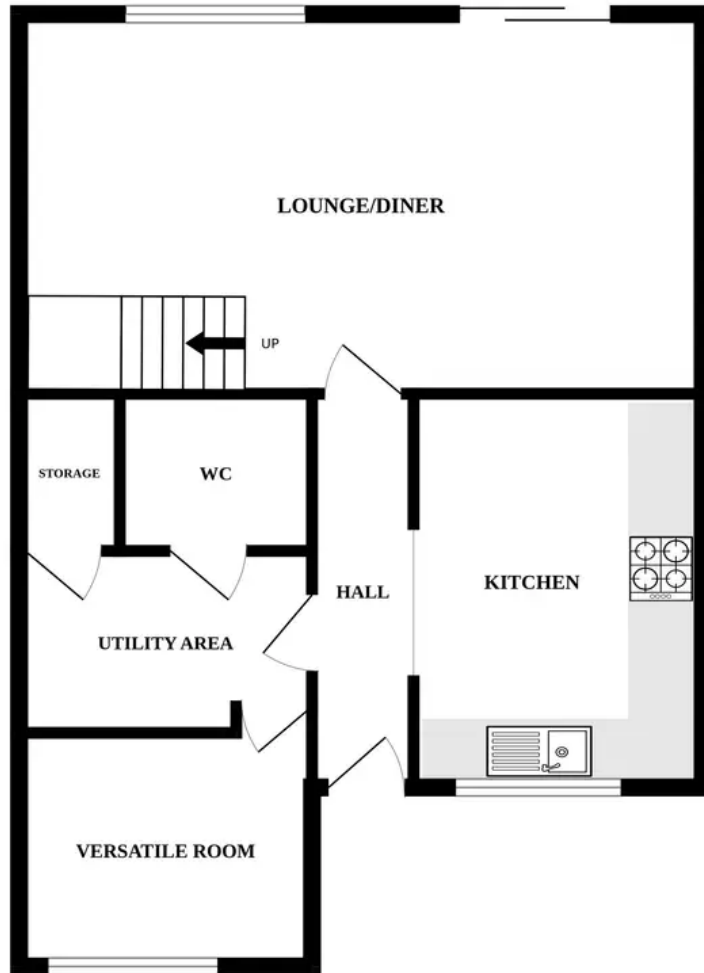
Nestled in the sought-after locale of Osier Close, Scarning, this property enjoys an ideal location with seamless access to vital amenities. The property is a 15-minute walk to the town centre via the scenic Scarning water meadow, alongside situated with easy connectivity onto the A47, residents benefit from convenient transportation links, facilitating effortless travel to nearby towns and cities. Perfectly positioned for families, the property boasts an ideal catchment area for schools, ensuring that educational facilities are within reach for children. Embrace the convenience of a well-connected and family-friendly community in this desirable Scarning neighbourhood.

THE PROPERTY

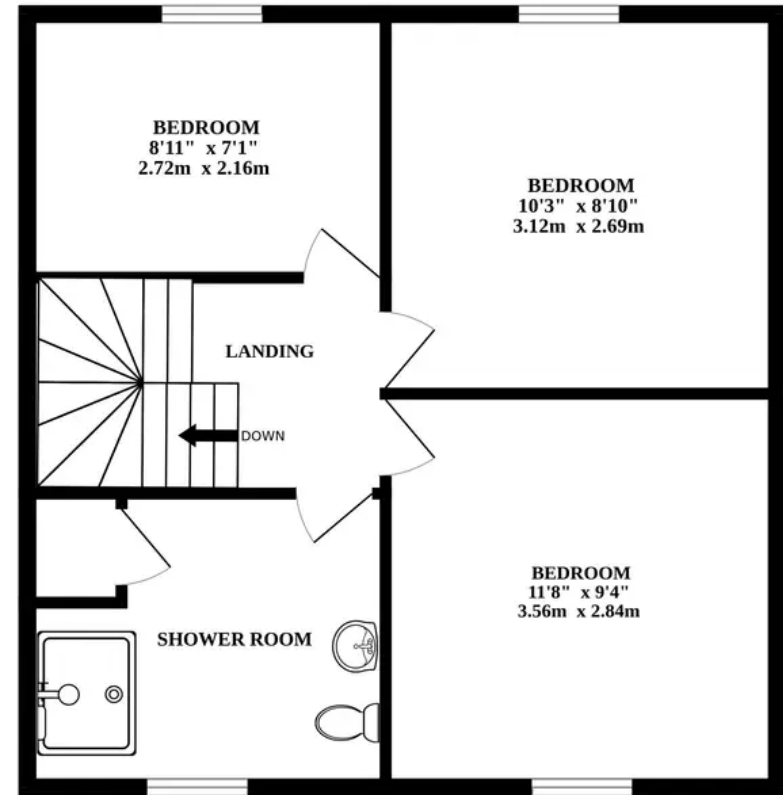
Welcome to this spacious and thoughtfully designed three-bedroom property offering a perfect blend of comfort and modern living. As you



GROUND FLOOR



1ST FLOOR



Whilst every attempt has been made to ensure the accuracy of the floorplan contained here, measurements of doors, windows, rooms and any other items are approximate and no responsibility is taken for any error, omission or mis-statement. This plan is for illustrative purposes only and should be used as such by any prospective purchaser. The services, systems and appliances shown have not been tested and no guarantee as to their operability or efficiency can be given.
Made with Metropix ©2024