



21 Lyarthall, Broxburn

Offers Over £142,000



21 Lyarthall

Broxburn, Broxburn

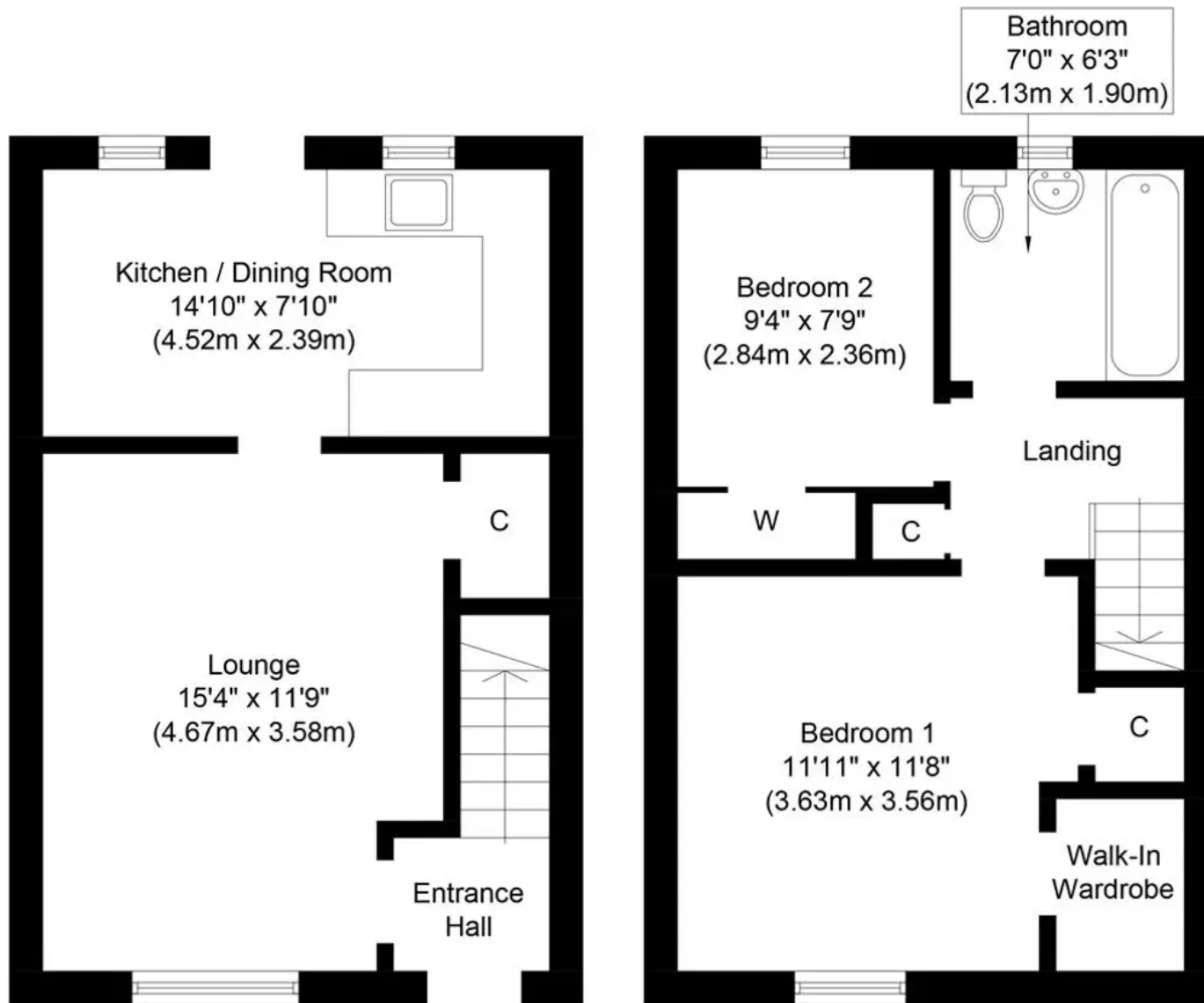
Bright, spacious terraced home with a south facing rear garden and driveway, close to schools. Features include a lounge, dining kitchen, 2 bedrooms with storage, and a family bathroom. Early viewing recommended.

Council Tax band: B

Tenure: Freehold

- Two Bedroom Mid Terraced House
- Enclosed South Facing Rear Garden
- Ideal Starter Home or Investor Buy To Let
- Close to Local Amenities
- Kitchen / Diner
- Private Driveway
- Abundance of Storage
- Popular Residential Area
- Good Transport Links
- Council Tax Band B, EPC = C





Ground Floor
Approximate Floor Area
353 Sq. ft.
(32.8 Sq. m.)

First Floor
Approximate Floor Area
353 Sq. ft.
(32.8 Sq. m.)

Whilst every attempt has been made to ensure the accuracy of the floor plan contained here, measurements of doors, windows, rooms and any other items are approximate and no responsibility is taken for any error, omission, or mis-statement. This plan is for illustrative purposes only and should be used as such by any prospective purchaser or tenant. The services, systems and appliances shown have not been tested and no guarantee as to their operability or efficiency can be given.



KnightBain Estate Agents

Knightsbain, 4 Greendykes Road, Broxburn - EH52 5AG

01506 852000

info@knightbain.co.uk

www.knightbain.co.uk/

