

BANKSIDE

# Triptych

LONDON SE1

[triptychbankside.com](http://triptychbankside.com)





# Triptych

*/ˈtrip.tɪk/*

A set of three associated artistic, literary, or musical works intended to be appreciated together.

Set in the heart of London's vibrant cultural quarter, Triptych Bankside is ideally located in one of the most sought-after districts for businesses, visitors, and residents alike.

A new mixed-use development designed by renowned London architects Squire & Partners, the undulating curves of the façade present a fresh and distinct contrast to the homogeneous silhouette of symmetric towers marking London's skyline.

Comprising offices, residential, retail and cultural facilities, Triptych Bankside represents the best that Southbank has to offer. This new landmark destination is tailored to meet the needs of a thriving and diverse community.



Computer Generated Image of Triptych Bankside



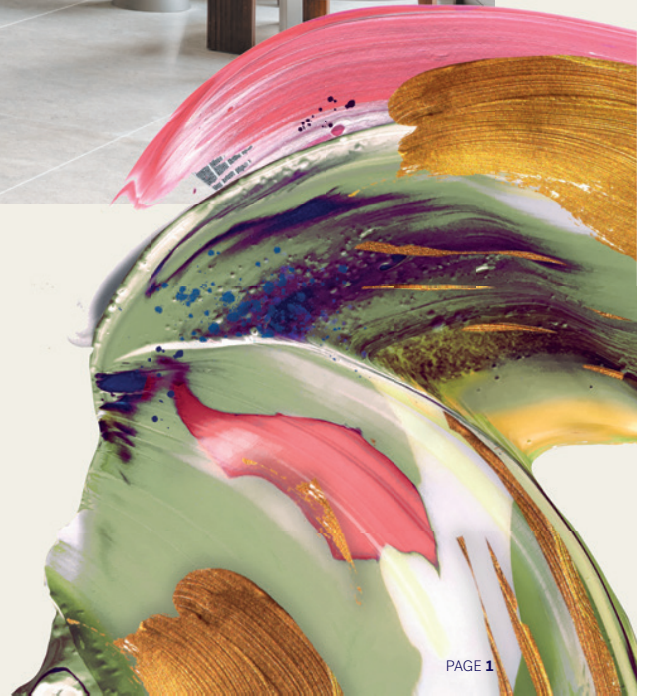


Photography of Triptych Bankside residential reception

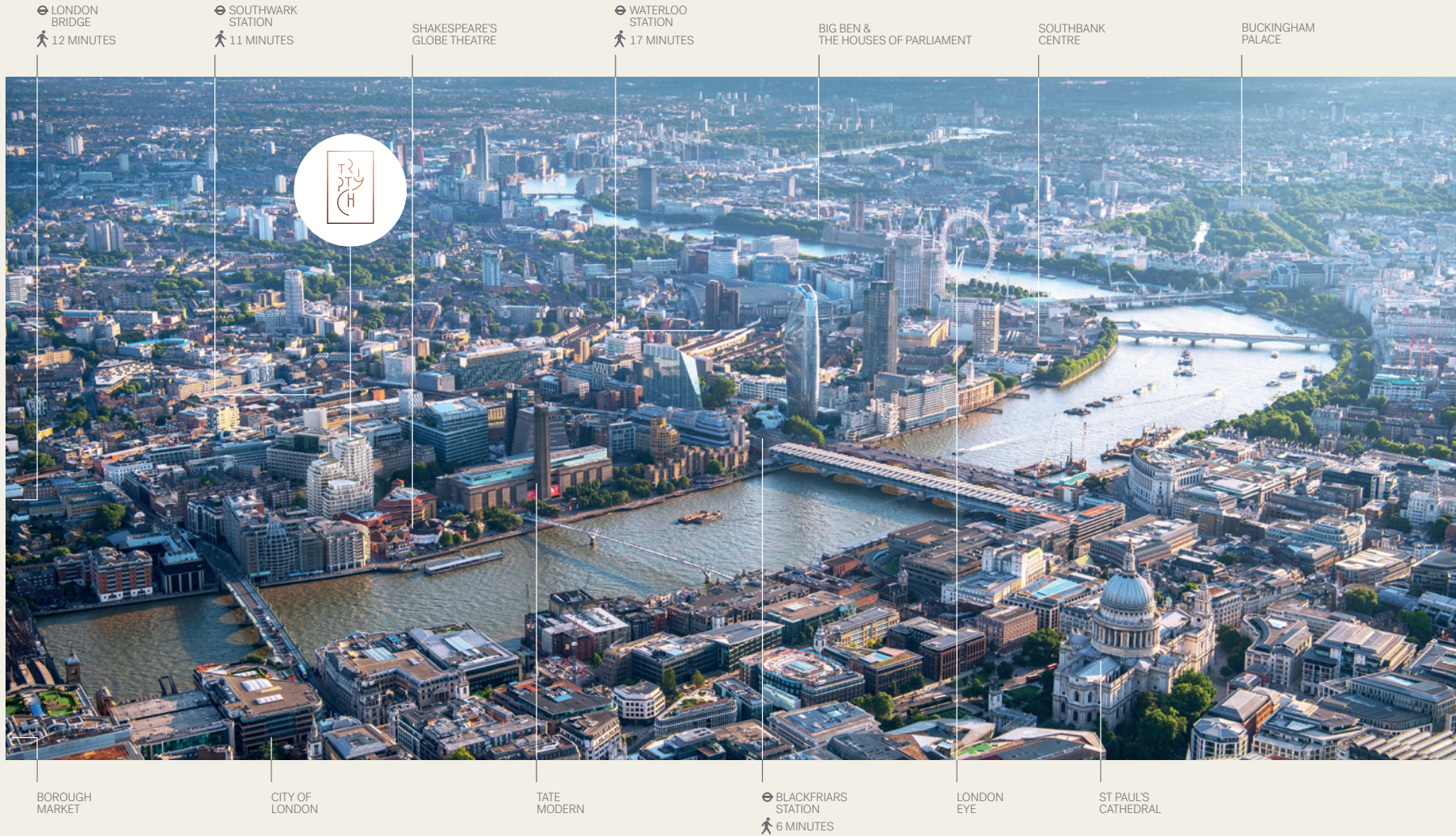
## Welcome to Triptych Bankside

Comprising two sweeping residential towers designed by internationally acclaimed London architects Squire & Partners, Triptych Bankside is a luxury architectural destination on the vibrant Southbank.

The residences consist of two towers, 14 and 18 storeys respectively. All 169 open-plan, light-filled apartments uniquely benefit from private terraces with stunning views and exclusive access to luxurious amenities.







# Location

Triptych Banksides Thameside location is within walking distance to central London's many landmarks and well connected to the capital's transport network.

Relish the scenic route into the City of London via the famous Millennium Bridge, or enjoy a leisurely stroll around the iconic South Bank adjacent to the historic River Thames. Alternatively, key transport hubs are only moments away and offer excellent connectivity via bus, London Underground or National Rail. Centrally located, the city's pulse is at your fingertips.





Coppia Club, Thameside



View of Tate Modern from the Thames



Tate Modern, Shakespeare's Globe Theatre



Bread Ahead, Borough Market

## Lifestyle

Immerse yourself in the rich history of this thriving area, filled with world-renowned landmarks and attractions. The illustrious Tate Modern Gallery and the iconic home of Shakespeare's Globe Theatre are literally on your doorstep.

A complete urban quarter, Triptych Bankside offers a variety of high-end retail and food destinations handpicked for their individuality and originality.

Venture out, and you will find surrounding Bankside is a gastronomic district in its own right, host to an exotic mix of food and drink experiences only a stone's throw away. With the much loved Borough Market—London's famous organic food market—only ten minutes on foot.





Photography of Triptych Bankside

## Triptych Bankside is the latest piece in the regeneration of London's Bankside

From Neo Bankside in the West, through to the Tate Modern and the Blue Fin building, Triptych Bankside book-ends this popular and multi-faceted hotspot.

### Reasons to Invest at Triptych Bankside

- Prime Central London location
- Excellent transport links
- The cultural and gastronomic heart of London
- Close proximity to top London Universities
- 13.5% projected Capital Appreciation in 5 years\*
- Up to 4% Rental Yield\*\*
- An area of high rental demand

\*Savills Research. \*\*Estimated Rental Yields Savills March 2023



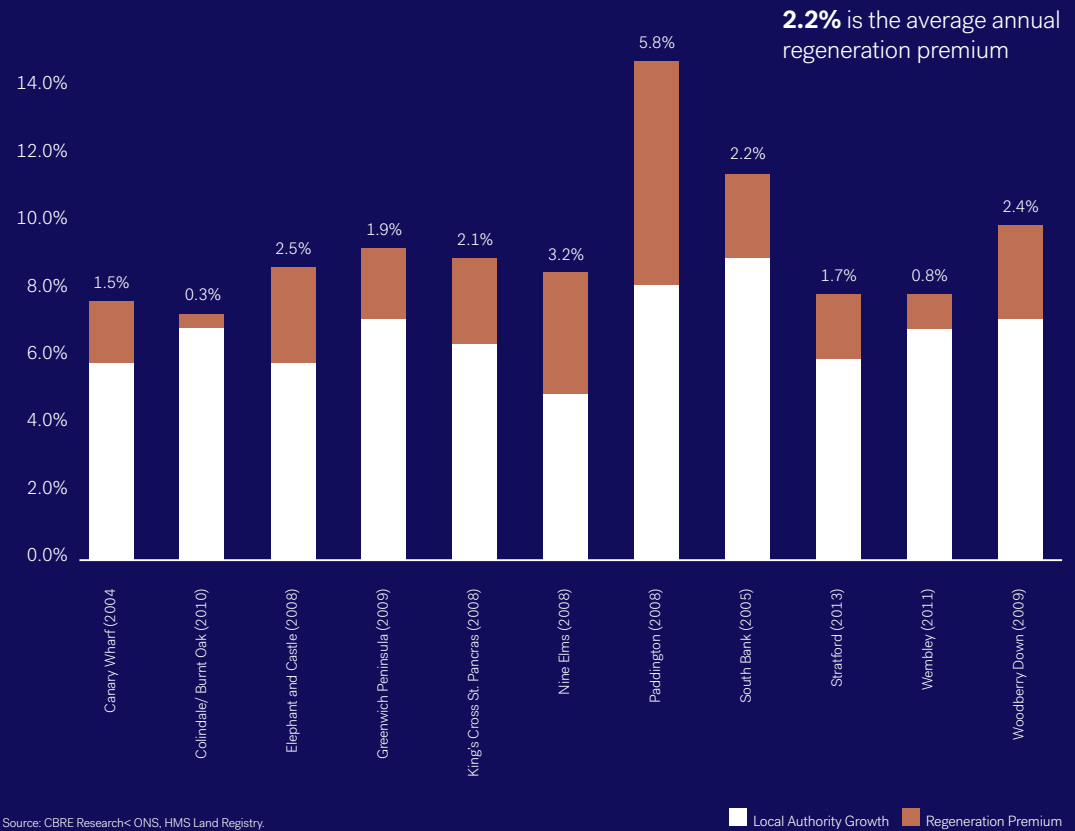


## An area full of opportunity

Historically overshadowed by the North Bank and City, Bankside and Southbank has benefited from significant regeneration over the last 20 years becoming an enviable residential location to live. Following the improved connectivity of the neighbourhood, the area is now popular with high earning young professionals and students alike; Southbank was also named as having the third 'coolest street' in the world according to TimeOut 2021. Bankside and Southbank is in high demand from prospective buyers and tenants and with an undersupply of new homes, house prices should continue to see strong price and rental growth.

## London's second most successful regeneration

Annual growth rates of regeneration zones, from start of regeneration to September 2022





# 5 year forecast

## PRIME SALES FORECAST

Prime central London	2023	2024	2025	2026	2027	5-year compound to 2027
	-2.0%	2.0%	5.0%	4.0%	4.0%	13.5%

## PRIME RENTAL FORECASTS

Prime London	2023	2024	2025	2026	2027	5-year compound to 2027
	5.0%	3.0%	2.0%	1.5%	1.5%	13.6%

Source: Savills Research

## A home to business

Nestled along the bank of the River Thames, overlooking the sky scrapers of the City of London and tucked between London Bridge and the Southbank, Bankside's fantastic connections and vibrant cultural make it the perfect place to do business. It is easy to see why an impressive roster of businesses call Bankside their home. Local office occupiers include: Informa Markets, IBM, HSBC, Matches Fashion, Kraft Heinz, Campari Group, HCA Healthcare and the AA, just to name a few. Positioned in One Triptych Place, the commercial building at Triptych Place, an eclectic mix of business have chosen Bankside to be their new home, including Haleon, Corgan, Quarto and Everyone TV.





*“Rental growth for prime properties in London reached 14.0% in the year to September 2022 - the highest growth since Savills index records began in 1979.”*

Savills

SEE GREAT ART FROM AROUND THE WORLD





Photography of Triptych Bankside Lounge & Business Suite



Photography of Triptych Bankside Cinema

## First class amenities

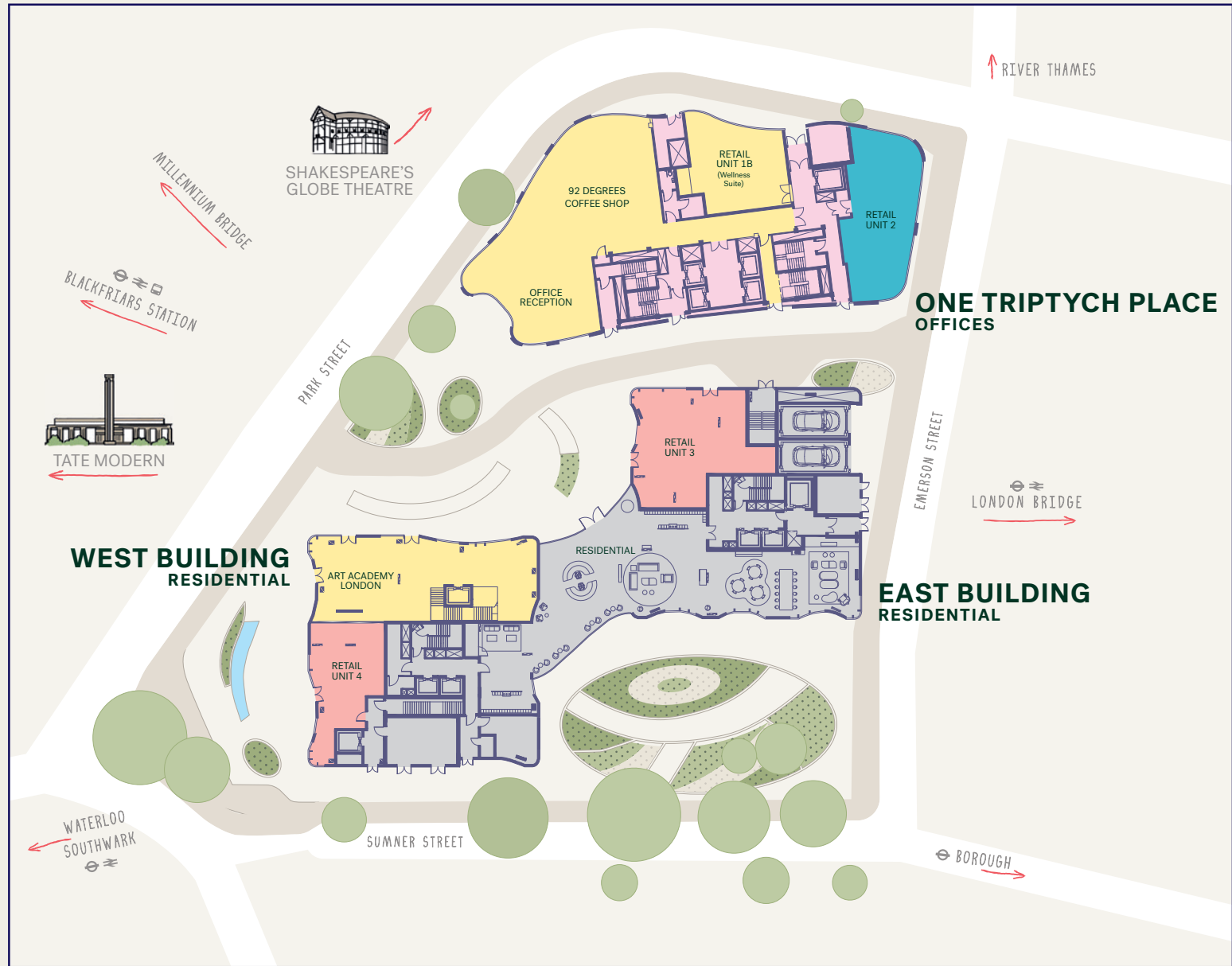
Triptych Bankside residents enjoy exclusive access to first class amenities including 24 hour concierge, 14 seat cinema room, games room and a private lounge equipped with workstations and serene garden views.

For those looking to work up a sweat, Triptych Bankside is home to The Font, a world class indoor bouldering facility. The Font combines bouldering, functional fitness, speciality coffee, craft beer and great pizza; all; all of which is offered to residents of Triptych Bankside at a discounted rate\*.

\*Please speak to the Sales Team for further details.



# Site Plan







Photography of living room

## Inspired interiors

Curated by renowned design house Cocovara London, the interiors are bright, warm and contemporary – a blank canvas from which to create your own masterpiece. Finishes have been meticulously sourced and specified from across the globe, from elegant engineered Oak flooring to bespoke Italian-inspired bathrooms, Carrara marble effect tiles and artisanal bronze ironmongery. Contemporary technology and user experience are paramount, with touch-pad controlled smart lighting, USB ports and full Climate Control throughout. Create your perfect living environment at the touch of a button.





Photography of kitchen

## Designed for living

Open plan kitchens provide contemporary and seamless design features including built-in Miele appliances\*, integrated into handleless, soft-close units. Light-coloured stone countertops complete the modern look.

For optimal convenience, a dedicated utility cupboard tucks away a separate Miele washing machine and Miele tumble dryer.

\*Drinks fridges are an alternative manufacturer.





Photography of bedroom



# Development Information

DEVELOPER	JTRE London
PRIVATE UNIT MIX	169 units comprising 8 studios, 56 one beds, 58 two beds, 45 three beds and 2 four bed penthouses
BUILDING HEIGHT	East Building: 14 storeys West building: 18 storeys
TENURE	Leasehold 999 years
ARCHITECT	Squire & Partners
CEILING HEIGHTS	Approx. 2.6m to all living spaces and bedrooms, minimum height of 2.4m
CAR PARKING	£150,000 per car parking space - available only to penthouses and large 3 bed units
MANAGEMENT COMPANY	Rhodium
SERVICE CHARGE	Circa £7.00 per annum
LOCAL COUNCIL	Southwark Council

**VENDOR'S SOLICITOR** **Setfords**  
Tom Flatau  
46 Chancery Lane  
London WC2A 1JE  
Tel: +44 (0)203 829 5557  
DX 460 London Chancery Lane

**PREFERRED PURCHASERS' SOLICITORS** **Forsters**  
31 Hill Street  
London W1J 5LS  
Tel: +44 (0)207 863 8417  
DX 82988 Mayfair

**Healys**  
Atrium Court  
15-17 Jockey's Fields  
London WC1R 4QR  
Tel: +44 (0)207 822 4000  
DX 1021 London Chancery Lane

**RESERVATION PROCESS** In order to reserve we will require the following:

- £5,000 reservation fee
- Instruction of solicitor within 48 hours from acceptance of the offer

**REQUIRED DOCUMENTS**

- 10% of the purchase price minus reservation fee will be due on exchange of contracts with 21 days
- Remaining balance of 90% will be due upon completion

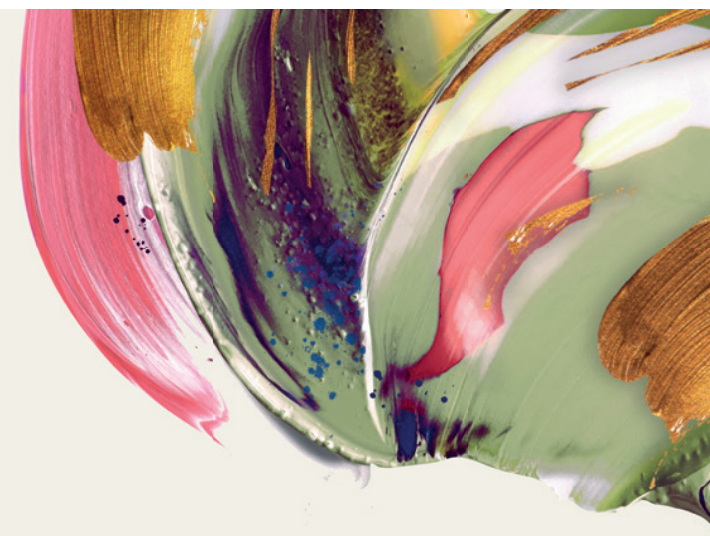
- ID - valid drivers licence or passport
- Proof of address - a bank statement or a utility bill (no older than 3 months)

**WARRANTY** 10 year latent defects warranty with BHP

**RESIDENTS AMENITIES**

- 24h concierge service
- Residents' lounge
- 14 seat cinema room
- Games room
- Workstations
- Bicycle storage
- Car parking spaces\*
- Lockable storage units\*

\* Residential parking spaces and lockable storage units for sale by separate negotiation.







Photography of the Tate Modern from the balcony

**JTRE**  
LONDON

[Sales@TriptychBankside.com](mailto:Sales@TriptychBankside.com)  
+44 (0)207 620 3424

**savills**

**STRUTT  
& PARKER**  
BNP PARIBAS GROUP

**JLL**

1. These particulars are set out as a general outline only for guidance to intending Purchasers or Lessees, and do not constitute any advice, or offer or any contract of any kind. Any intending purchasers, Lessees or Third Parties should not rely on them as statements or representations of fact, but must satisfy themselves by inspection, searches, enquiries, surveys or otherwise as to their accuracy. JTRE and Sons & Co London Limited, Savills, BH2 shall not be liable in any way whatsoever for any loss or damage including without limitation, indirect or consequential loss or damage, or any loss of profits resulting from direct or indirect actions based upon your reliance on the contents of these particulars. 2. All internal and external images of the development are Computer Generated Images (CGIs) and are indicative only. All images used, including CGIs and view photography are for illustrative purposes only. Individual features may vary. Furniture shown in images, is not included within the sale. 3. All floor plans are for approximate measurements only. Exact internal areas, layouts and sizes may vary. All measurements are within a reasonable tolerance in accordance with the sales contract. 4. The development name Triptych Bankside is for marketing purposes only and the Post Office may not include this within the determined postal address.

[triptychbankside.com](http://triptychbankside.com)