



Drovers Place, Huntingdon

+44 (0) 1223 508050

lettings@cookecurtis.co.uk

www.cookecurtis.co.uk

A very spacious three bedroomed townhouse, close to Huntingdon town centre, finished to a modern standard with carport and enclosed garden. A short walk from Huntingdon Train Station and close to an array of local amenities, the A1307 and A14 to Cambridge and Peterborough.

£1,375 pcm

Drovers Place, Huntingdon,
PE29 3DY



Located in the heart of the Drovers Place development, this very spacious three bedroom townhouse is in an ideal location for those working in Huntingdon or looking for an easy commute to Cambridge, Peterborough, St Ives or St Neots. With many local amenities close by for convenience, as well as a communal bicycle store and private undercroft carport.

On entry there is cloakroom area and a long hallway which has two very large storage cupboards leading to the rear enclosed garden. Stairs to the first floor, which has a large open planned kitchen/living room with Juliette balcony. There is ample room for both sofas and a dining area and a modern grey gloss kitchen which comes with a fridge/freezer, oven, hob and extractor over. There is also a modern shower room on this floor with a corner shower cubicle, w.c and basin with feature grey tiles.



On the second floor there are three good sized bedrooms, one with skylight windows and a family bathroom which has a white suite including bath with shower over and heated towel rail.

Available now. Video tour available.

N.B please note that the floorplan and some of the internal photographs are from an identical but mirror image property on the development. They are a true representation and have the same layout and finishing.





101 sqm / 1093 sqft

3 bed, 2 bath, 1 recep

Council tax band - C

EPC - C / 77

Gas central heating

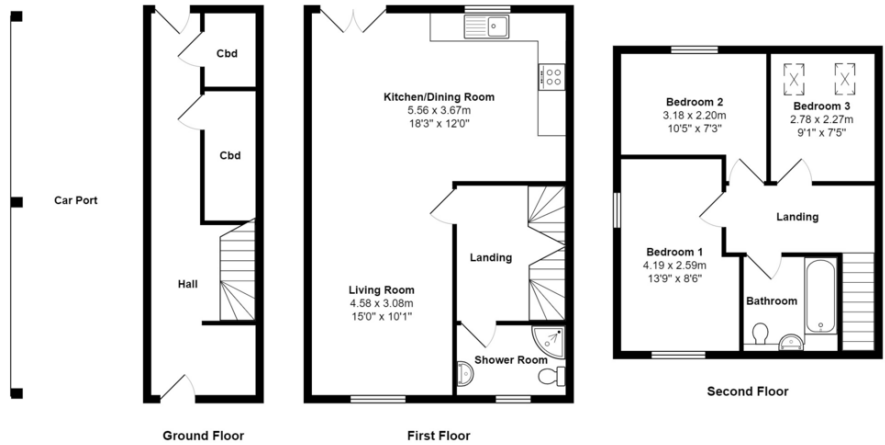
Car port parking

Unfurnished

Available now



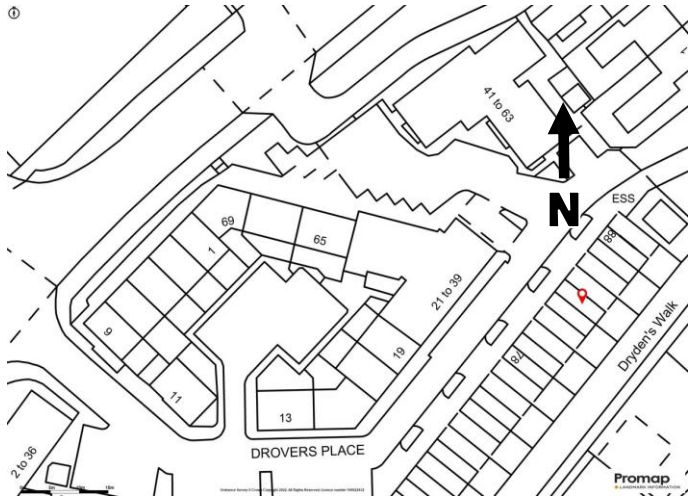
Drovers Place, Huntingdon



Total Area: 101.6 m² ... 1093 ft²

All measurements are approximate and for display purposes only

Plan prepared by charlesjharrison.co.uk



Drovers Place is a new development in Huntingdon. The development is an easy walk or short drive from Huntingdon train station, just one hour by train to London, and sits directly off the A14 and close to the new junction for the A1307 with links to Cambridge and has easy access to the A1 as well as neighbouring St Ives and St Neots. Set conveniently close to the town centre. There are an abundance of local shops, schools, supermarkets, a gym and leisure facilities, cafes, pubs and restaurants within walking distance. There is also a local Rowing club, fitness groups and community projects. The development is in close proximity to Hinchingbrooke Hospital and Country Park and well as a host of picturesque walks along the River Ouse.

COOKE
CURTIS
& CO