

Daniel Watney

3-5 Bedford Row, WC2

Three interlinked Georgian townhouses sensitively refurbished to provide Grade A office accommodation, arranged over five floors

27,198 SQ FT | 2,527 SQ M

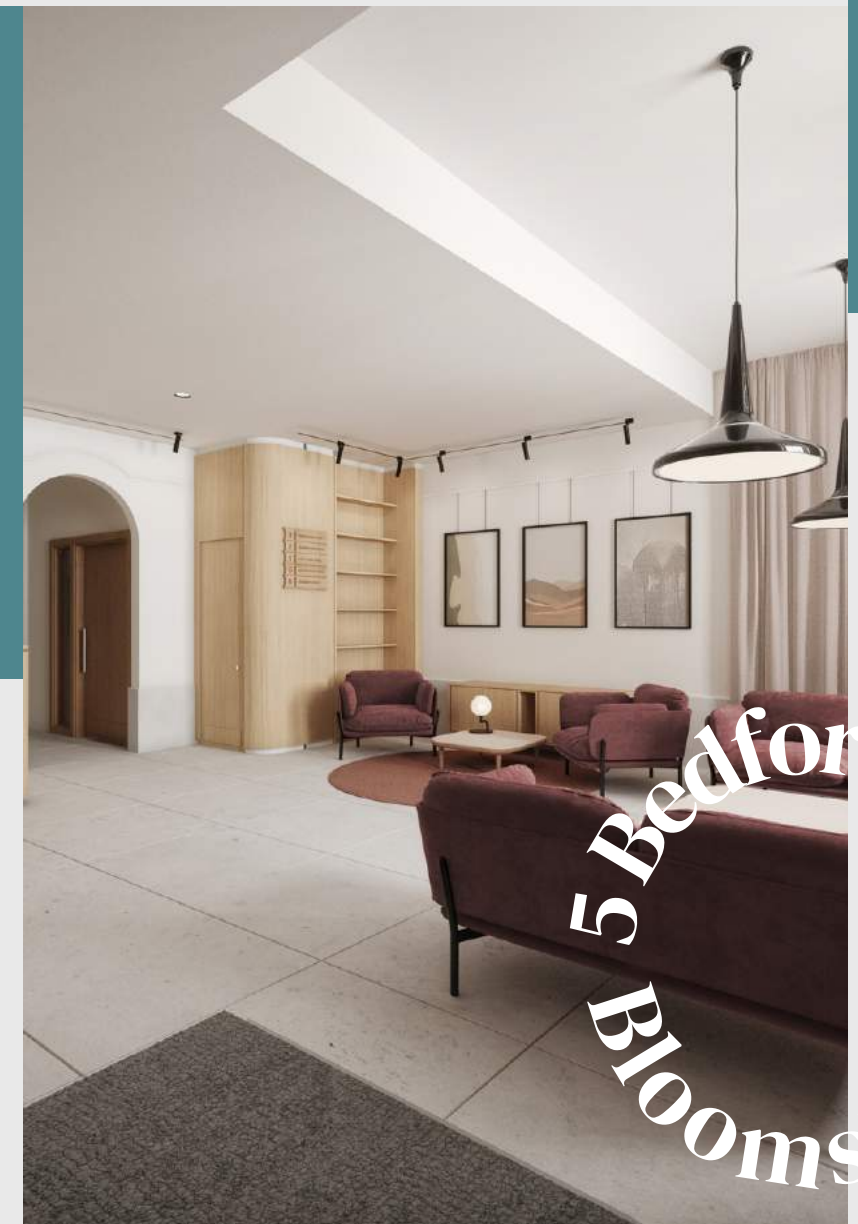


danielwatney.co.uk



Welcome

To 5 Bedford Row, a new development on Bedford Row the likes of which have not been seen before. Comprising three interlinked Georgian townhouses imaginatively reinvented to provide modern office accommodation whilst preserving the heritage charm of the buildings'



5 Bedford Row
Bloomsbury



5 Bedford Row
Bloomsbury



3
2
1
G
B

5 Bedford Row
Bloomsbury



5 Bedford Row
Bloomsbury



5 Bedford Row
Bloomsbury



Availability

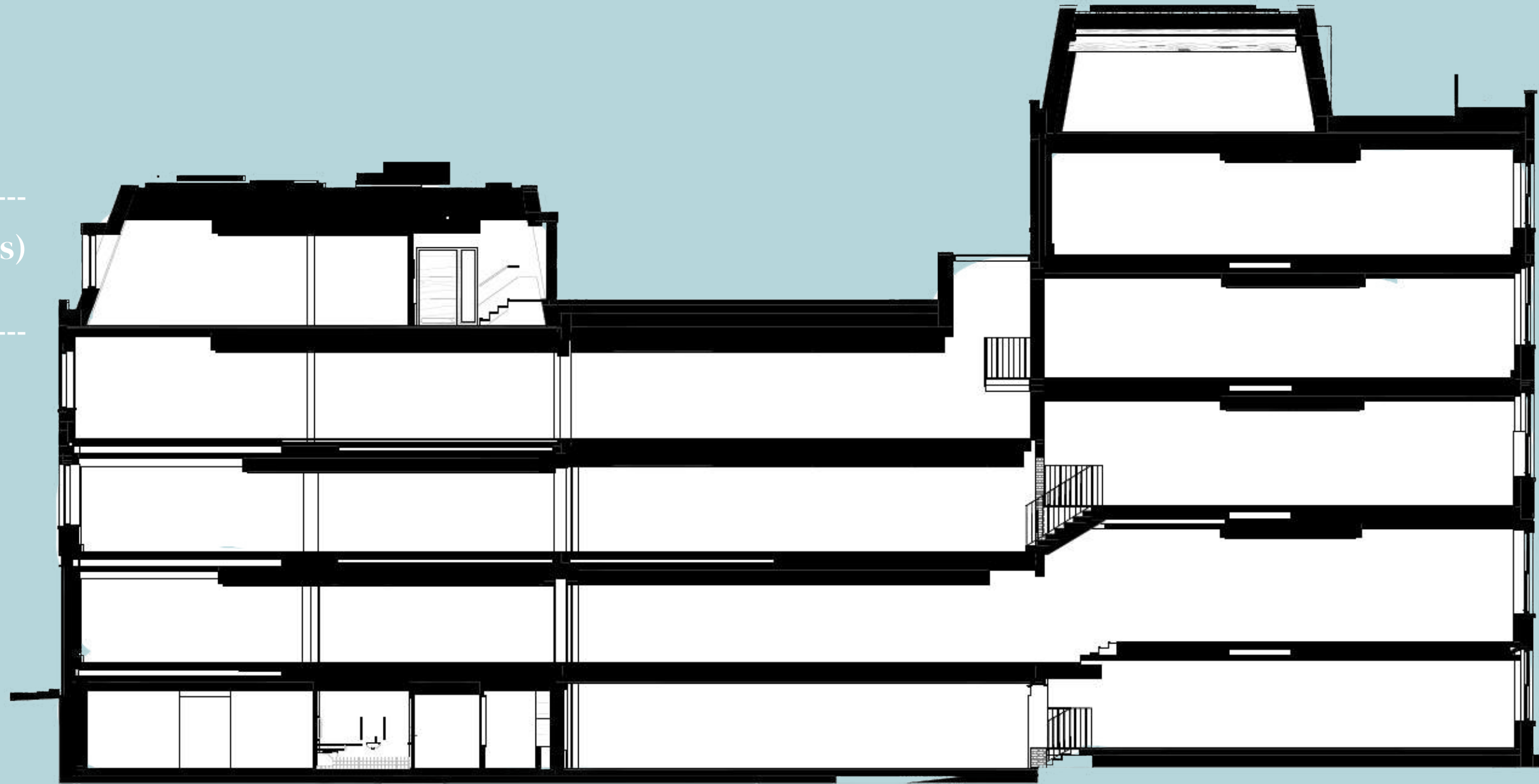
Floor	Net Internal Area	
	sq m	sq ft
4th (Bedford Row)	112.0	1,208
3rd (Jockey's Field)	205.6	2,213
3rd (Bedford Row)	182.1	1,960
2nd	574.0	6,180
1st	571.0	6,145
Ground	496.0	5,335
Lower Ground	386.0	4,157
TOTAL	2,527.06	27,198

N.B Areas are approximate and subject to final verification

5 Bedford Row
Bloomsbury

5 Bedford Row
Bloomsbury

3rd Floor (Jockey's Fields)
182.1 sq m / 1,960 sq ft



4th (Bedford Row)
112.0 sq m / 1,208 sq ft

3rd (Bedford Row)
1205.6 sq m / 2,213 sq ft


2nd
1574.0 sq m / 6,180 sq ft

1st
571.0 sq m / 6,145 sq ft

Ground
496.0 sq m / 5,335 sq ft

Lower Ground
386.0 sq m / 4,157sq ft

Location




Temple



Chancery Lane



Holborn



5 Bedford Row
Bloomsbury

Bloomsbury



5 Bedford Row
Bloomsbury

Further info.

Daniel Watney

Viewings

Viewings must be arranged directly with the joint sole agents.

To arrange a viewing or for more information please contact:

Charlie Browne

Commercial Agency

E: cbrowne@danielwatney.co.uk

M: 07787 123448

Ross Crummey

Commercial Agency

E: rcrummey@danielwatney.co.uk

M: 07714 956016

Bethan McMurrough

Commercial Agency

E: bmcmurrough@danielwatney.co.uk

M: 07730 212417

Subject to Contract. Daniel Watney LLP themselves and for the vendors or lessors of this property whose agents they are, have taken all reasonable steps to ensure the accuracy of these particulars which are a general outline only and do not constitute the whole or any part of an offer or contract. The information is given in all good faith but intending purchasers and lessees must satisfy themselves independently as to the accuracy of all matters upon which they intend to rely. Daniel Watney LLP is a limited liability partnership regulated by RICS. A list of members is available at our registered office Registered in England. Registered number OC356464. Registered office as address.. **November 2023**