



2 Fakenham Road, Beetley

In Excess of £375,000

2 Fakenham Road

Beetley, Dereham

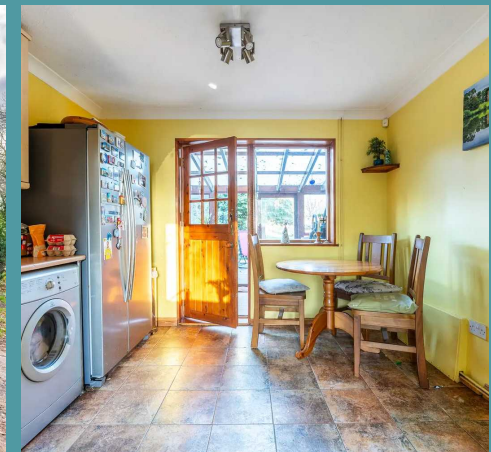
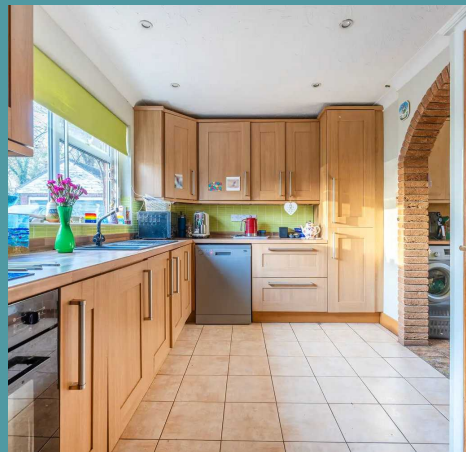
Welcome to this five-bedroom property, where style meets functionality in perfect harmony. The ground floor offers a seamless flow through open-plan living spaces, including a well-equipped kitchen and a versatile bedroom/home office. Upstairs, four thoughtfully designed bedrooms await, complemented by a stylish bathroom. The expansive rear garden is a true outdoor oasis, featuring a large patio, lawn, and even a vegetable patch, while ample off-road parking and a spacious garage complete the picture of this exceptional home.

Council Tax band: D

Tenure: Freehold

EPC Energy Efficiency Rating: E

EPC Environmental Impact Rating: E





2 Fakenham Road

Beetley, Dereham

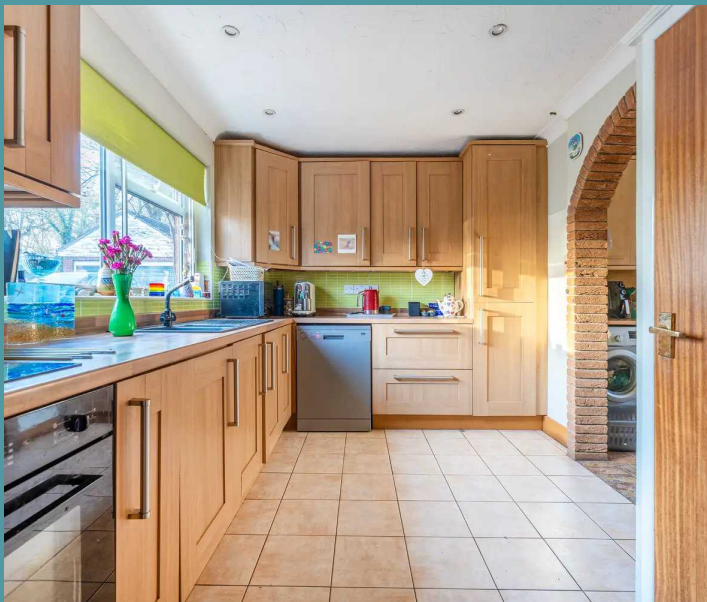
Welcome to this five-bedroom property, where style meets functionality in perfect harmony. The ground floor offers a seamless flow through open-plan living spaces, including a well-equipped kitchen and a versatile bedroom/home office. Upstairs, four thoughtfully designed bedrooms await, complemented by a stylish bathroom. The expansive rear garden is a true outdoor oasis, featuring a large patio, lawn and even a vegetable patch, while ample off-road parking and a spacious garage complete the picture of this exceptional home.

LOCATION

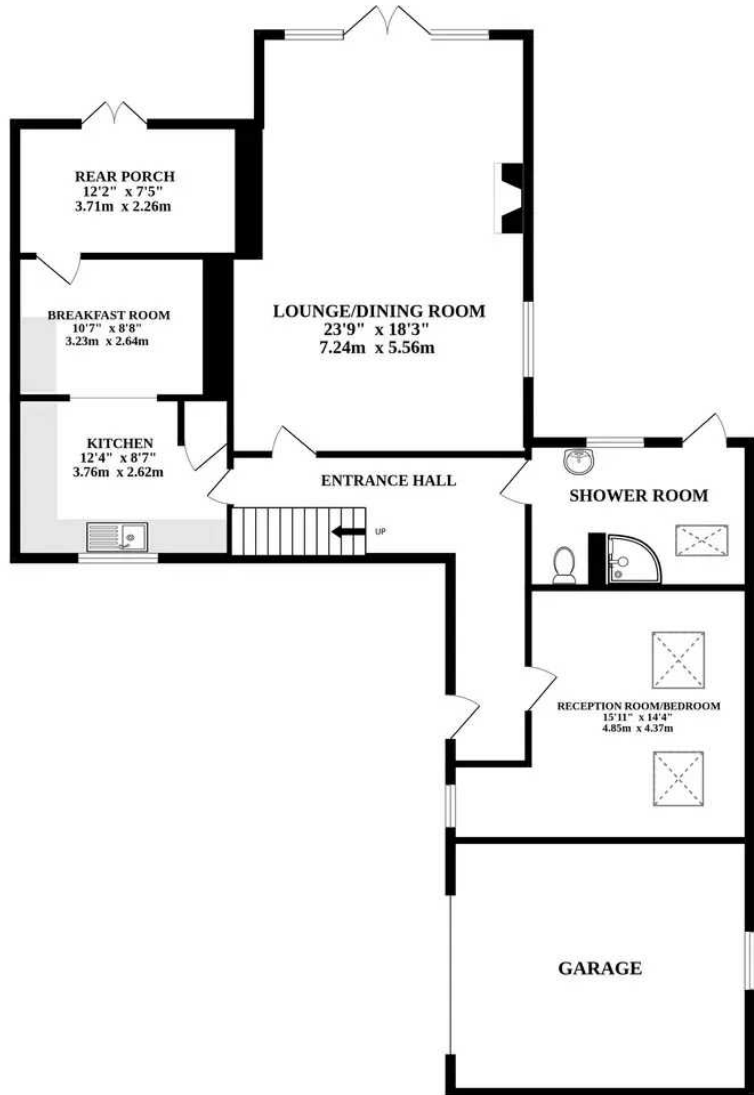
Nestled in the picturesque village of Beetley, Fakenham Road is a residence that epitomizes the essence of an ideal location. The property, situated in the NR20 postcode, offers residents the perfect blend of tranquility and convenience. With easy access to vital amenities, the nearby town of Dereham becomes a bustling hub for shopping, dining and cultural experiences. This lovely and quiet village setting provides a serene backdrop for daily life, making it an appealing choice for those seeking a peaceful retreat. Moreover, the residence falls within the catchment area of various schooling options, adding an extra layer of appeal for families. The well-rounded nature of this location, coupled with its sought-after status.

THE PROPERTY

Welcome to this exquisite five-bedroom property, a blend of style and functionality. As you step through the entrance hallway, you'll find access to



GROUND FLOOR



1ST FLOOR

