



41 Glendevon Park, Winchburgh



41 Glendevon Park

Winchburgh, Broxburn

Three Bedroom Mid Terraced Villa

Tenure: Freehold





Vestibule

Access through door with opaque double glazed inset. Window to side with new venetian blind. Doors to two large cupboards, one housing new combi gas central heating boiler.

Hall

Welcoming hallway with doors to vestibule and downstairs bedroom. New carpeted hall and staircases. Front facing window with new venetian blind. Radiator.

Bedroom Three

10' 3" x 7' 5" (3.12m x 2.26m)

Good sized single bedroom on ground floor. Front facing window with new venetian blind. Cupboard with shelf and hanging rail. New radiator and laminate flooring.

Lounge

16' 6" x 13' 2" (5.03m x 4.01m)

Spacious sitting room with rear facing window offering countryside views. Opaque glazed door to rear garden. Fire surround with marble inset and hearth. Shelves cupboard. New laminate flooring through lounge and kitchen/dining room. Radiator.

Fitted Kitchen/Dining Room

13' 2" x 8' 2" (4.01m x 2.49m)

Fitted with base and wall mounted units, 1.5 bowl stainless steel sink, side drainer and mixer tap, complementary worktop with tiling above. The washing machine and dishwasher are included in the sale but are not warranted. 4 shelved cupboards. Rear facing window offering open views. New roller blind, two 3-way spotlights, radiator.

Upper Landing

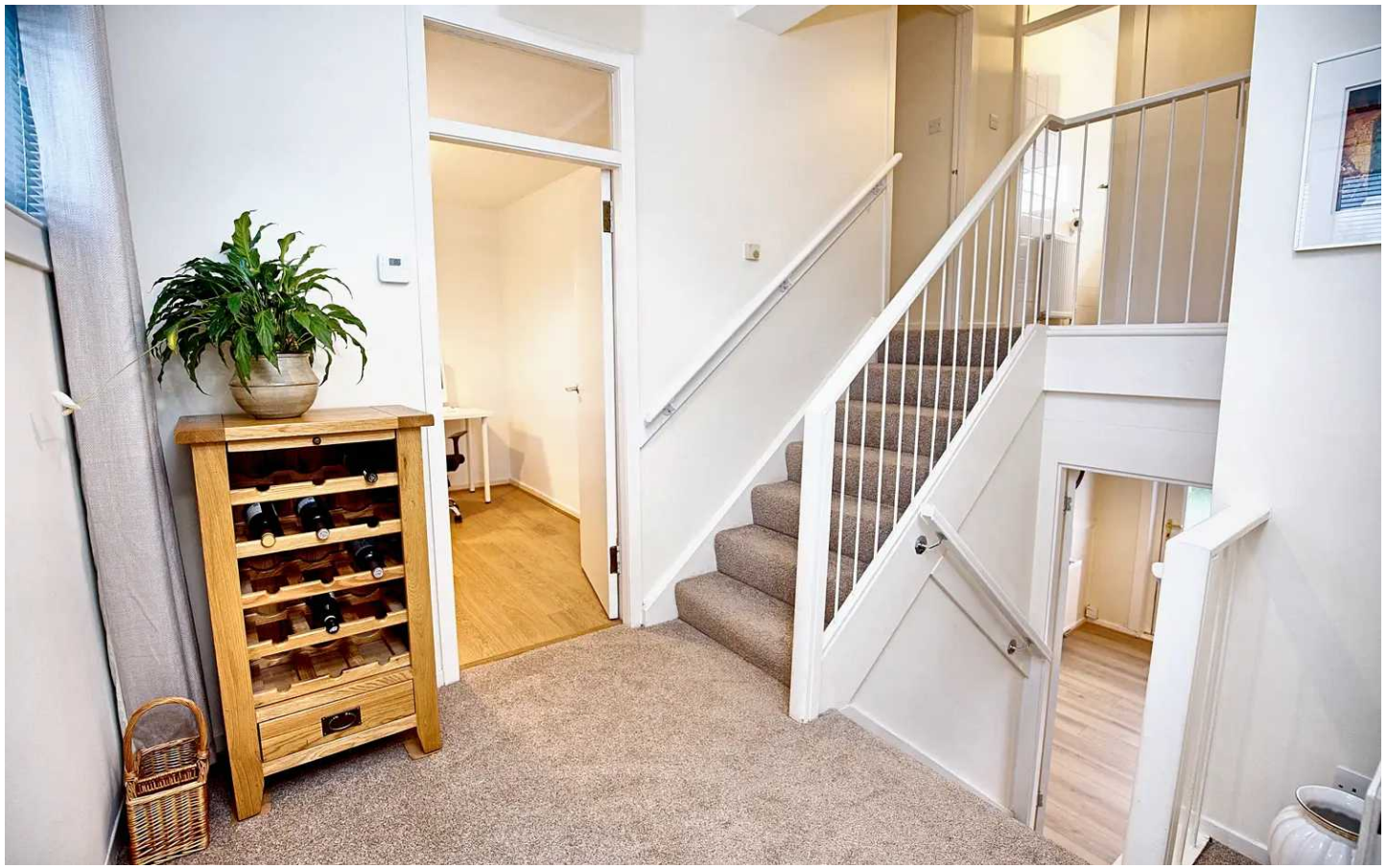
Doors to bedrooms and bathroom. Double doors to shelved cupboard. Hatch to part floored attic.

Bedroom One

11' 5" x 10' 0" (3.48m x 3.05m)

Spacious double bedroom with rear facing window offering views over open countryside. Two double wardrobes, one with shelves and one with hanging rails. Radiator, new laminate flooring.







KnightBain Estate Agents

Knightbain, 4 Greendykes Road, Broxburn - EH52 5AG

01506 852000

info@knightbain.co.uk

www.knightbain.co.uk/



KnightBain 