



£250,000

Jessops Lane, Gedling, Nottingham NG4 4BZ

EPC Rating D



Semi detached family home offered for sale with no upward chain. In brief, the accommodation comprises an entrance hallway with stairs to the first floor, lounge diner with French doors onto the rear garden, modern white kitchen diner, boiler room and store room with provisions for a downstairs toilet. To the first floor is a three piece bathroom with an electric shower over a p shape bath and three bedrooms with built in storage to bedrooms one and two.

There is hard standing to the front with potential to drop the curb, subject to the necessary permission. The rear garden is landscaped with a paved patio area, lawn, fruit trees and allotment area.

Gedling is a popular and well-established residential area close to schools, shops, pubs, restaurants, public transport and leisure facility. It is also well known for its Country Park which has a play area and café.

- Freehold
- Council tax band B

ENTRANCE HALL 8' 9" x 4' 7" (2.67m x 1.4m)

LOUNGE/DINER 21' 7" x 10' 6" into recess (6.58m x 3.2m)

KITCHEN/DINER 16' 7" x 8' 9" to the maximum (5.05m x 2.67m)

REAR LOBBY 3' 4" x 2' 10" (1.02m x 0.86m)

BOILER ROOM 4' 0" x 2' 5" (1.22m x 0.74m)

STORAGE ROOM (WITH PLUMBING FOR WASHING MACHINE) 2' 23" x 0' 76" (1.19m x 1.93m)

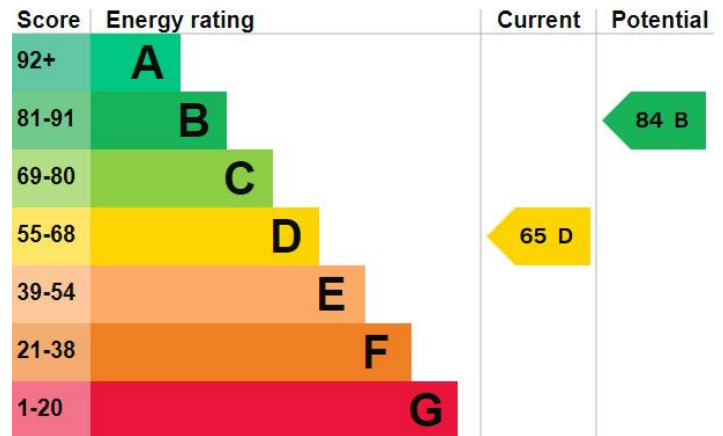
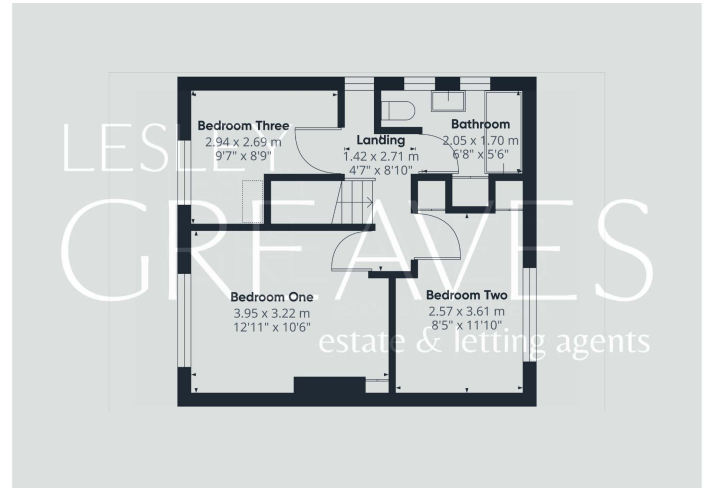
BEDROOM ONE 12' 11" x 10' 6" into recess (3.94m x 3.2m)

BEDROOM TWO 11' 10" plus cupboard recess x 8' 5" (3.61m x 2.57m)

BEDROOM THREE 9' 7" x 8' 9" L shape, maximum measurements(2.92m x 2.67m)

BATHROOM 6' 8" x 5' 6" (2.03m x 1.68m)





COUNCIL TAX BAND: B

LOCAL AUTHORITY: Gedling Borough Council

20 Main Road
Gedling
Nottingham
NG4 3HP

Contact Us
www.lesleygreaves.co.uk
sales@lesleygreaves.co.uk
0115 987 7337

Agents Note: Whilst every care has been taken to prepare these particulars, they are for guidance purposes only. All measurements are approximate and for general guidance purposes only and whilst every care has been taken to ensure their accuracy, they should not be relied upon and potential buyers/tenants are advised to recheck the measurements.

