

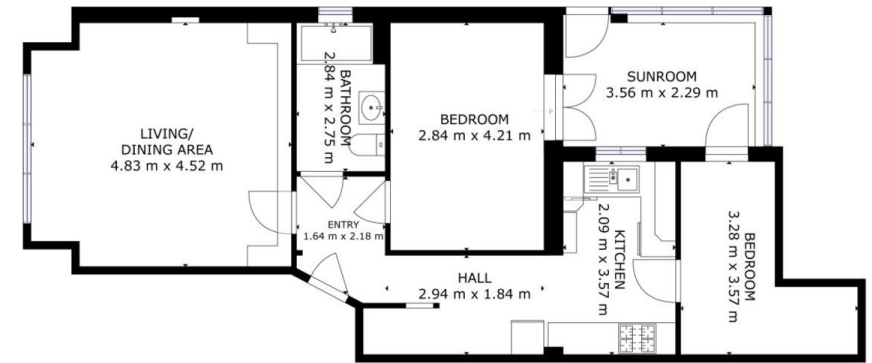


- EPC RATING: D
- TWO BEDROOMS
- LIVING ROOM
- CONSERVATORY/SUNROOM

Silverdale, London, SE26 4SQ

Offers In Excess Of £425,000

A garden flat with two bedrooms and share of freehold, close to the centre of Sydenham



FLOOR 1

GROSS INTERNAL AREA
TOTAL: 75 m²
SIZES AND DIMENSIONS ARE APPROXIMATE, ACTUAL MAY VARY

Matterport

Score	Energy rating	Current	Potential
92+	A		
81-91	B		
69-80	C		76 C
55-68	D	64 D	
39-54	E		
21-38	F		
1-20	G		

1356A London Road, Norbury,
London, SW16 4DE

www.heavenestateagents.co.uk
02086966904
info@heavenestateagents.co.uk

Agents Note: Whilst every care has been taken to prepare these particulars, they are for guidance purposes only. All measurements are approximate and for general guidance purposes only and whilst every care has been taken to ensure their accuracy, they should not be relied upon and potential buyers/tenants are advised to recheck the measurements