



Cornwall Street, Devonport, Plymouth PL1 4NY

£265,000 EPC - C



Cornwall Street

Devonport, Plymouth

Introducing this exceptional three bedroom mid-terraced property, boasting mesmerising views of the picturesque River Tamar. Situated within an esteemed award-winning development, this contemporary family home offers spacious living areas and modern comforts, making it an enviable choice for those seeking a perfect blend of style and convenience.

Council Tax band: C

Tenure: Freehold

- Stunning River Tamar Views
- Three Double Bedroom Terrace Home
- Award Winning Development
- West Facing Garden
- Master En-Suite
- Family Bathroom
- Separate Lounge, Kitchen/Diner
- Close to Local Amenities
- Short Drive to City Centre



Cornwall Street

Devonport, Plymouth

Introducing this exceptional three bedroom mid-terraced property, boasting mesmerising views of the picturesque River Tamar. Situated within an esteemed award-winning development, this contemporary family home offers spacious living areas and modern comforts, making it an enviable choice for those seeking a perfect blend of style and convenience.

As you step into the property, you are greeted by a welcoming entrance hall that leads to the various rooms on offer. The bright and airy lounge provides a tranquil space to unwind, while the adjoining open plan kitchen/diner offers a sociable area for family meals and entertaining guests. The kitchen is equipped with modern appliances and ample storage space, ensuring both functionality and aesthetics.

Spread across three levels, this property boasts three generous double bedrooms, providing comfortable and private spaces for family members or visitors. The master bedroom benefits from an en-suite, featuring contemporary fixtures and fittings. Additionally, there is a well-appointed family bathroom, complete with a bath-tub and a sleek finish.

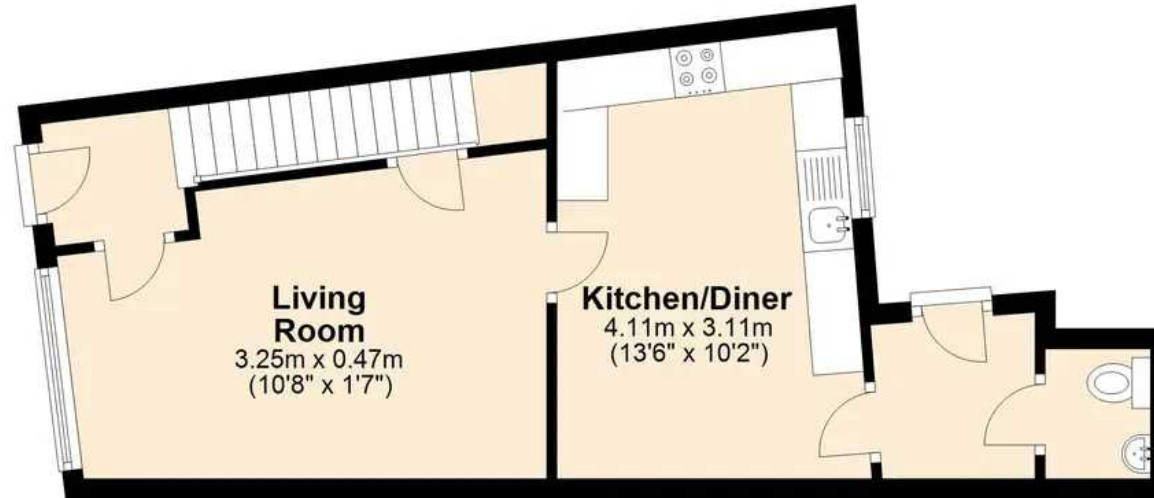
Displaying a keen attention to detail, this home offers captivating panoramic views of the River Tamar, creating a serene backdrop for daily life. The west-facing garden presents an opportunity to bask in the afternoon sun, ideal for outdoor relaxation or hosting al fresco gatherings.





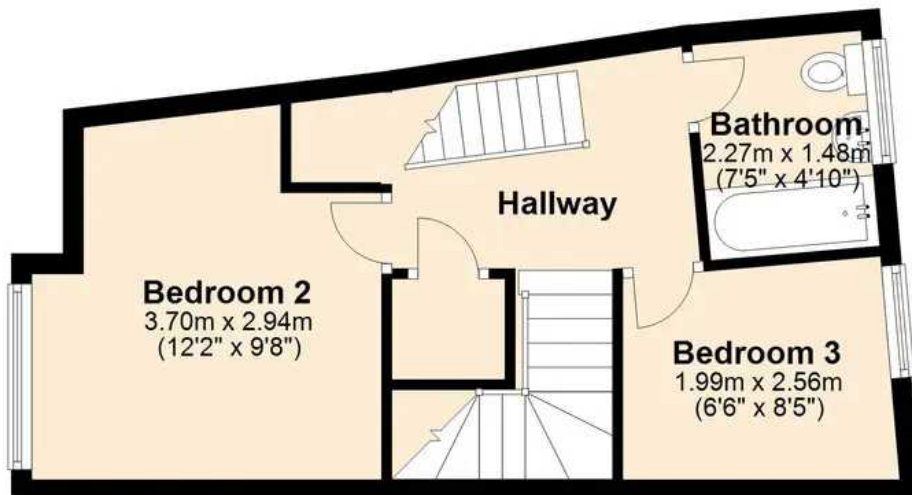
Ground Floor

Approx. 35.3 sq. metres (379.8 sq. feet)



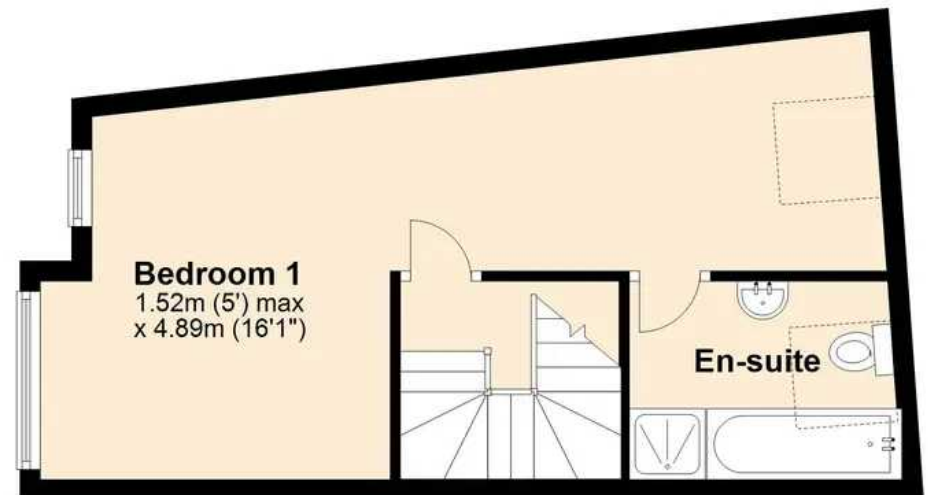
First Floor

Approx. 32.2 sq. metres (347.0 sq. feet)

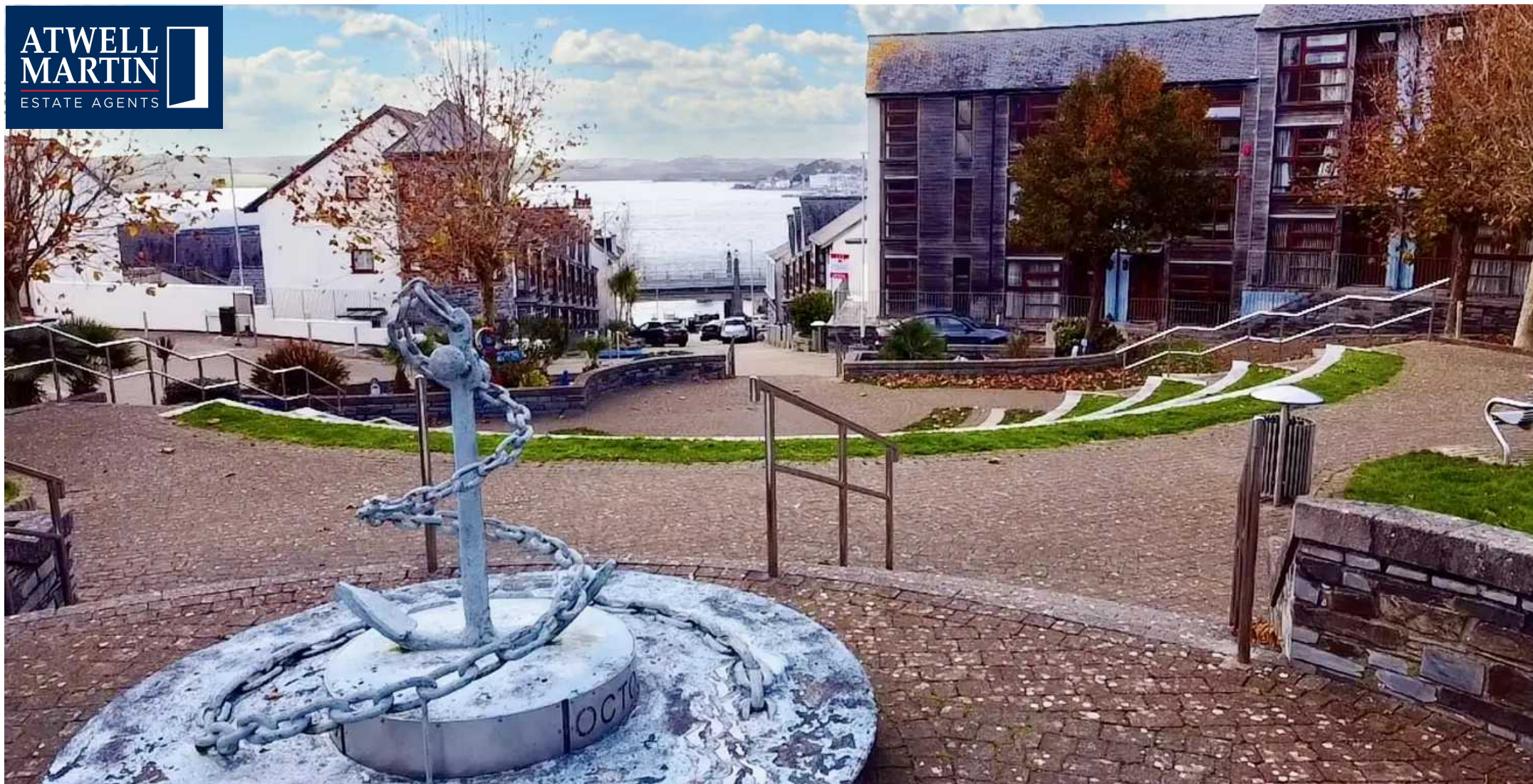


Second Floor

Approx. 32.4 sq. metres (348.4 sq. feet)



Total area: approx. 99.9 sq. metres (1075.2 sq. feet)



Atwell Martin

Atwell Martin, 65 Southside Street – PL1 2LA

01752 202121

plymouthsales@atwell-martin.co.uk

plymouth.atwellmartin.co.uk/

Atwell Martin Plymouth endeavour to ensure the accuracy of property details produced and displayed. Please note that we have not tested any apparatus, equipment, fixtures, fittings or services and so cannot verify that they are connected, in working order or fit for purpose. It is imperative that the buyer of any property makes such checks, prior to purchase so as to satisfy themselves of the properties suitability for their purchase. .