



12 Cholesbury By The Wood, Watford

Watford

Offers in Region of **£400,000**

 **LAWRENCE RAND**

12 Cholesbury By The Wood

, Watford

Exceptionally spacious three-bedroom, ground-floor flat set within this popular residential development in this quiet road in Carpenters Park. The accommodation is family sized and has two reception rooms, utility room, garage and long lease.

Council Tax band: D

Tenure: Leasehold

EPC Energy Efficiency Rating: C

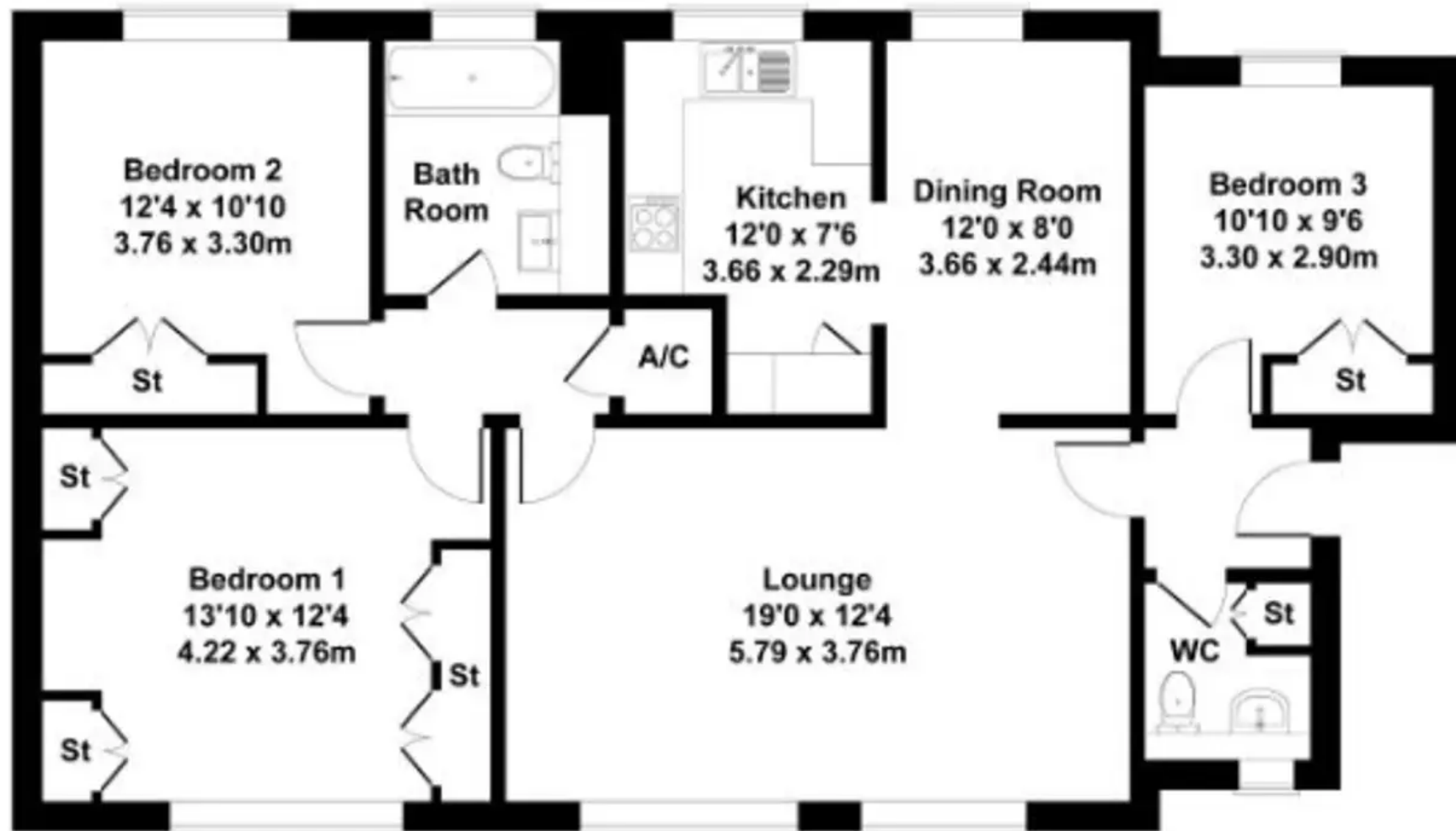
EPC Environmental Impact Rating: C

- Exceptionally spacious
- Three bedrooms
- Two receptions
- Garage
- Ground floor
- Long lease
- Utility room





Approximate Gross Internal Area
1012 sq ft - 94 sq m





Lawrence Rand

Lawrence Rand, 106 Victoria Road - HA4 0AL

01895 632211

Info@lawrence-rand.co.uk

www.lawrence-rand.co.uk/



LAWRENCE RAND