



51 Ripley Grove, Baffins

Portsmouth

Offers in Region of £280,000





51 Ripley Grove

Baffins, Portsmouth

We are delighted to be marketing this beautiful three bedroom home, located in the heart of Baffins with easy access to both the Eastern Road and M27. Close to amenities, parks and local schools, the property is perfect for those who enjoy City Living. The entrance hall has a modern double glazed front door with stairs to the first floor and access to the Lounge. This lovely room has a large bay window and fireplace as it's centre points. Neutral colour schemes and picture rails all add to the style of this welcoming room. Next you'll find our favourite part of the house. The Dining Room. Beautifully decorated, this room would make a great entertaining space. It's naturally a bright room and perfect for entertaining. There is a large understairs storage cupboard here too.

The Kitchen features a range of coloured shaker style wall and base cabinets with worktops over. It's stylish and a great place to cook that Sunday Roast!

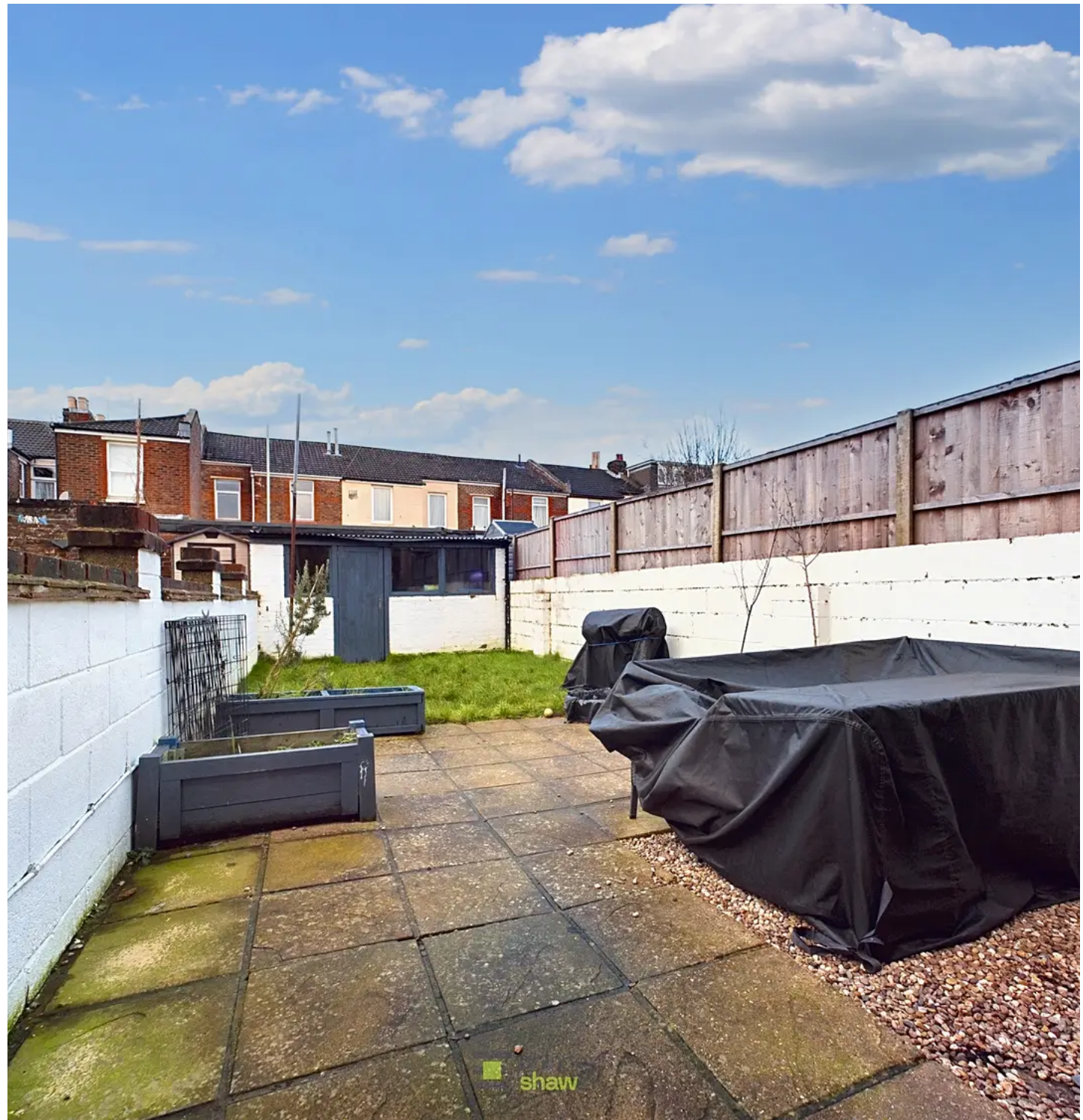
Upstairs you'll find a long landing which accesses all three bedrooms and the bathroom. The modern bathroom is well executed with a white suite and tiled surrounds.

The principal double bedroom is the full width of the house so a large double. The other two bedrooms are also a good size and ready to move straight into.

Outside, you'll find a small front forecourt area with a wooden gate and to the rear, a west facing garden which is a good size and perfect for little ones to play safely in not to mention a great place for summer barbeques!

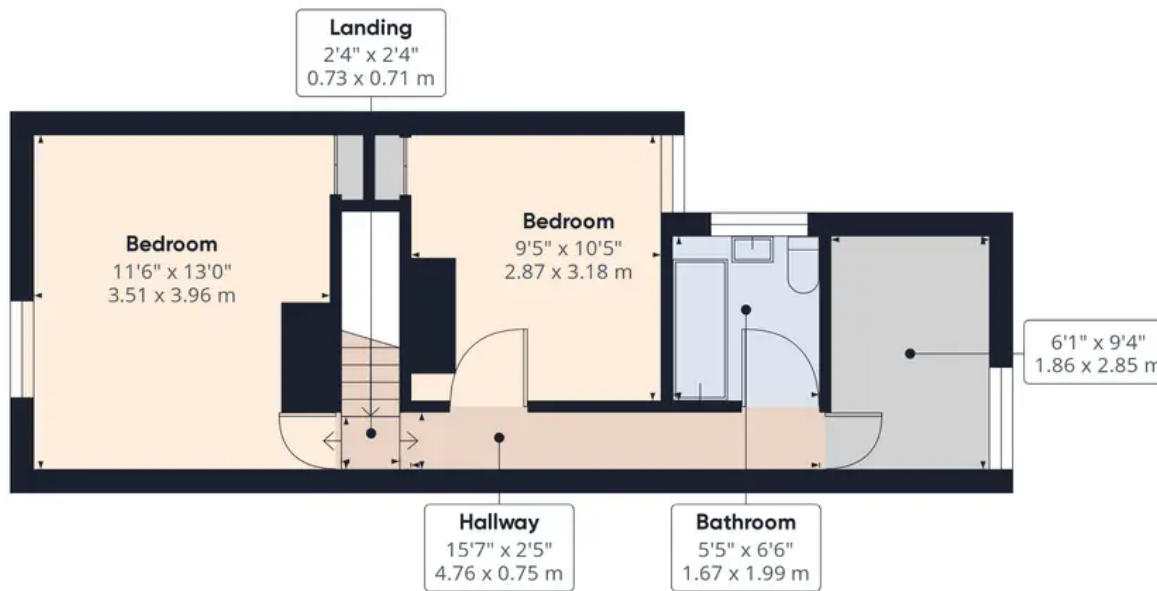
All in all, we think this lovely house would make someone a great starter home!

Tenure: Freehold





Ground Floor



Floor 1

Approximate total area¹⁾

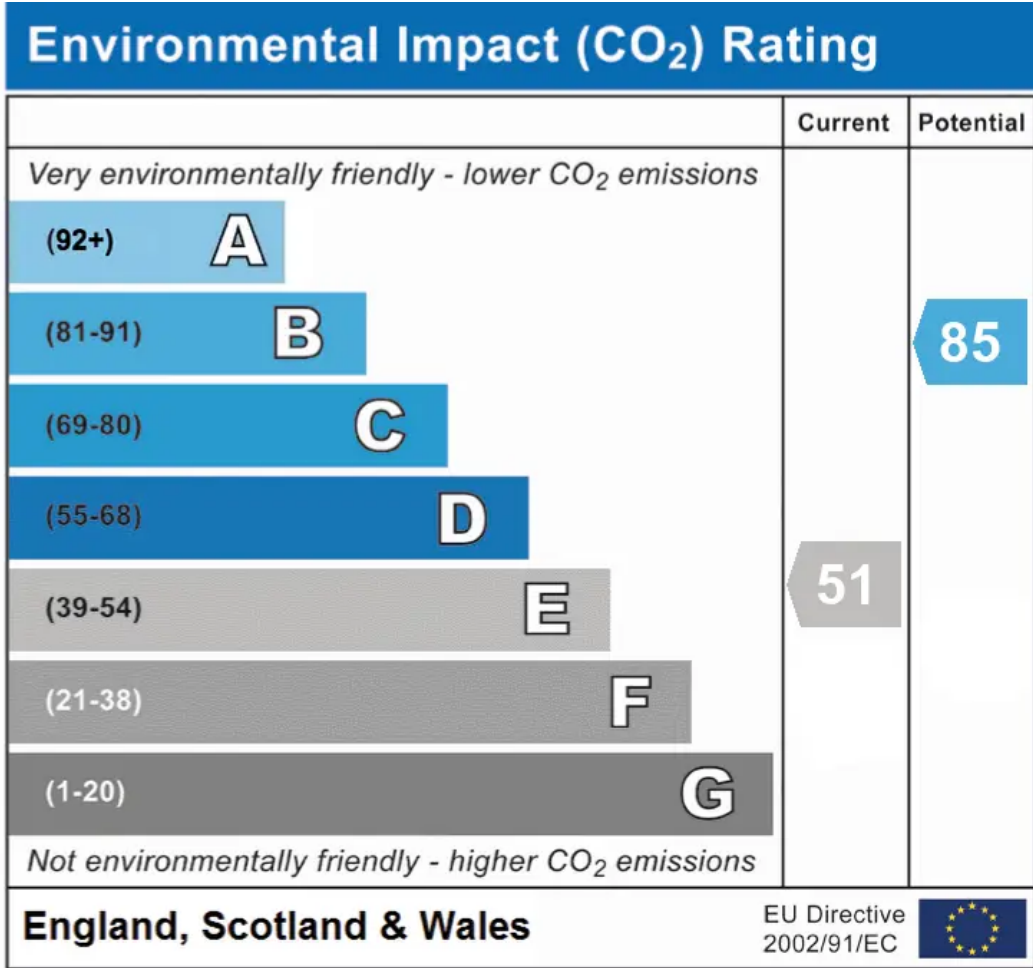
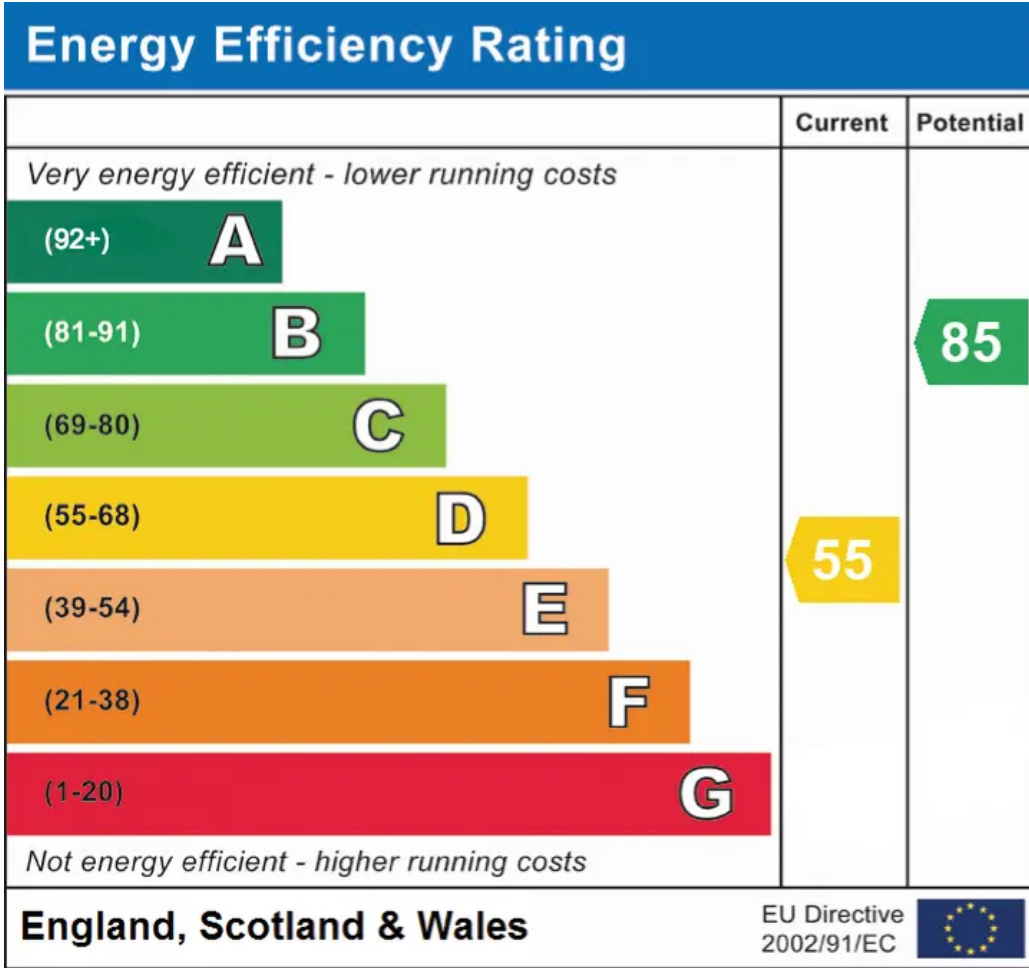
785.57 ft²

72.98 m²

Excluding balconies and terraces

While every attempt has been made to ensure accuracy, all measurements are approximate, not to scale. This floor plan is for illustrative purposes only.

GIRAFFE360



Chinneck Shaw

Bridge House, Milton Road, Portsmouth – PO3 6AN

023 9282 6731

hello@chinneckshaw.co.uk

www.chinneckshaw.co.uk/

Chinneck Shaw, Bridge House, Milton Road, PO3 6AN Consumer Protection from Unfair Trading Regulations 2008: These details are for guidance only and complete accuracy cannot be guaranteed. If there is any point which is of particular importance, verification should be obtained. The do not constitute a contract or part of a contract. All measurements are approximate. No guarantee can be given with regard to planning permissions or fitness for purpose. No apparatus, equipment, fixture or fitting has been tested. Items shown in the photographs are NOT necessarily included. Interested Parties are advised to check availability and make an appointment to view before travelling to see a property.