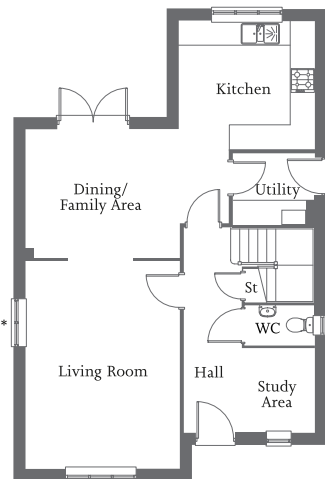




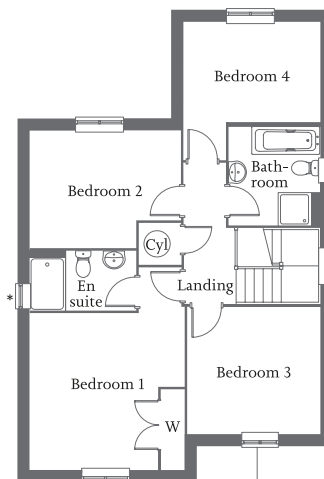
| Front aspect living room | Kitchen/dining/family area with French Doors | Study area |  
| Bedroom 1 with en suite and wardrobe | Three further bedrooms and family bathroom | Single garage and parking spaces |



\* Windows to specific plots only

### Ground Floor

Living Room	4.97m x 3.75m	16'4" x 12'4"
Dining/Family Area	3.81m x 3.18m	12'4" x 10'5"
Kitchen	3.38m x 3.36m	11'1" x 11'0"
Utility	2.00m x 1.74m	6'7" x 5'9"
Study Area	1.87m x 1.82m	6'2" x 5'11"



### First Floor

Bedroom 1 (incl. w/robe & excl. door recess)	3.75m x 3.68m	12'4" x 12'1"
En suite <sup>†</sup>	2.33m x 1.43m	7'8" x 4'8"
Bedroom 2	3.75m x 2.90m	12'4" x 9'6"
Bedroom 3	3.27m x 3.15m	10'7" x 10'3"
Bedroom 4 (excl. door recess)	3.39m x 2.48m	11'1" x 8'1"
Bathroom	2.45m x 2.25m	8'0" x 7'5"

<sup>†</sup>En suite layout differs depending on plot, please consult your sales executive for more details.