

FOR SALE



Alum Chine Beach, Bournemouth
Asking Price of £39,500


MARTIN & CO

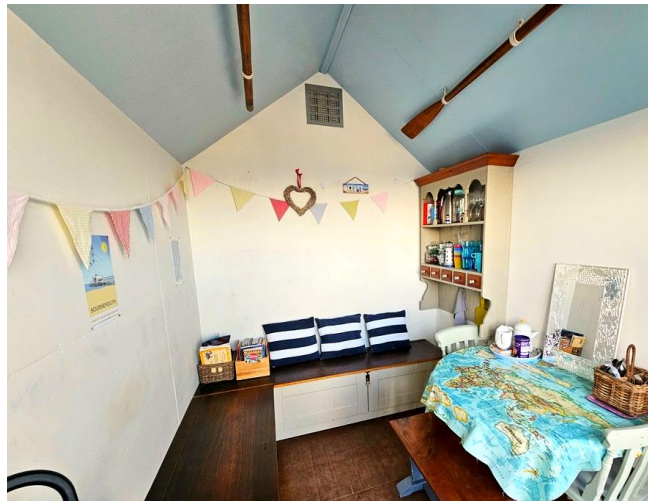
Alum Chine Beach, Bournemouth

Asking Price of £39,500

- Detached Beach Chalet
- Panoramic Sea Views
- Own Decking, South Facing
- Spacious Interior
- Easy Access to Public Toilets & Car Park

EXQUISITE SEASIDE RETREAT
WITH PRIME REAL ESTATE APPEAL
AND EXCEPTIONAL AMENITIES
CLOSE BY
THE PERFECT PLACE FOR
RELAXING IN SUMMER !

This picture-perfect detached beach chalet is nestled in the renowned Alum Chine in Bournemouth, with its award winning sandy bathing beaches, this property is a coastal haven. It boasts spectacular sea views, own south facing deck, great views of the Tropical Gardens, access to toilets and easy access to public car park. It is the perfect place for relaxing in summer! Londoners could hop on a train and arrive at this charming beach chalet within a couple of hours. Situated in a second row position, in a cluster of only 13 chalets, it's a short beach walk from Bournemouth Pier and town centre and about 10 minutes' drive to railway station with links to London Waterloo.



The chalet is a stone's throw away from Vesuvio Bar and Restaurant a popular café on the seafront offering authentic Italian cuisine and with a children's playground at the rear.

Tenure - Leasehold

Term - 25 years from 15 June 2009

Remaining - 10 years

Year built - 2009

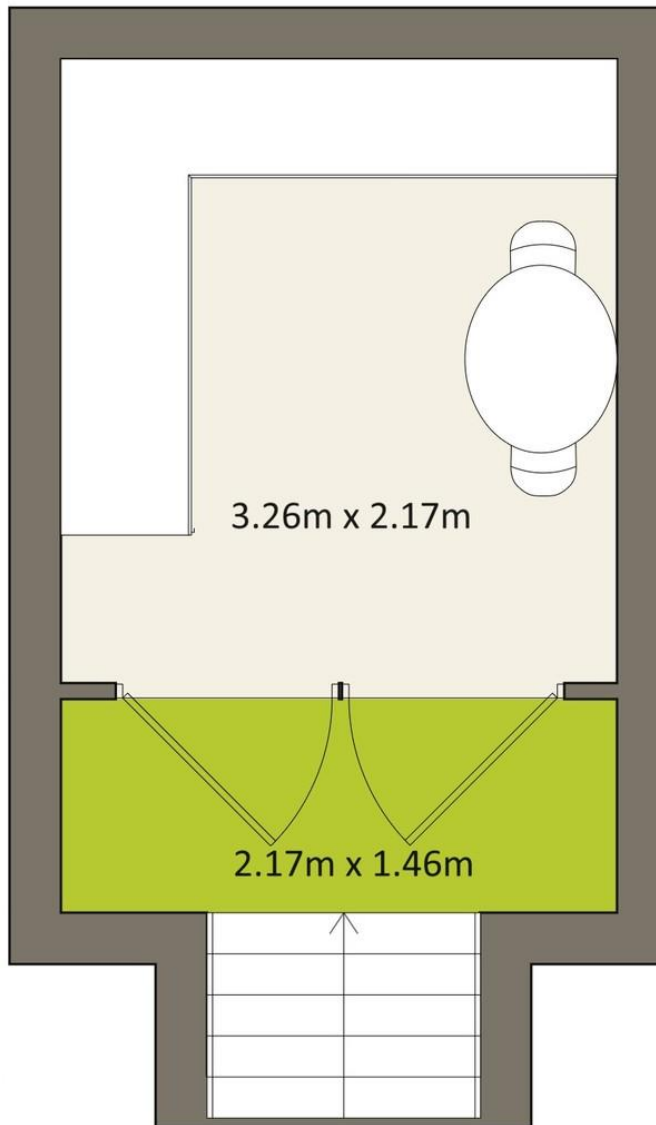
Annual Charge - £1,093.70 per annum

Chalet - 10' 8" X 7' 1" (3.26m X 2.17m)

Decking - 7' 1" x 4' 9" (2.17m x 1.46m)

1. Money laundering regulations: intending purchasers will be asked to produce identification documentation at a later stage and we would ask for your co-operation in order that there will be no delay in agreeing the sale. **2. General:** while we endeavour to make our sales particulars fair, accurate and reliable, they are only a general guide to the property and, accordingly, if there is any point which is of particular importance to you, please contact the office and we will check the position for you, especially if you are contemplating travelling some distance to view the property. **3. Measurements:** these approximate room sizes are only intended as general guidance. You must verify the dimensions carefully before ordering carpets or any built-in furniture. **4. Services:** please note we have not tested the services or any of the equipment or appliances in this property, accordingly we strongly advise prospective buyers to commission their own survey or service reports before finalising their offer to purchase. **5. These particulars** are issued in good faith but do not constitute representations of fact or form part of any offer or contract. The matters referred to in these particulars should be independently verified by prospective buyers or tenants. Neither Martin and Co Bournemouth limited nor any of its employees or agents has any authority to make or give any representation or warranty whatever in relation to this property.





Martin & Co Bournemouth

192 Seabourne Road • Bournemouth • BH5 2JB
T: 01202559922 • E: bournemouth@martinco.com

01202559922

<http://www.bournemouth.martinco.com>



Accuracy: References to the Tenure of a Property are based on information supplied by the Seller. The Agent has not had sight of the title documents. A Buyer is advised to obtain verification from their Solicitor. Items shown in photographs including but not limited to carpets, fixtures and fittings are not included unless specifically mentioned within the sales particulars. They may however be available by separate negotiation. Buyers must check the availability of any property and make an appointment to view before embarking on any journey to see a property. No person in the employment of the agent has any authority to make any representation about the property, and accordingly any information given is entirely without responsibility on the part of the agents, sellers(s) or lessors(s). Any property particulars are not an offer or contract, nor form part of one. **Sonic / laser Tape:** Measurements taken using a sonic / laser tape measure may be subject to a small margin of error. **All Measurements:** All Measurements are Approximate. **Services Not tested:** The Agent has not tested any apparatus, equipment, fixtures and fittings or services and so cannot verify that they are in working order or fit for the purpose. A Buyer is advised to obtain verification from their Solicitor or Surveyor.

