



83 Heath End Road, Flackwell Heath
£525,000



83 Heath End Road

Flackwell Heath, High Wycombe

An extended family home in this popular village location with stunning views over adjoining farmland to the rear. Entrance hall, Cloakroom, Kitchen, Sitting/Dining room, Three bedrooms, Bathroom, Gas central heating, Double glazing, Garage and parking, rear gardens.

Tenure: Freehold

Entrance hall

Radiator, stairs to first floor with under stairs storage cupboard, cupboard with space and plumbing and dryer

Cloakroom

Low level W.C., wash hand basin with mixer tap and tiled splash back, radiator, tiled flooring, under floor heating

Sitting room

Two radiators, opening to Dining area

Dining room/Breakfast room

Radiator, two velux windows, sliding doors to garden, space for table

Kitchen

Fitted with a range of eye and base level units incorporating stainless steel sink unit with mixer tap and drainer, built in double oven, built in microwave, fitted four ring gas hob with extractor over and glass splash back, built in Neff dishwasher, built in fridge/freezer, fitted breakfast bar, under floor heating





First floor

Landing

Access to loft space, airing cupboard housing foam clad hot water cylinder and shelved storage

Bedroom 1

Built in double wardrobe, radiator, window to rear

Bedroom 2

Built in double wardrobe, radiator, window to front

Bedroom 3

Built in double wardrobe, fitted desk, radiator, window to rear

Bathroom

White suite comprising panelled bath with mixer tap and Aqualisa shower over, low level W.C., wash hand basin with mixer tap and cupboards under, heated towel rail, part tiled walls, tiled flooring, window to front

Front garden/Parking

A driveway provides parking for three cars

Garage

With metal doors, light and power, wall mounted Glow Worm gas fired central heating boiler, fuses and meters

Rear garden

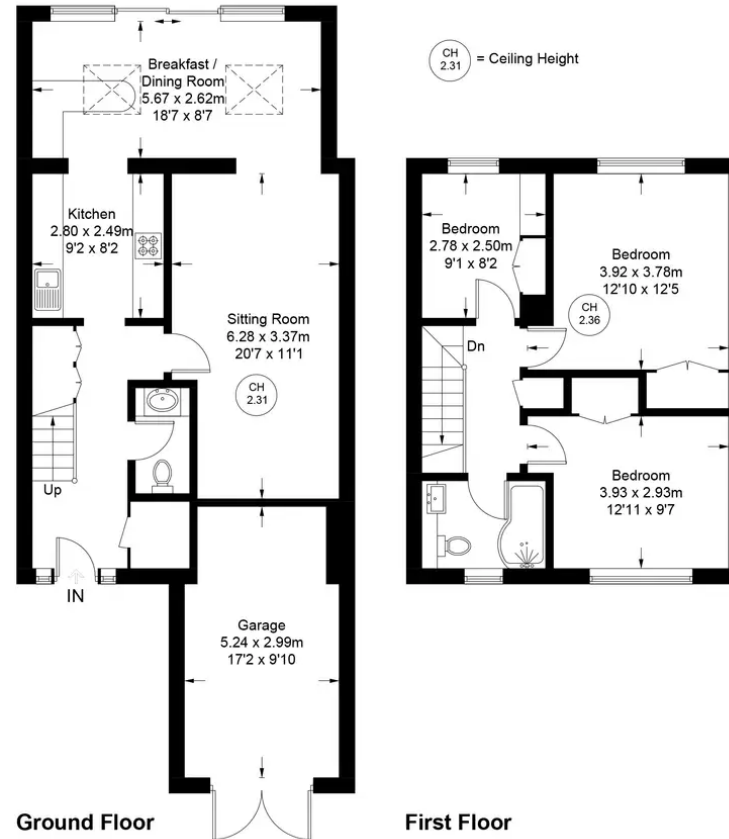
An area of patio leads to the remainder of garden which is laid to lawn. All is enclosed by panelled fencing and extends to 73'.





Robertsons

Approximate Gross Internal Area
Ground Floor = 58.5 sq m / 630 sq ft
First Floor = 45.5 sq m / 490 sq ft
Garage = 15.7 sq m / 169 sq ft
Total = 119.7 sq m / 1289 sq ft



Floor Plan produced for Robertsons by Media Arcade ©.

Illustration for identification purposes only. Window and door openings are approximate. Whilst every attempt is made to assure accuracy in the preparation of this plan, please check all dimensions, shapes and compass bearings before making any decisions reliant upon them.



Robertsons