



43 Willow Grove, Ruislip

Ruislip

In Excess of **£885,000**



LAWRENCE RAND

43 Willow Grove

Ruislip, Ruislip

This four bedroom detached bungalow located on a sought after road close proximity to both Ruislip and Ruislip Manor High Streets. In need of some gene...

Council Tax band: E

Tenure: Freehold

EPC Energy Efficiency Rating: D

EPC Environmental Impact Rating: D

- Four bedrooms
- Three bathrooms
- Refurbished throughout
- Quiet Road



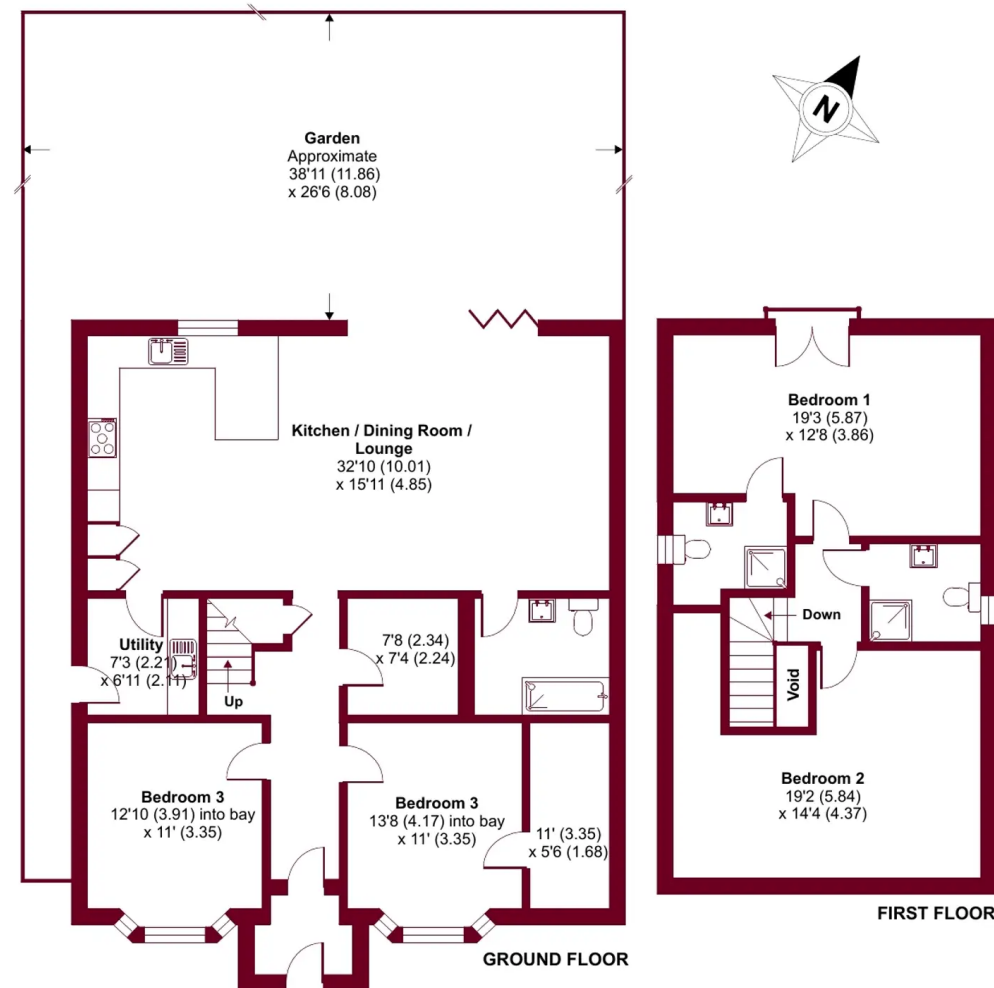




Willow Grove, Ruislip, HA4

Approximate Area = 1871 sq ft / 173.8 sq m

For identification only - Not to scale





Lawrence Rand

Lawrence Rand, 106 Victoria Road - HA4 0AL

01895 632211

Info@lawrence-rand.co.uk

www.lawrence-rand.co.uk/



LAWRENCE RAND