



## 17 Wyese Caravan Park, Bishopswood, HR9 5QX

£110,000 Leasehold

Detached Park Home • Two Bedrooms • Study • Kitchen/Dining Room • Utility • Enclosed Garden • Off Road Parking • Riverside Location



8 Broad Street, Ross-on-Wye, Herefordshire, HR9 7EA  
Tel: 01989 763553 Email: [rossonwye@bidmeadcook.co.uk](mailto:rossonwye@bidmeadcook.co.uk)  
[www.bidmeadcook.co.uk](http://www.bidmeadcook.co.uk)



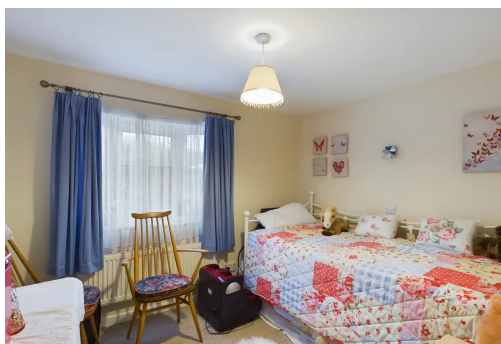
A two bedroom park home for the over 45s, situated in an enviable position overlooking the River Wye, having an enclosed garden and off road parking. The accommodation comprises a lounge having river views, study, kitchen/dining room to include a range of units and built-in oven. Rear utility/lean-to giving access to the garden. Two double bedrooms and bathroom having a three piece suite and shower over the bath. To the outside is off road parking and an enclosed garden being mainly laid to lawn with flower beds, fenced boundaries and a raised decked seating area.

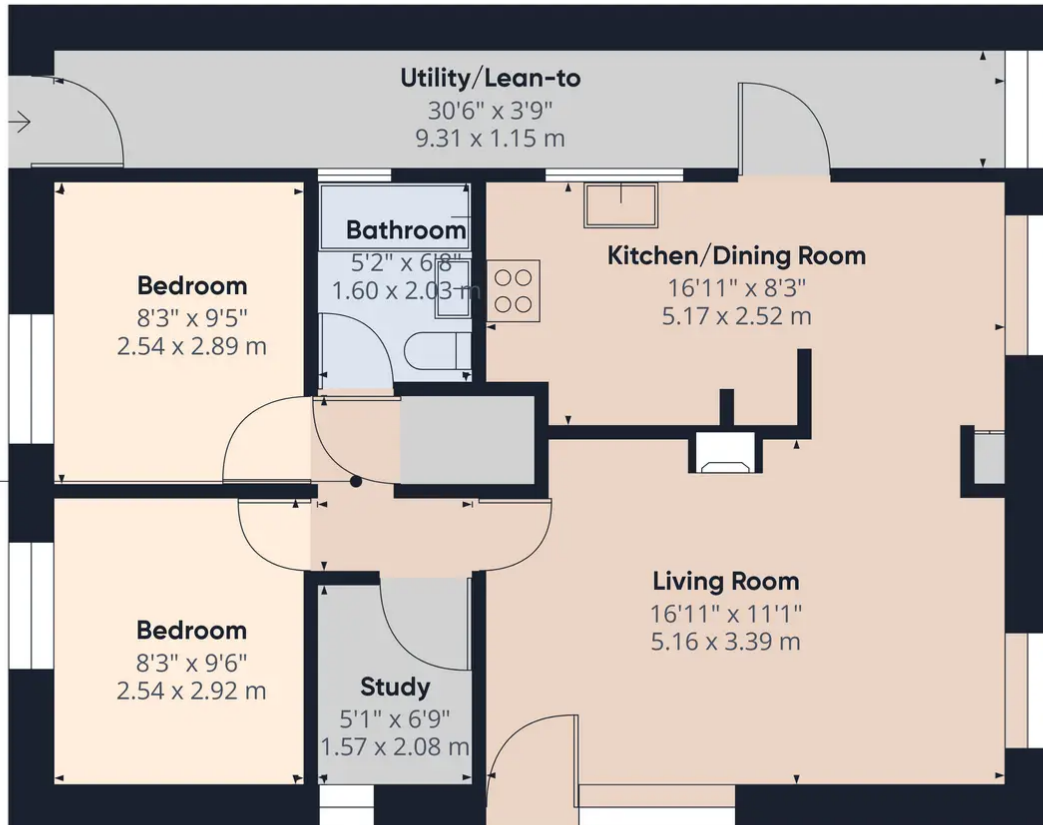


Council Tax band: A

Tenure: Leasehold

Agents Note: We are advised this property is leasehold, the current ground rent is £142.87 per month. The ground rent is reviewed annually during December.





Approximate total area<sup>0</sup>  
714.25 ft<sup>2</sup>  
66.36 m<sup>2</sup>

Excluding balconies and terraces

While every attempt has been made to ensure accuracy, all measurements are approximate, not to scale. This floor plan is for illustrative purposes only.

GIRAFFE360



No statement in these details is to be relied upon as representation of fact, and purchasers should satisfy themselves by inspection or otherwise as to the accuracy of the statements contain within. These details do not constitute any part of any offer or contract. Bidmead Cook and their employees and agents do not have any authority to give warranty or representation whatsoever in respect of this property. These details and all statements herein are provided without any responsibility on the part of Bidmead Cook or the vendors. Equipment: Bidmead Cook has not tested the equipment or central heating system mentioned in these particulars and the purchaser are advised to satisfy themselves as to the working order and condition. Measurements: Great care is taken when measuring, but measurements should not be relied upon for ordering carpets, equipment etc. The Laws of copyright protect this material. Bidmead Cook is the owner of the copyright. This property sheet forms part of our database and is protected by the database right and copyright laws. No unauthorised copying or distribution without permission.

Bidmead Cook is a trading name of trading name of BC Acquisition Ltd. Registered in England No.14967217