



## Harlequin Court, Arla Place

£380,000

Ruislip

 **LAWRENCE RAND**

# Harlequin Court

## Ruislip

Set on the top floor of this modern apartment building is this lovely two double bedroom, two bathroom property with the benefit of a long lease, residents parking, balcony and no onward chain. Harlequin Court is part of the 'Arla Place' development and has great access to multiple facilities including Central line and Chiltern Line station.

Council Tax band: D

Tenure: Leasehold

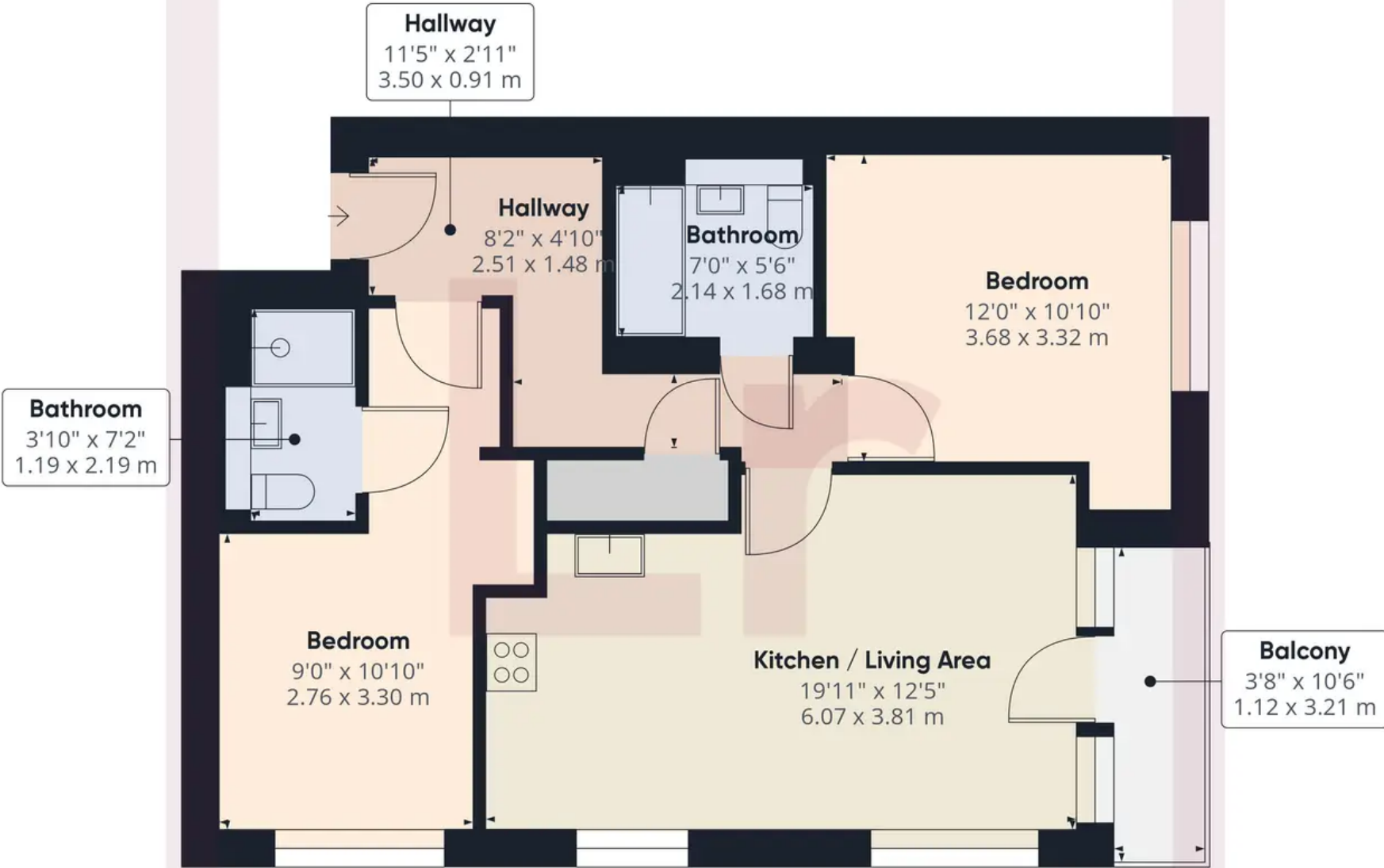
EPC Energy Efficiency Rating: B

EPC Environmental Impact Rating: A

- Top Floor Apartment
- Two Double Bedrooms
- En-suite to Master Bedroom
- Balcony
- Popular Modern Development
- Minutes from Shops & Station
- Residents Parking
- Long Lease







Approximate total area<sup>0</sup>  
697.53 ft<sup>2</sup>  
64.8 m<sup>2</sup>

Excluding balconies and terraces

While every attempt has been made to ensure accuracy, all measurements are approximate, not to scale. This floor plan is for illustrative purposes only.



## Lawrence Rand

Lawrence Rand, 106 Victoria Road - HA4 0AL

01895 632211

[Info@lawrence-rand.co.uk](mailto:Info@lawrence-rand.co.uk)

[www.lawrence-rand.co.uk/](http://www.lawrence-rand.co.uk/)



**LAWRENCE RAND**