

## The Lodge Drift Road, Caister-On-Sea

£280,000 Freehold

Exquisite 3-bed detached bungalow in sought-after Caister, NR30. Impressive living room, elegant dining room with exposed beams. Well-appointed kitchen with open layout. Peaceful bedrooms and contemporary family bathroom. Large driveway, garage, and landscaped rear garden.

Council Tax band: C

Tenure: Freehold



Exquisite 3-bed detached bungalow in sought-after Caister, NR30. Impressive living room, elegant dining room with exposed beams. Well-appointed kitchen with open layout. Peaceful bedrooms and contemporary family bathroom. Large driveway, garage, and landscaped rear garden.

### LOCATION

Drift Road in Caister presents a tranquil setting, nestled amidst the scenic beauty of the town. Lined with a mix of quaint cottages and modern residences, the road exudes a peaceful charm that resonates with both residents and visitors. Surrounded by greenery and well-tended gardens, Drift Road offers a serene escape from the hustle and bustle of everyday life. The community atmosphere is palpable, fostering a sense of togetherness among its inhabitants. Conveniently located near local amenities, the road strikes a balance between accessibility and idyllic surroundings. Drift Road in Caister stands as a testament to the town's harmonious blend of nature, community, and everyday convenience.

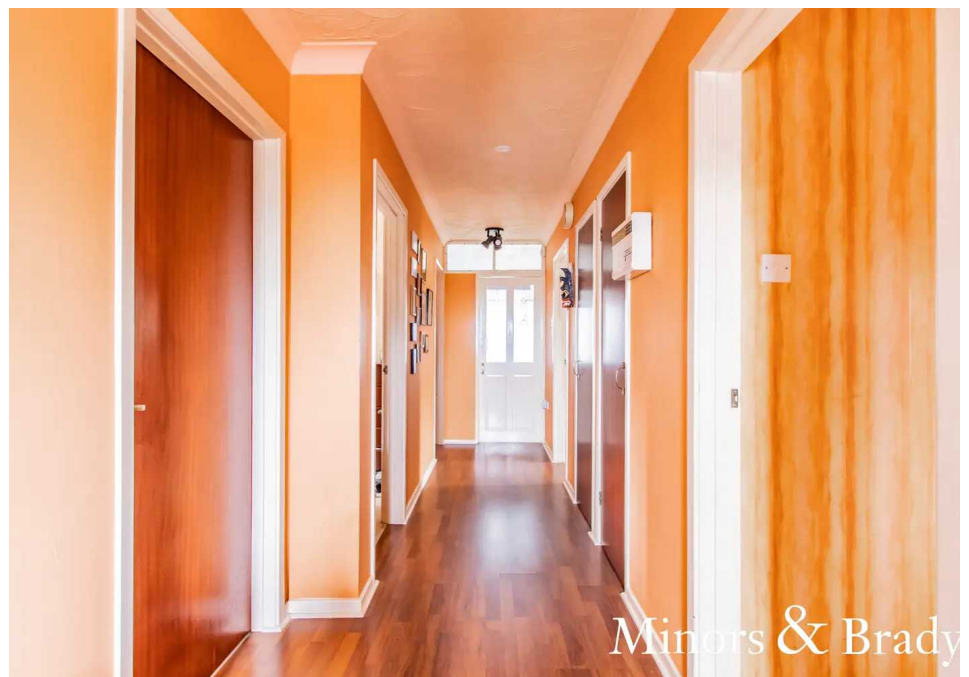
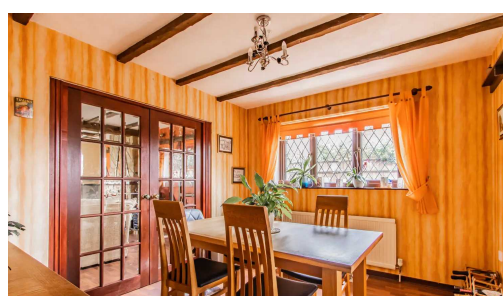
### DRIFT ROAD CAISTER



Exquisite 3-bed detached bungalow in sought-after Caister, NR30. Impressive living room, elegant dining room with exposed beams. Well-appointed kitchen with open layout. Peaceful bedrooms and contemporary family bathroom. Large driveway, garage, and landscaped rear garden.

### LOCATION

Drift Road in Caister presents a tranquil setting, nestled amidst the scenic beauty of the town. Lined with a mix of quaint cottages and modern residences, the road exudes a peaceful charm that resonates with both residents and visitors. Surrounded by





Exquisite 3-bed detached bungalow in sought-after Caister, NR30. Impressive living room, elegant dining room with exposed beams. Well-appointed kitchen with open layout. Peaceful bedrooms and contemporary family bathroom. Large driveway, garage, and landscaped rear garden.

## LOCATION

Drift Road in Caister presents a tranquil setting, nestled amidst the scenic beauty of the town. Lined with a mix of quaint cottages and modern residences, the road exudes a peaceful charm that resonates with both residents and visitors. Surrounded by greenery and well-tended gardens, Drift Road offers a serene escape from the hustle and bustle of everyday life. The community atmosphere is palpable, fostering a sense of togetherness among its inhabitants. Conveniently located near local amenities, the road strikes a balance between accessibility and idyllic surroundings. Drift Road in Caister stands as a testament to the town's harmonious blend of nature, community, and everyday convenience.

## DRIFT ROAD, CAISTER

Introducing a remarkable three-bedroom detached bungalow situated in the sought-after location of Caister, NR30. This exquisite property showcases an abundance of desirable features and boasts a beautifully presented interior, perfectly suited to family living.

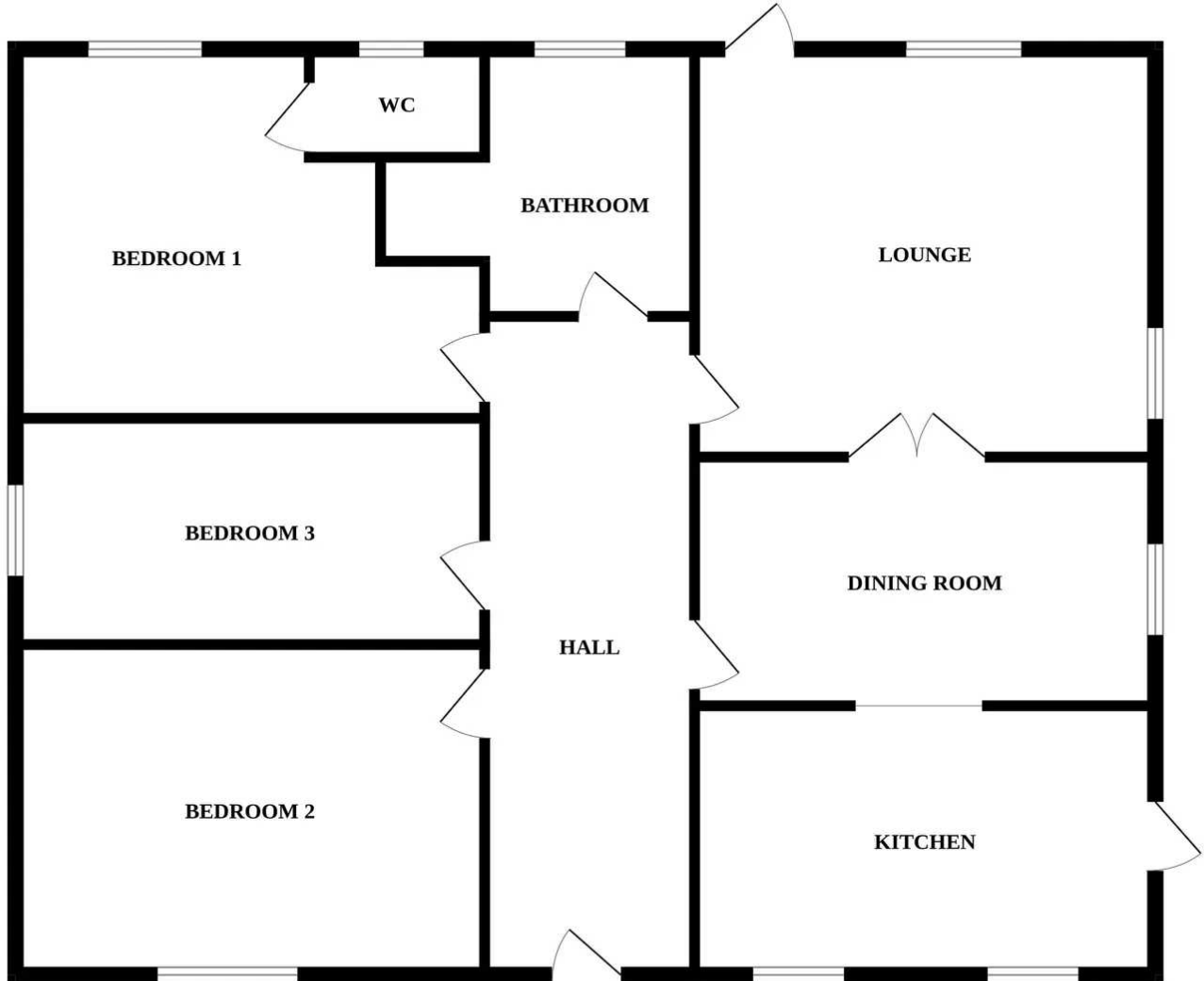
Upon entering this impressive home, one is greeted by a spacious living room, bathed in natural light, making it an inviting space in which to relax and unwind. The separate dining room provides an elegant setting for hosting dinner parties or enjoying family meals. Be prepared to be captivated by the stunning exposed beams throughout, adding character and charm to the overall ambience. These beams are purely decorative and not structural.

The bright and airy kitchen is well-appointed, offering a range of modern appliances and ample storage space for all your culinary needs. This delightful space benefits from an open layout, enabling seamless connection to the adjoining dining area, facilitating effortless entertaining and ensuring the heart of the home truly lives up to expectations.

Completing the accommodation are three generous bedrooms, each offering peaceful spaces to retire to at the end of a long day with the back bedroom featuring a hand wash basin and WC. The four-piece suite family bathroom exudes contemporary elegance, featuring both a bathtub and a separate shower cubicle for added convenience.



## GROUND FLOOR



Whilst every attempt has been made to ensure the accuracy of the floorplan contained here, measurements of doors, windows, rooms and any other items are approximate and no responsibility is taken for any error, omission or mis-statement. This plan is for illustrative purposes only and should be used as such by any prospective purchaser. The services, systems and appliances shown have not been tested and no guarantee as to their operability or efficiency can be given.  
Made with Metropix ©2023

You can include any text here. The text can be modified upon generating your brochure.

You can include any text here. The text can be modified upon generating your brochure.

